

# Community Economic Profile –Elmore County

## Elmore County & BLM Four Rivers Field Office

With Special Thanks to:

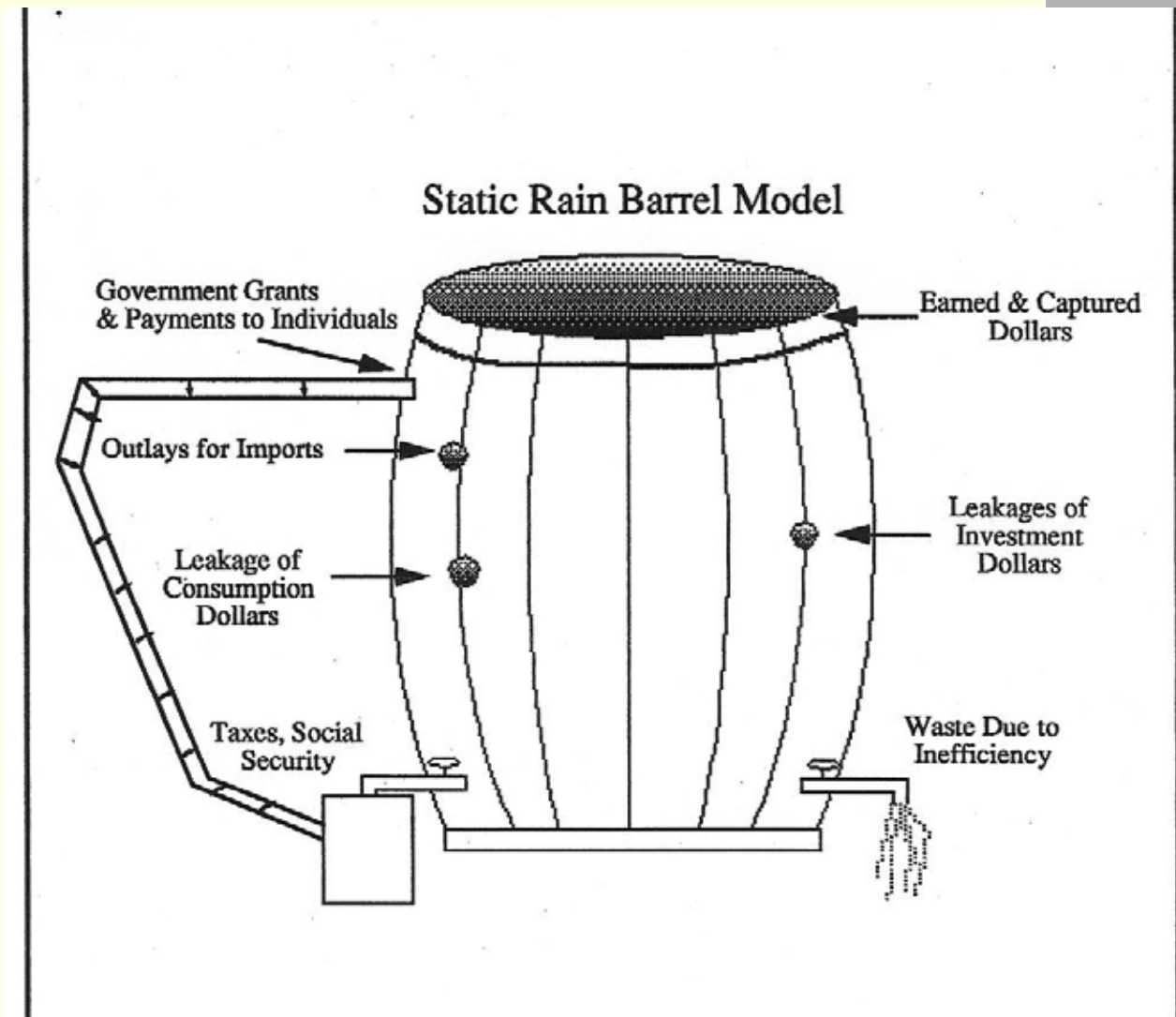
1. Headwaters Economic Profile System
2. Northwest Area Foundation Indicator Website
3. Idaho Dept of Commerce & Labor Community Profiles

# Profile Overview

---

1. Economics 101
2. People
3. Jobs
4. Income
5. Households
6. Social aspects
7. Key Points

# A Simple Model of a Local Economy



# Population Growth in the Four Rivers Region

## Populations by County

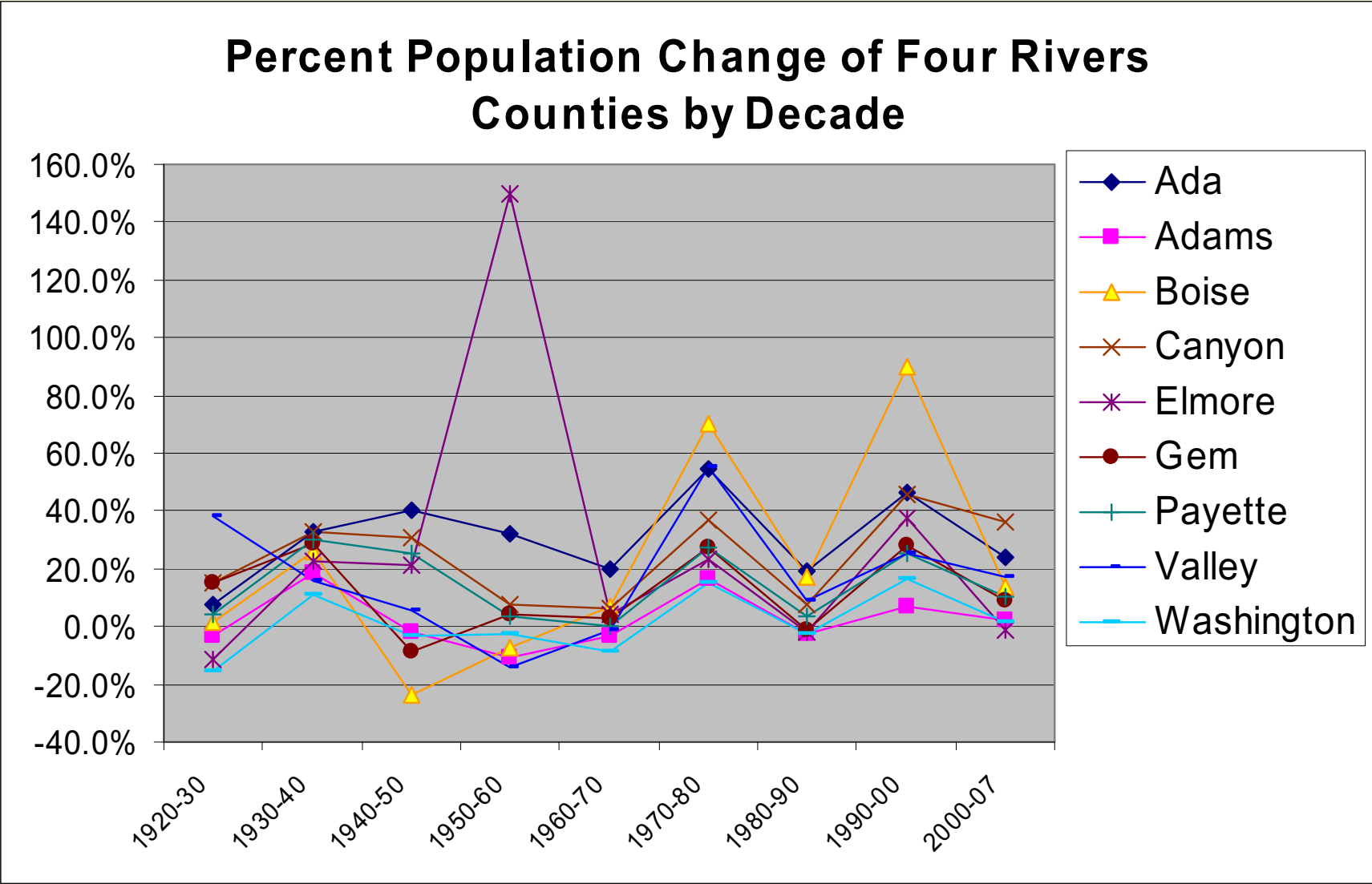
	1980	1990	2000	2007	1980-90	1990-00	2000-07	1980-07
<b>Ada</b>	173,125	205,775	300,904	373,406	18.9%	46.2%	24.1%	115.7%
<b>Adams</b>	3,347	3,254	3,476	3,546	-2.8%	6.8%	2.0%	5.9%
<b>Boise</b>	2,999	3,509	6,670	7,571	17.0%	90.1%	13.5%	152.5%
<b>Canyon</b>	83,756	90,076	131,441	179,381	7.5%	45.9%	36.5%	114.2%
<b>Elmore</b>	21,565	21,205	29,130	28,856	-1.7%	37.4%	-0.9%	33.8%
<b>Gem</b>	11,972	11,844	15,181	16,496	-1.1%	28.2%	8.7%	37.8%
<b>Payette</b>	15,825	16,434	20,578	22,751	3.8%	25.2%	10.6%	43.8%
<b>Valley</b>	5,604	6,109	7,651	8,945	9.0%	25.2%	16.9%	59.6%
<b>Washington</b>	8,803	8,550	9,977	10,147	-2.9%	16.7%	1.7%	15.3%
<b>FRFO Regio</b>	<b>326,996</b>	<b>366,756</b>	<b>525,008</b>	<b>651,099</b>	<b>12.2%</b>	<b>43.1%</b>	<b>24.0%</b>	<b>99.1%</b>
<b>% of State</b>	34.6%	36.4%	40.6%	43.4%				
<b>State Total</b>	944,127	1,006,749	1,293,953	1,499,402	6.6%	28.5%	15.9%	58.8%

Source: U.S. Census historical data with 2007 Census update by Claritas

*Why did growth stop in this decade in Elmore County?*

**Key Point #1:** Population growth was rapid in 1990s, but has grown stagnant this decade.

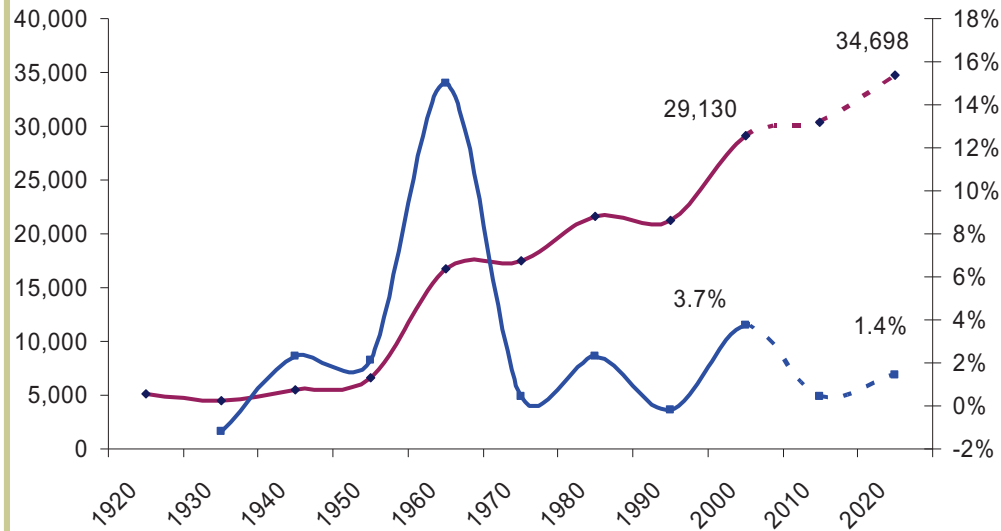
Historically, look how Elmore County spiked in growth to become it's modern self in the 1950's, with the building of the Air Force base.



# Elmore County Population: Slow Growth, Stagnant Recently

Elmore County Population Trends:

Number of Persons (left axis) and Annualized % Change for Decade (right axis)



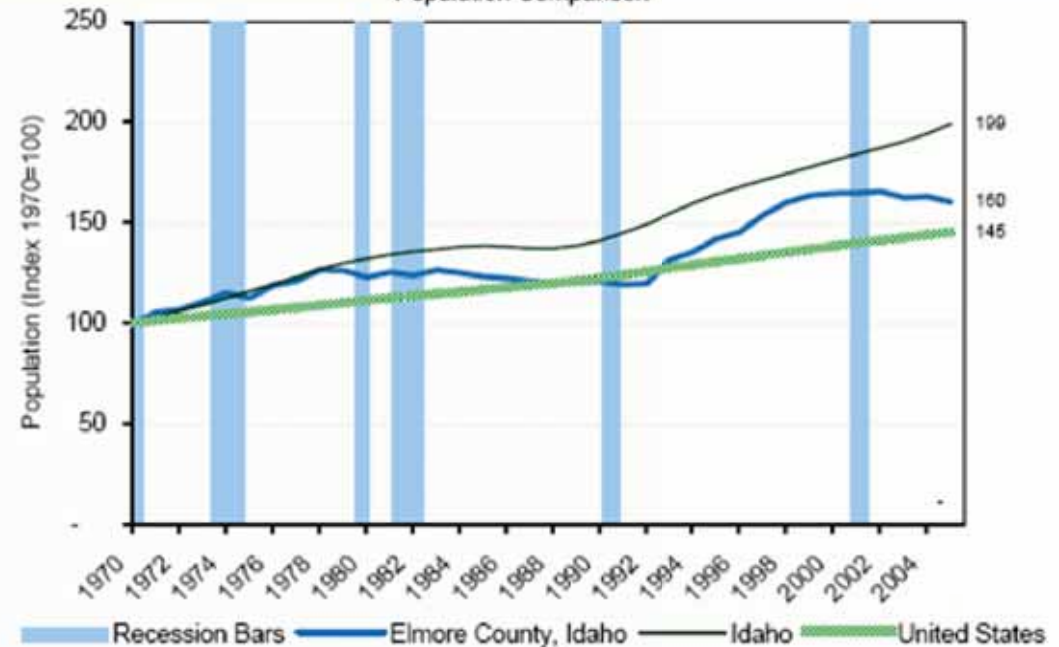
## 28,856 in 2007

Grew by 10,648, or 60% since 1970

1.4% annual growth 1970-2000

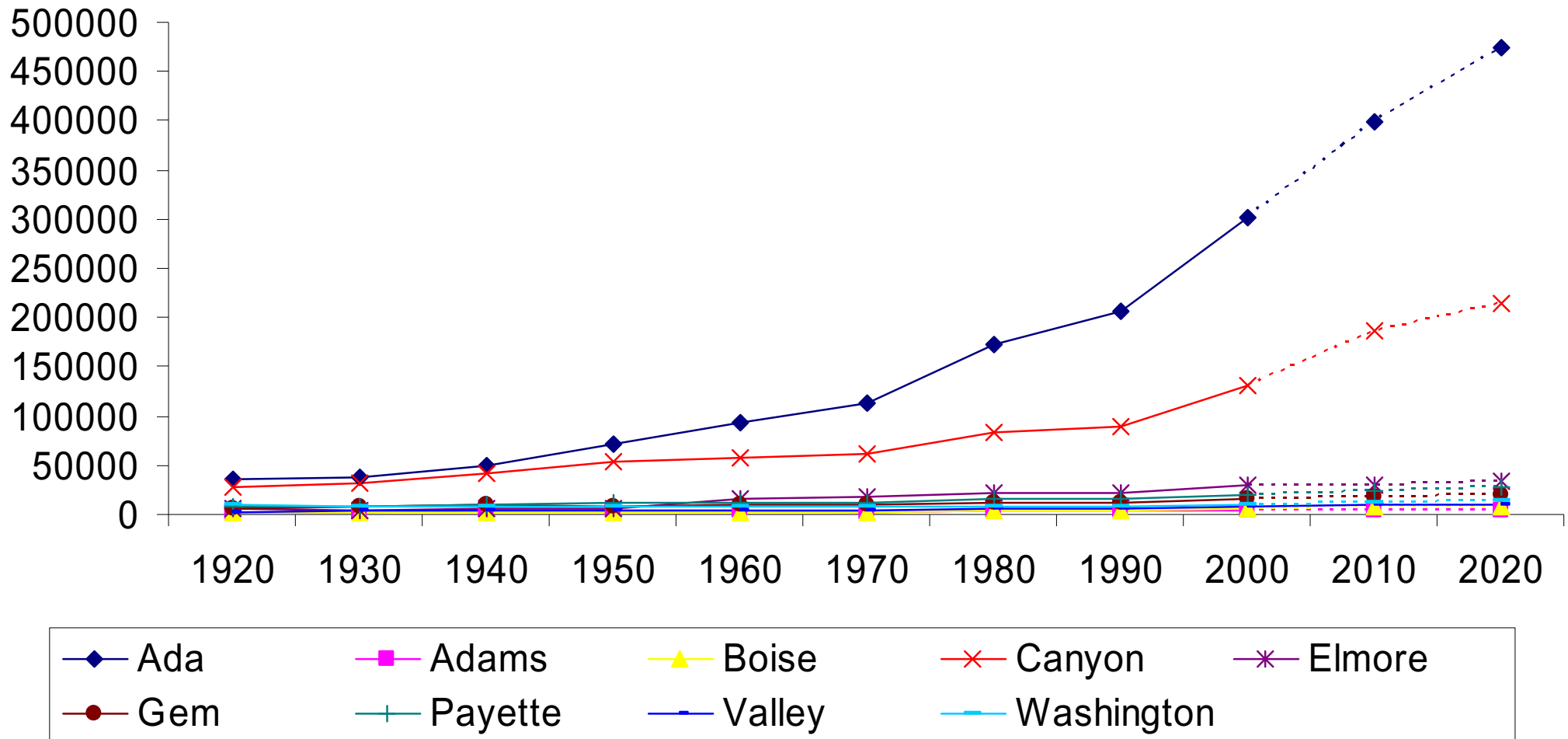
- 0.9% total growth 2000-2007

Population Comparison



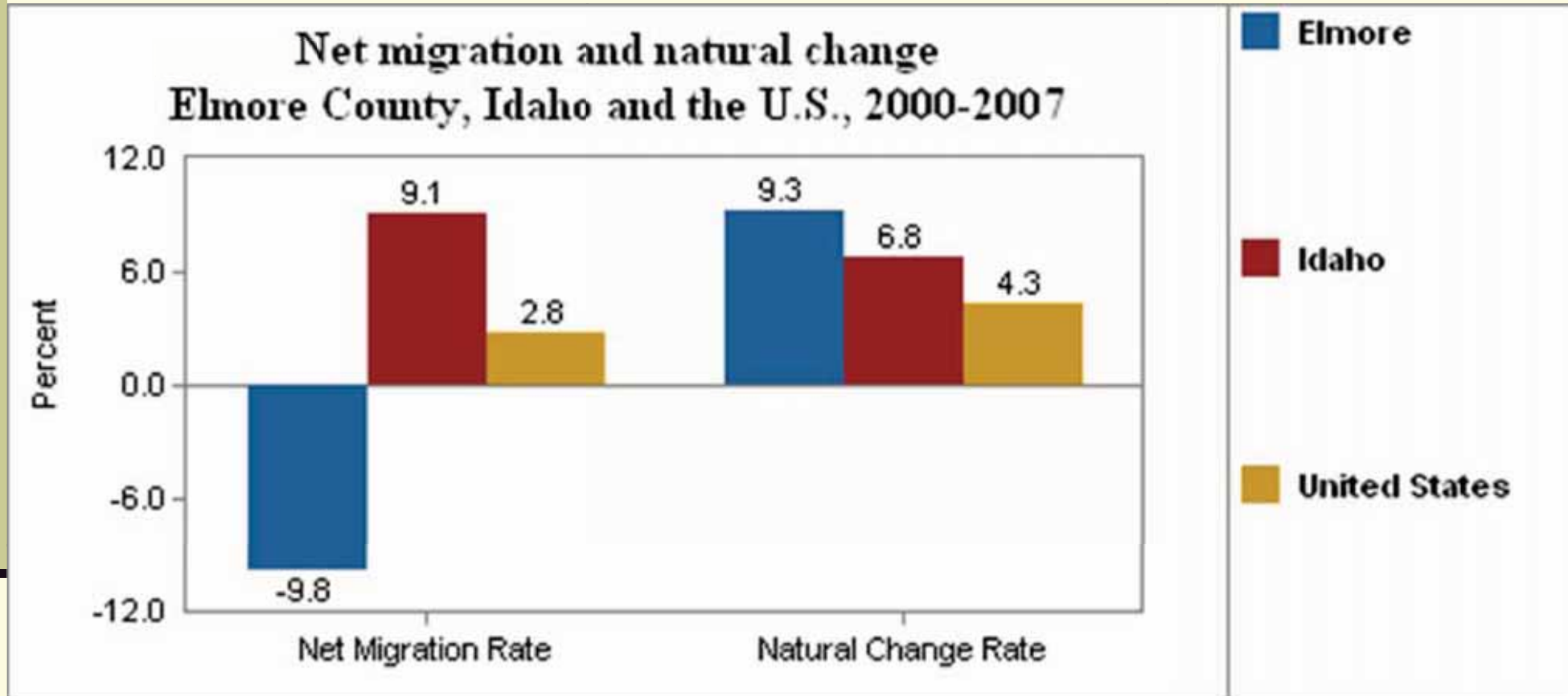
# Population Projected Growth in the Four Rivers Region

## Population of Four Rivers Counties



**Key Point #2: Expect more visitors from a rapidly growing Treasure Valley.**

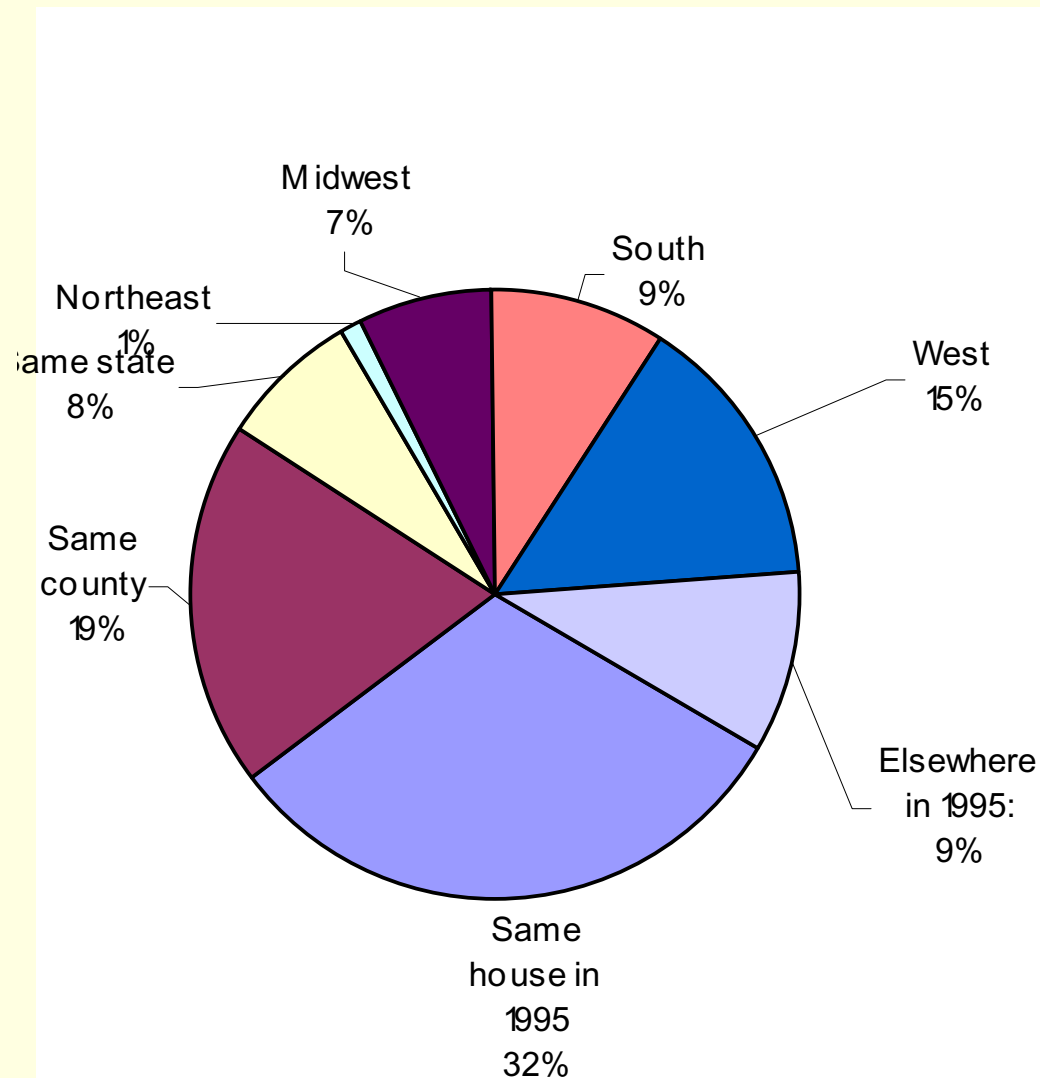
# Why is Elmore County Growing More Slowly than Idaho Right now?



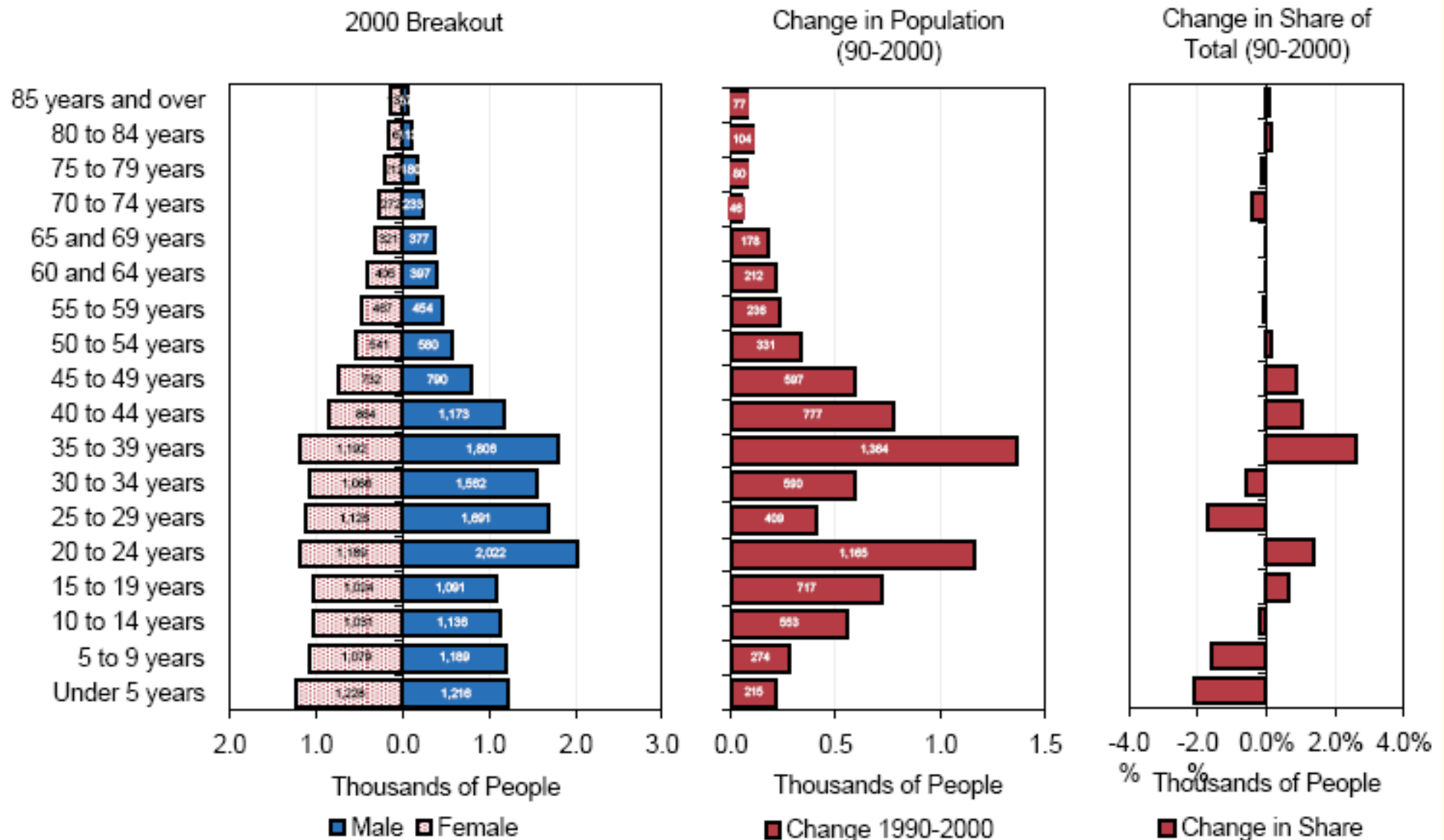
Despite high natural growth,  
Elmore County has high net out-migration this decade.

# Only 25% are Idaho natives. Where are the newcomers from?

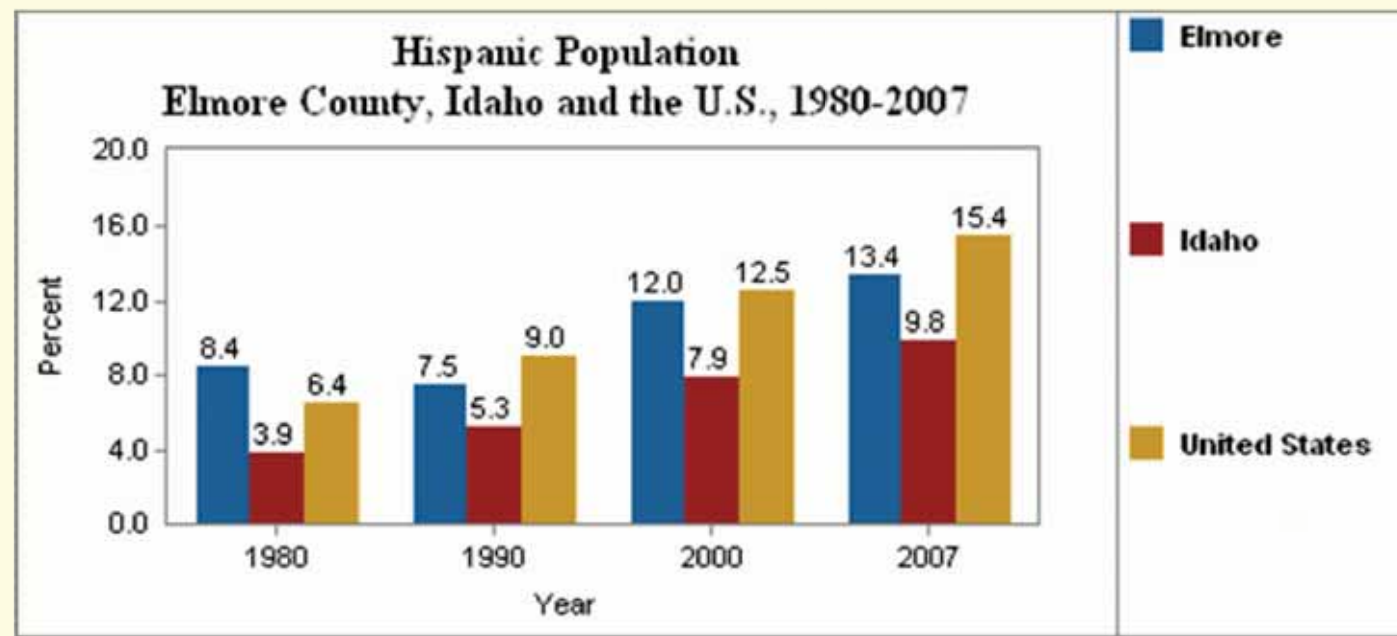
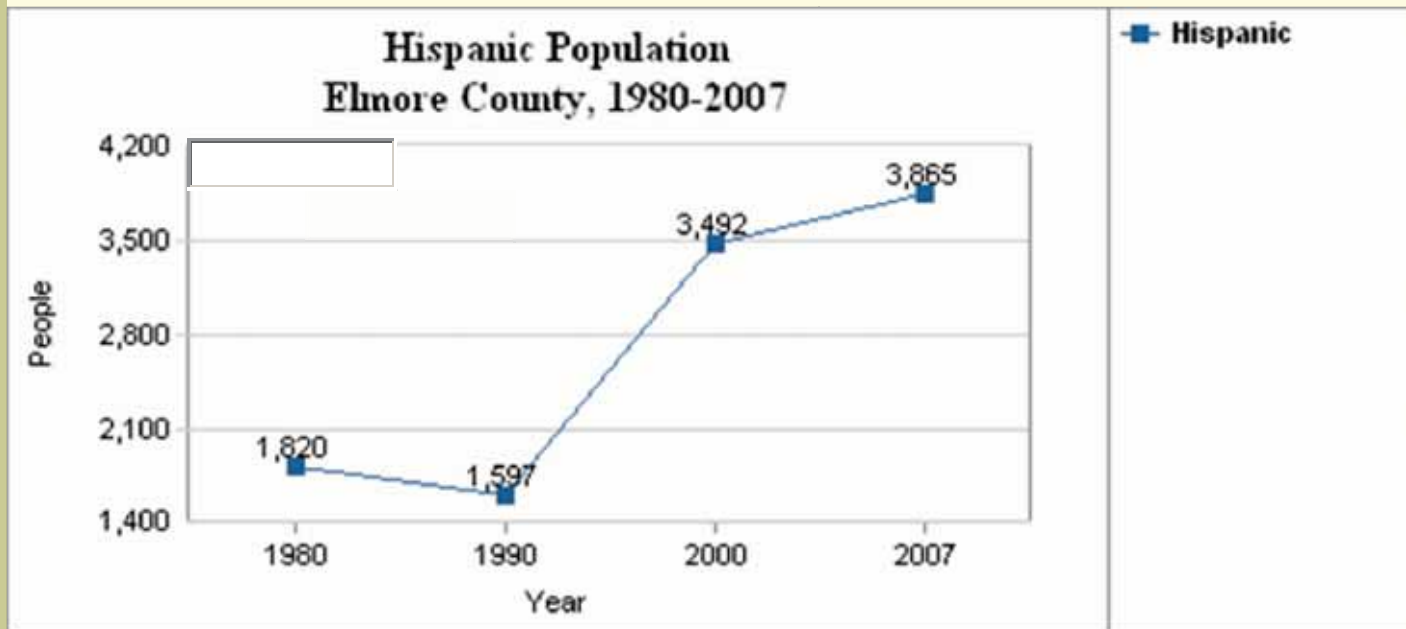
Where are these newcomers from?  
New Residents since 1995



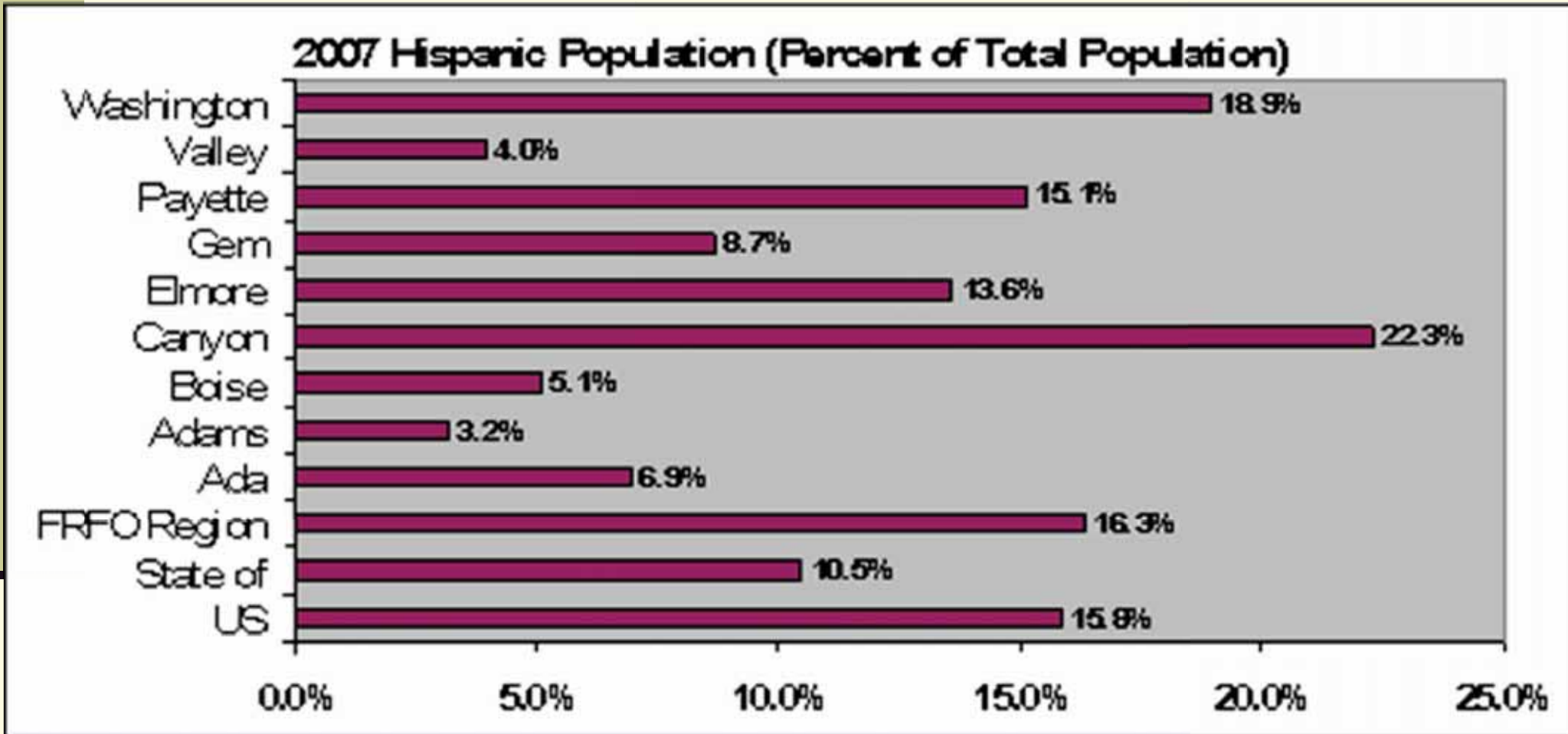
# Gain in Age 35-49 & 15-24 Losses in Ages 0-9 & 25-34



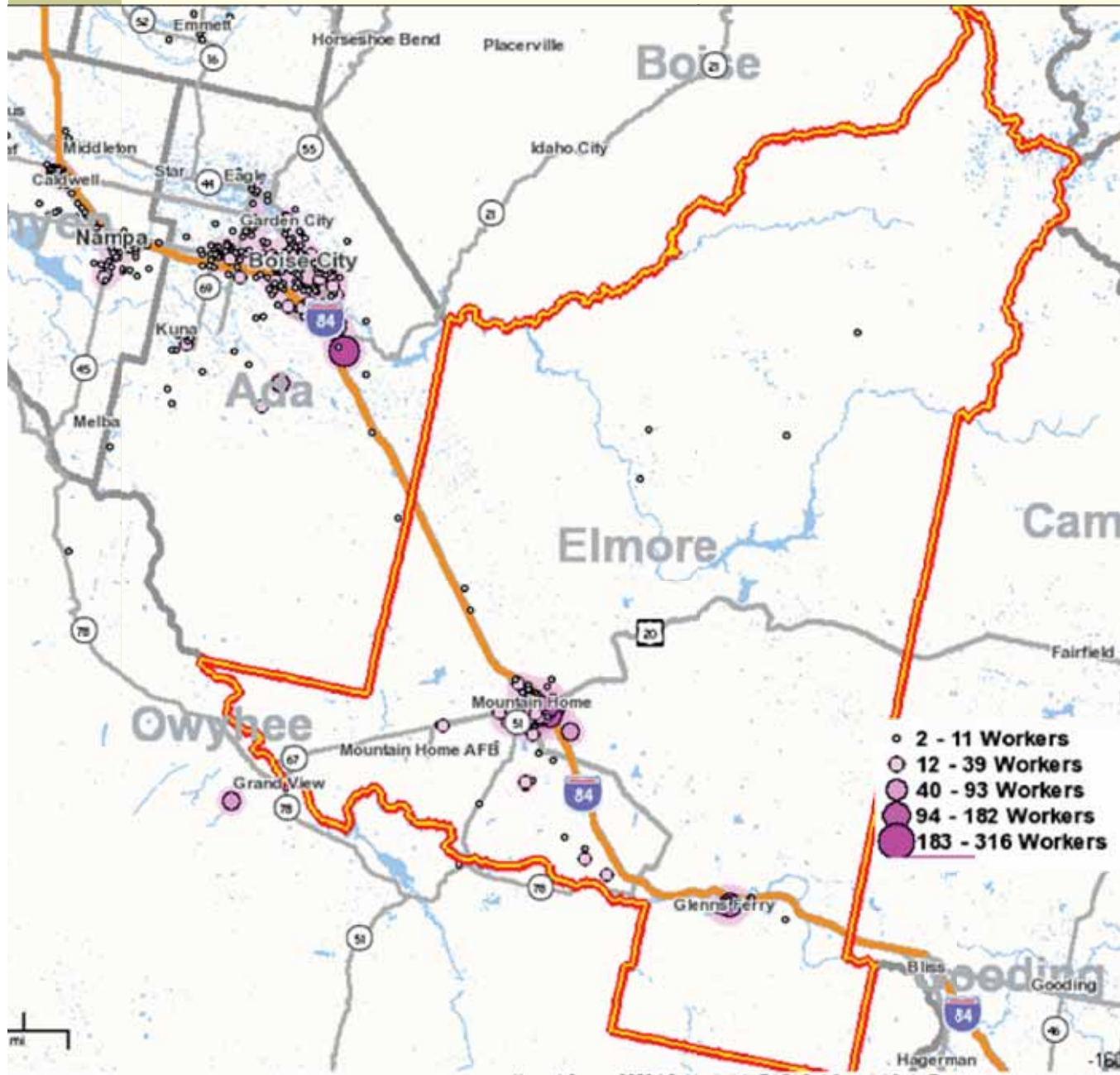
# Key Point #3: Hispanic Community is Growing



# County Comparison of Hispanic Populations



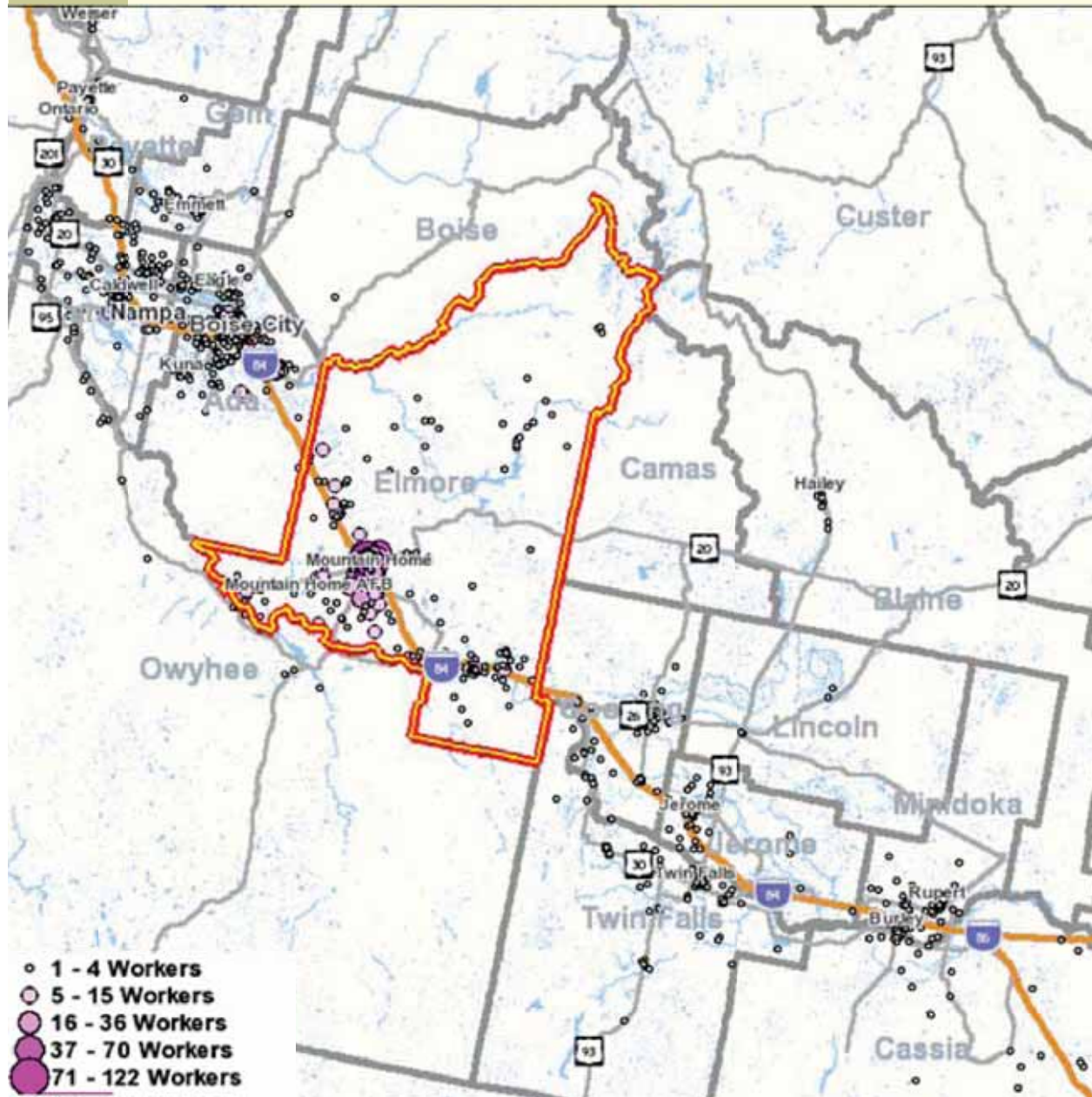
# Where Do Elmore County Residents Work?



## Commuting Out:

- 47.5%, or 3,154, total
- 28.3% Ada County
- 7.3% Canyon Cty

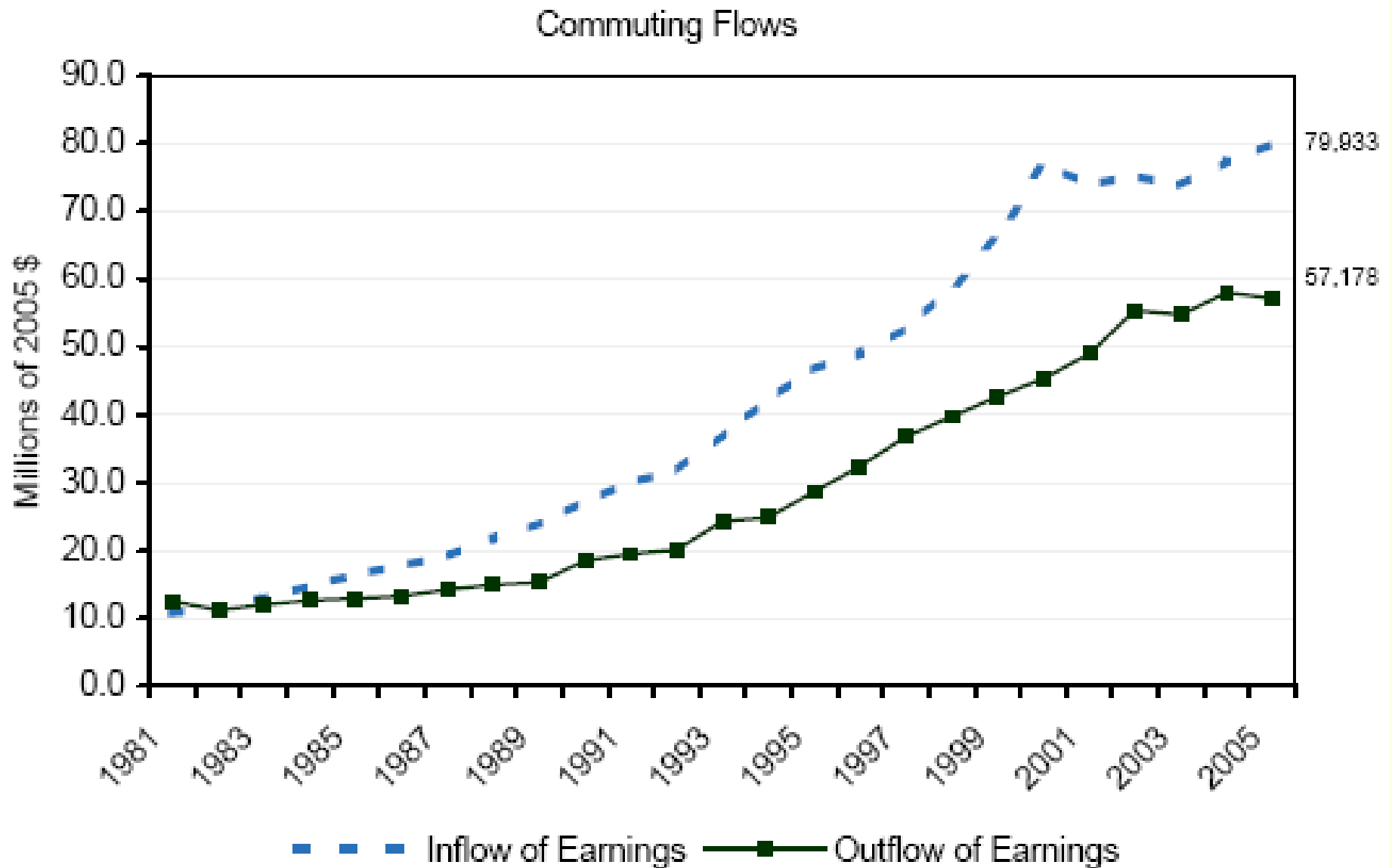
# Where Do Elmore County Workers Live?



## Commuting In:

- 30.5%, or 1,532 total
- 14.4% from Ada Cty
- 4.5% from Canyon Cty
- 2.1% from Twin Falls County

# What Does this Commuting Mean in Monetary Terms?



# What is the Net Effect of Commuting?

