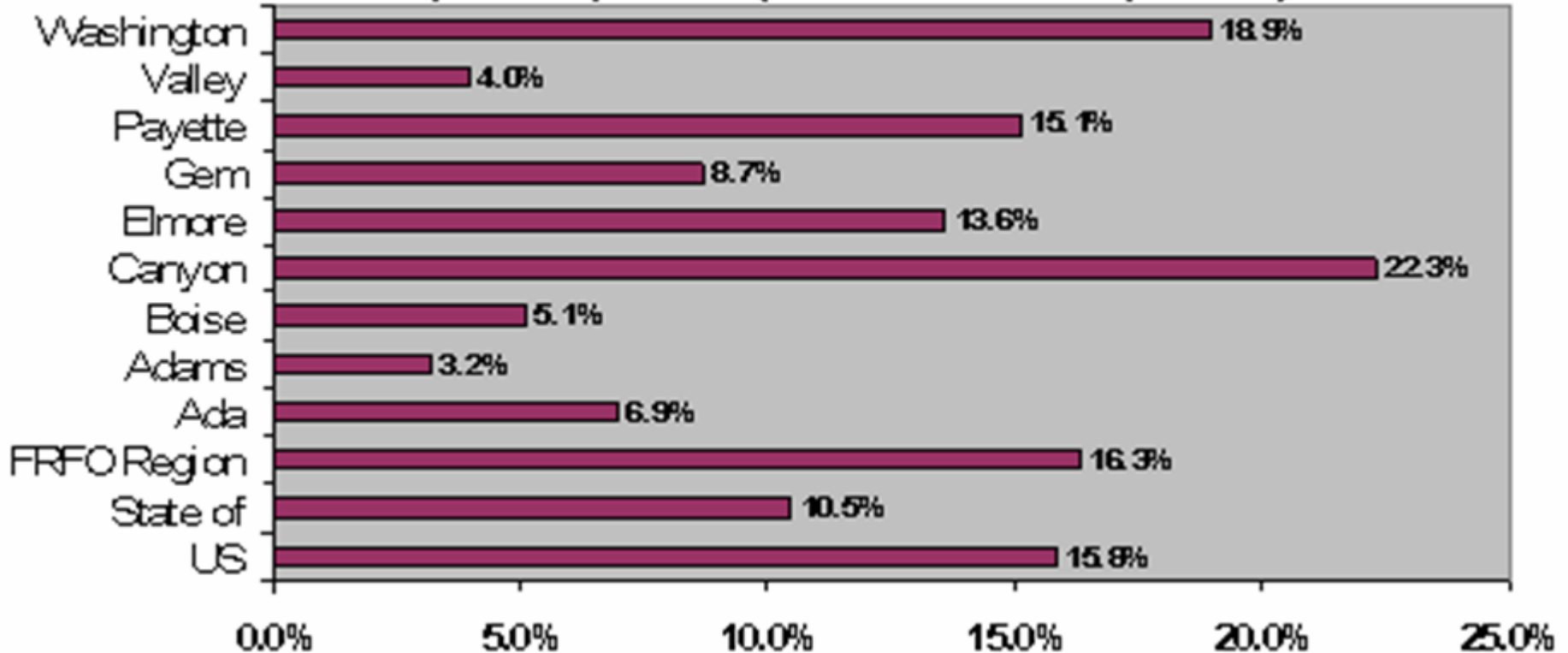
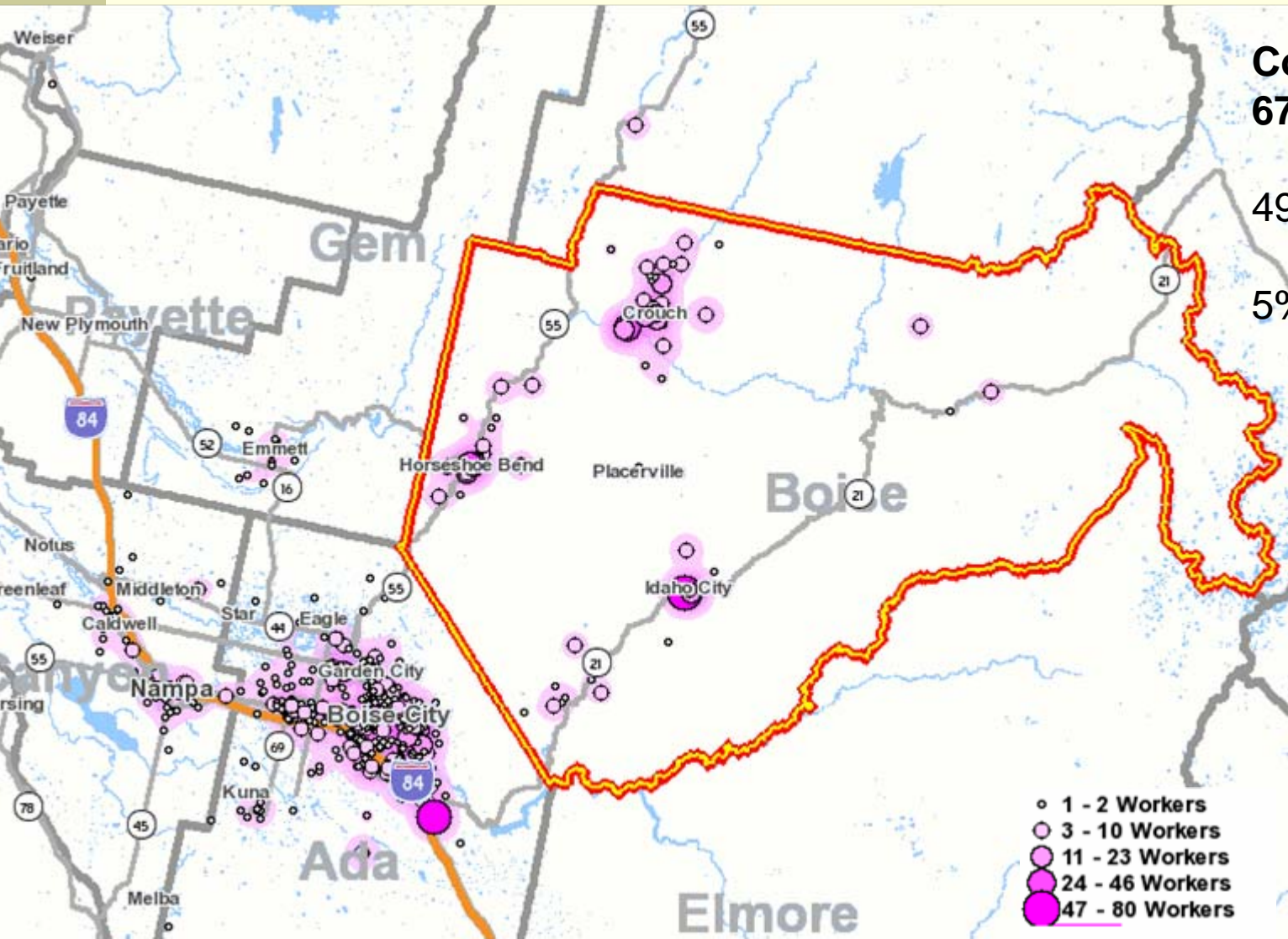


County Comparison of Hispanic Population

2007 Hispanic Population (Percent of Total Population)



Where Do Boise County Residents Work?



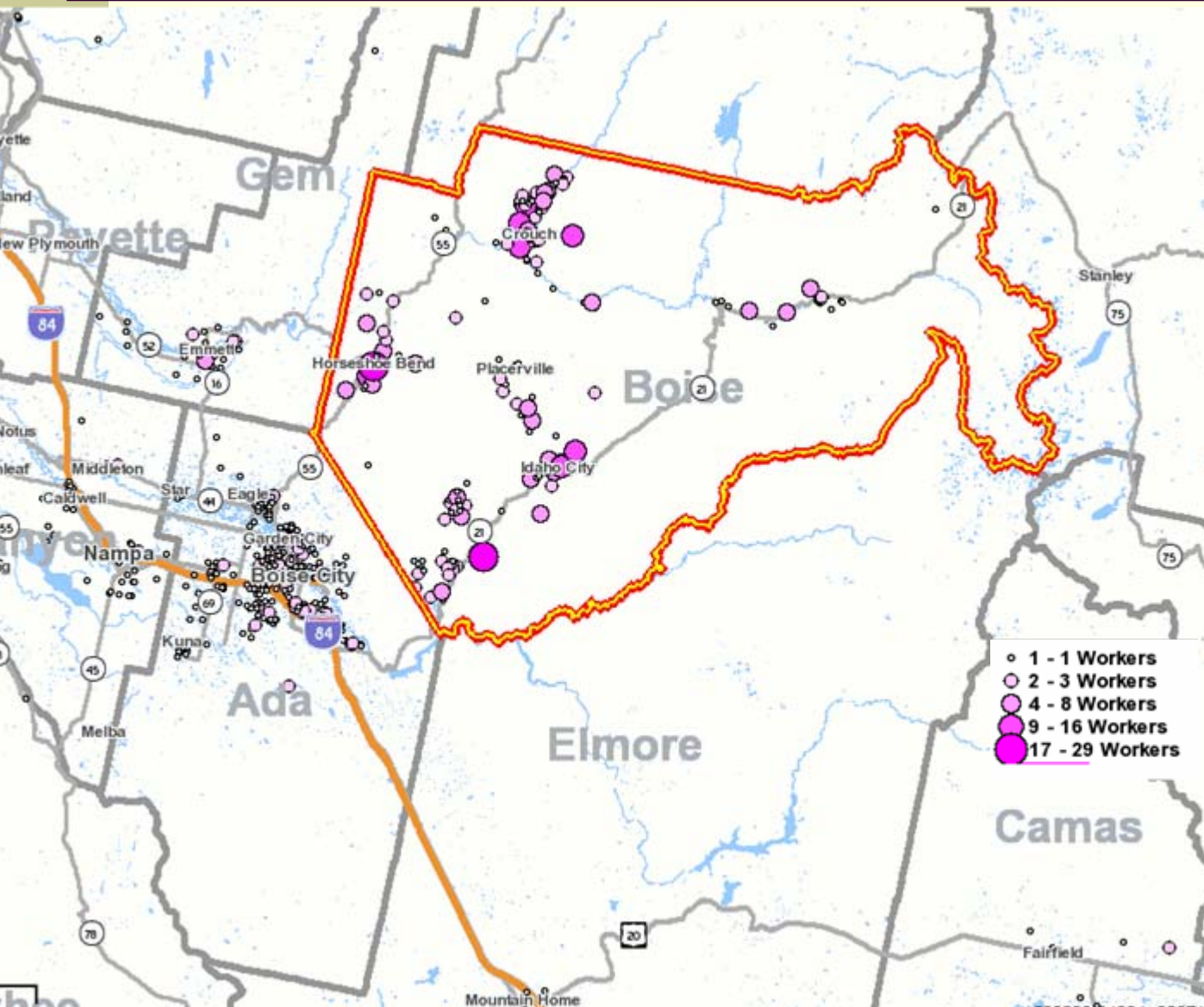
Commuting Out:
67.4% or 1,129

49.6% to Ada Cty

5% to Canyon Cty

2006 Census data

Where Do Boise County Workers Live?

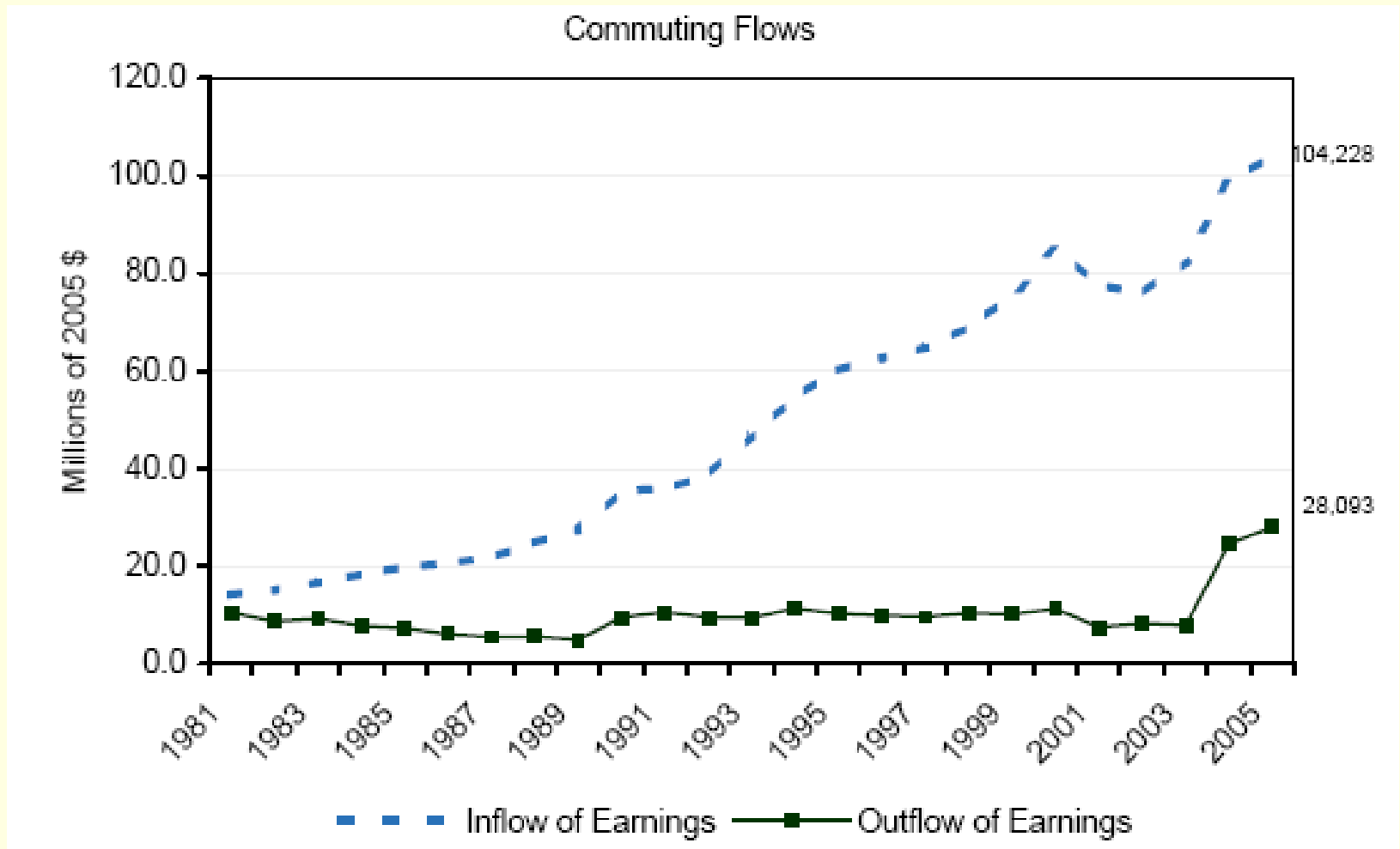


Commuting In:
45.5% or 455 total

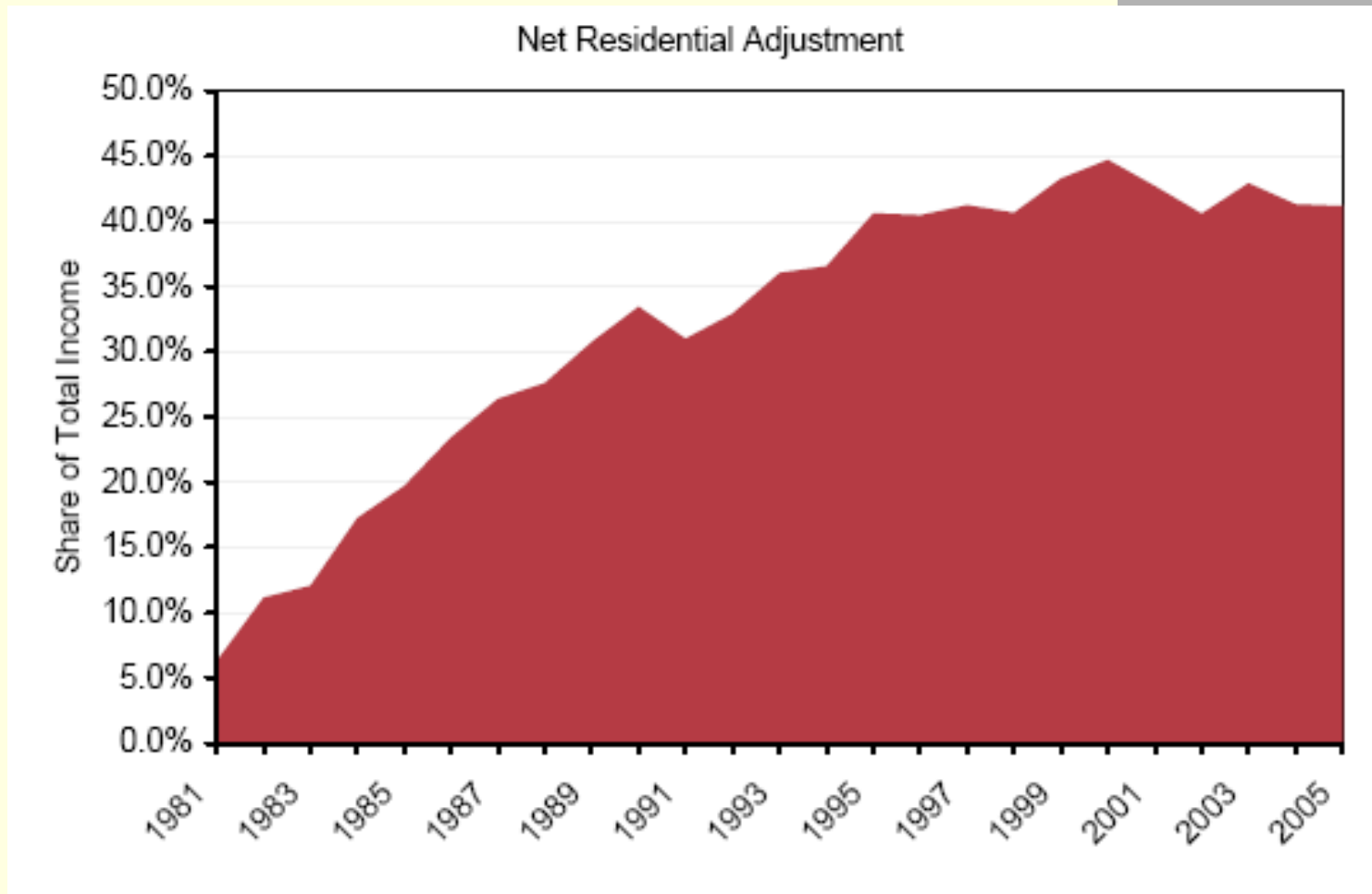
30.4% from Ada
5.0% from Gem
4.7% from Canyon

2006 Census data

What Does this Commuting Mean in Monetary Terms?

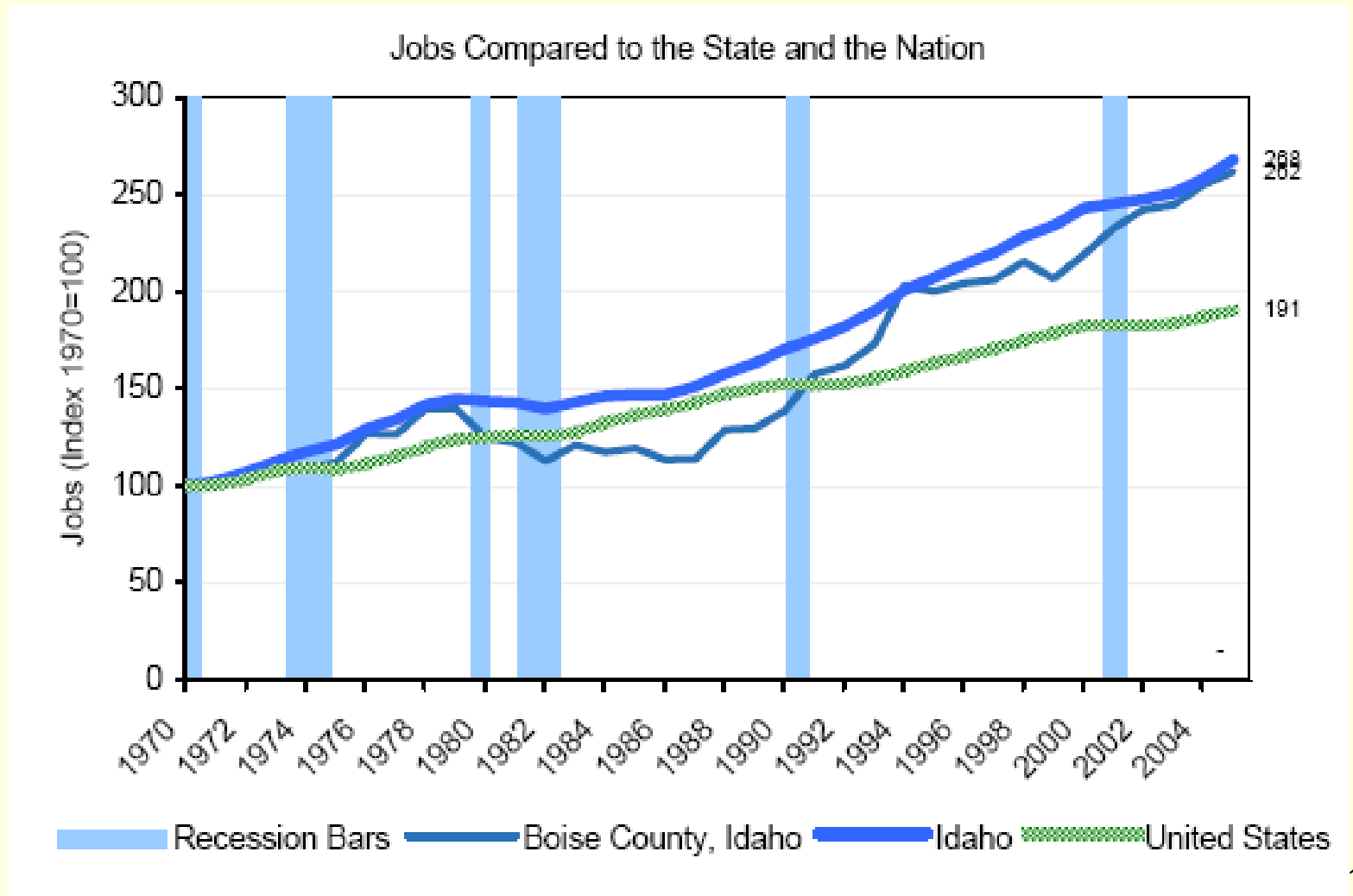


What is the Net Effect of Commuting?

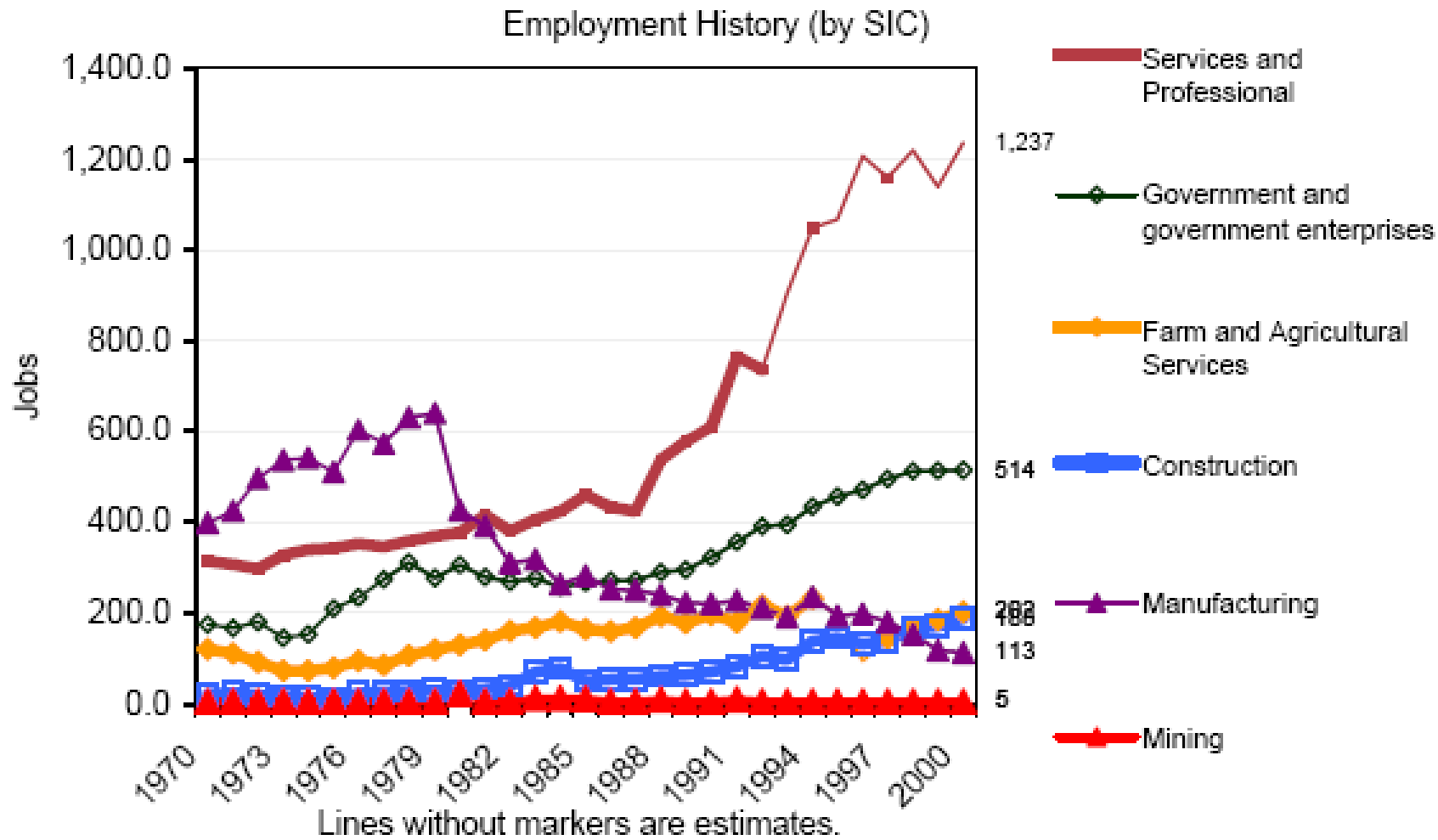


Key Point #3: Commuting out of Boise County is important.

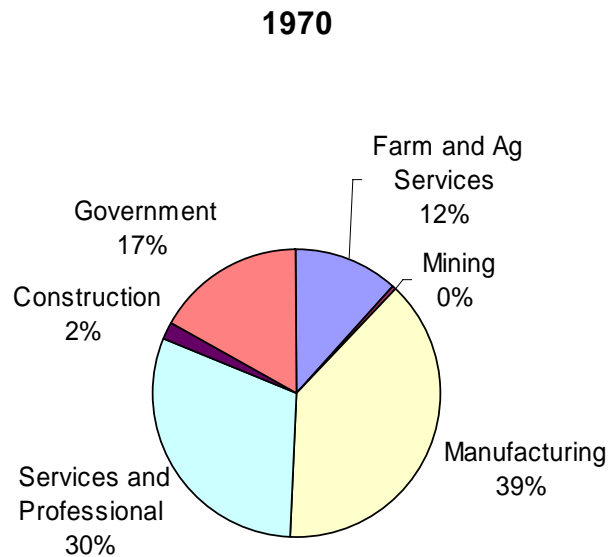
Job Growth? No problem. Boise County keeps pace with the State.



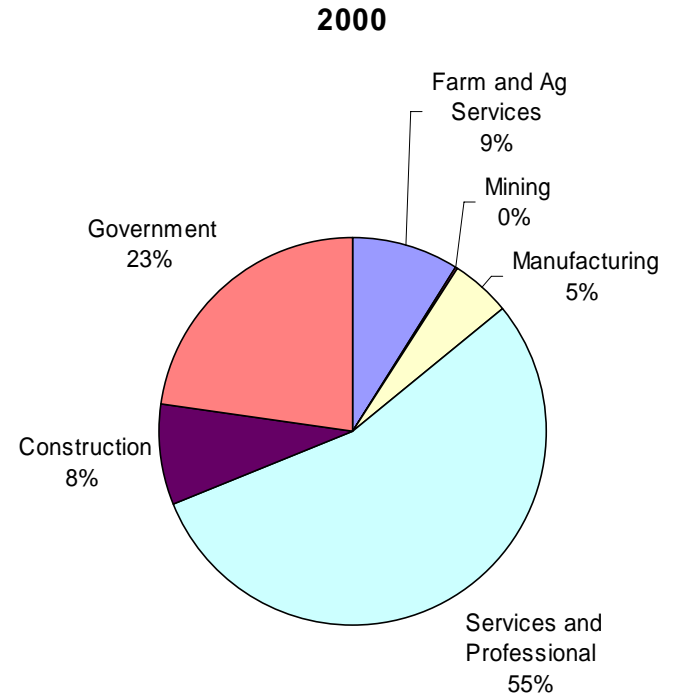
Boise County Job Growth by Industry: Services Keep Growing



An Economy in Transition



1,031 jobs

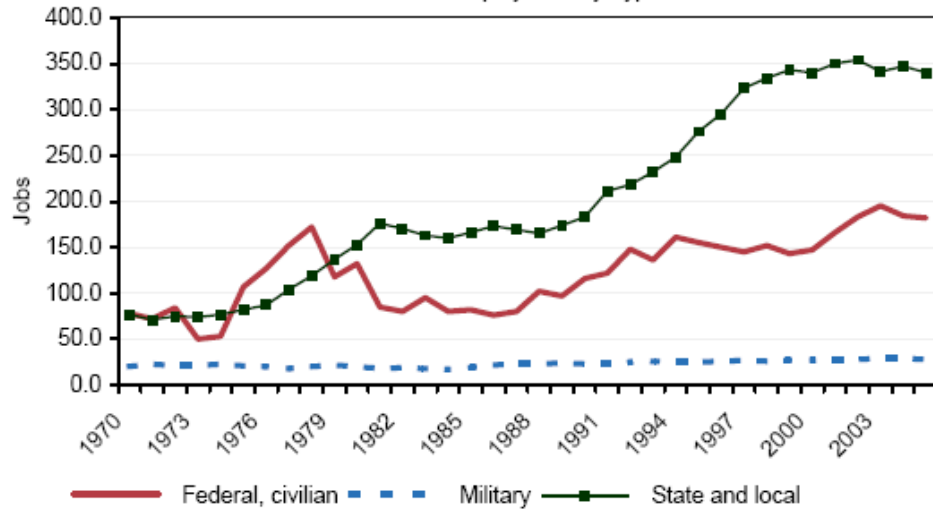


2,259 jobs

Key Point #4: Traditional resource industries are not engines of future growth.

Is Government Growing?

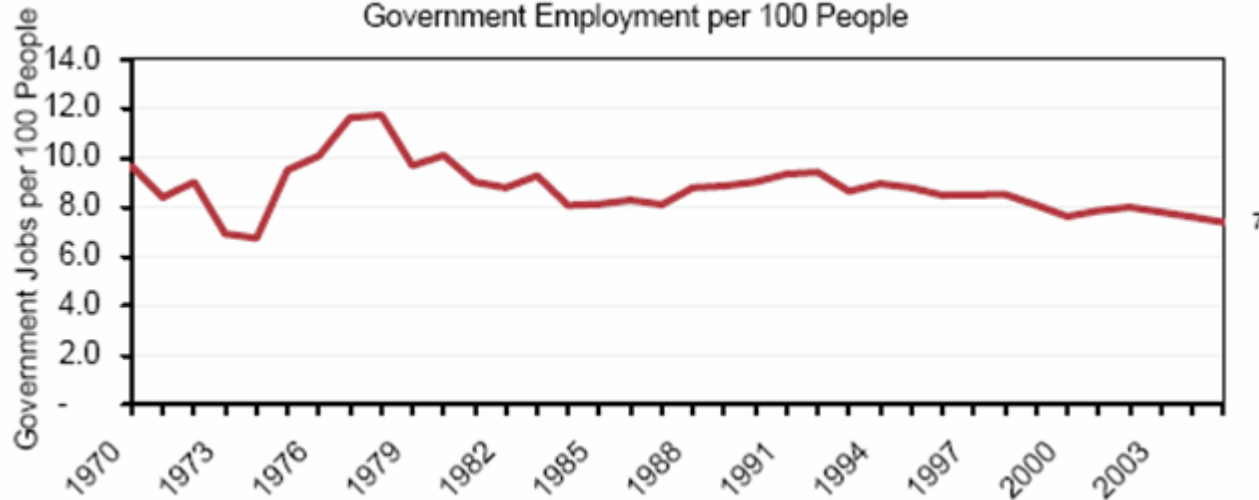
Government Employment by Type



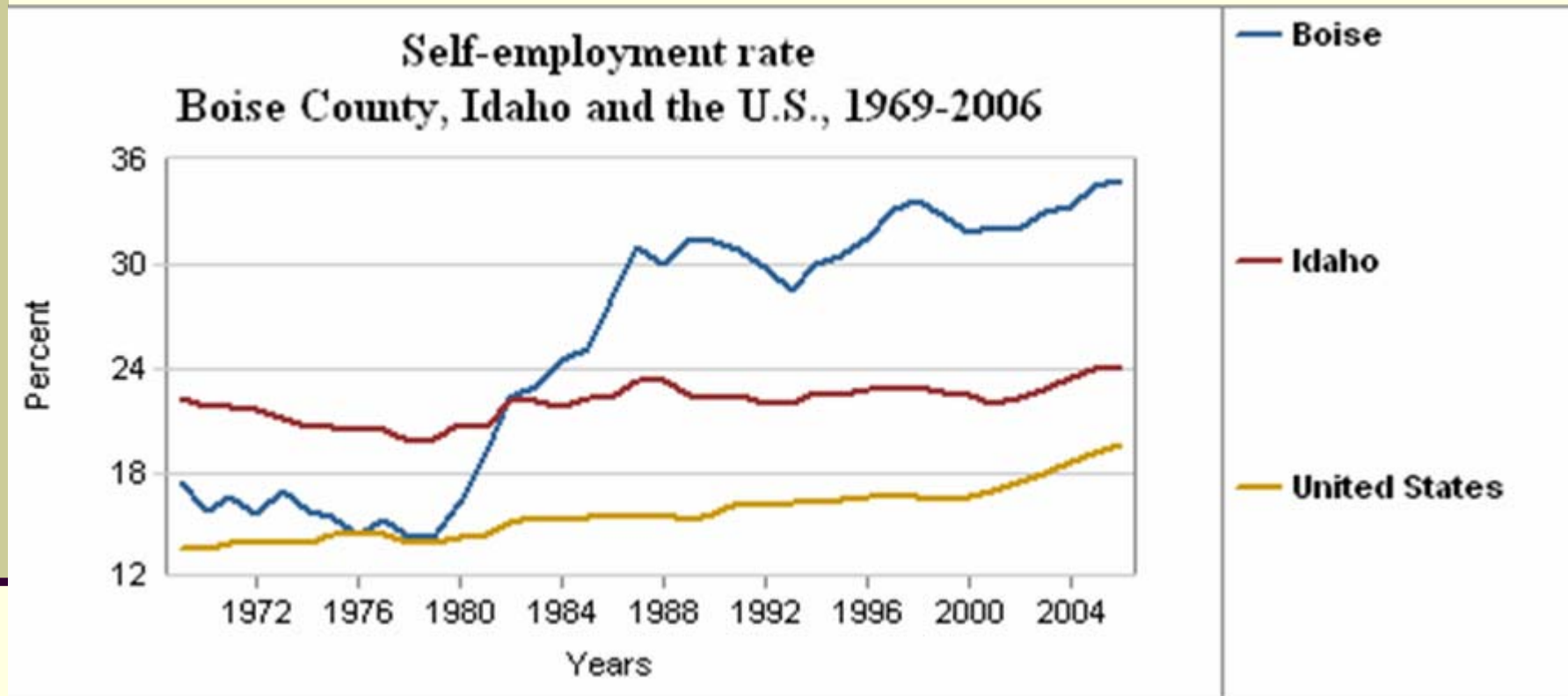
Government Employment as a Share of Total



Government Employment per 100 People



Don't Forget Proprietors!



**Key Point #5: Rise in Self-Employment >>
Importance of Entrepreneurs**