

# Community Economic Profile –Boise County

## Boise County & BLM Four Rivers Field Office

With Special Thanks to:

1. Headwaters Economic Profile System
2. Northwest Area Foundation Indicator Website
3. Idaho Dept of Commerce Community Profiles

# Four Rivers Field Office Planning Area & Resource Management Plan Update

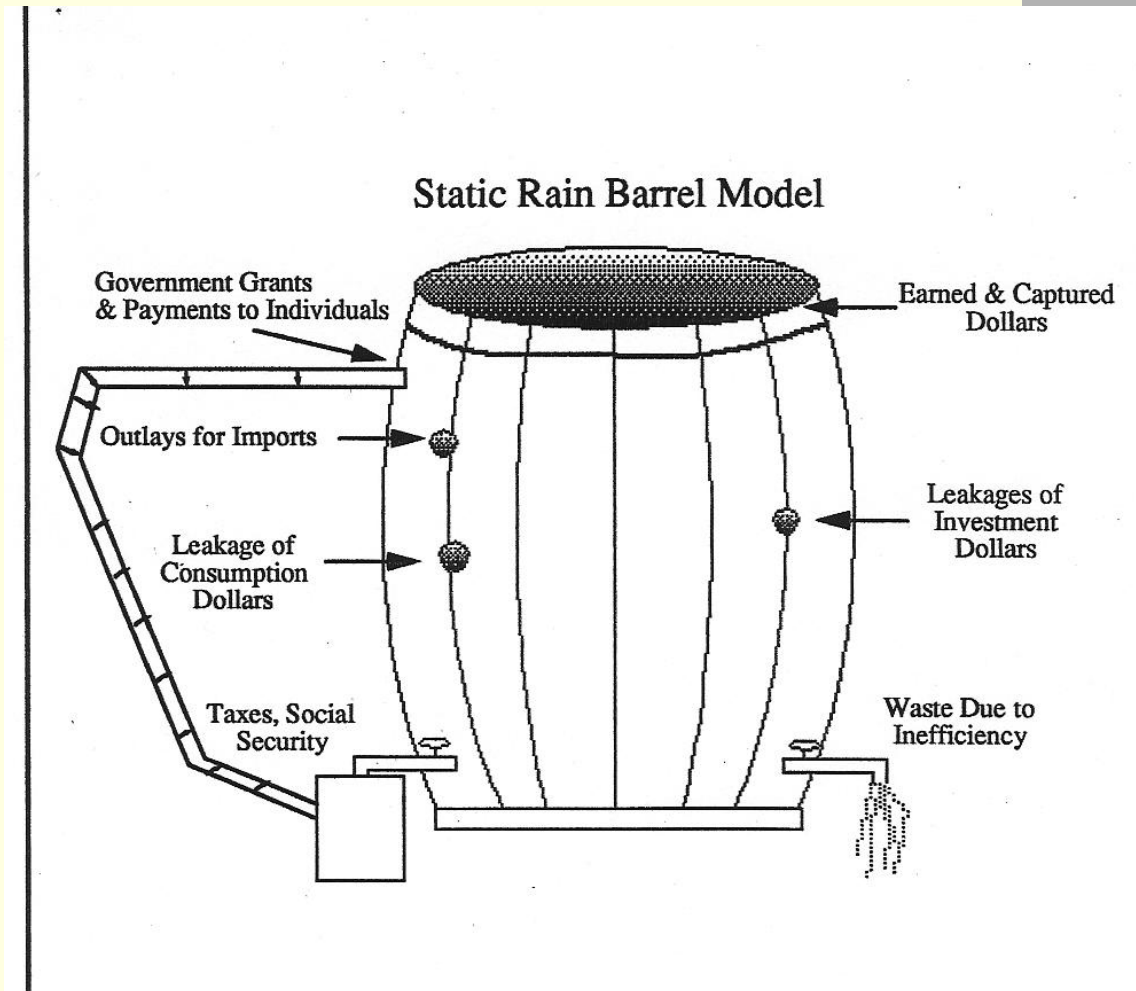


# Profile Overview

---

1. Economics 101
2. People
3. Jobs
4. Income
5. Households
6. Social aspects
7. Key Points

# A Simple Model of a Local Economy



# Population Growth in the Four Rivers Region

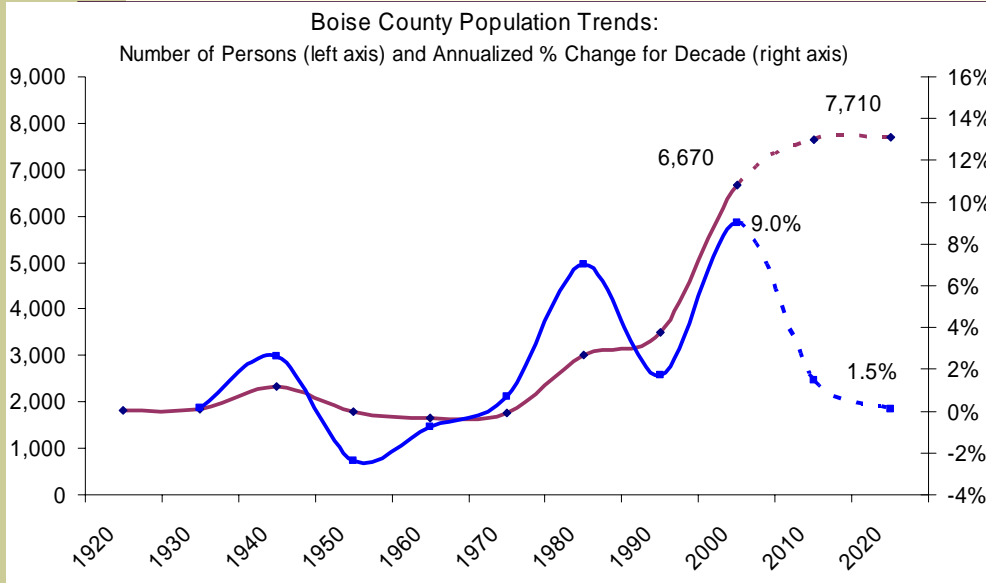
## Populations by County

	1980	1990	2000	2007	1980-90	1990-00	2000-07	1980-07
<b>Ada</b>	173,125	205,775	300,904	373,406	18.9%	46.2%	24.1%	115.7%
<b>Adams</b>	3,347	3,254	3,476	3,546	-2.8%	6.8%	2.0%	5.9%
<b>Boise</b>	2,999	3,509	6,670	7,571	17.0%	90.1%	13.5%	152.5%
<b>Canyon</b>	83,756	90,076	131,441	179,381	7.5%	45.9%	36.5%	114.2%
<b>Elmore</b>	21,565	21,205	29,130	28,856	-1.7%	37.4%	-0.9%	33.8%
<b>Gem</b>	11,972	11,844	15,181	16,496	-1.1%	28.2%	8.7%	37.8%
<b>Payette</b>	15,825	16,434	20,578	22,751	3.8%	25.2%	10.6%	43.8%
<b>Valley</b>	5,604	6,109	7,651	8,945	9.0%	25.2%	16.9%	59.6%
<b>Washington</b>	8,803	8,550	9,977	10,147	-2.9%	16.7%	1.7%	15.3%
<b>FRFO Regio</b>	<b>326,996</b>	<b>366,756</b>	<b>525,008</b>	<b>651,099</b>	<b>12.2%</b>	<b>43.1%</b>	<b>24.0%</b>	<b>99.1%</b>
<b>% of State</b>	34.6%	36.4%	40.6%	43.4%				
<b>State Total</b>	944,127	1,006,749	1,293,953	1,499,402	6.6%	28.5%	15.9%	58.8%

Source: U.S. Census historical data with 2007 Census update by Claritas

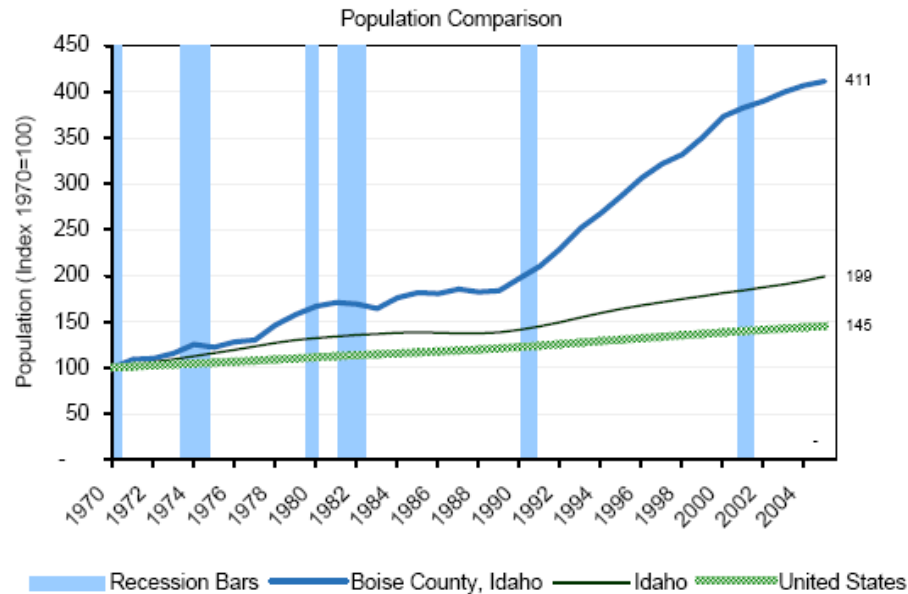
**Key Point #1: Boise County has been growing rapidly, especially outside its cities.**

# Boise County Population: Rapid Growth, Boom in 1990s



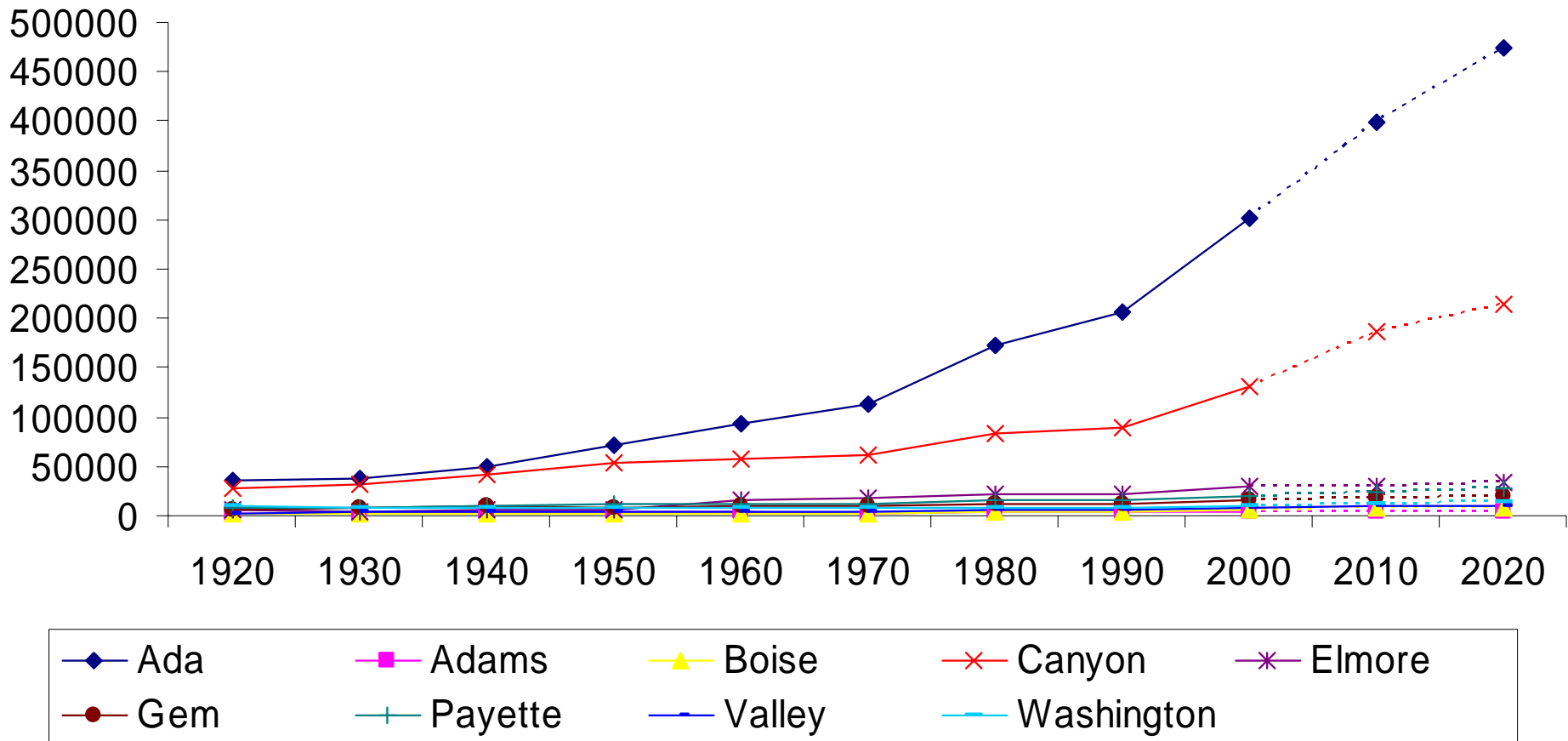
**7,440 in 2005**  
**Grew by 5,631, or 311% since 1970**  
**4.1% annual growth**

2006 Population  
 Horseshoe Bend – 824  
 Idaho City – 491  
 Crouch – 167



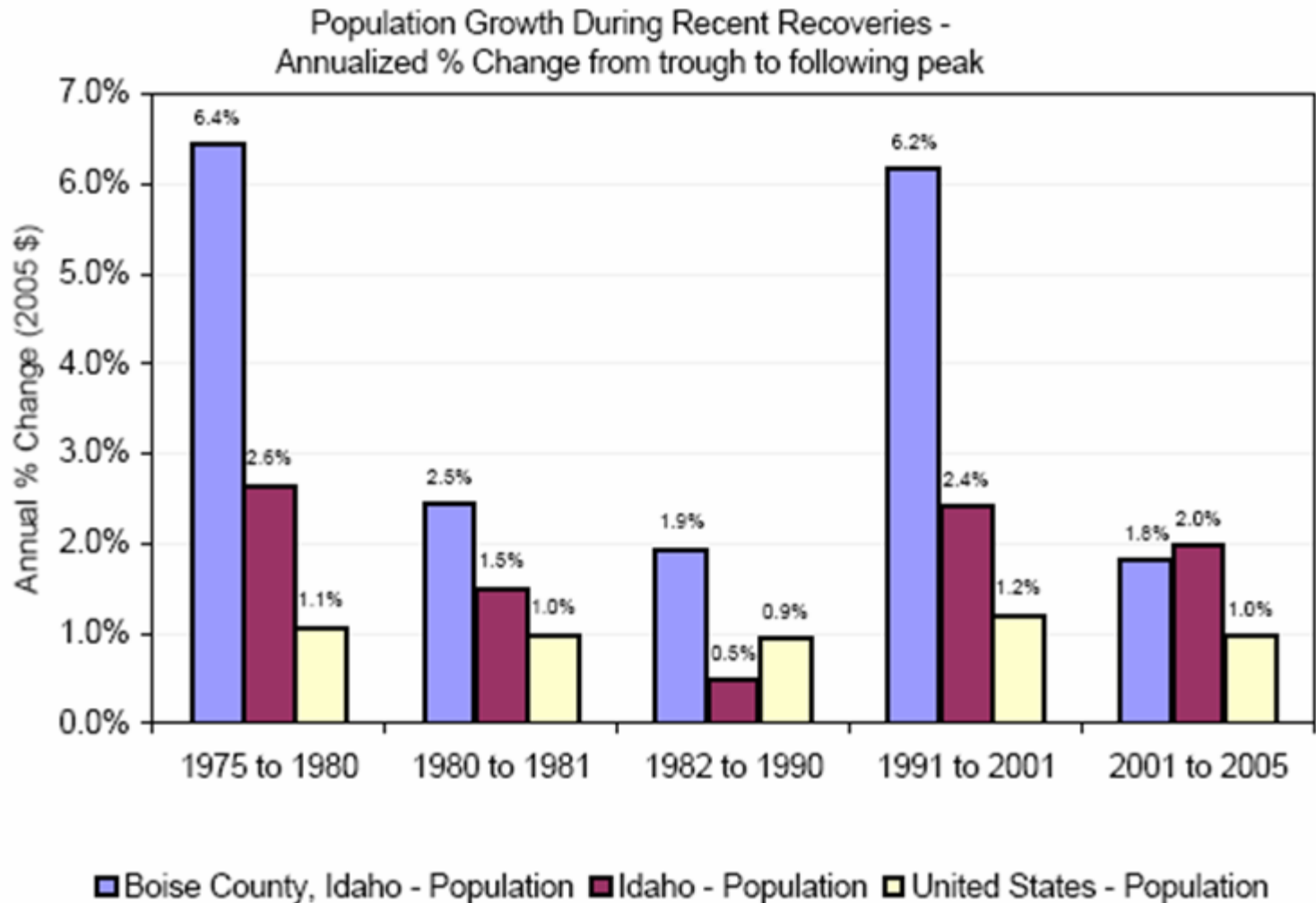
# Population Projected Growth in the Four Rivers Region

## Population of Four Rivers Counties

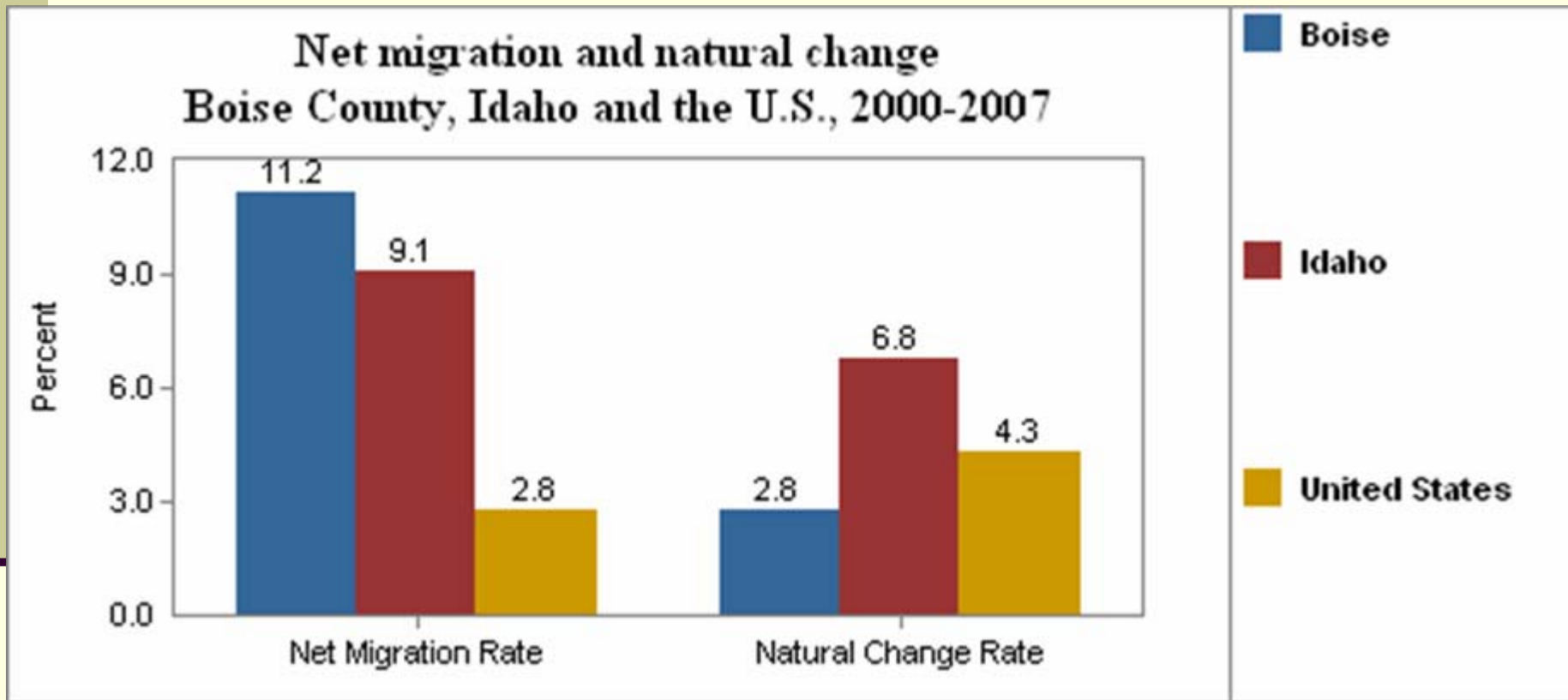


**Key Point #2: Expect more visitors from a rapidly growing Treasure Valley.**

# County Better than State in Recoveries

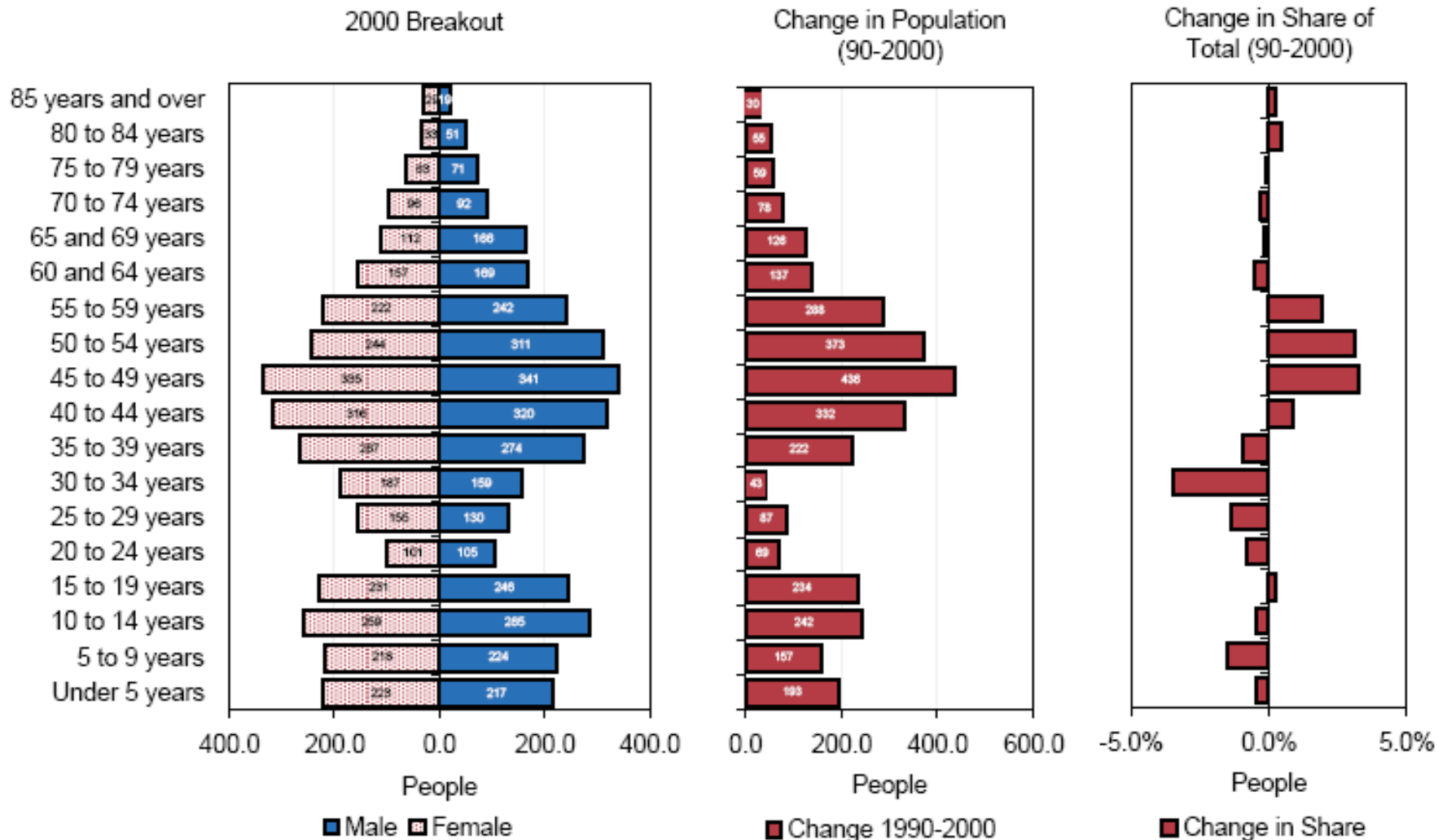


# Why is Boise County Growing So Rapidly?



**Boise County has many more people moving in than out!**

# Age Cohort Breakdown: *What can we learn?*



# Hispanic Community is Growing, But much more slowly than Idaho or U.S.

