

RMP NEWS



Volume 2, Number 3
September 2009

Boise District Office

BLM

PRELIMINARY ALTERNATIVES RELEASED FOR PUBLIC COMMENT



The Bureau of Land Management's (BLM) Four Rivers Field Office will hold public meetings on Preliminary Alternatives for its new Resource Management Plan (RMP).

Public involvement continues to be critical for this multi-year planning process. The BLM held meetings in Summer 2008

which provided opportunities for participation in identifying issues to be addressed in management alternatives. The BLM received 270 comments at that time.

The Four Rivers Field Office will continue the collaborative approach with the public, elected officials, State and local agencies to gain input during the plan's development.

At the October meetings, BLM will solicit comments on the preliminary alternatives. The days and times are:

- Oct. 13 6:30-8 p.m. Fire Department, Mountain Home**
- Oct. 15 6:30-8 p.m. Forest Service/ District Ranger's Office, Council**
- Oct. 20 6:30-8 p.m. District Court Room, Payette**
- Oct 22 6:30-8 p.m. Ray Robison Community Hall, Idaho City**
- Oct. 26 6:30-8 p.m. County Courthouse, Emmett**
- Oct. 29 6:30-8 p.m. BLM District Office, Boise**

For more information, contact me at (208) 384-3305 or e-mail jonathan_m_beck@blm.gov.

Jon Beck
Planning Team Lead



HOW THE BLM DECIDES IF AN ISSUE IS RELEVANT

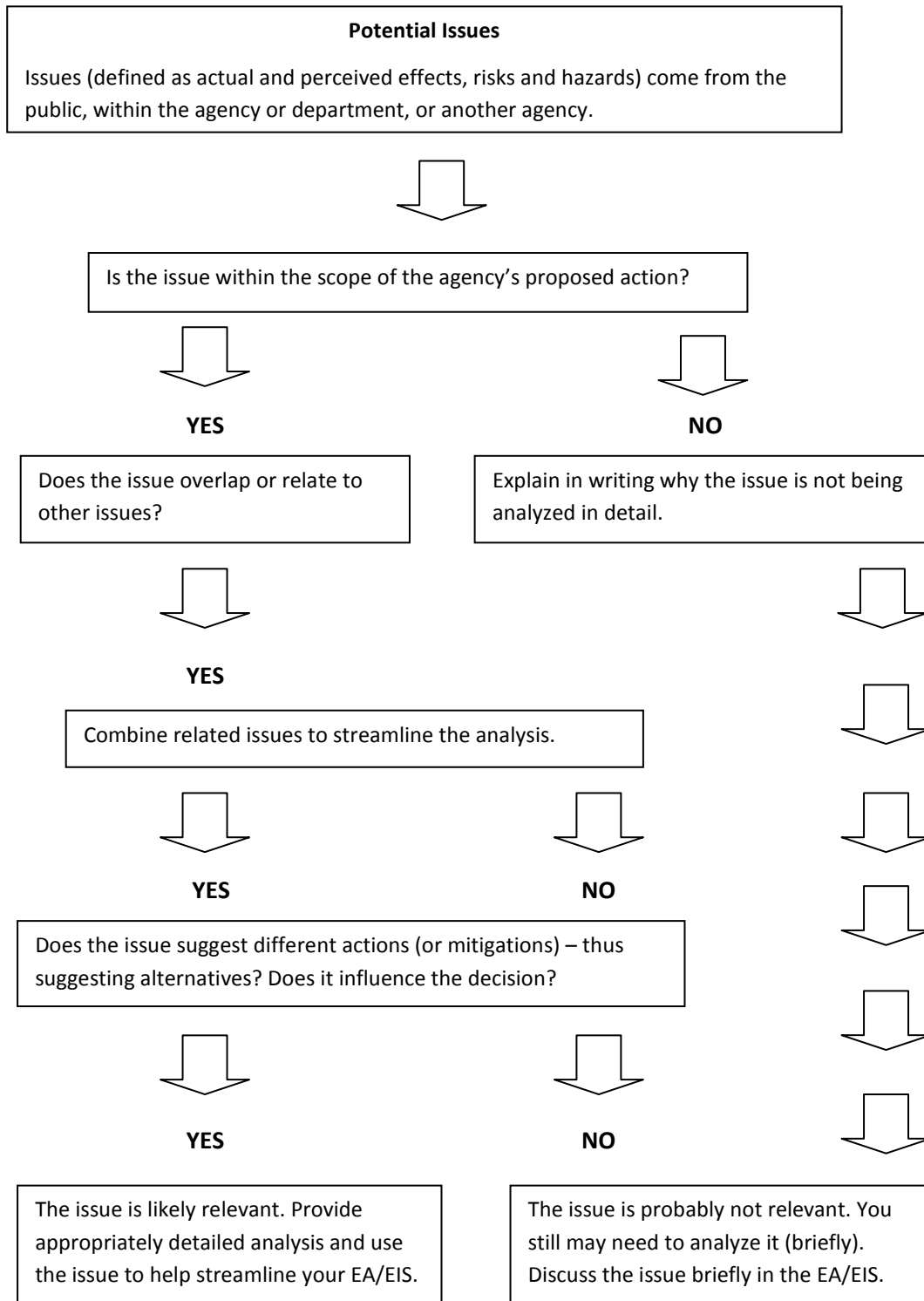


Chart information courtesy of *How to Write Quality EISs and EAs* by the Shipley Group.

PUBLIC ISSUES GROUPED AND BROUGHT FORWARD

1. The Planning Area's scattered land base makes it difficult to meet the public's need for recreation access while protecting and/or enhancing vegetation, soils, and fisheries /wildlife habitat.
2. Increasing demands on public land, due to population growth, are escalating user and resource conflicts which may expose unique resources/recreational experiences to loss or degradation.
3. Development of energy and energy-related infrastructure would increase user and resource conflicts and resource degradation.

THEMES USED FOR PRELIMINARY ALTERNATIVES DEVELOPMENT

Alternative A: **No-Action**

- Required as a baseline against which to compare the effects of the other alternatives

Alternative B: **Emphasize Resource Conservation**

- Emphasizes protecting natural resource values on BLM land from the potential negative impacts of population growth and increased growth
 - Protective measures, for plants and wildlife, to address increasing use of public lands

Alternative C: **Accommodate Growing Demand for Public Land Uses**

- Recognizes population growth as the leading factor for land management decisions in the Four Rivers Planning Area
 - Management actions, focused in "core areas" that accommodate population growth (recreation, community expansion, etc.)

Alternative D: **Maximize BLM Management Efficiency**

- Proposes focused, multiple use of "core areas" for efficient and effective management
 - Efforts would concentrate on blocks of BLM land where resources could be more effectively managed

WHAT TO EXPECT NEXT IN THE RMP PROCESS

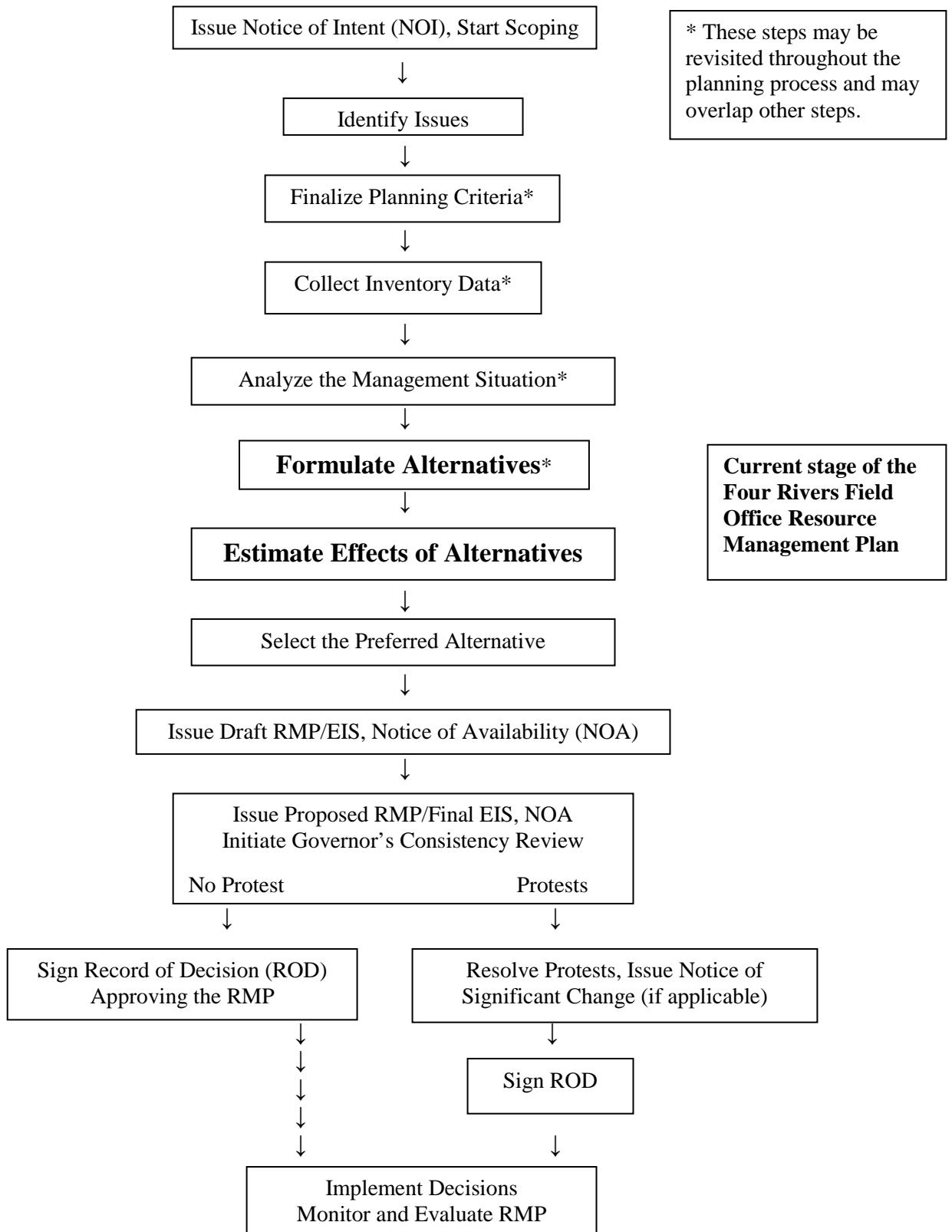
Fall 2009

Public meetings will be held to solicit comment on the preliminary alternatives.

Spring 2010

The BLM completes the analysis of the alternatives and releases the Draft Environmental Impact Statement and Resource Management Plan (DEIS/RMP) for public comment.

RMP/EIS LEVEL PLANNING PROCESS



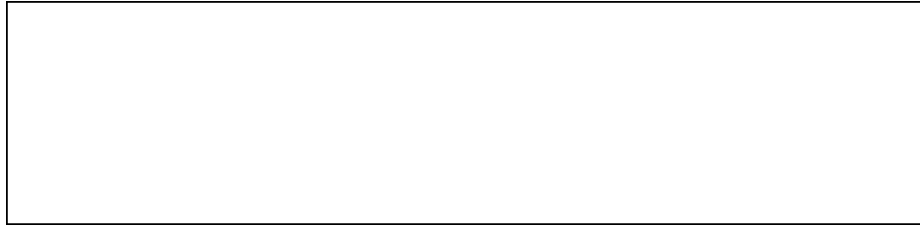
Four Rivers Field Office
Bureau of Land Management
3948 Development Avenue
Boise, ID 83705

STAMP

Four Rivers Field Office
Bureau of Land Management
3948 Development Avenue
Boise, ID 83705

TAPE HERE

Four Rivers Field Office
Bureau of Land Management
3948 Development Avenue
Boise, ID 83705



If you **no longer wish to receive information on the Four Rivers RMP**, please fill out the following, fold, tape and mail.

[] Please remove my name from the RMP mailing list.

Name (please print) _____

Organization _____

Mailing Address _____

E-mail Address (optional) _____