

# RMP NEWS

Volume 2, Number 1  
April 2008

## FOUR RIVERS Planning Area



## INVITATION TO PARTICIPATE

The Bureau of Land Management's (BLM) Boise District is beginning a new Resource Management Plan for the Four Rivers Planning Area which encompasses about 783,000 public land acres within nine counties. This area lies north of the Snake River from approximately Glens Ferry in the southeast, west to the Oregon border and north to McCall. Much of the planning area is comprised of interspersed sections of public, private, State or Forest Service lands.

Resource Management Plans (RMPs) are the land use documents used by the BLM to guide land use decisions and management actions on public lands for 20 years or more. RMP-level decisions establish goals and objectives (i.e., desired future conditions), the measures needed to achieve those goals and objectives and the parameters for resource use on BLM lands.

RMPs identify lands that are open or available for certain uses, including any applicable restrictions, and lands that are closed to certain uses. RMP decisions

are made on a broad scale and guide subsequent site-specific implementation decisions.

For example, an RMP decision would determine if an area should be open, closed or limited for Off-Highway Vehicle (OHV) use. A subsequent site-specific implementation decision would address specific route designations.

RMP level decisions may have broad implications for those who manage adjacent lands or resources.

If your group or organization would like more information on this process, please contact me at (208) 384-3305 or e-mail me at [jonathan\\_m\\_beck@blm.gov](mailto:jonathan_m_beck@blm.gov).

This edition of the *RMP News* contains a series of questions and answers, map and a chart that describes the Planning Process.

Jon Beck  
Planning Team Lead



## What issues are typically addressed during the RMP process?

The first step in the RMP process is the identification of management issues which will be used as the foundation for the entire process. Examples of issues include:

- special status species management
- lands to be retained or potentially made available for disposal
- recreation management
- special designation evaluations, i.e, Areas of Critical Environment Concern (ACEC) and Wild and Scenic Rivers (WSR)
- access

## How are issues identified and alternatives developed?

The public is encouraged to participate in the four step process leading to publication of the RMP/EIS.

### Step 1: Scoping and Issue Identification

Public issues and concerns that need to be resolved are identified through this process. Issues may stem from new information or changed circumstances, the need to address environmental concerns or a need to reassess the appropriate mix of allowable uses. Resource protection that may require special designations begins at this point.

### Step 2: Assess Information and Identify Where Issues can be Combined and Prioritized

Existing information can be directly incorporated into the assessment process which involves synthesizing, analyzing and interpreting data for a defined purpose. Assessment differs from inventory and monitoring which are data collection activities. Planning-related assessments generally address four key concepts: status, trend, risk and opportunity. These four concepts will be

used to identify outcomes that address the issues.

### Step 3: Alternative Development

A range of desired outcomes, representing different levels or degrees of protection and use, may be evaluated as different alternatives to determine which combination best meets the present and future needs of the American people, while assuring the long-term health of the land and its resources.

### Step 4: Analysis of Alternatives and Selection of the Plan

The alternative that best resolves the issues pertinent to the planning effort, meets statutory requirements and most closely achieves the plan goals, and are consistent with BLM policies will be identified as the preferred alternative and proposed plan. Following public review, consistency determinations and the public protest process, the approved plan and the rationale for its selection will be identified and adopted.

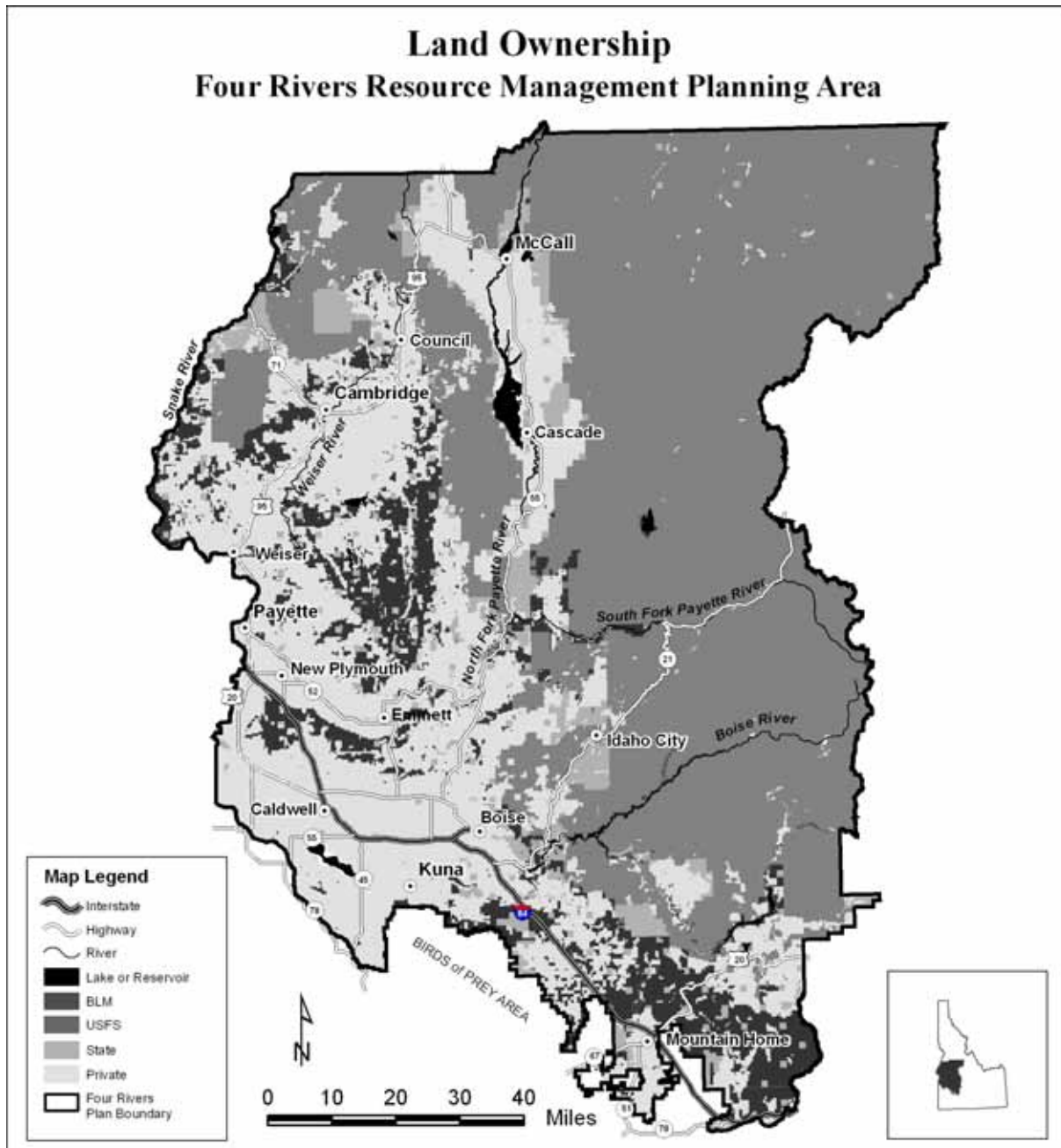
## How can I be involved in this process?

The BLM will use a collaborative approach for this RMP to allow the public, elected officials and public/private agencies a variety of opportunities for input on the plan's development. Many approaches will be used to encourage input, participation and a sense of ownership in this RMP.

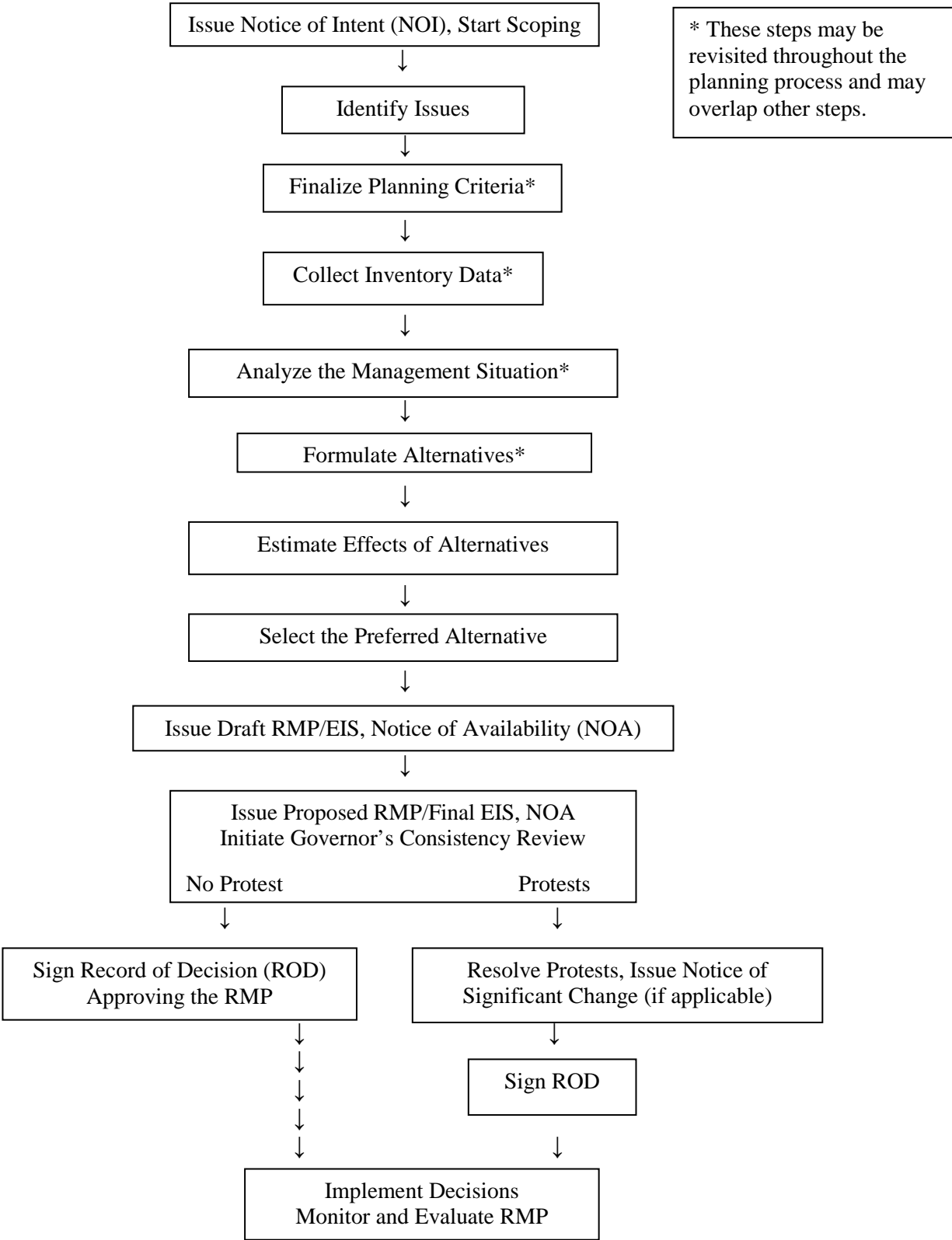
Public involvement will be critical for this multi-year planning process. In addition to structured meetings and workshops, the BLM will provide various opportunities for participation and comment, including individual and group interviews, formal meetings, access to an RMP web site ([http://www.blm.gov/id/st/en/fo/four\\_rivers/Planning/four\\_rivers\\_resource.html](http://www.blm.gov/id/st/en/fo/four_rivers/Planning/four_rivers_resource.html)), e-mail ([Four Rivers RMP@blm.gov](mailto:Four_Rivers_RMP@blm.gov)) and written comments.

If you are interested in any aspects of this endeavor, please fill out the bottom of the address cover used in this mailing. Fold it inside the pre-addressed page, tape and place postage in the designated spot.

Your name will be added to the Four Rivers mailing list so we can ensure that you stay current with this on-going process.



# RMP/EIS LEVEL PLANNING PROCESS



Four Rivers Field Office  
Bureau of Land Management  
3948 Development Avenue  
Boise, ID 83705

STAMP

Four Rivers Field Office  
Bureau of Land Management  
3948 Development Avenue  
Boise, ID 83705

TAPE HERE

Four Rivers Field Office  
Bureau of Land Management  
3948 Development Avenue  
Boise, ID 83705

If you would like to be involved in this process, please fill out the following form, fold, tape and mail.

My main area(s) of interest are: (You may check more than one)

- Cultural Resources                       Recreation (includes Wilderness and rivers)
- Fire Issues                                       Riparian and Wetland Habitats
- Grazing     Socio-economic Impacts
- OHV/Transportation Issues       Special status plants/animals
- Land tenure
- Other (please specify) \_\_\_\_\_
- None, please remove my name from the RMP mailing list.

Name (please print) \_\_\_\_\_

Organization \_\_\_\_\_

Mailing Address \_\_\_\_\_

E-mail Address (optional) \_\_\_\_\_

Office Phone (optional) \_\_\_\_\_ Home Phone (optional) \_\_\_\_\_

Preferred Method of Notification:     Regular Mail     E-mail     Web-Updates