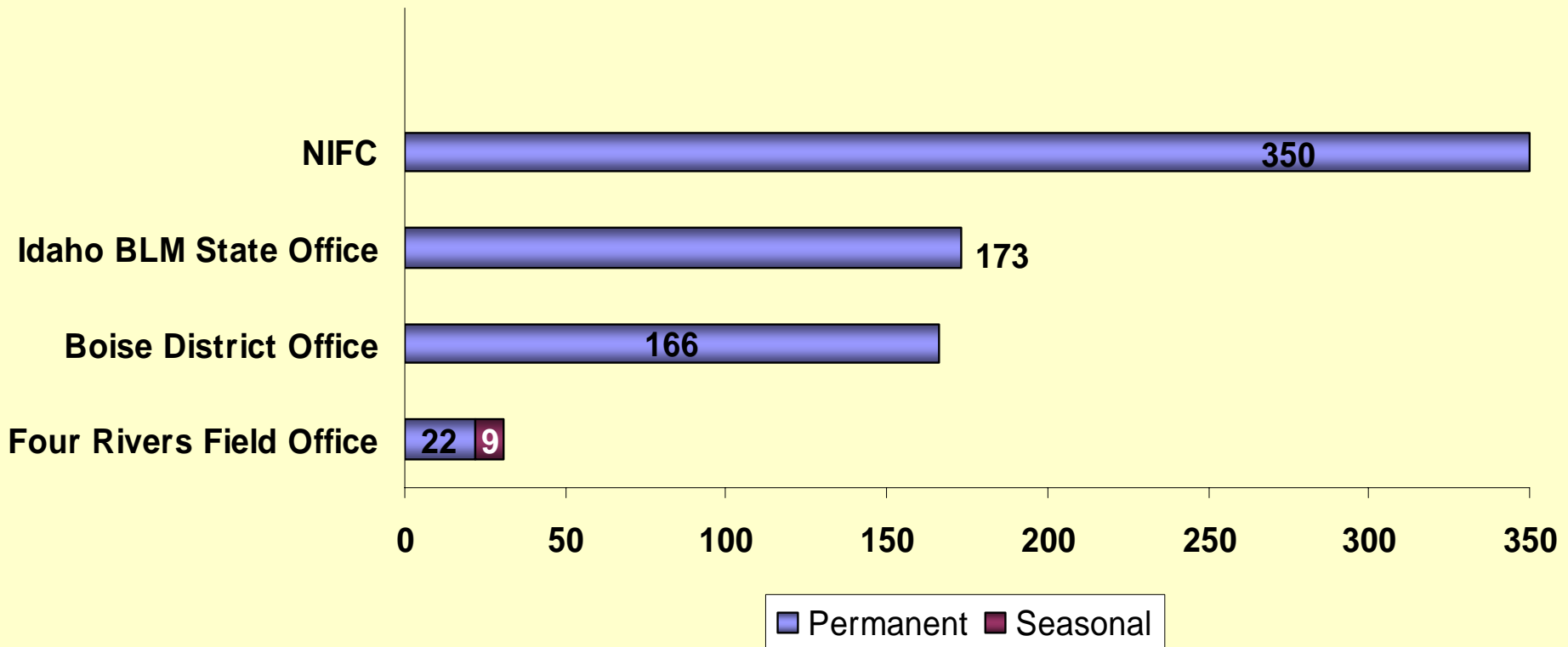


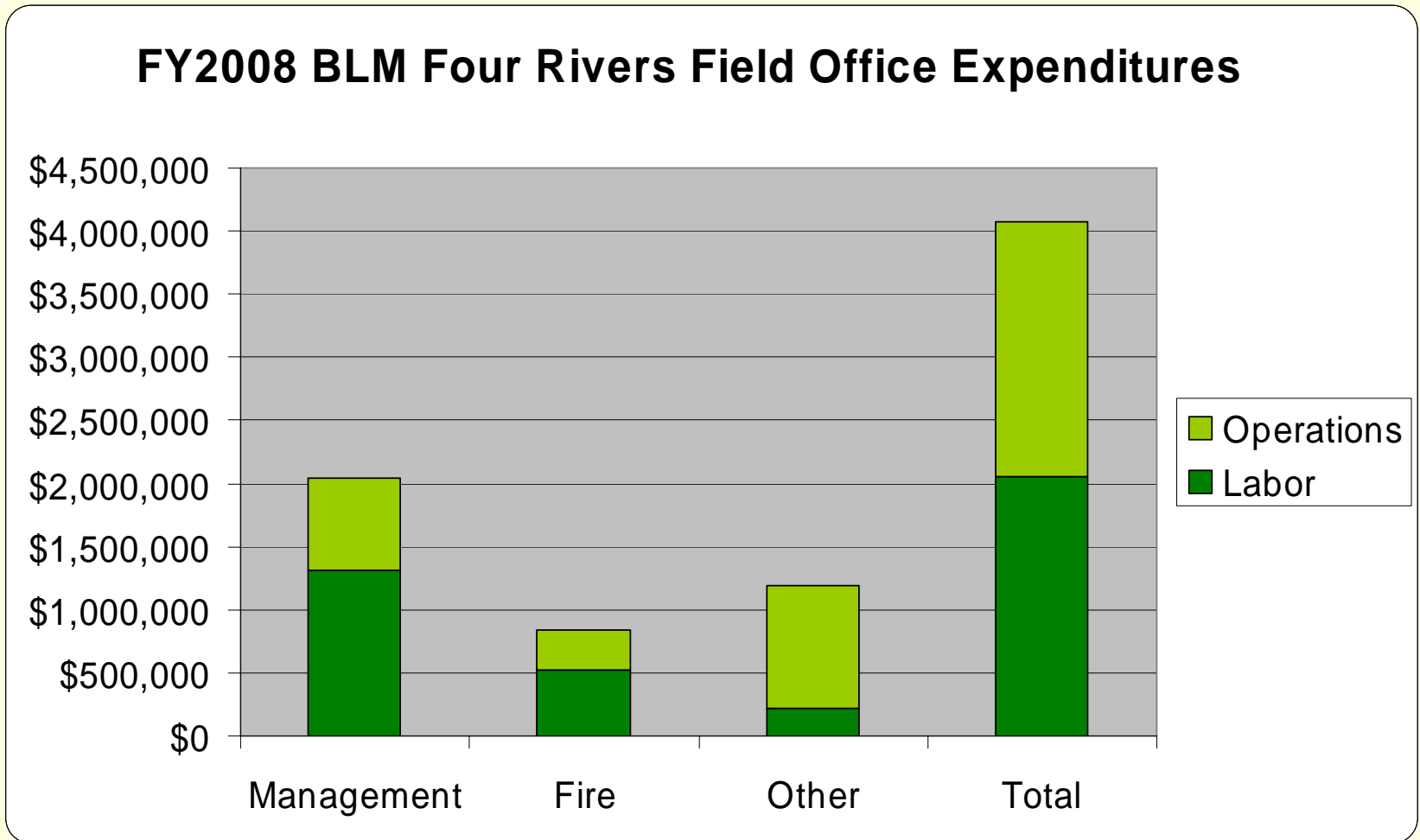
BLM EMPLOYMENT

BLM Employment in FRFO



689 total BLM employees working within the Four Rivers area

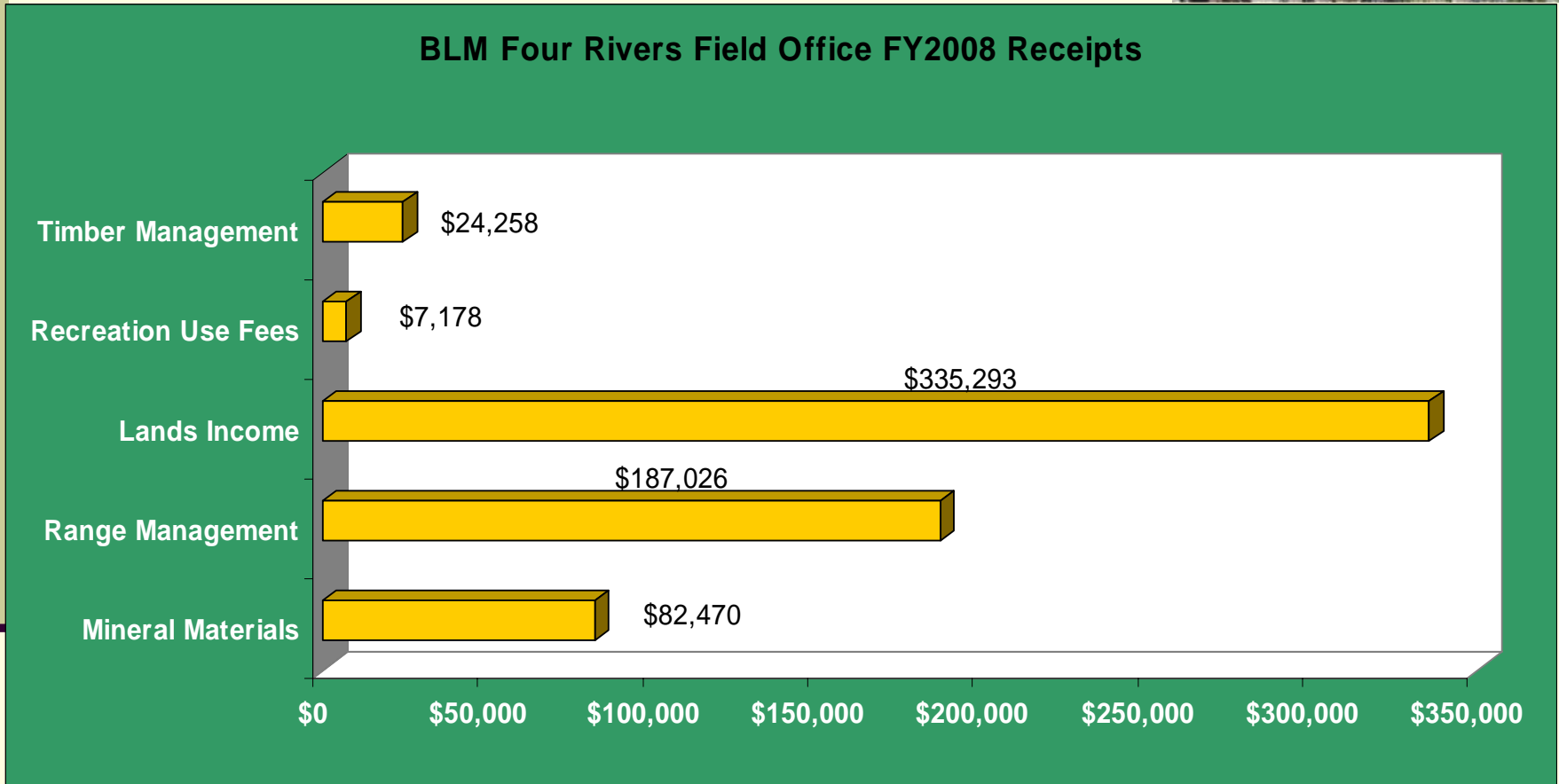
FY2008 BLM FRFO EXPENDITURES



FRFO Total Expenditures = **\$4,076,973**

Boise District Expenditures = **\$19,167,767**

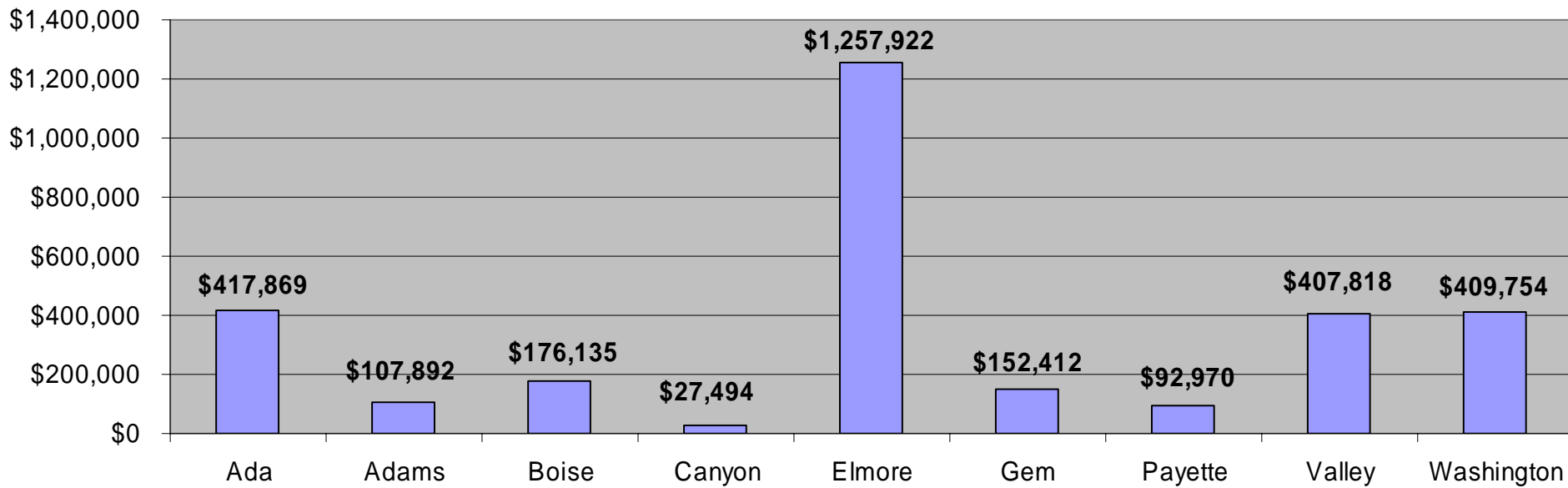
BLM FY2008 RECEIPTS



Land Sales Receipts were **\$5,063,779** in FY2008
Total Receipts in the FRFO were **\$5,651,998** in FY2008. ⁵⁵

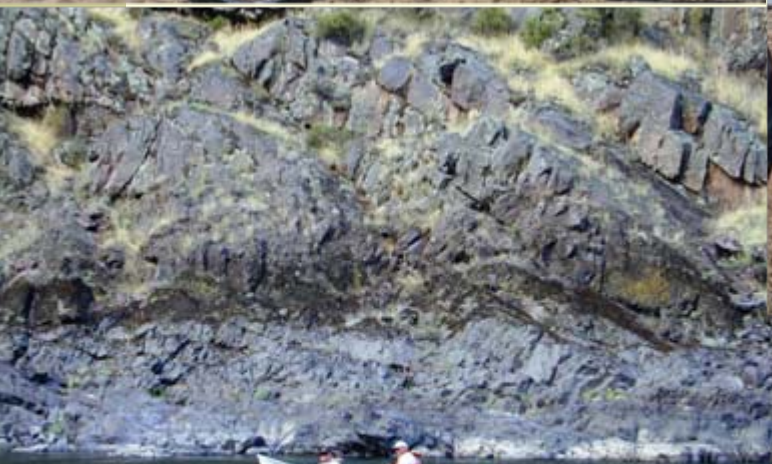
PAYMENTS IN LIEU OF TAXES

County Payments In Lieu of Taxes (PILT) FY2008



PILT Payments Idaho Total = \$16,061,016

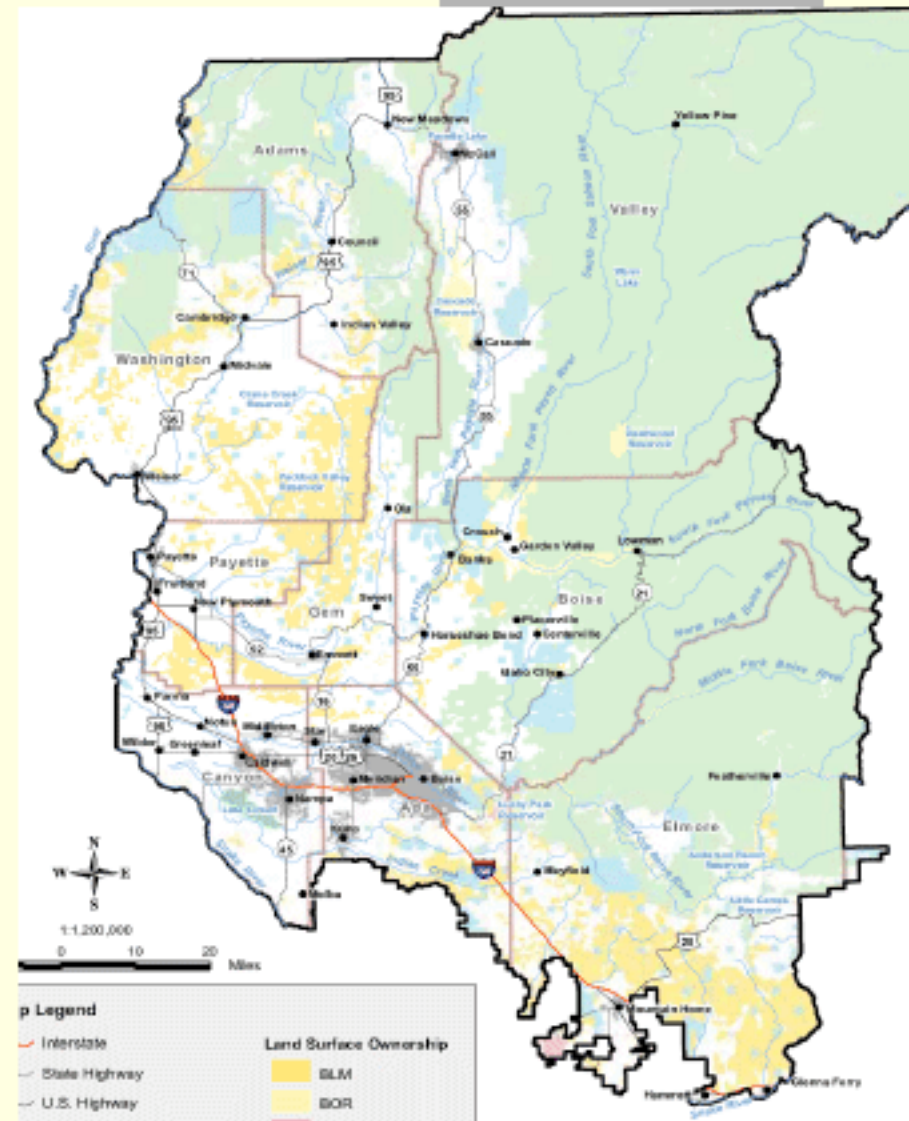
BLM RECREATION IN THE FIELD OFFICE



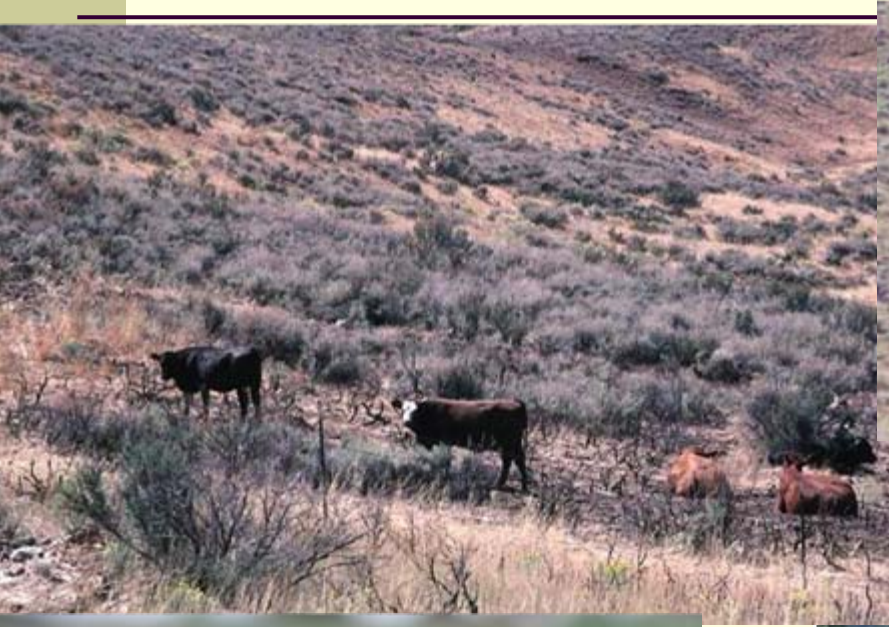
FOUR RIVERS FIELD OFFICE RECREATIONAL OPPORTUNITIES

Places of Interest:

- Bennett Hills SRMA
- Black Cliffs Climbing Area
- Boise Front Ridge to Rivers Trail System
- Bonneville Point
- Clay Peak Recreation Area
- Little Gem Cycle Park
- Oregon Trail
- Oxbow-Brownlee SRMA
- Paddock Reservoir
- Parma OHV Area
- Payette River Recreation Sites
- Steck Park
- Weiser Dunes OHV Play Area
- Weiser River Trail



CONTRIBUTING TO A WESTERN LIFESTYLE



Thanks for Listening!

Questions?
Comments?

For more info, Contact:

Dr. Dick Gardner
208-859-8878

Bootstrap1@msn.com

For questions or
comments on the
Four Rivers Field Office
Resource Management
Plan, Contact:

Mr. Jon Beck
208-384-3305

Jonathan.M.Beck@blm.gov

