

APPENDIX 11. MAPS

Information and Generation of the NCA RMP Maps

General Location: The NCA RMP affects public lands in the following general area:

Between 42 Degrees, 45 Minutes and 43 Degrees, 30 Minutes Latitude. Also between -115 Degrees, 22 Minutes, 30 Seconds and -116 Degrees, 45 Minutes Longitude.

Disclaimer for all the maps in this RMP document:

No warranty is made by the BLM for use of this data for purposes not intended by BLM. BLM does not warrant the accuracy, reliability, or completeness of these data for individual use or aggregate use with other data.

Data Sources:

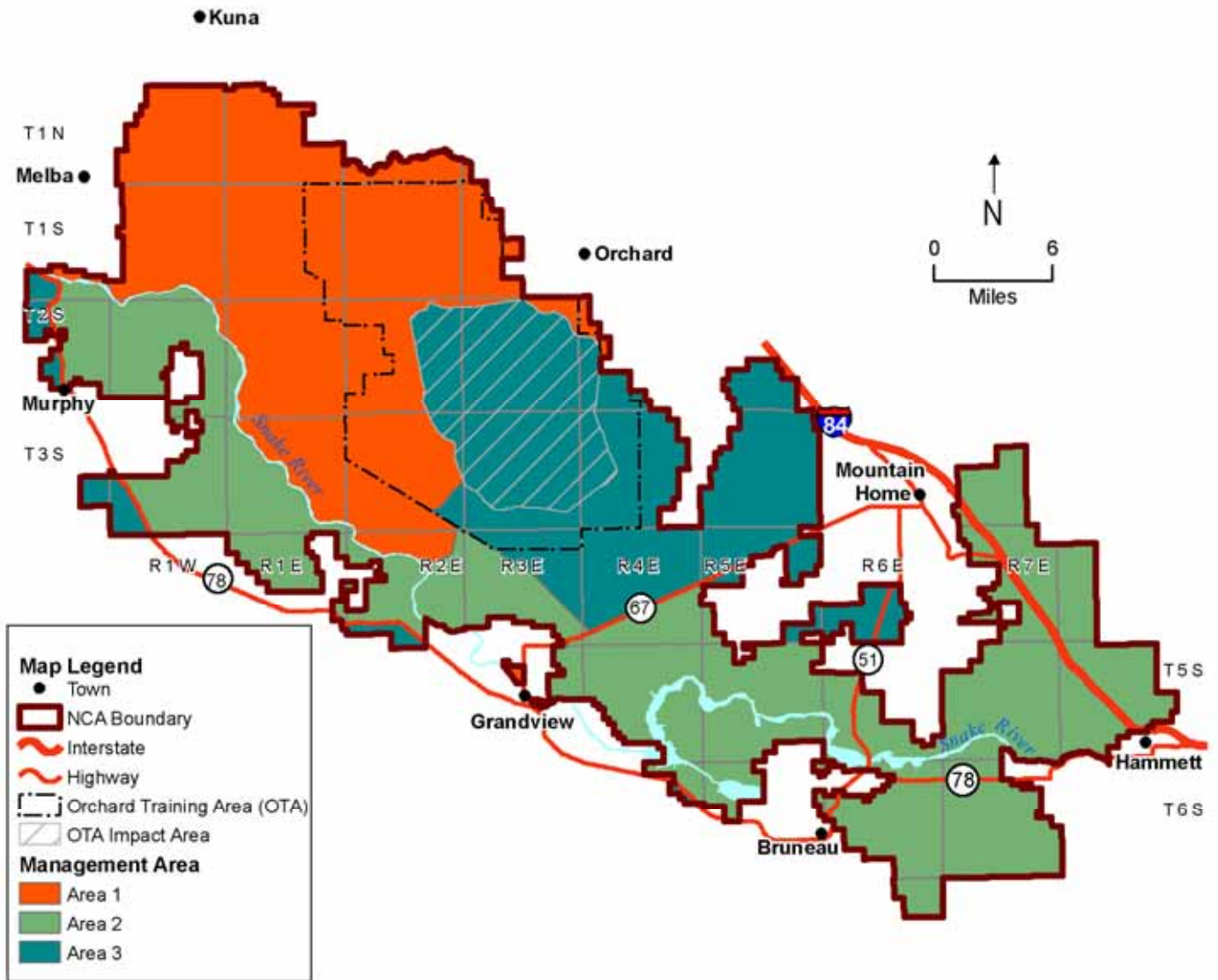
- The source data files used in data analysis and map production were collected at 1:24,000 scale whenever possible. Some exceptions are listed here. Data accuracy adheres to the national map accuracy standards. Data at 1:24,000 scale, when compared to the true horizontal ground position is +/- 40 feet accurate. The differentially corrected GPS data, when compared to the true horizontal ground position is +/- 17 feet (5 meters) accurate.
- Background data source files were acquired from several sources. United States Geological Survey (USGS) Digital Line Graphs (DLGs) and Digital Raster Graphs (DRGs) at 1:24,000 scale were used. Data was assembled in May 2001. Data used was the best available to the RMP team and was current at the time the initial maps were made. Resource Specialists serving on the RMP team provided expertise and direction for the makeup of the digital data that was used for GIS data analysis and the RMP maps. For ownership and section lines, BLM Geographic Coordinate Database (GCDB) files created at the Idaho State Office were used. Data is current to December 2003.
- Global Positioning System (GPS) data used was collected using a Trimble Geo 3 unit and then differentially corrected before it was converted to GIS data. Data is current to December 2003.
- Vegetation data was created from IKONOS (1 meter resolution) and Landsat (30 meter resolution) satellite images from 2000 and 2001. Vegetation was classified using ERDAS software. Staff from the Pacific Northwest National Laboratories (PNNL) assembled the data.
- Electric transmission line data was created by the Idaho Power Company and is current to May 2001. This data is 1:100,000 scale.



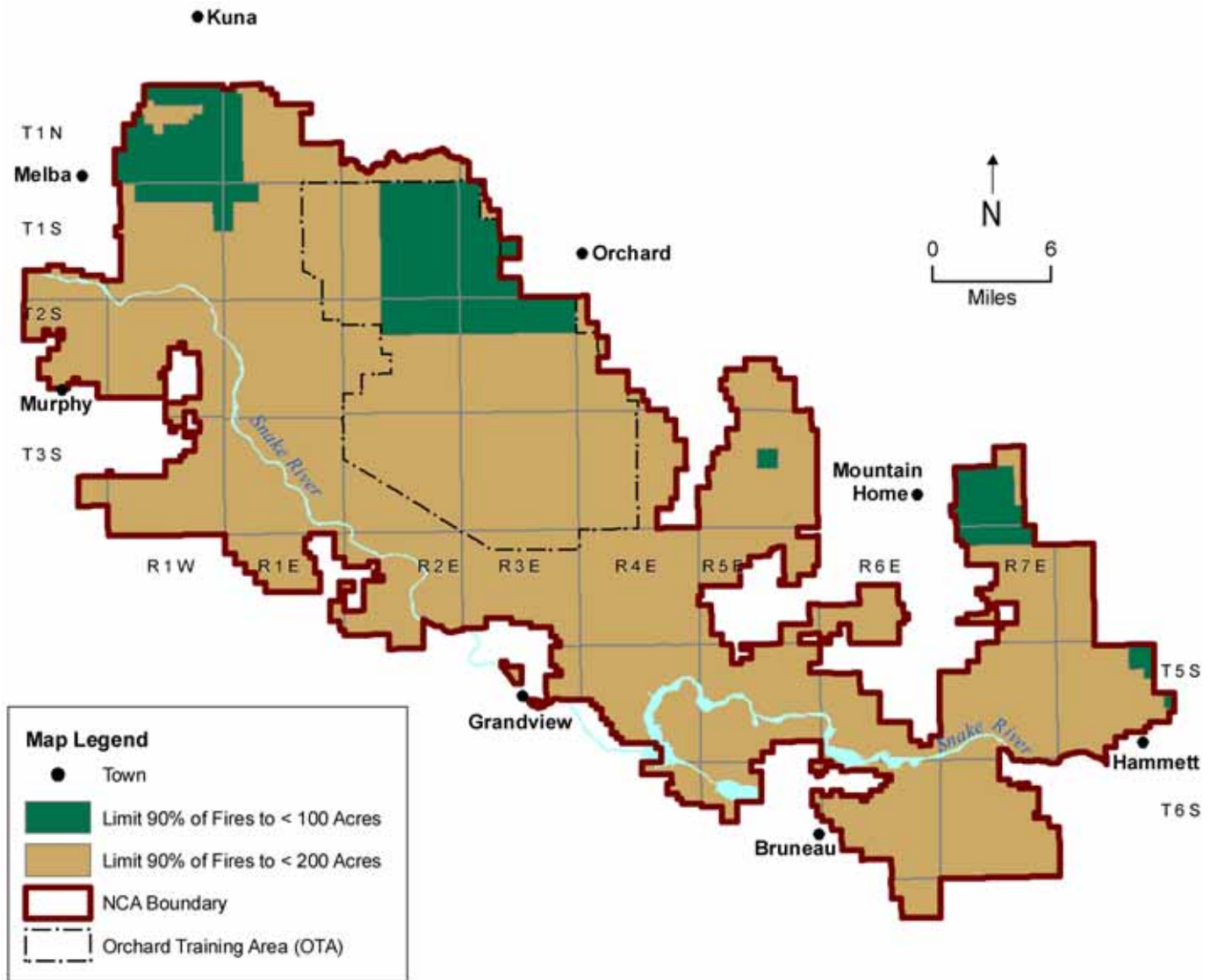
- Special Status Plants data is from the Idaho Fish and Game Department and the Conservation Data Center (CDC) database. Data is current to December 2004.
- Soils data is from the National Resources Conservation Service (NRCS) Soil Survey Geographic Database (SURRGO) and is current to September 2003.
- Slope data is from the USGS National Elevation Dataset (NED) and has a 30-meter resolution. Data is current to May 2001.
- Detailed data within the Orchard Training Area (OTA) was provided by the GIS staff at the Idaho National Guard at Gowen Field.
- Existing Visual Resource Management data was digitized from mylar overlays at 1:100,000 scale by the Interior Columbia Basin Ecosystem Management Project (ICBEMP) in 1994.
- Town locations were digitized from 1:100,000 scale data at the Boise District. Data is current to May 2001.
- Metadata collected is consistent with the Federal Geographic Data Committee Standard (FGDC).



MANAGEMENT AREA MAP

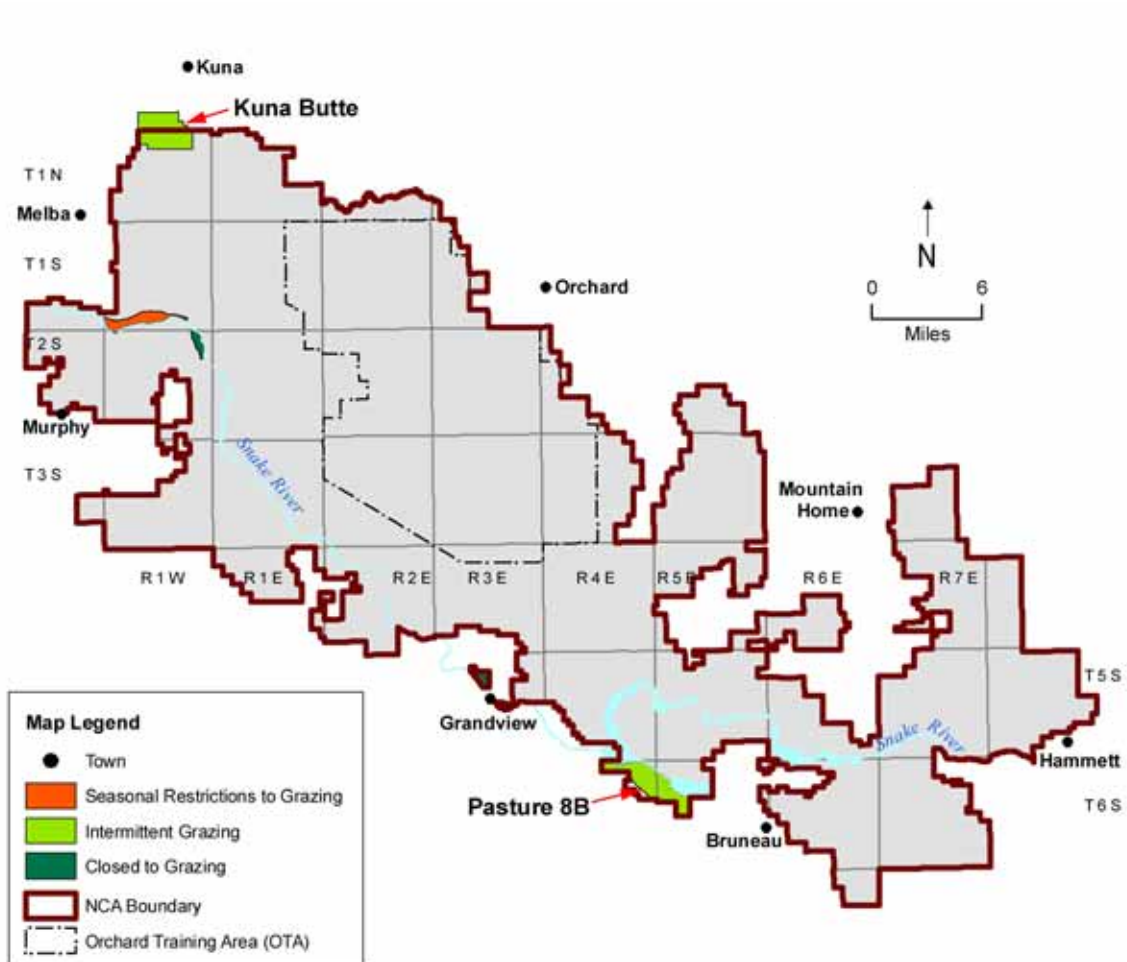


FIRE MAP

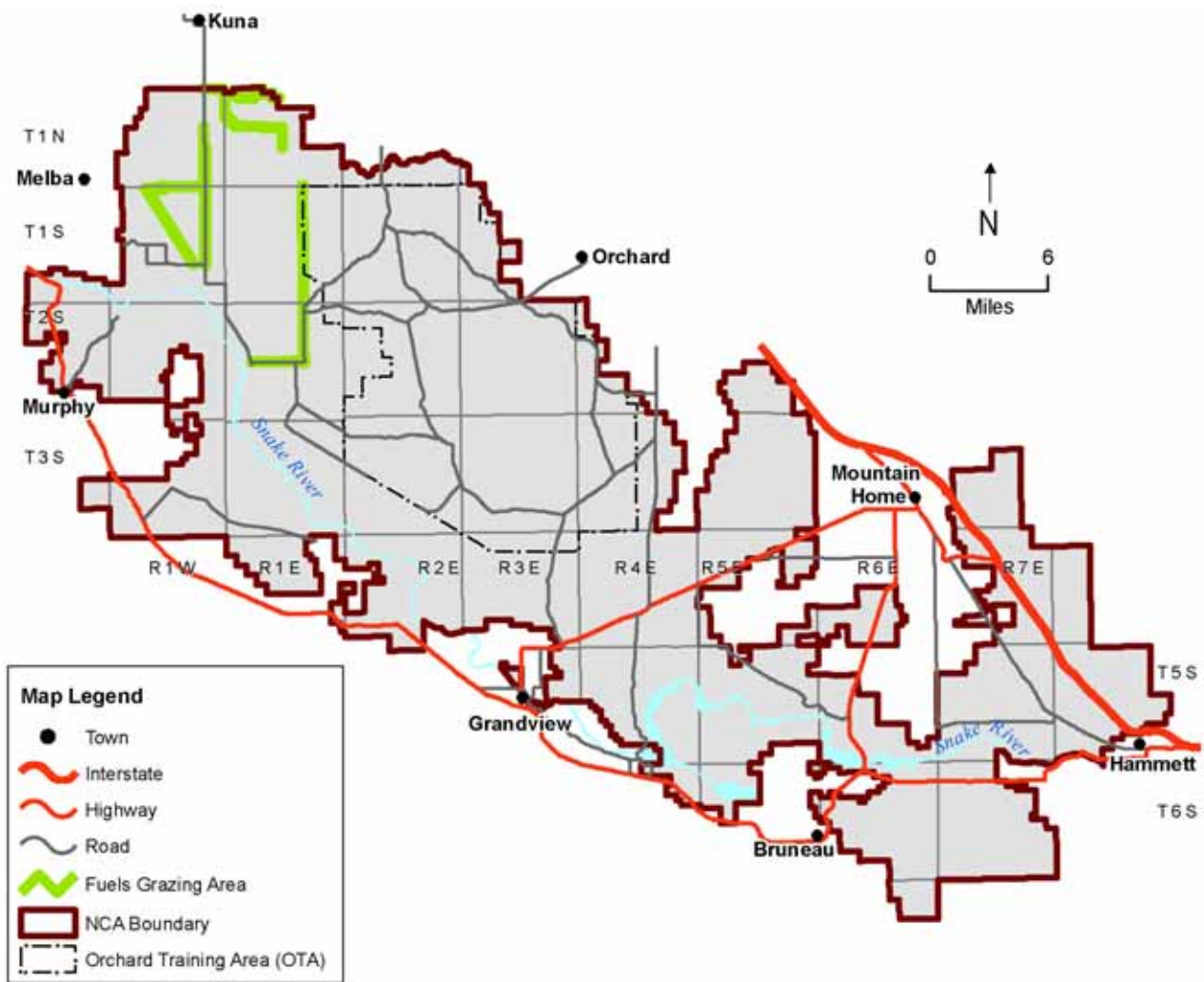


GRAZING MAPS

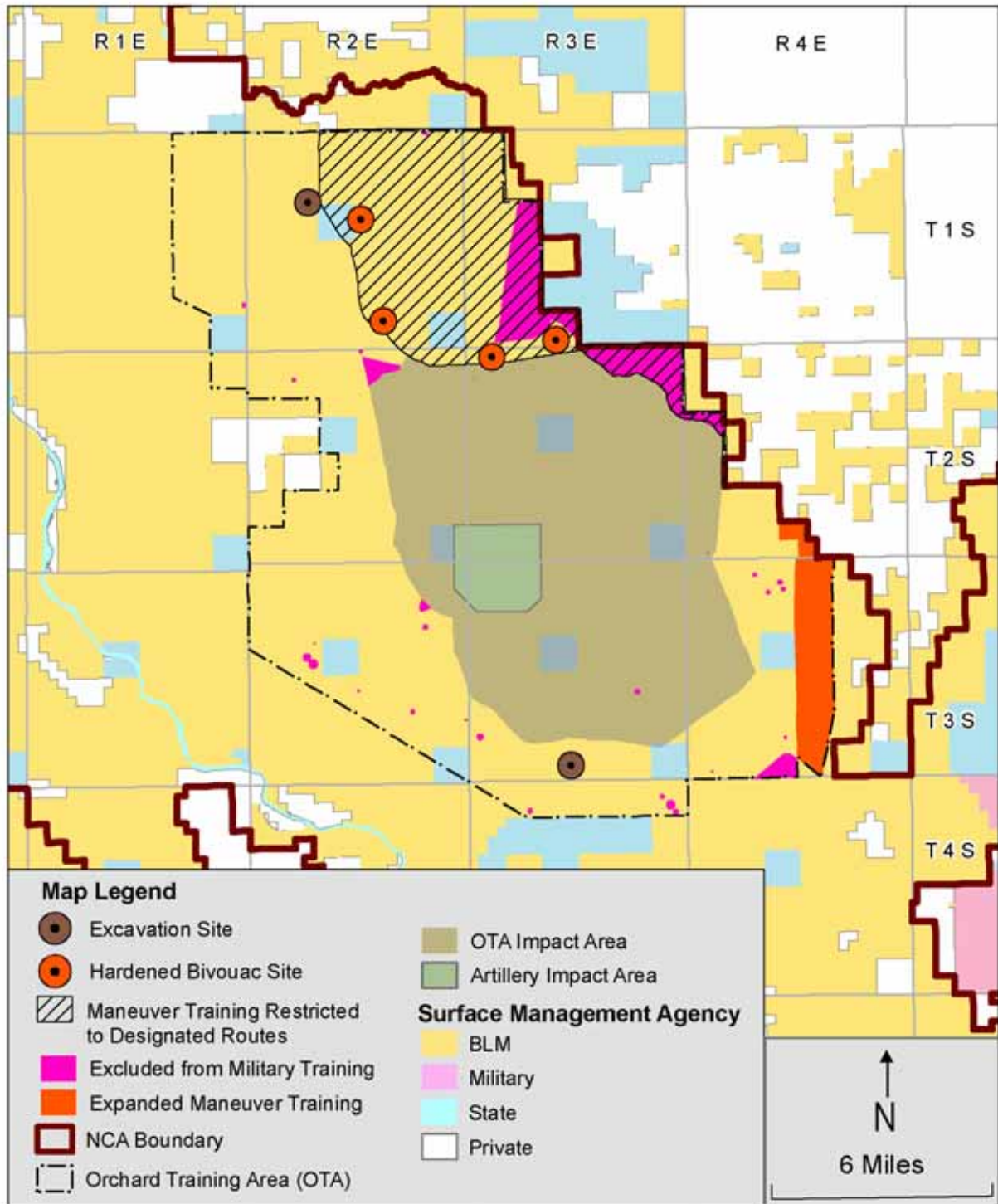
Grazing Map 1



Grazing Map 2

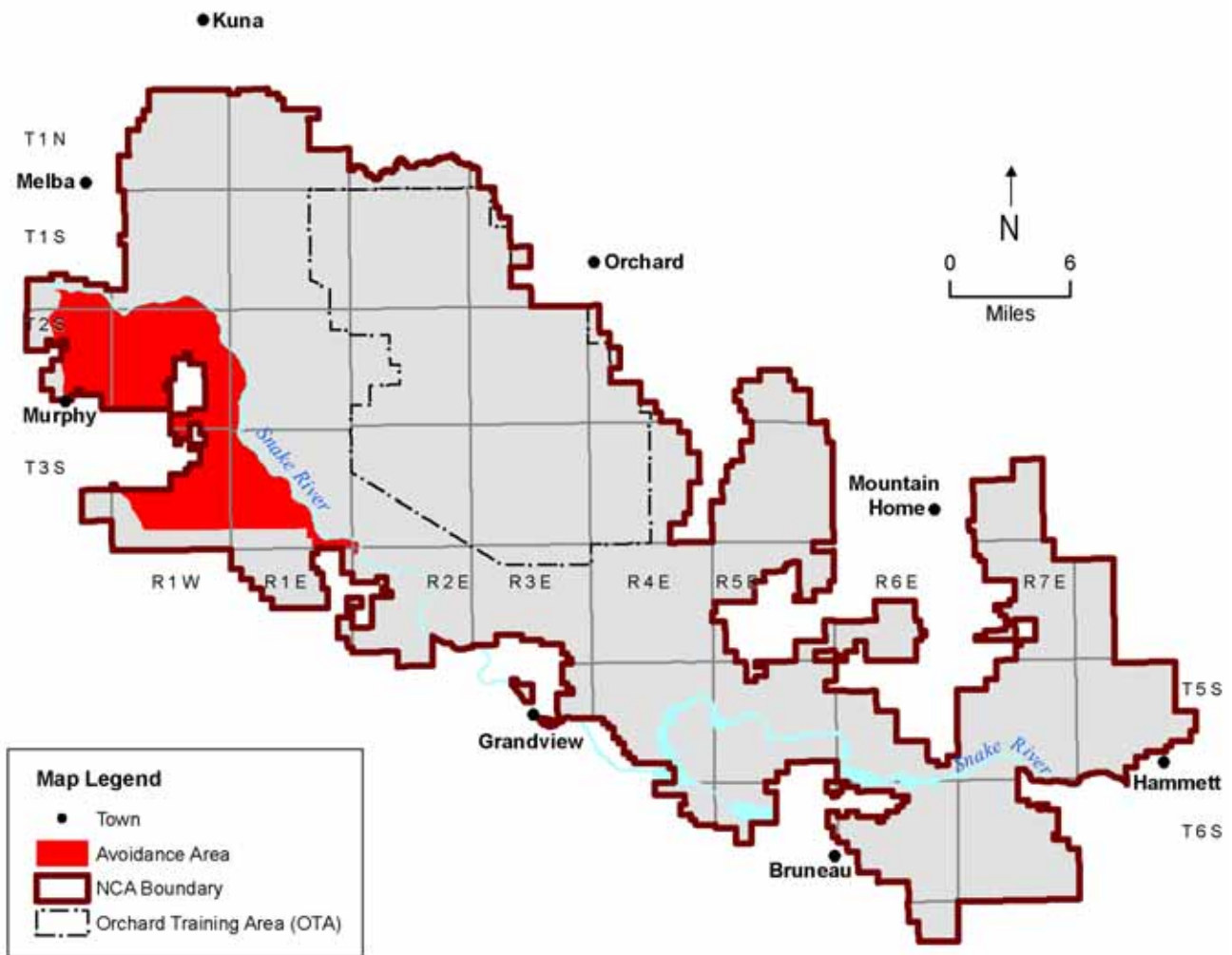


IDAHO ARMY NATIONAL GUARD (IDARNG) MAP

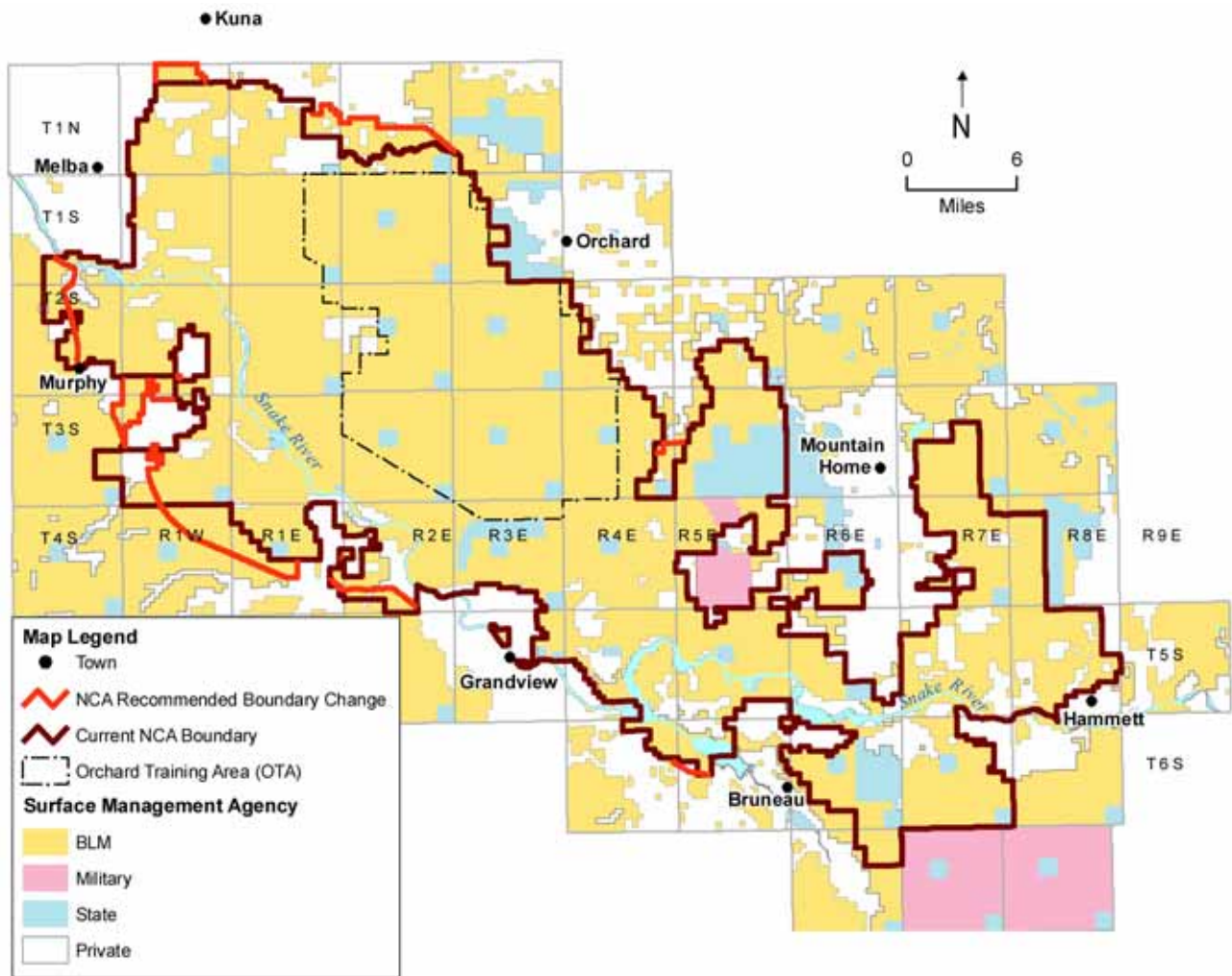


LANDS AND REALTY MAPS

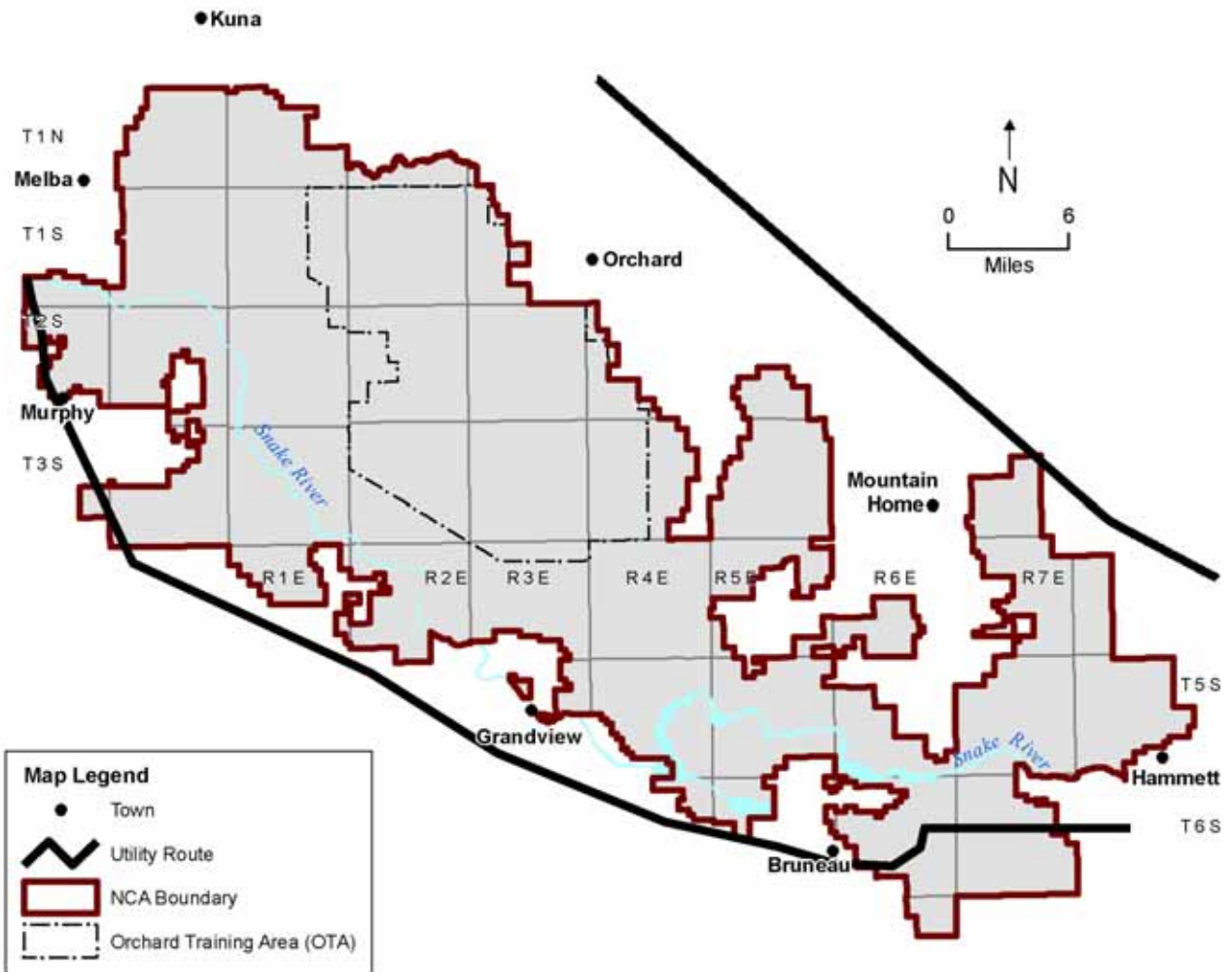
Lands Map 1



Lands Map 2

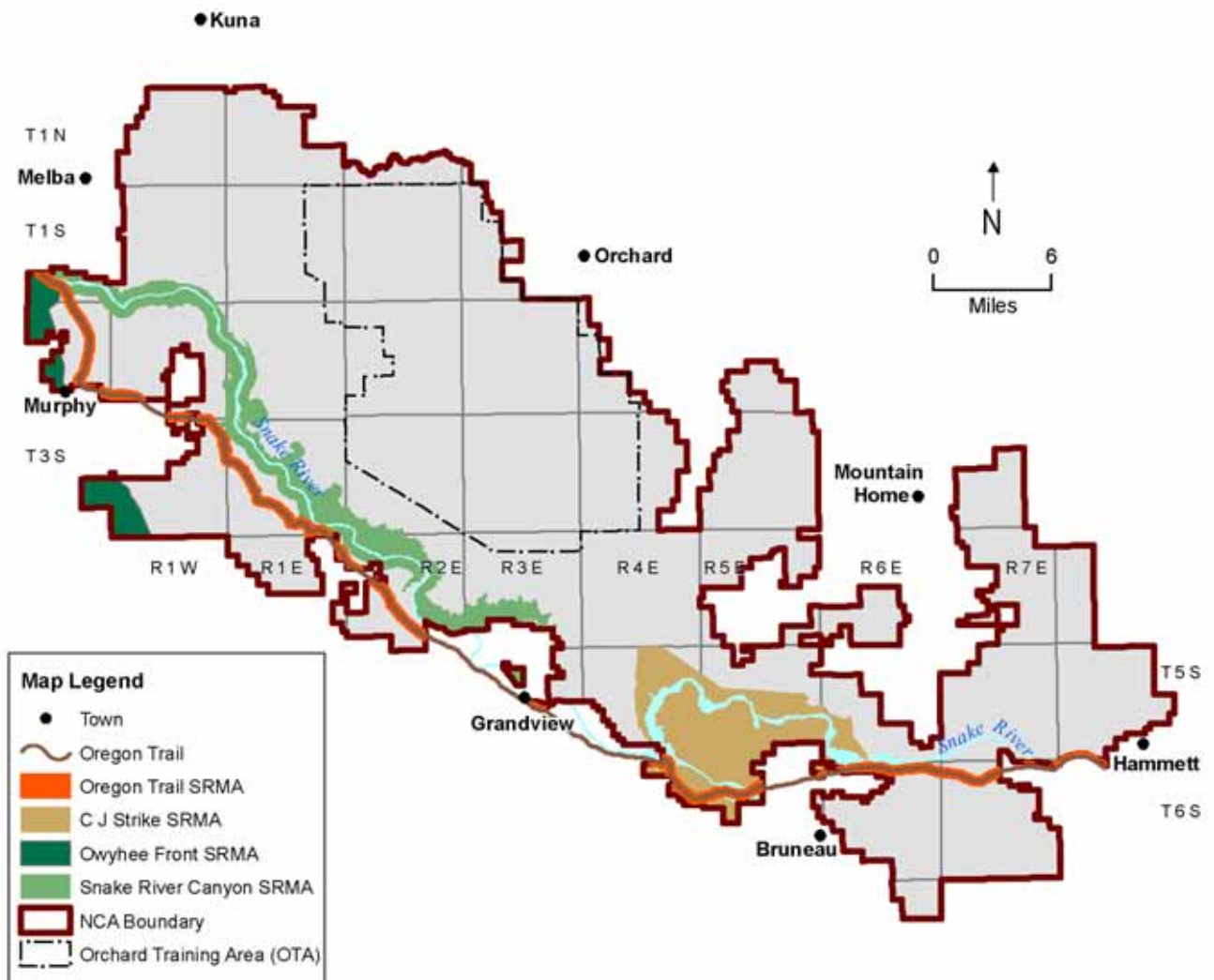


Lands Map 3

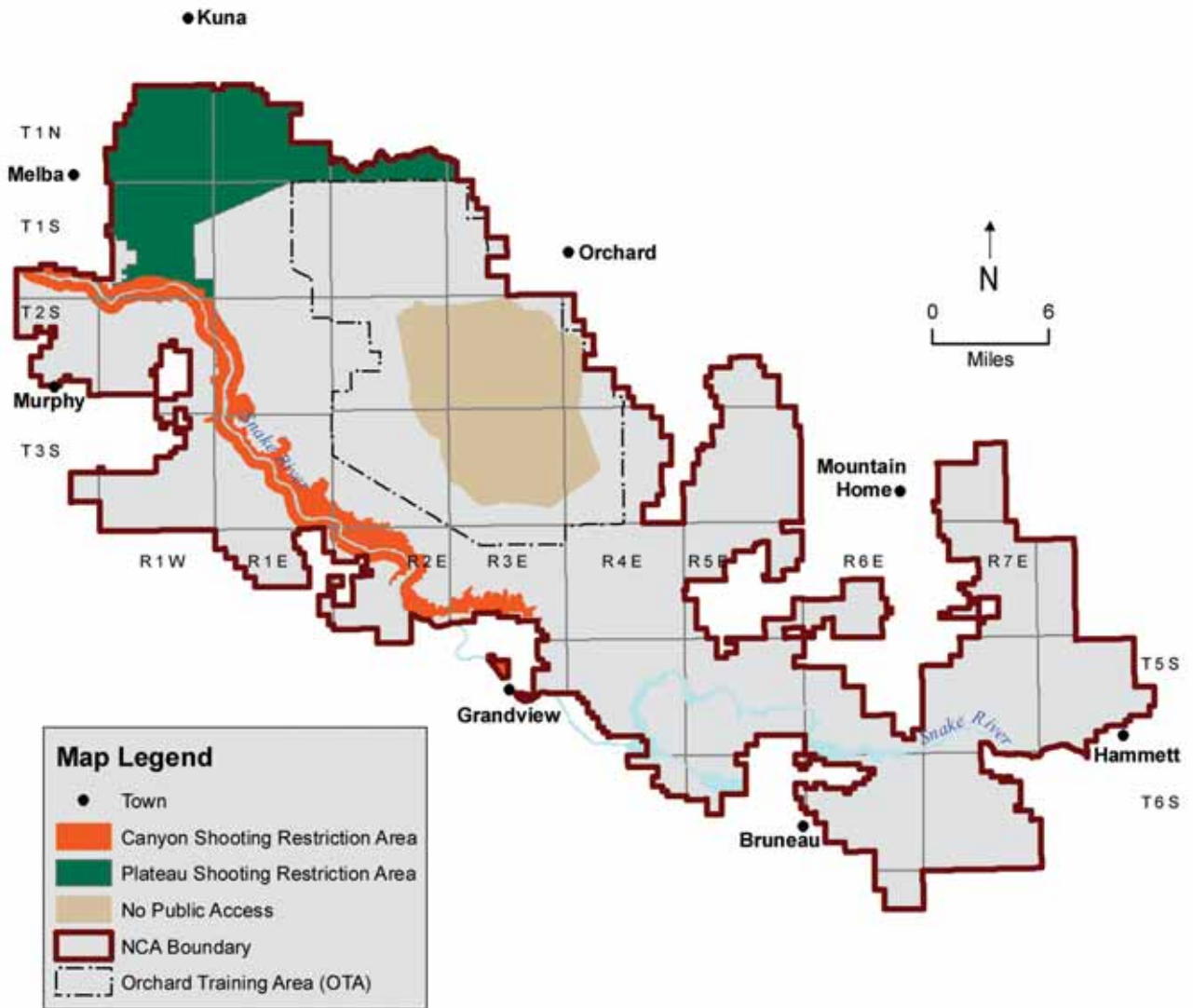


RECREATION MAPS

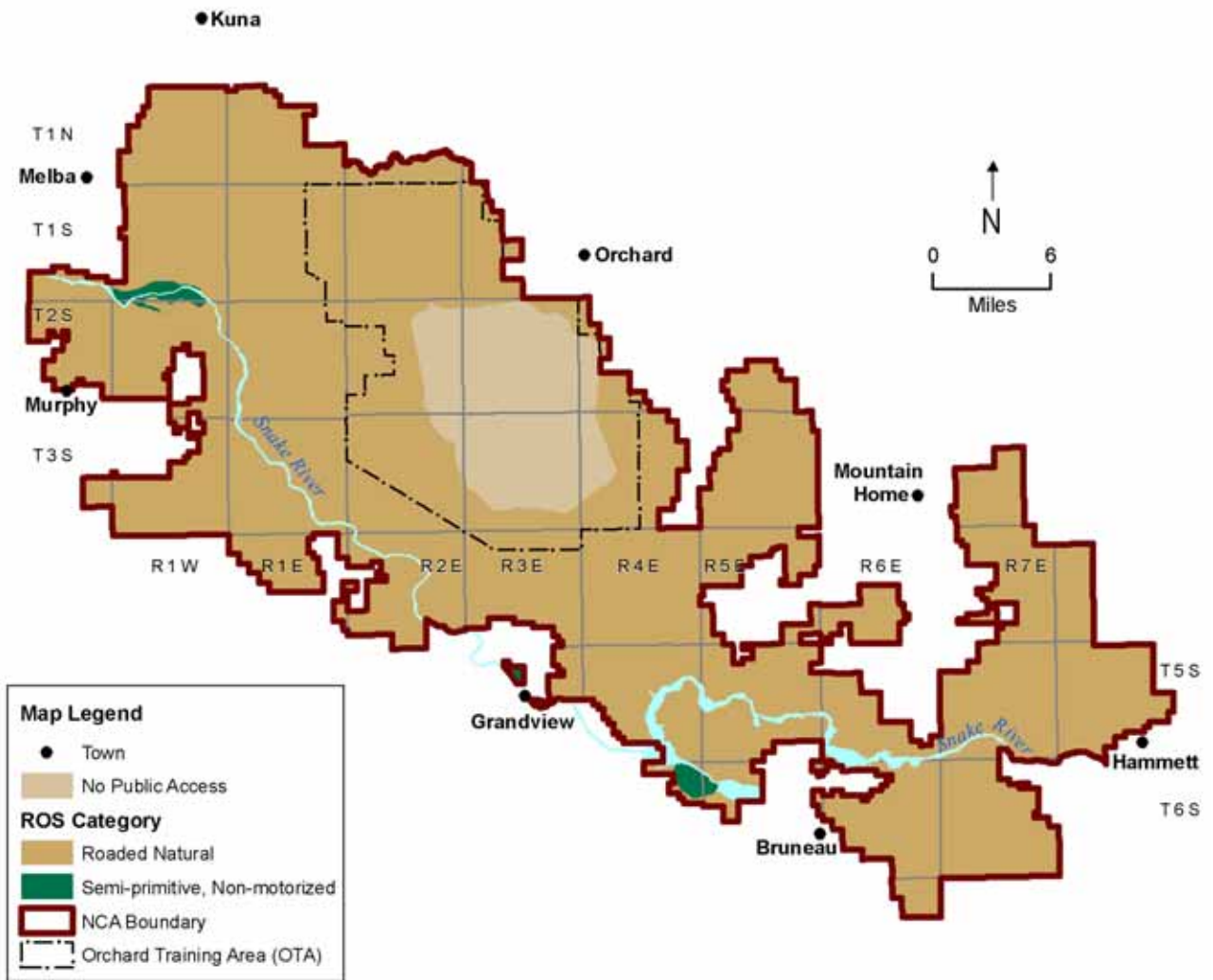
Recreation Map 1



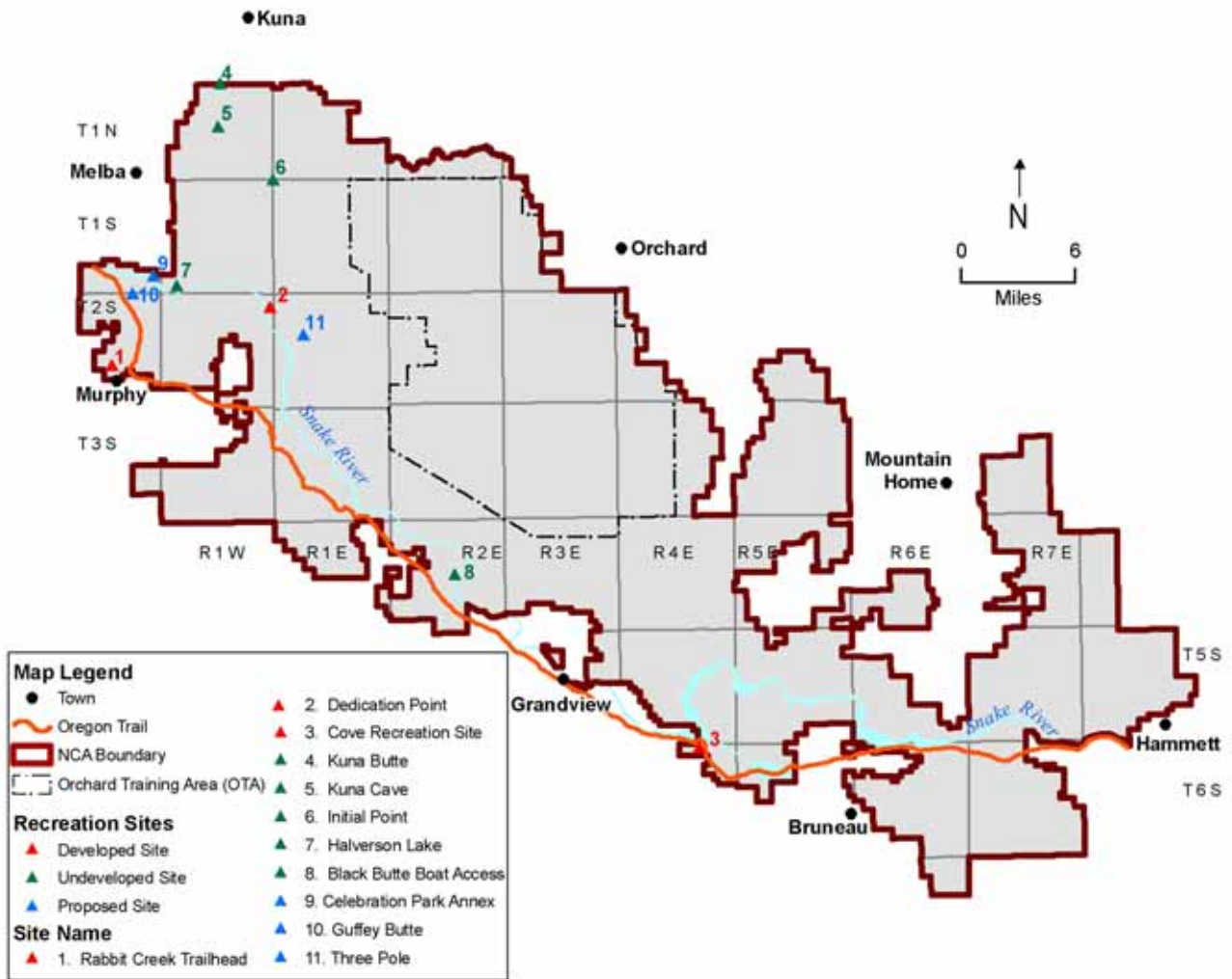
Recreation Map 2



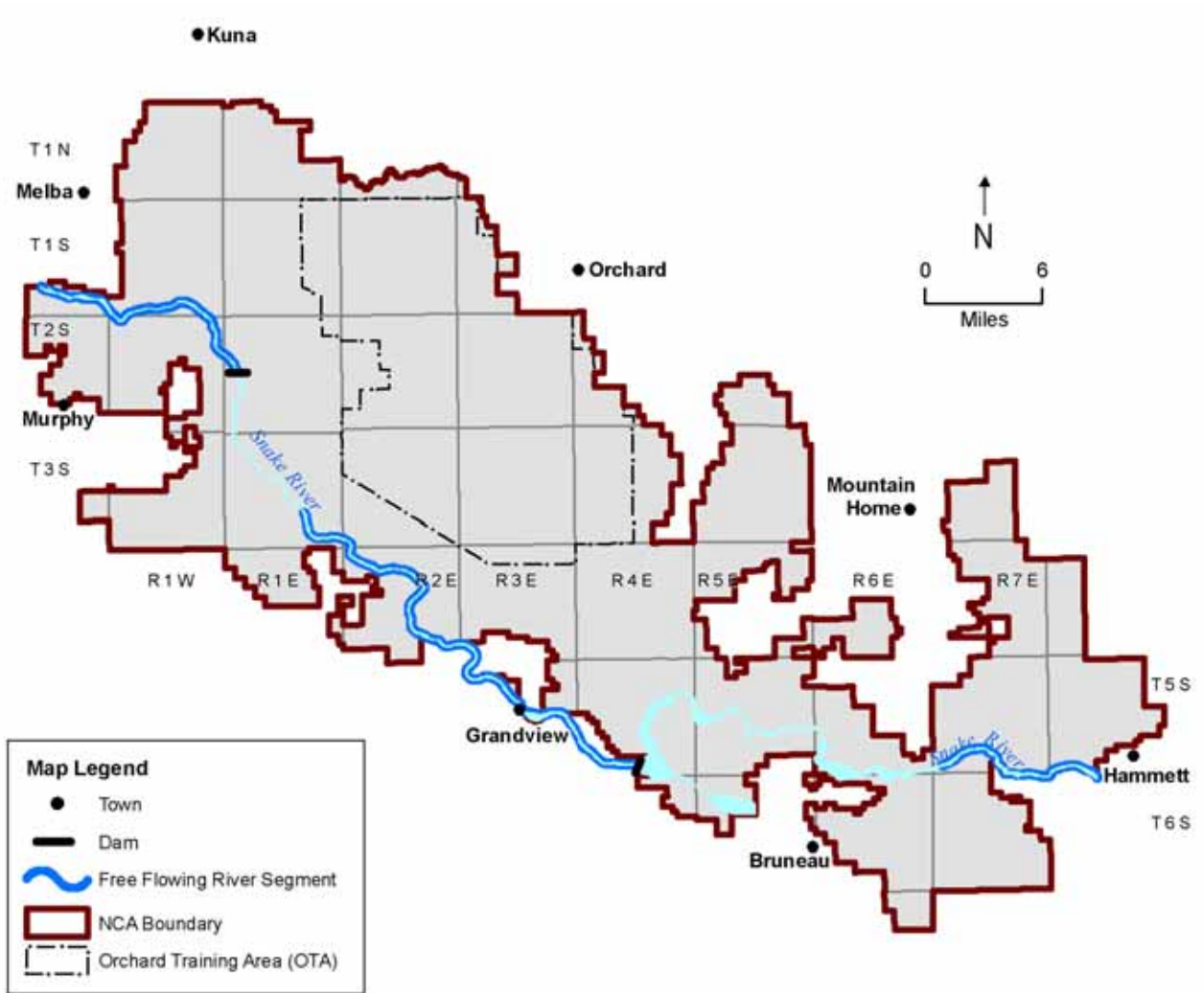
Recreation Map 3



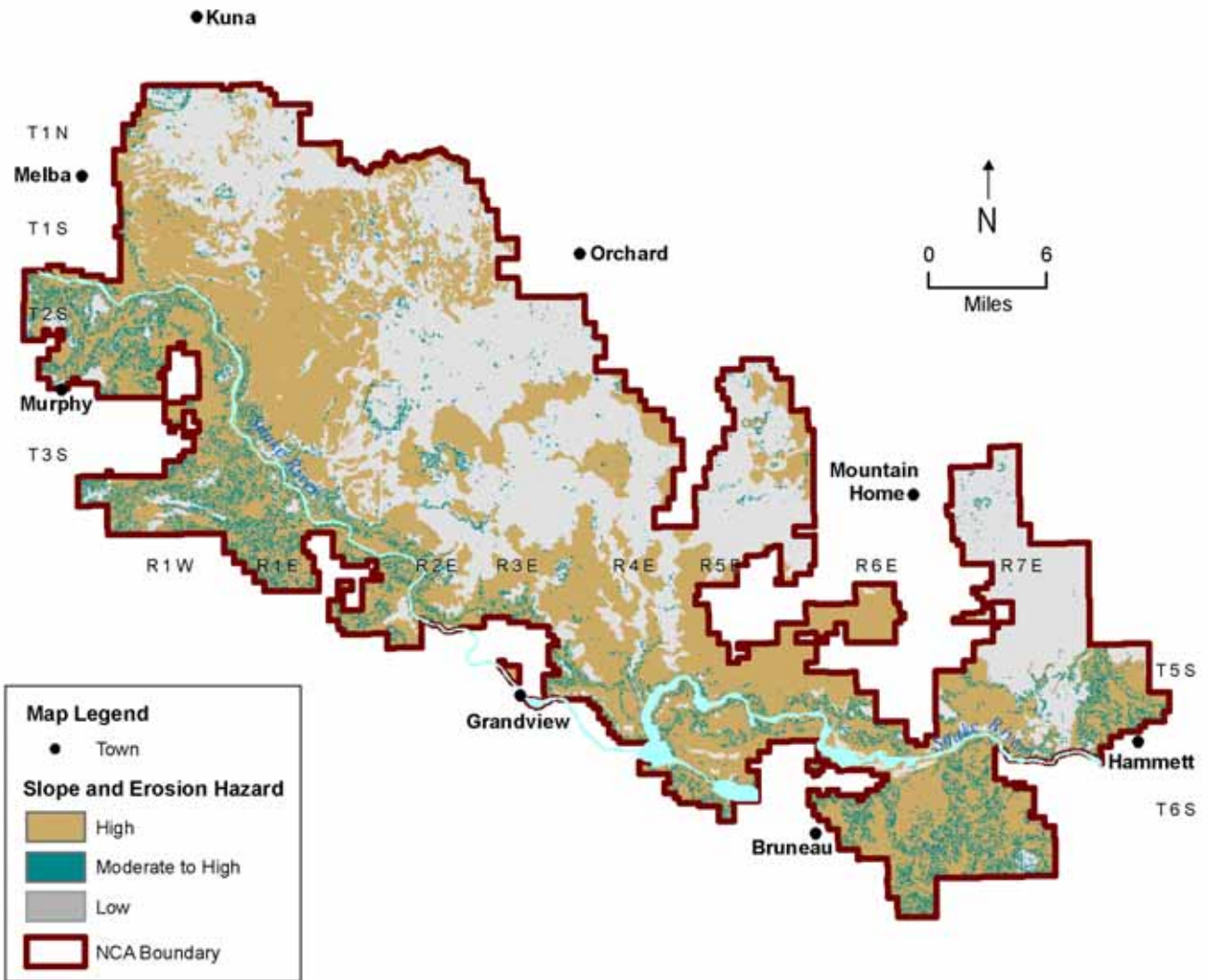
Recreation Map 4



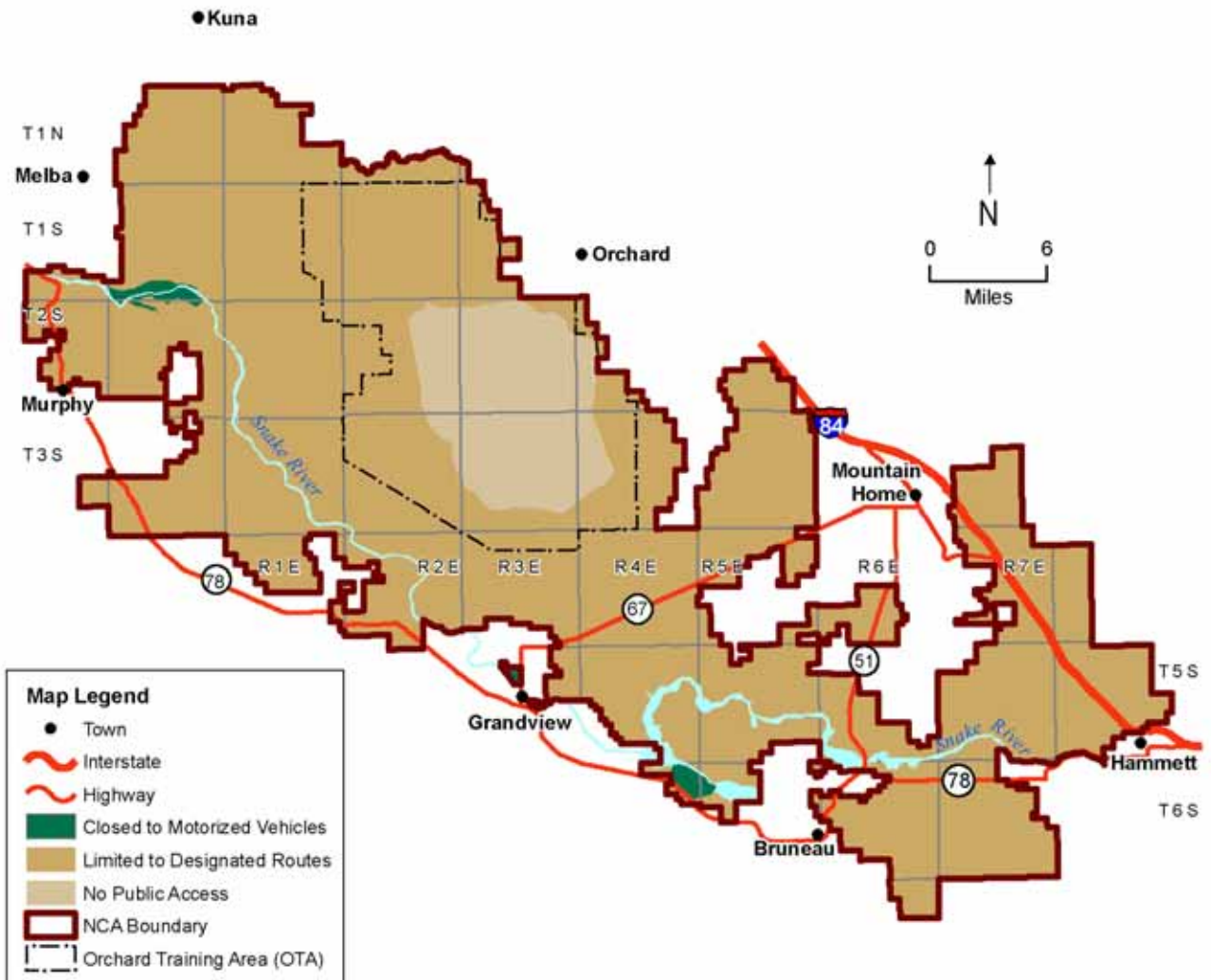
Recreation Map 5



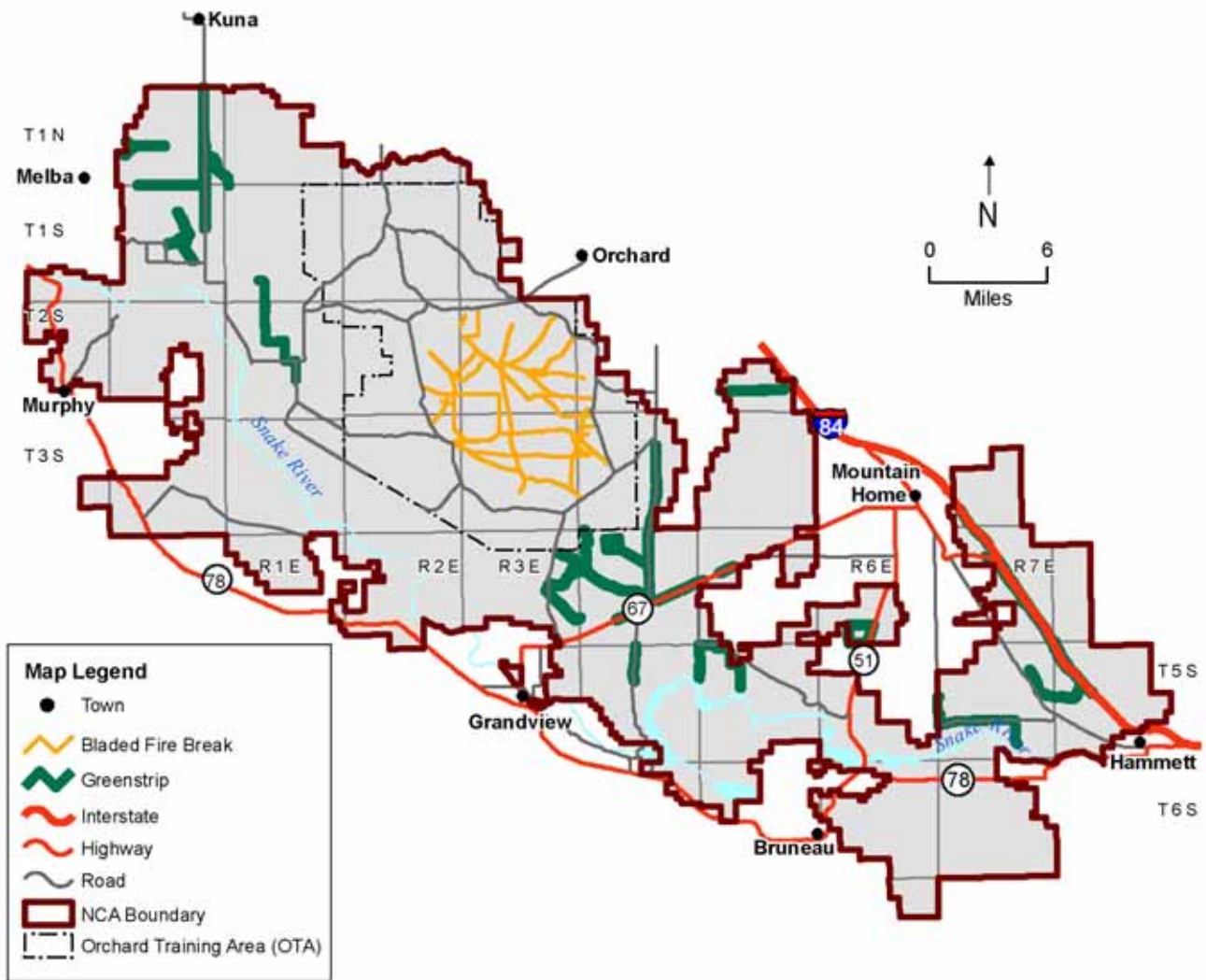
SOIL MAP



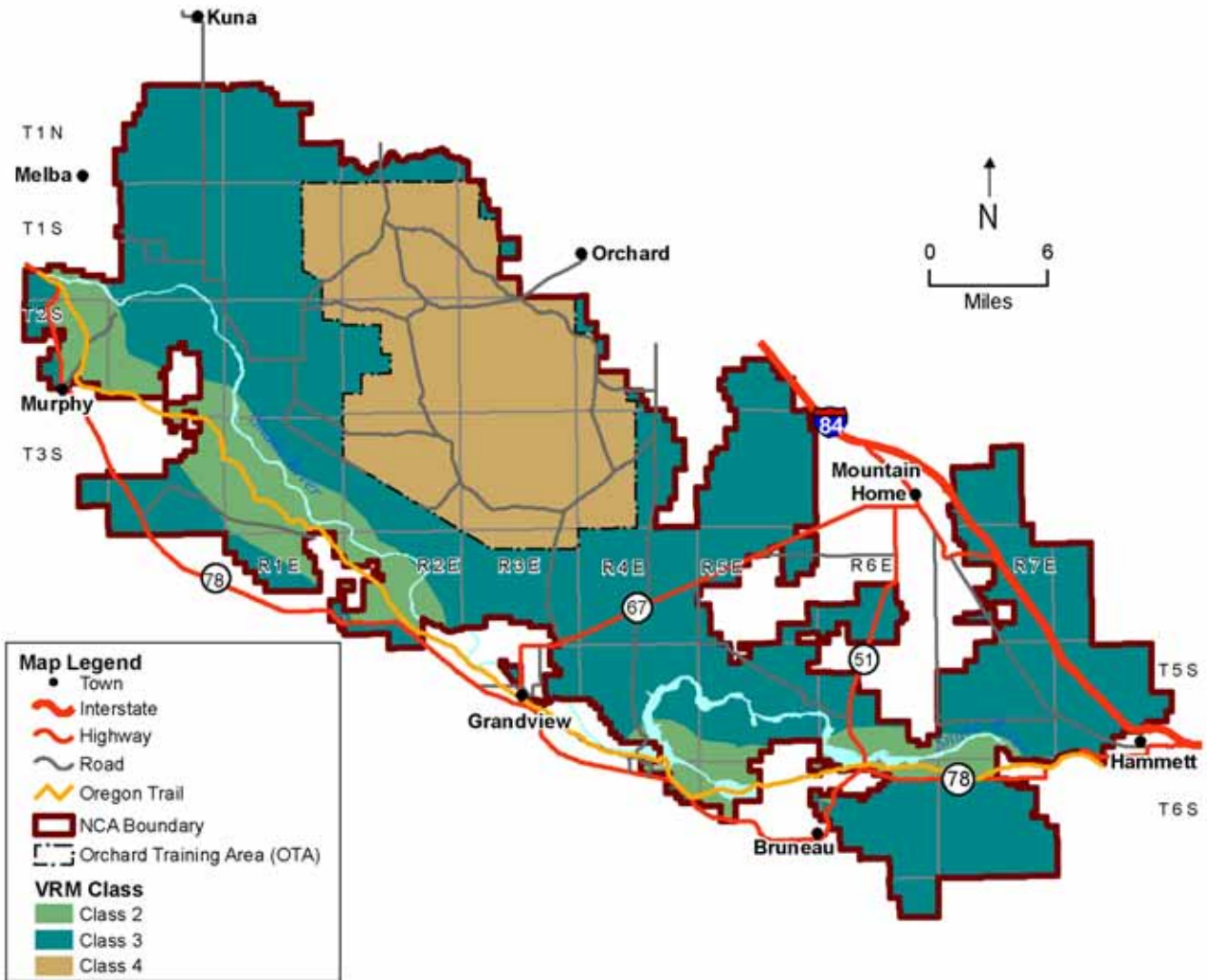
TRANSPORTATION MAP



VEGETATION MAP



VISUAL RESOURCE MANAGEMENT (VRM) MAP



WILDLIFE MAP

