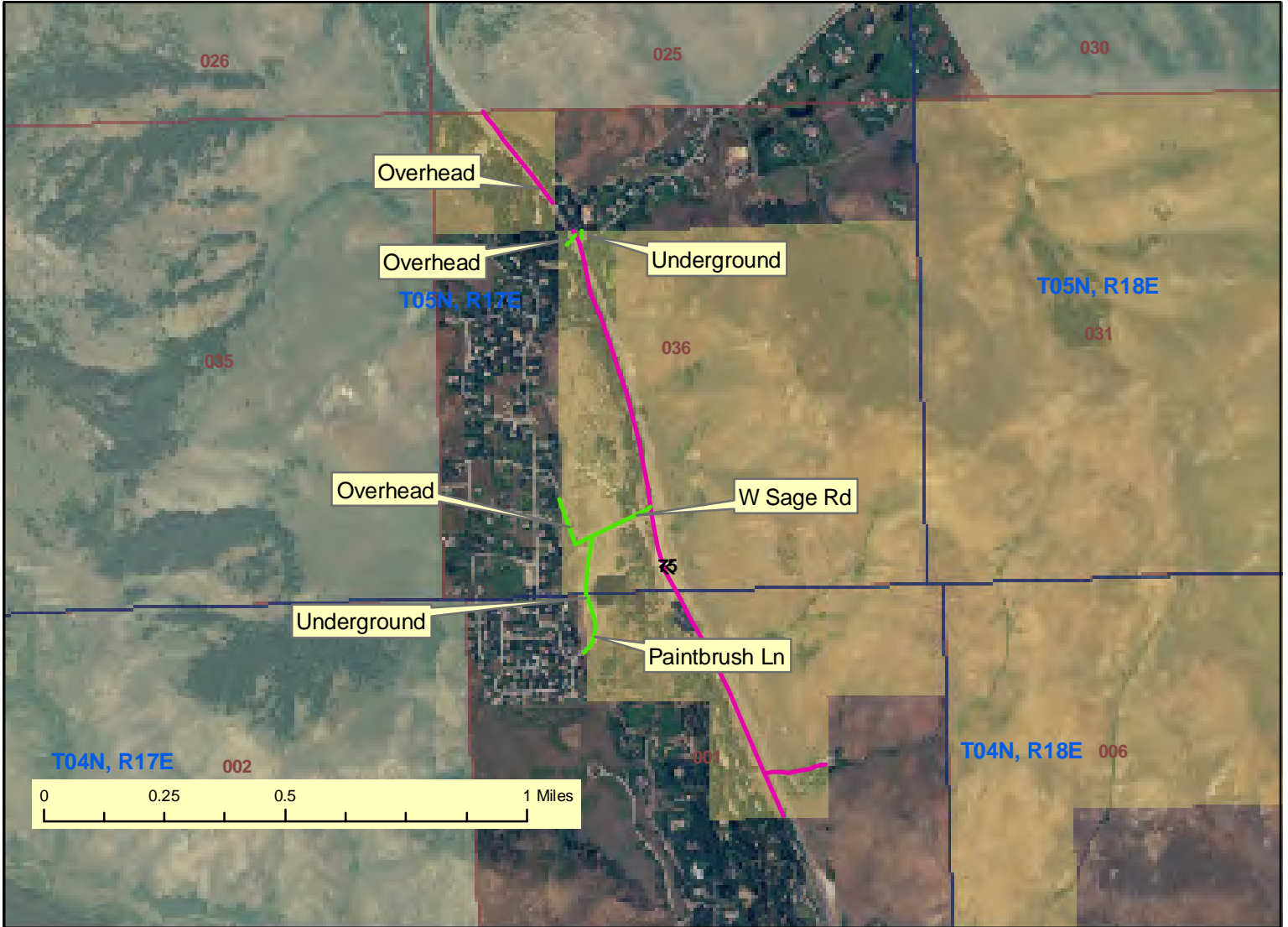


IDI-27046 Idaho Power N. Ketchum Right-of-Way Amendment

T. 4N, R. 17E, B.M. (portion of)
Sec. 1: NENW

T. 5N, R. 17E, B.M. (portion of)
Sec. 36: SENW, SENW, NWNW

th 4/20/09



- | | | | |
|--|---------------------------------|--|---------------------------------|
| | Bureau of Land Management | | Primary Road |
| | Bureau of Reclamation | | Light Duty Road |
| | Military, Department of Defense | | townrange polygon |
| | Bankhead-Jones Land Use | | Township, Range & Section Line |
| | Department of Energy | | IDI27046 Existing Power Lines |
| | National Grasslands | | IDI27046 Additional Power Lines |
| | Forest Service | | |
| | Fish and Wildlife Service | | |
| | National Park Service | | |
| | Native American Reservation | | |
| | Private | | |
| | State | | |
| | Water | | |

**U.S. Department of Interior
Bureau of Land Management
State of Idaho
Twin Falls District
Shoshone Field Office**

