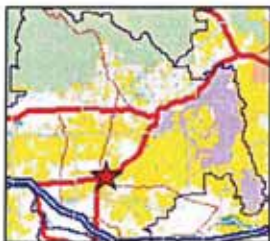
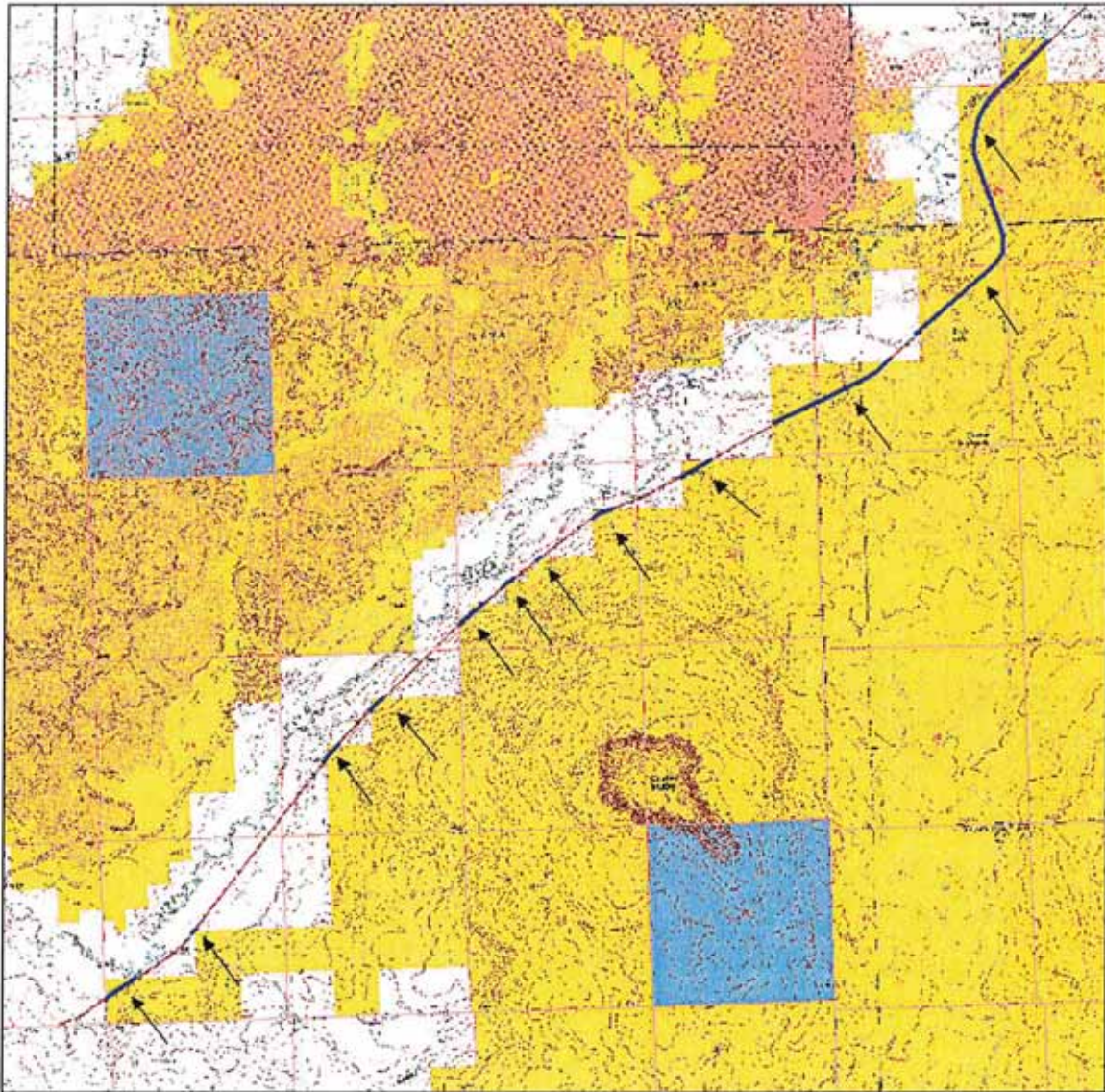


CenturyTel Buried Fiber Optic Cable Right-of-Way  
 IDI-36494

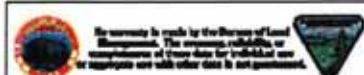


T. 5 S., R. 18 E.  
 Section 13: W2SE;  
 Section 23: SENE, NENENESW, NWSWNE, NWNWSW;  
 Section 24: NENW;  
 Section 27: SWNE, NESW;  
 Section 33: NWSE, SWSW;  
 T. 5 S., R. 19 E.  
 Section 5: SWSW;  
 Section 7: W2W2;  
 Section 8: N2NE, SWNE, N2SW.

**Legend**

- Bureau of Land Management
- Private
- STATE
- Buried Fiber Optic Cable

United States Department of the Interior  
 Bureau of Land Management  
 Tenth Floor, District Office  
 Cheyenne, Wyoming



Wednesday, May 27, 2009  
 R:\to\Land\GIS\Kover GIS\EZMaps\Kover