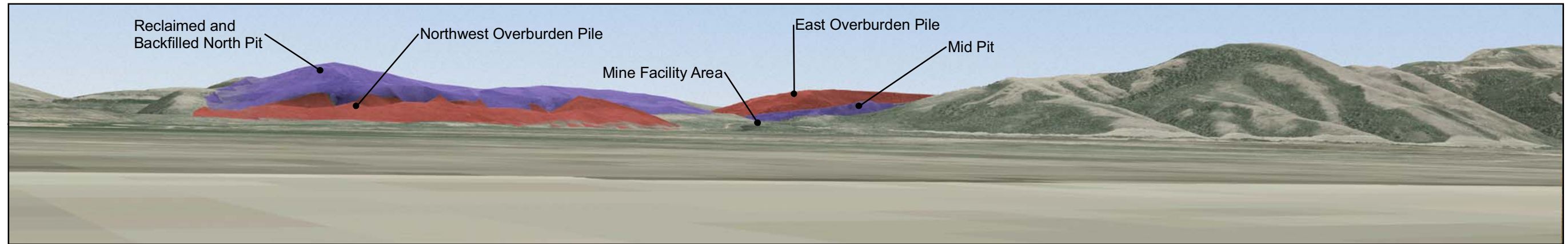




KOP 1: Existing Condition

KOP 1 is located at the junction of State Highway 34 and China Cap Road. The KOP faces southeast and provides a view of the northwest portion of the mine site.



Digital Terrain Model

This model is an interim step that uses GIS to place facilities in the landscape. The pits are shown as purple, and the overburden piles are shown as red. The model depicts the contours of the terrain in year 16, prior to reclamation for some of the mine site. The North Pit will be completely reclaimed prior to year 16.



KOP 1: Simulation

The North Pit and Northwest Overburden Pile are visible from the KOP. The north part of the Mid Pit and East Overburden Pile are also visible. Views of the South Pit are blocked by intervening terrain. The pits are shown in the simulation as a dark brown color. The overburden piles are shown as a light brown color.

BLACKFOOT BRIDGE PROJECT EIS

*FIGURE 3.9-2
Key Observation Point 1*

ANALYSIS AREA: Caribou County, Idaho	
Date: 6/29/2009	File: 1924\Simulation_KOP1.mxd
Prepared By: JG	Layout: Simulation_KOP1.pdf