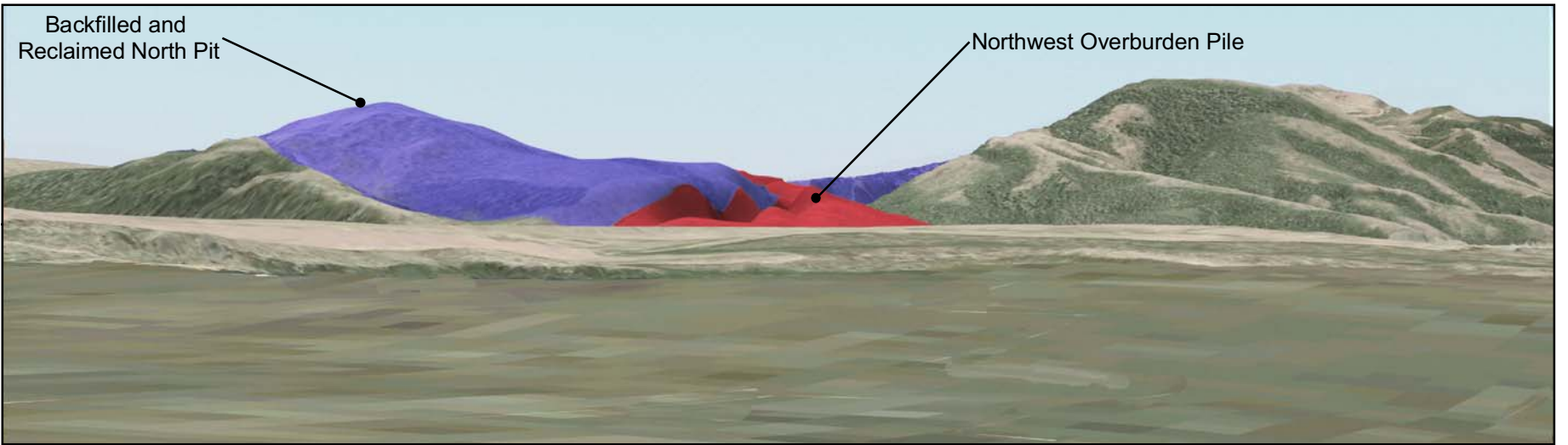




KOP 2: Existing Condition

KOP 2 is located east of Kermit Park on the Blackfoot River Road. The view faces south-southeast towards the mine site.



Digital Terrain Model

This model is an interim step that uses GIS to place facilities in the landscape. The pit is shown as purple, and the overburden pile is shown as red. The model depicts the contours of the terrain in year 16, prior to reclamation for some of the mine site. The North Pit will be completely reclaimed prior to year 17.



KOP 2: Simulation

The North Pit and adjacent Northwest Overburden Pile would be visible from the KOP. Views of the South Pit are blocked by intervening terrain. The pit is shown as a dark brown color, and the overburden pile is shown as a light brown color.

BLACKFOOT BRIDGE PROJECT EIS	
<p>FIGURE 3.9-3 Key Observation Point 2</p>	
ANALYSIS AREA: Caribou County, Idaho	
Date: 6/29/2009	File: 1924Simulation_KOP2.mxd
Prepared By: JG	Layout: Simulation_KOP2.pdf