

ATTACHMENT #1
RESOURCES AND SUPPLEMENTAL AUTHORITIES NOT ANALYZED

1. Air Quality -- Minor short term increase in dust during construction would not affect air quality.
2. Areas of Critical Environmental Concern – None in the area
3. Cultural Resources – No affect (see Exhibit “C”)
4. Environmental Justice – No affect on jobs or market prices
5. Prime or Unique Farm Lands – None in the area
6. Floodplains – Proposed action not in a floodplain
7. Invasive, Non-native Species – None found in T and E Plant survey by Jim Tharp (see Exhibit “D”)
8. Migratory Birds – No affect based on seasonal construction requirement (see Exhibits “B” and “E”) based on survey by Jesse Rawson.
9. Native American Religious Concerns – None known based on discussion with John Lytle, retired BLM Archeologist.
10. T and E/Sensitive Plants – No affect (see Exhibit “D”)
11. T and E/Sensitive Fish – No fish supporting water present
12. T and E/Sensitive Animals – No affect (see Exhibit “E”)
13. Wastes, Hazardous or Solid – None present or used in construction, operation or maintenance of the ROW (see SF 299 (item #19) in casefile IDI-35995 and Exhibit “B”, #'s 1 and 2)
14. Water Quality – No change in existing situation regarding quality
15. Wetlands & Riparian Zones – None present
16. Wilderness – None present
17. Wild & Scenic Rivers – None present
18. Tribal Treaty Rights – No affect on Sho-Ban treaty rights to hunt, fish and gather on vacant lands of the U.S.
19. Paleontological Resources – No known resources in the area and none found during field survey (see Exhibit “B”, #5 for protections)

20. Indian Trust Resources – No affect on status or potential uses of the subject public lands.
21. Availability of/Need to Reserve Access – No change in status of public land or access potential
22. Recreation Use – No change in status or potential
23. Existing & Potential Land Uses – No change in status or potential. Proposed ROW compatible with other potential uses.
24. Fisheries – See #11 above
25. Forest Resources – None present
26. Wild Horse & Burro; Designated Herd Management Areas – None present
27. Visual Resources – The area is VRM Class IV which allows for changes in the landscape commensurate with the proposed project. All facilities associated with the proposed ROW are underground
28. Economic & Social Values – No change in the existing situation
29. Mineral Resources – None known. Mineral ownership would not change.

EXHIBIT "A-1" SITE MAP



**EXHIBIT "A-2"
PROJECT MAPS**

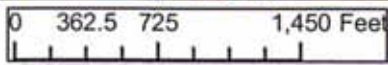
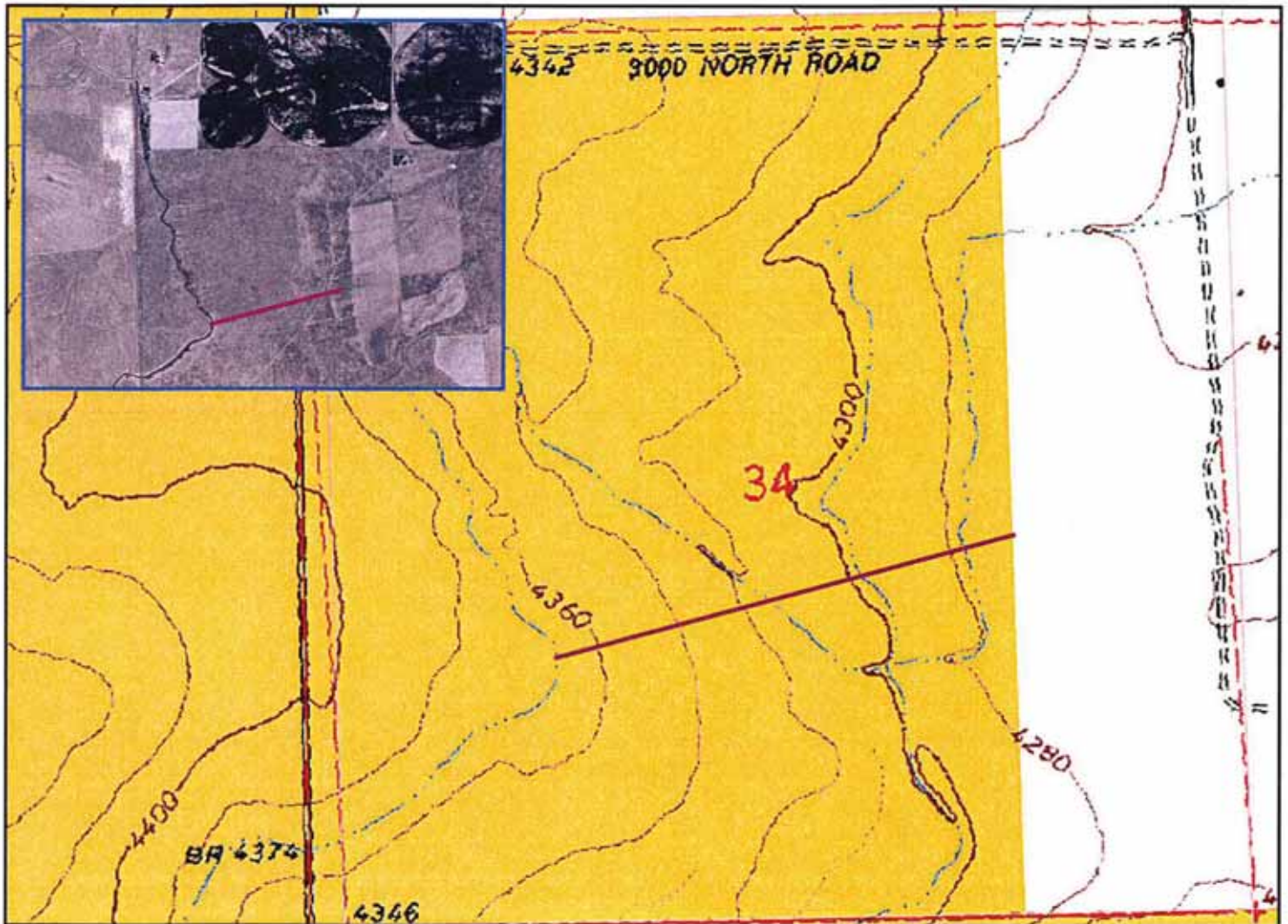
IDI-35995

Jeff Williams - Buried Water Pipeline

T. 11 S., R. 17 E.

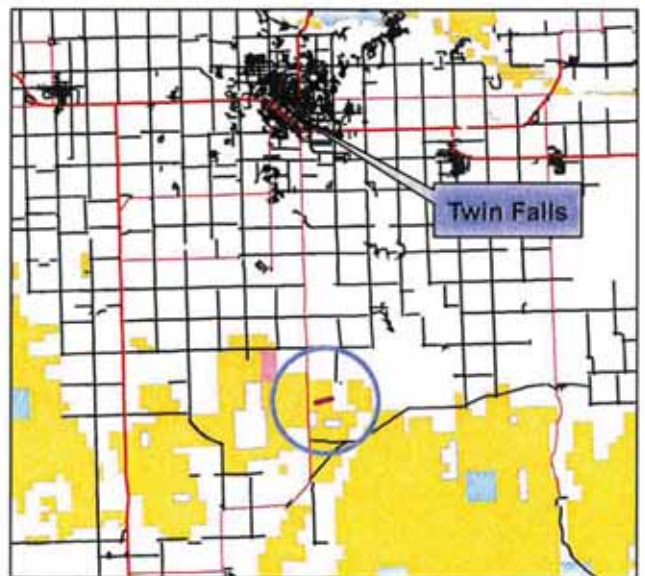
Section 34

Boise Meridian, Twin Falls County, Idaho



1 inch equals 937.567618 feet

- Bureau of Land Management
- National Park Service
- Private
- State
- Primary Road
- Light Duty Road



0.05714 Miles
Inch

**U.S. Department of Interior
Bureau of Land Management
State of Idaho
Twin Falls District
Shoshone Field Office**

