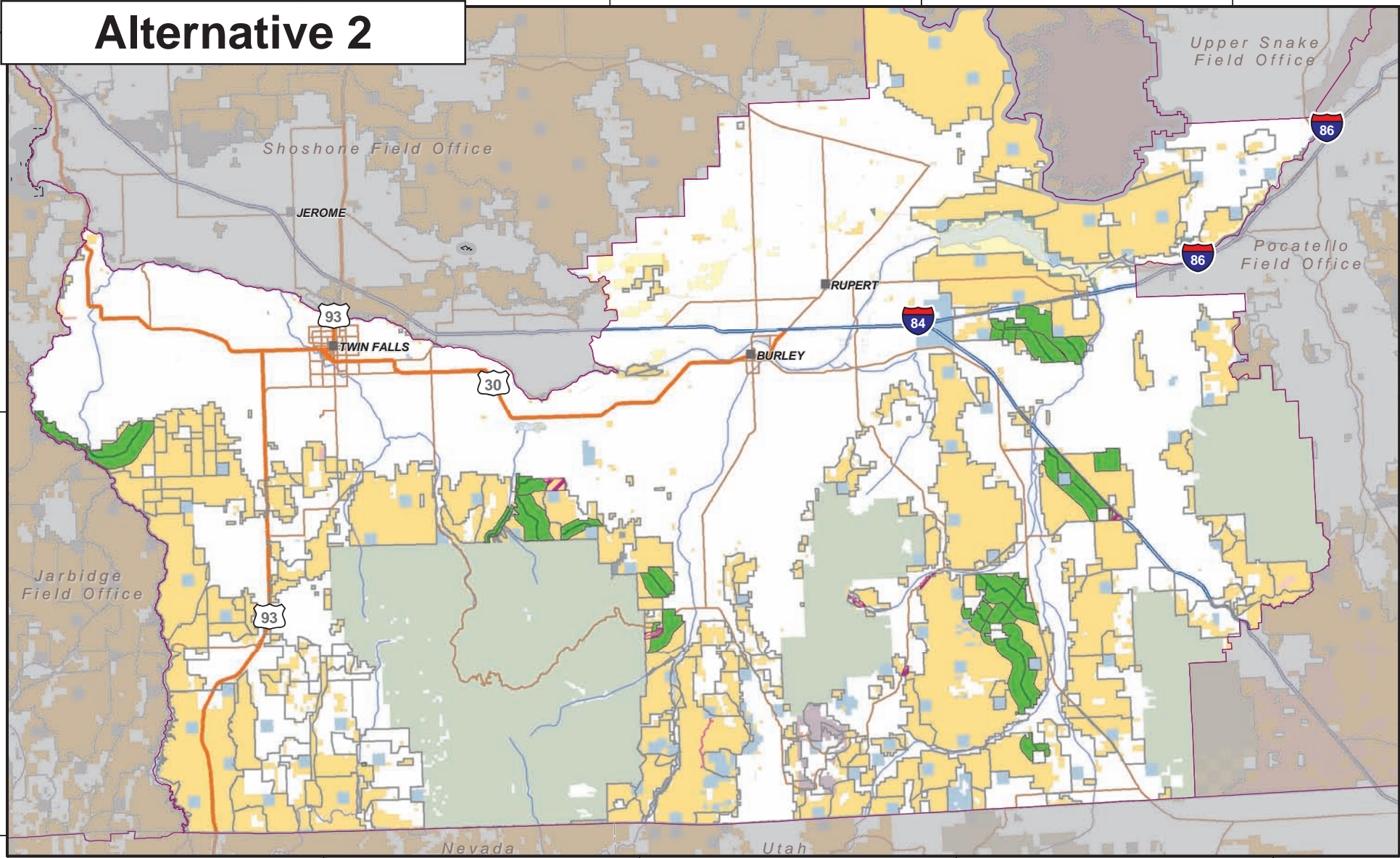


Alternative 2



US Dept. of the Interior
Bureau of Land Management
Twin Falls District, Idaho

Legend

- | | | | | |
|------------------------------|-------------------|-------------------|---------------------------------|-----------------------------|
| Animal Trailing Route | Range Allotment | Towns/Communities | Bureau of Land Management | Fish and Wildlife Service |
| Proposed Action | BLM Offices | Interstate | Bureau of Reclamation | National Park Service |
| Alternative 2 | Outside Burley FO | Highway | Military, Department of Defense | Native American Reservation |
| Animal Trailing Area | National Monument | Major Road | Bankhead-Jones Land Use | Private; other |
| Proposed Action | State Boundary | Lake | Department of Energy | State |
| Alternative 2 | | Stream | National Grasslands | State Fish and Game |
| | | | Forest Service | |



No warranty is made by the Bureau of Land Management. The accuracy, reliability, or completeness of these data for individual use or aggregate use with other data is not guaranteed.

