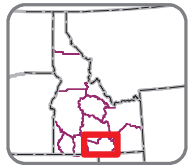
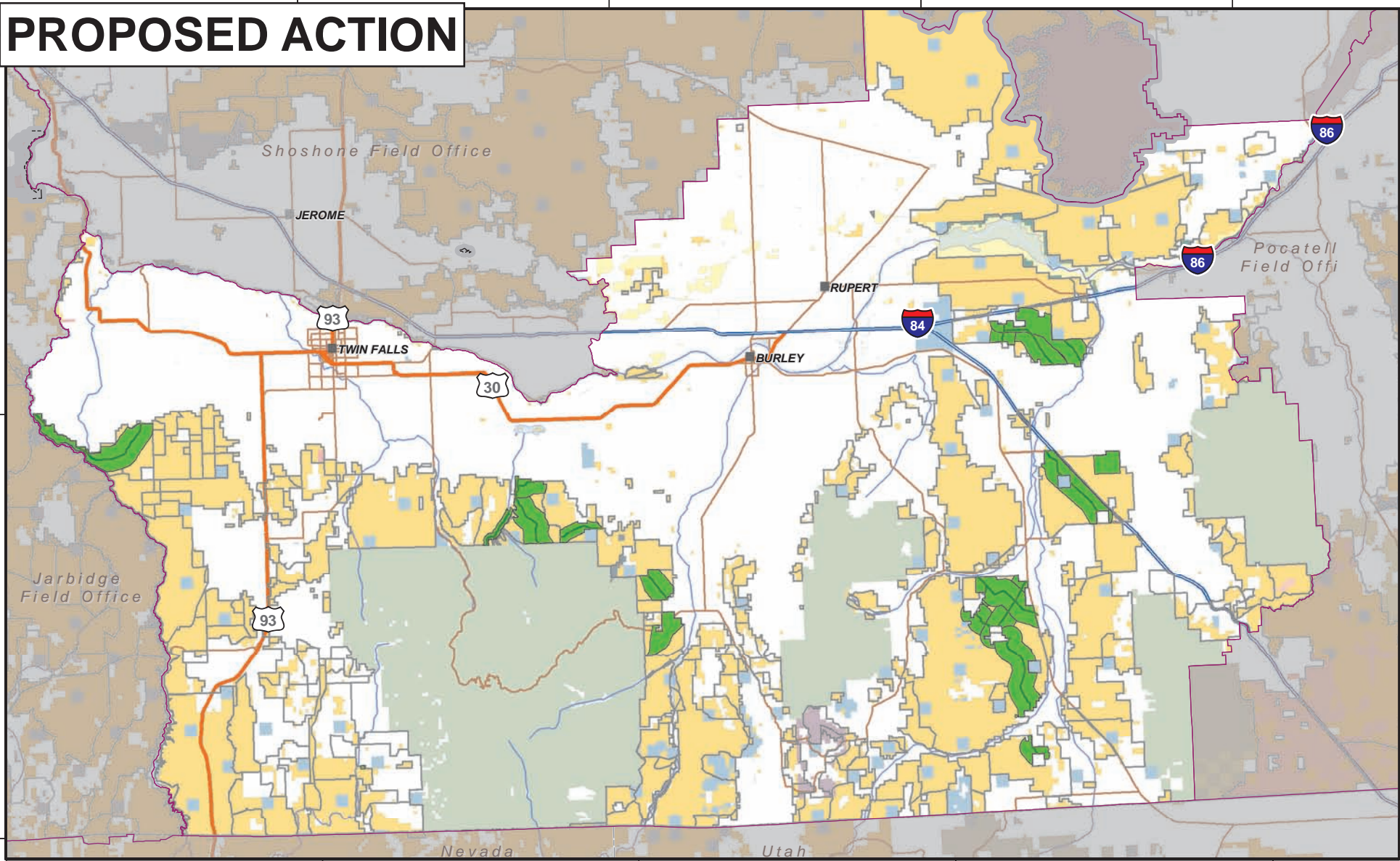


# PROPOSED ACTION



US Dept. of the Interior  
Bureau of Land Management  
Twin Falls District, Idaho

## Legend

- |                              |                   |                   |                                 |                             |
|------------------------------|-------------------|-------------------|---------------------------------|-----------------------------|
| <b>Animal Trailing Route</b> | Range Allotment   | Towns/Communities | Bureau of Land Management       | Fish and Wildlife Service   |
| Proposed Action              | BLM Offices       | Interstate        | Bureau of Reclamation           | National Park Service       |
| <b>Animal Trailing Area</b>  | Outside Burley FO | Highway           | Military, Department of Defense | Native American Reservation |
| Proposed Action              | National Monument | Major Road        | Bankhead-Jones Land Use         | Private; other              |
|                              | State Boundary    | Lake              | Department of Energy            | State                       |
|                              |                   | Stream            | National Grasslands             | State Fish and Game         |
|                              |                   |                   | Forest Service                  |                             |



No warranty is made by the Bureau of Land Management. The accuracy, reliability, or completeness of these data for individual use or aggregate use with other data is not guaranteed.