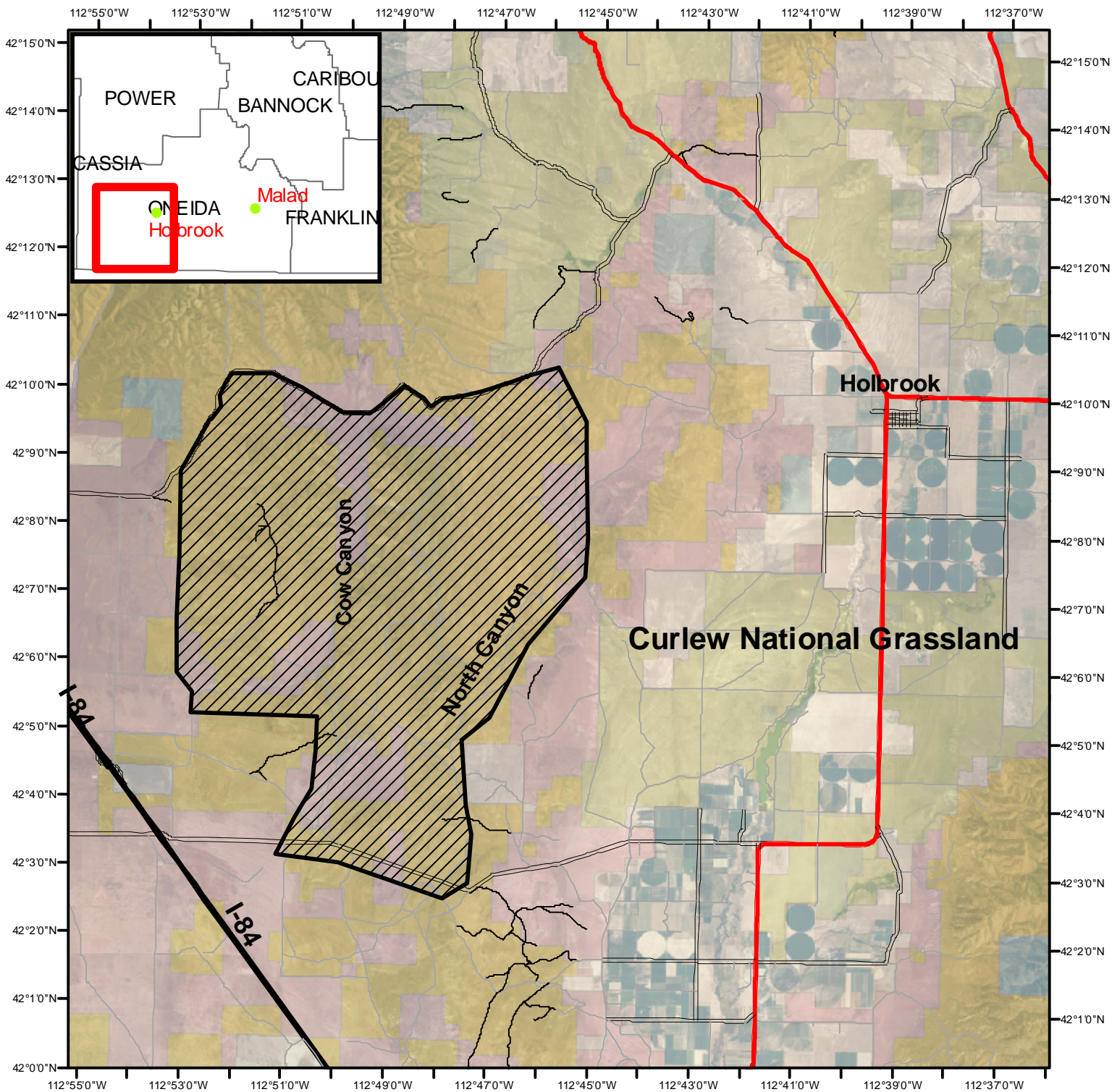


2010 Stone Firewood/Post Location (Juniper)



Legend

- Bureau of Land Management
- LW_DOI
- USDA Land Use Lands
- Private
- State of Idaho
- US Forest Service
- Firewood cutting Area

0 1 2 4 Miles



Notice: This area has BLM & Private land scattered throughout. Cutting is authorized on BLM lands ONLY. You must have a valid permit.

Permittee is responsible for ensuring they are on BLM designated land.

BLM Land Status Maps containing more specific ownership are available at the Pocatello and Malad BLM Offices. Cost \$4.00



BLM LAND STATUS MAPS CONTAINING MORE SPECIFIC OWNERSHIP ARE AVAILABLE AT THE POCATELLO AND MALAD BLM OFFICES. COST \$4.00

