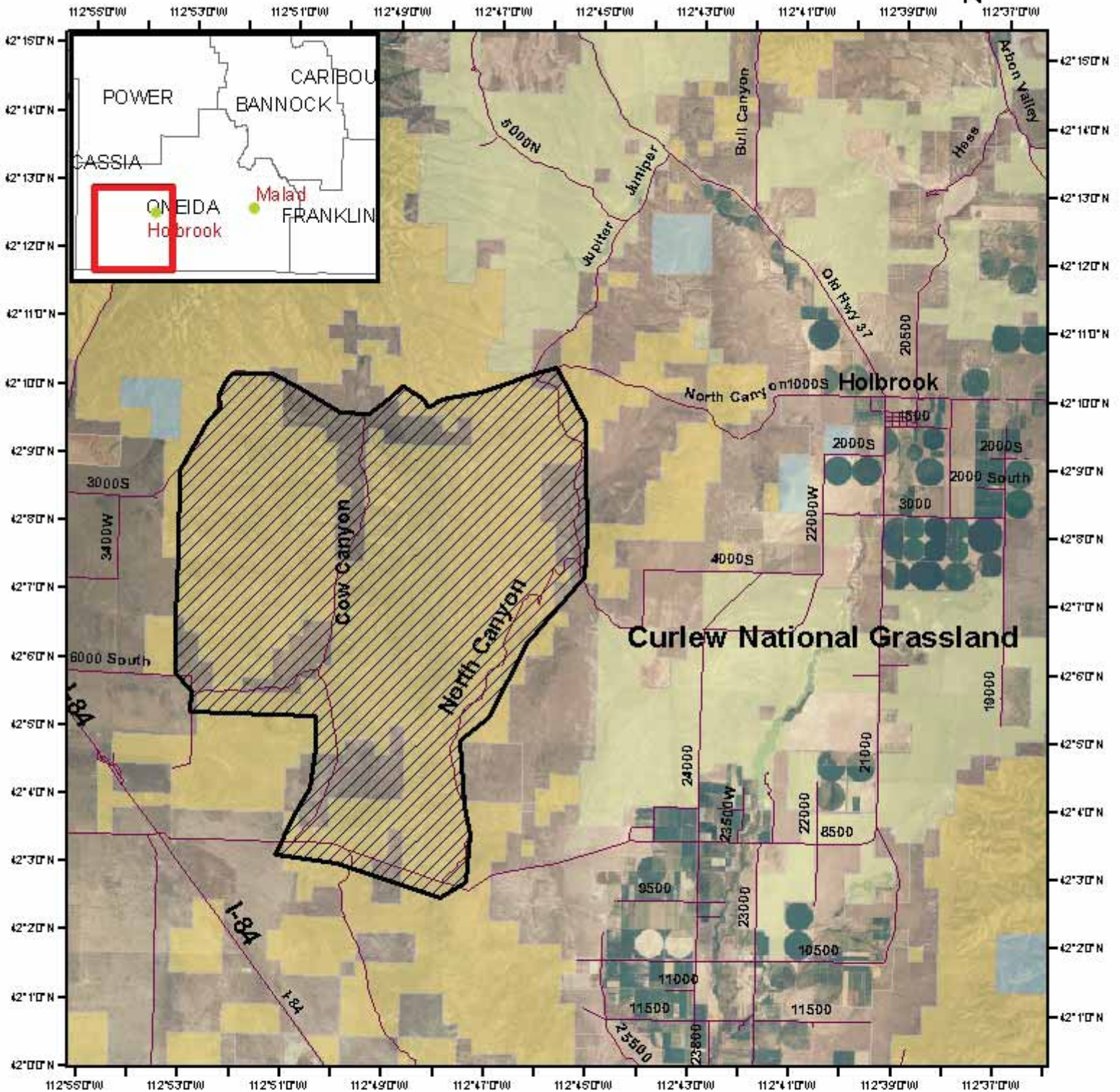


2009 Stone Firewood/Post Location (Juniper)



Notice: This area has BLM & Private land scattered throughout. Cutting is authorized on BLM lands ONLY. You must have a valid permit.

Permittee is responsible for ensuring they are on BLM designated land.

Legend

- Roads
- Bureau of Land Management
- USDA Land Use Lands
- Private
- State of Idaho
- Firewood cutting Area



Accuracy is made by the Bureau of Land Management Bureau of the data in preparation intended by BLM.



BLM Land Status Maps containing more specific ownership are available at the Pocatello and Malad BLM Offices. Cost \$4.00