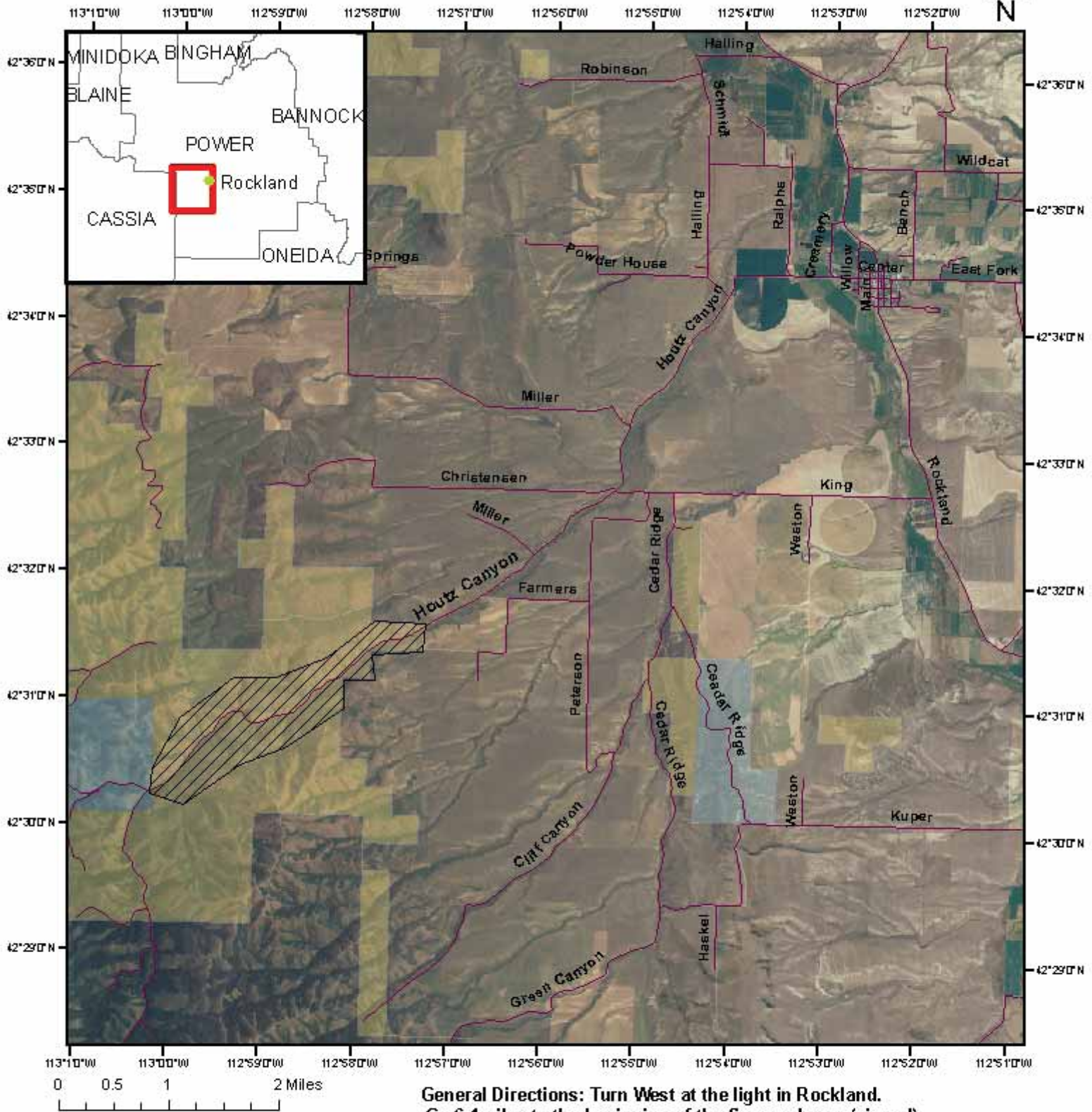


2009 Houtz Caynon Firewood/Post Location (Juniper)



**General Directions: Turn West at the light in Rockland.
 Go 6.1 miles to the beginning of the firewood area (signed).
 Firewood cutting area is 3.1 miles long.
 The firewood area ends at the state land line and is signed.
 There is a spot for a turn around here.**

- Legend**
- Roads
 - Bureau of Land Management
 - USDA Land Use Lands
 - Private
 - State of Idaho
 - ▨ Firewood cutting Area



Ownership is made by the Bureau of Land Management Bureau of the State in partnership intended by BLM.



Permittee is responsible for ensuring they are on BLM designated land.
 BLM Land Status Maps containing more specific ownership are available at the Pocatello and Malad BLM Offices.
 Cost \$4.00