

Fire: Red Bridge # DM93 Supplemental

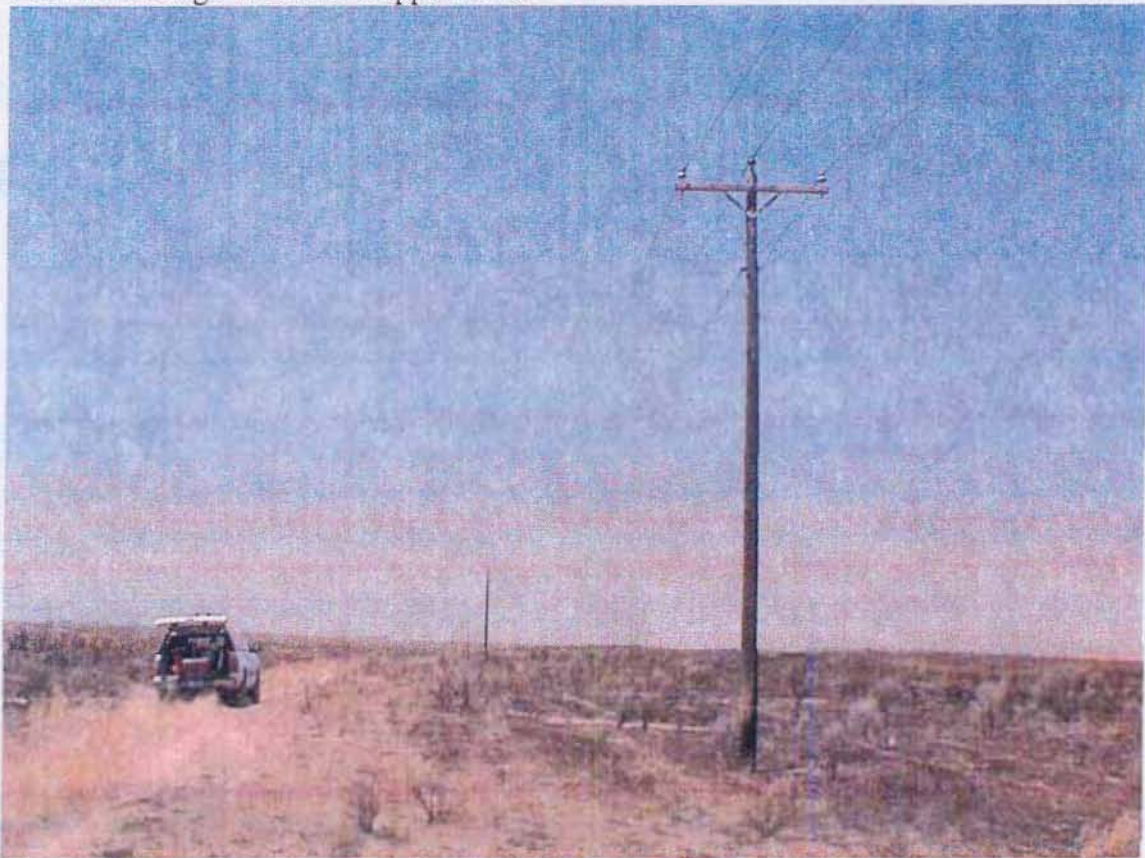


Photo # 1 Span over origin area, facing west 7-20-2007

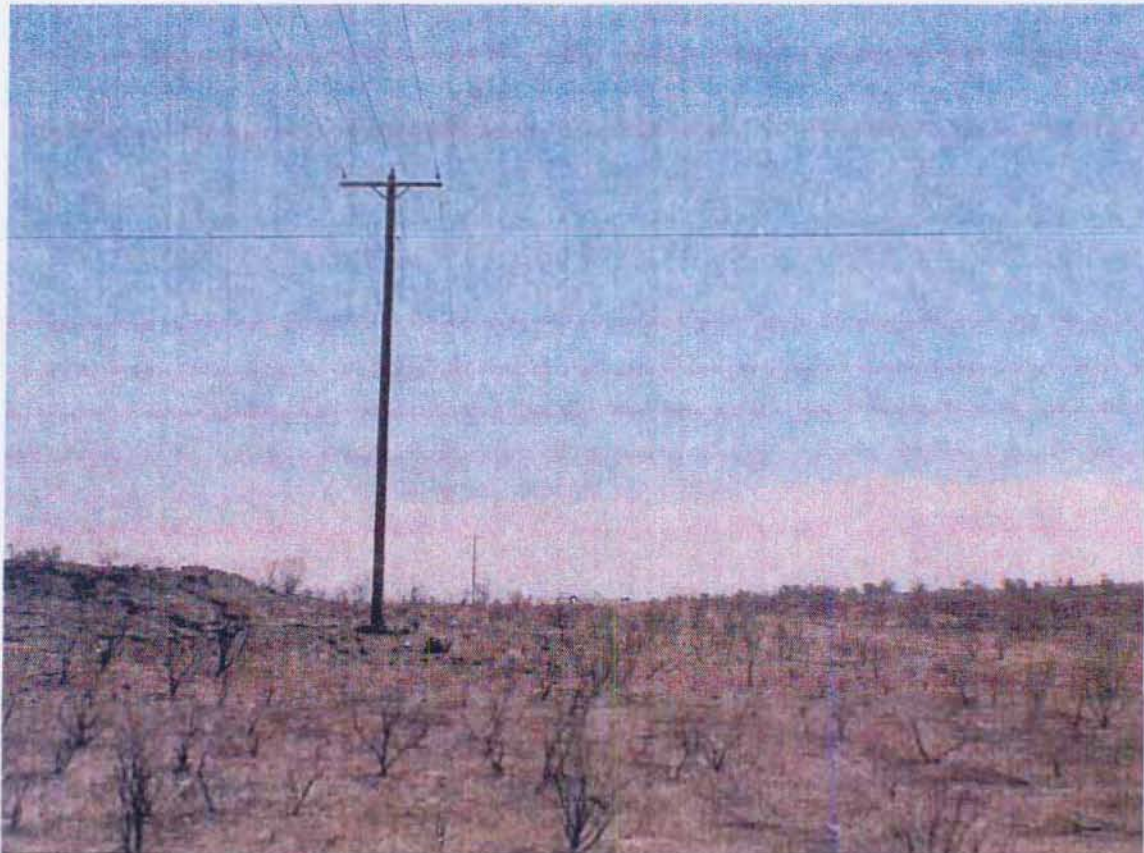


Photo # 2 Same span in photo # 1, facing east

Fire: Red Bridge # DM93 Supplemental



Photo # 3 East end of the span over the origin, facing east – note dark line upper left



Photo # 4 Similar to photo # 3, with the origin on the ground visible as well

Fire: Red Bridge # DM93 Supplemental



Photo # 5 West end of the span over the origin, facing west

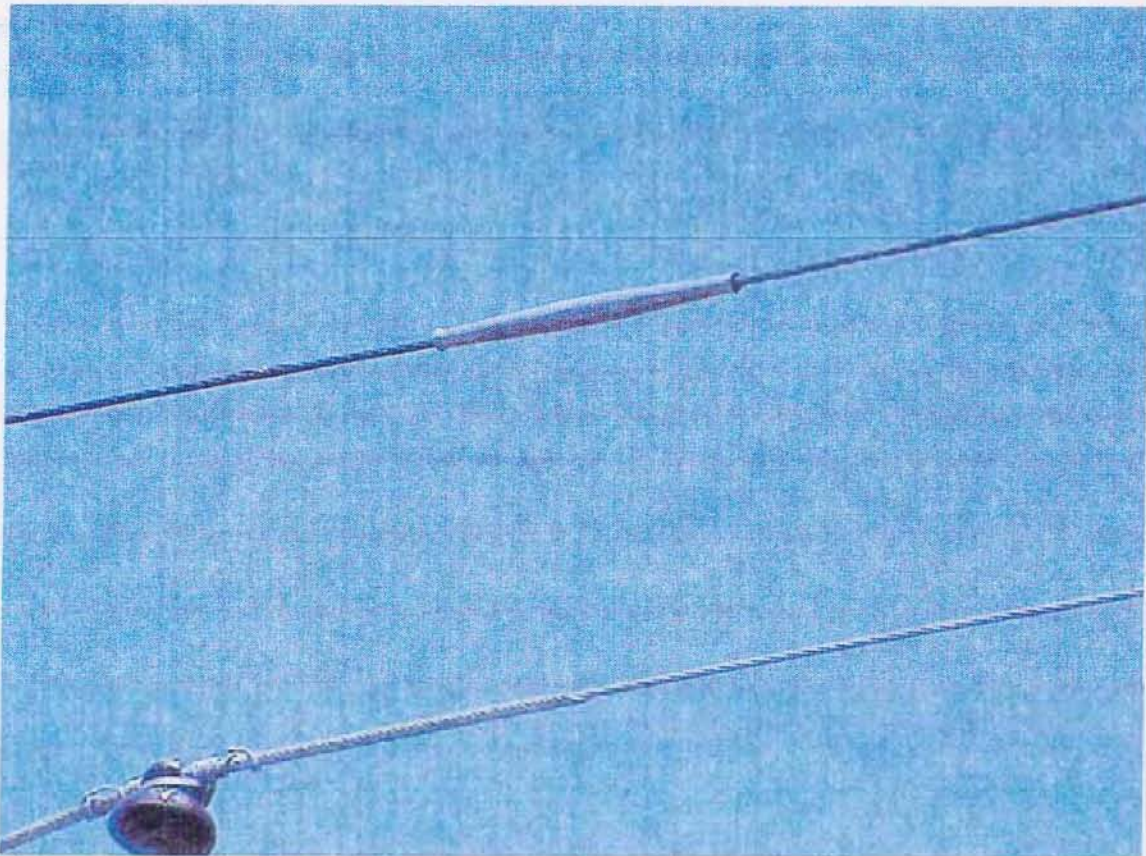


Photo # 6 Splice at west end of the span over the origin, note bubble and dark line left

Fire: Red Bridge # DM93 Supplemental

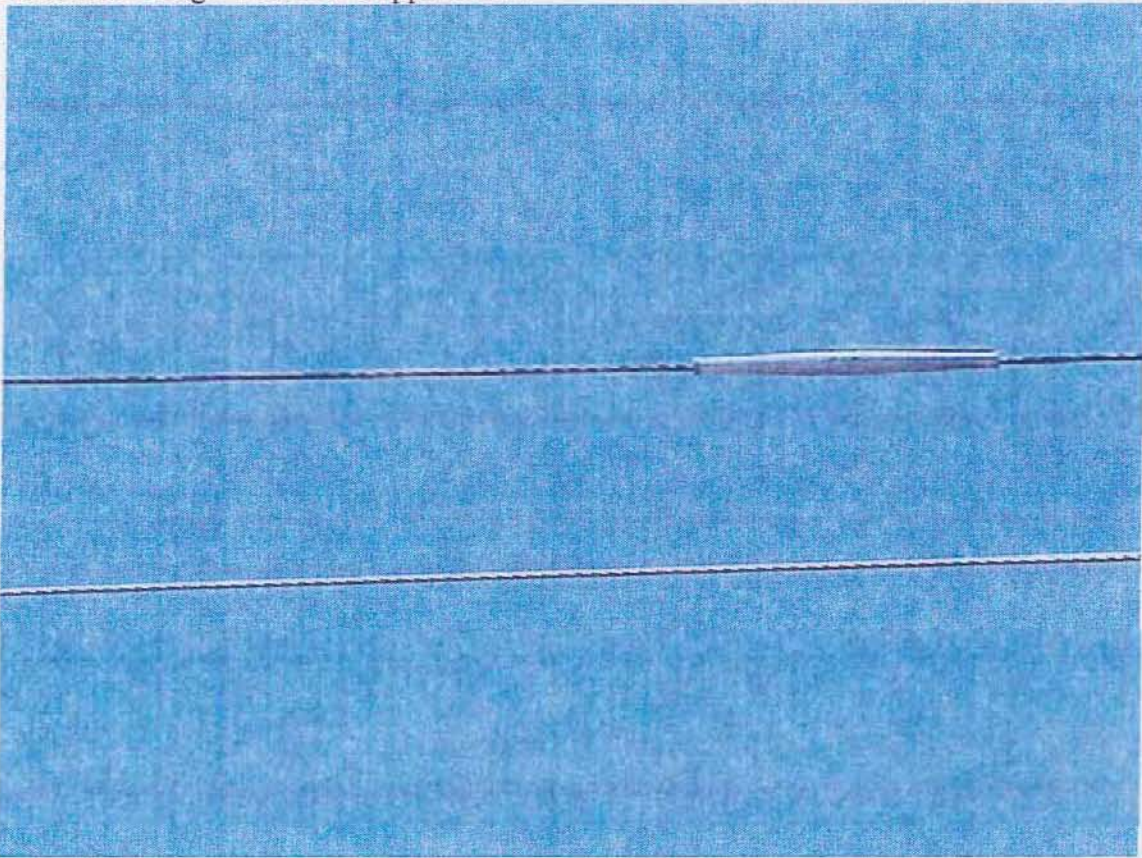


Photo # 7 Next splice to the east of photo # 6, facing north

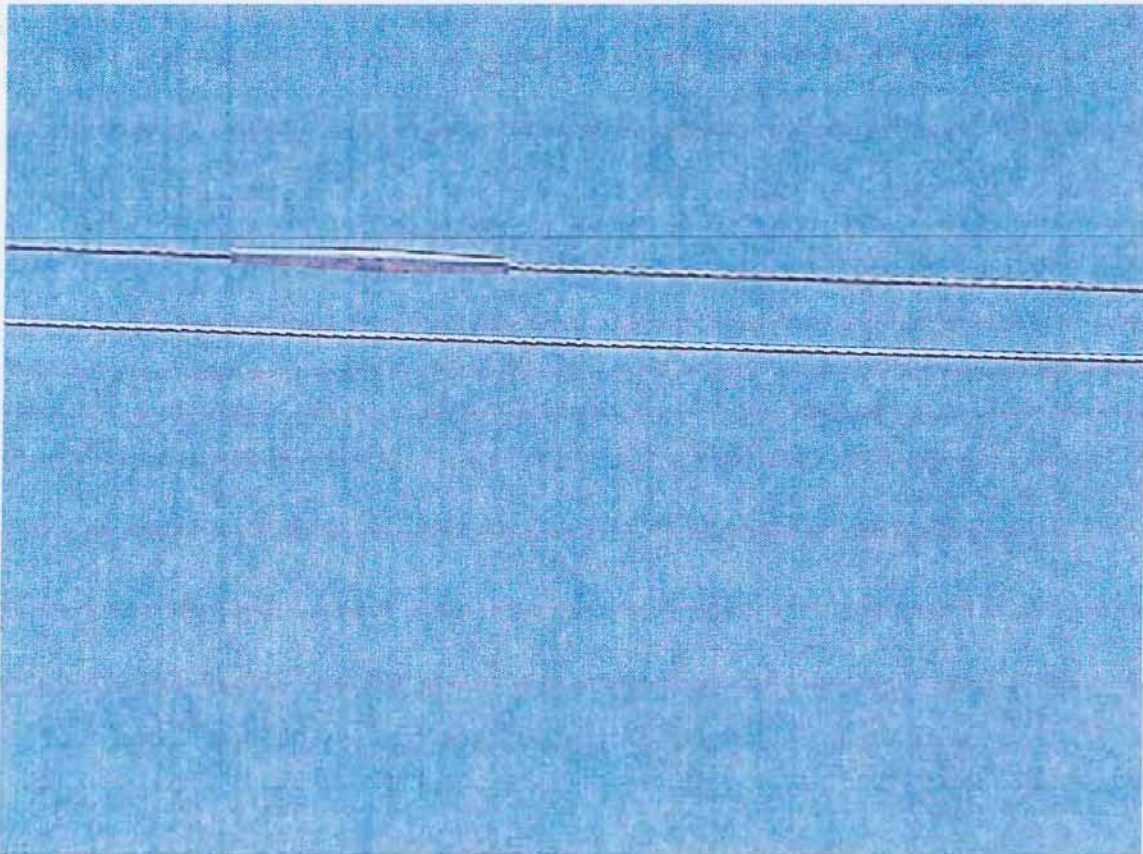


Photo # 8 Next splice to the east of photo # 7 – note color variation of conductor

Fire: Red Bridge # DM93 Supplemental

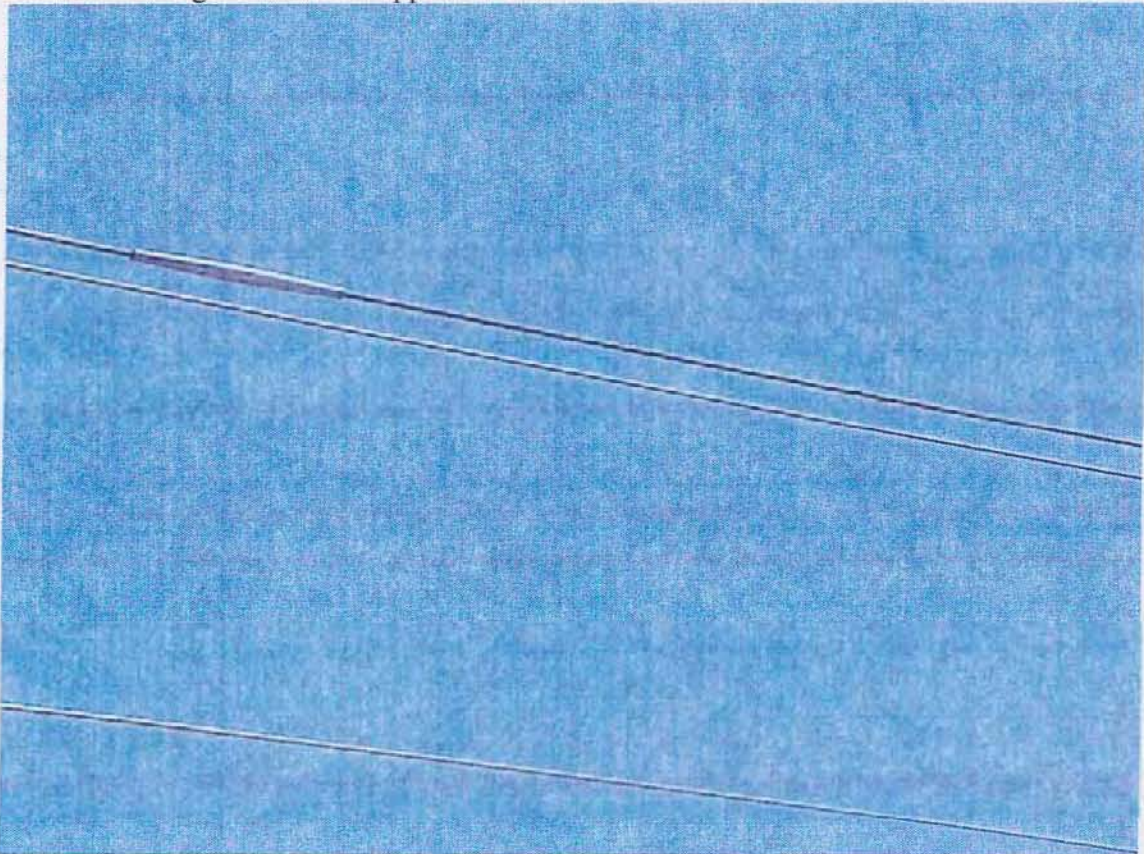


Photo # 9 Next splice east of photo # 8 – note bubble at right

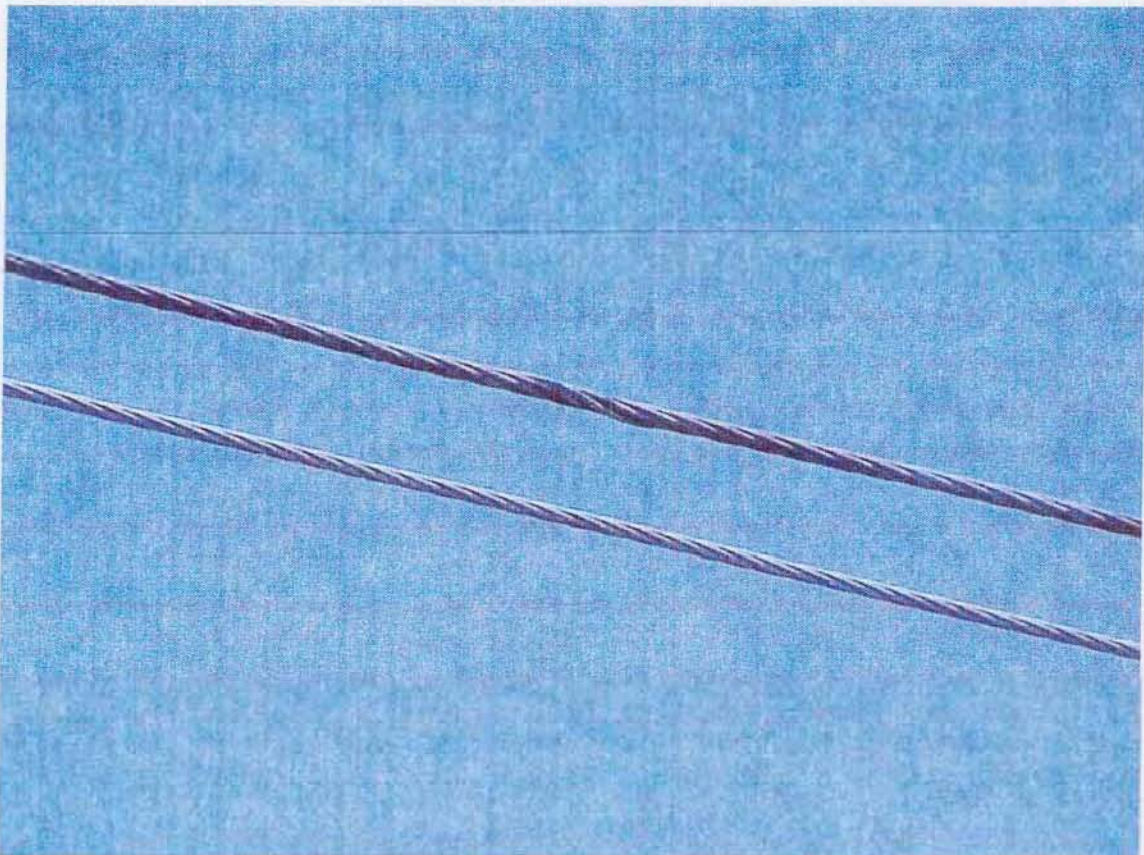


Photo # 10 Closer view of the bubble in the conductor at right of photo # 9

Fire: Red Bridge # DM93 Supplemental

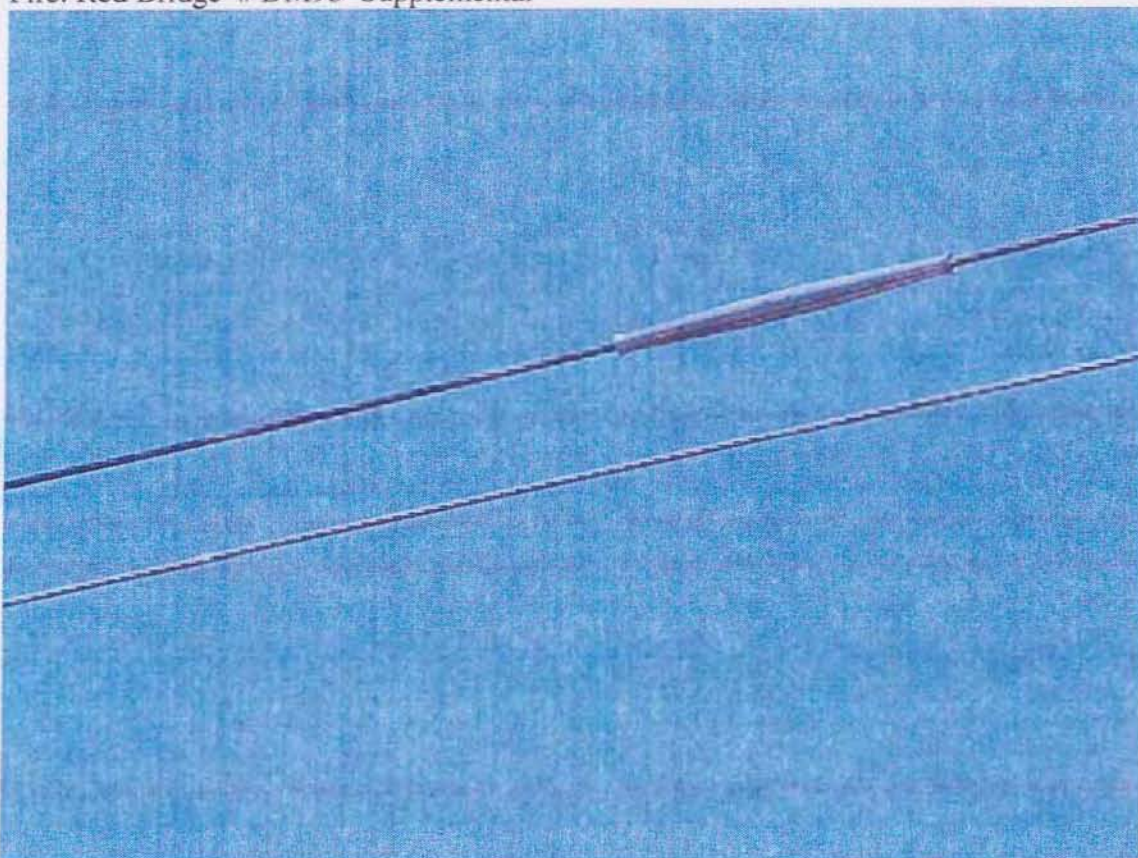


Photo # 11 Next splice east of photo # 9 – again note color variations

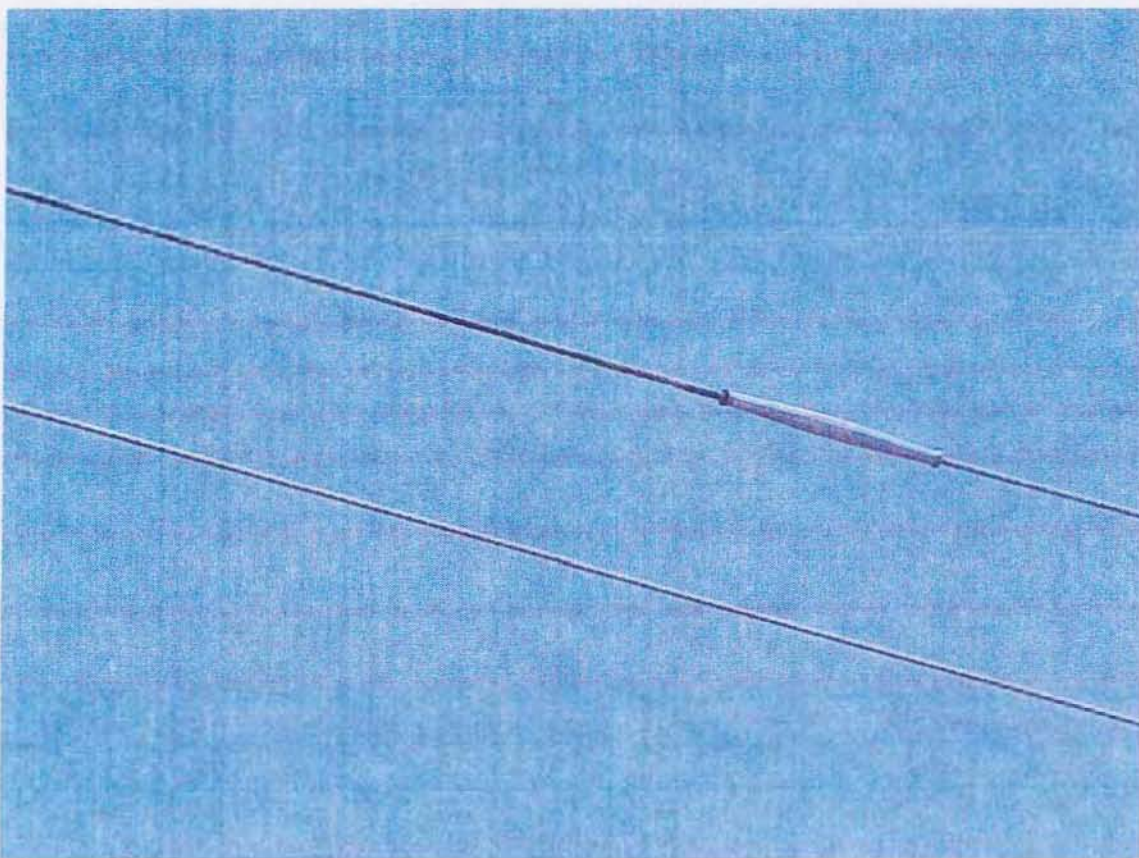


Photo # 12 Next splice east of photo # 11 – apparent new conductor at right

Fire: Red Bridge # DM93 Supplemental

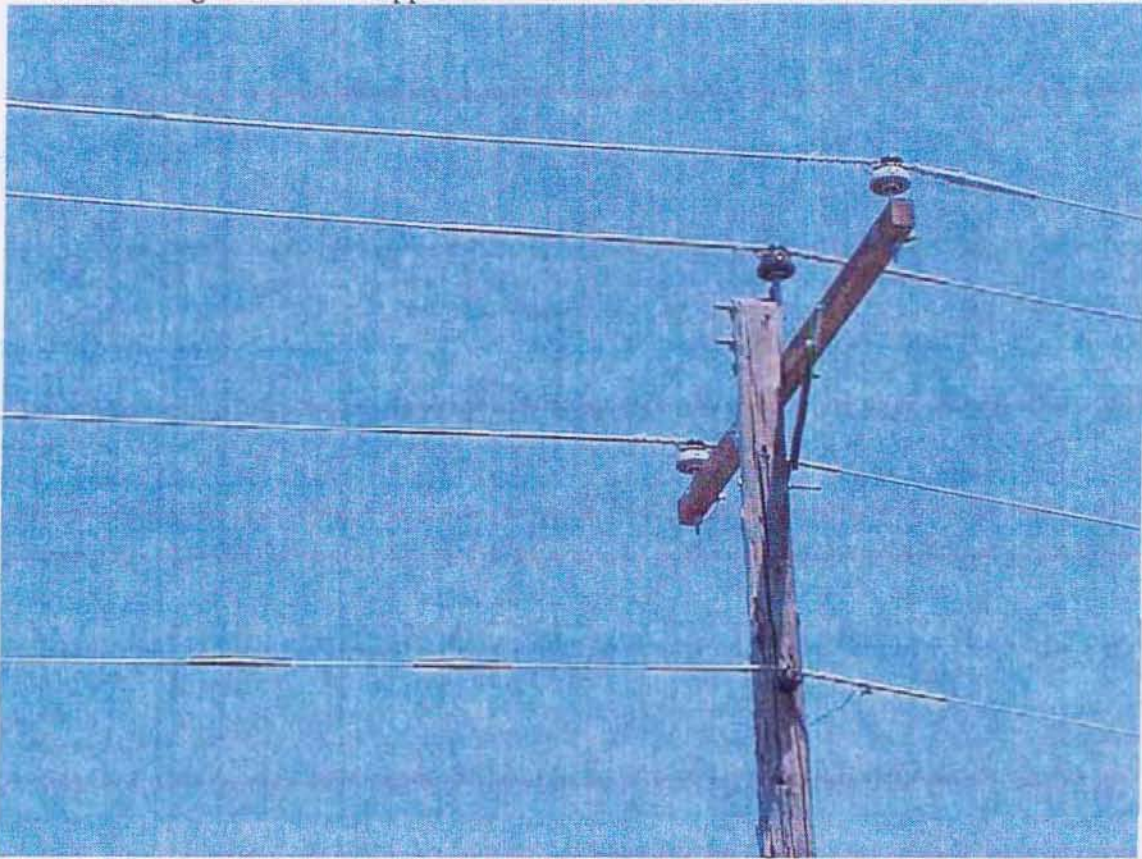


Photo # 13 View of the top of the pole nearest origin, note splice in ground line

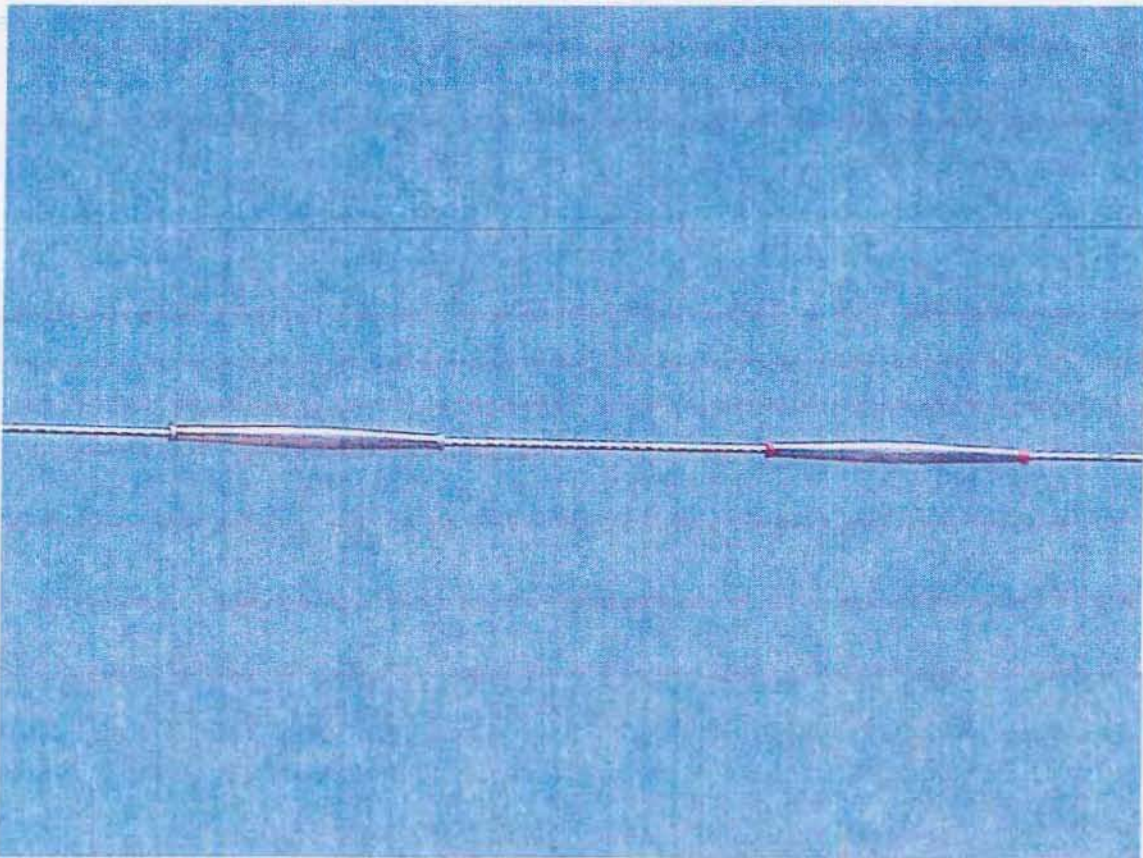


Photo # 14 Closer view of the two splices on the ground line

Fire: Red Bridge # DM93 Supplemental



Photo # 15 View of the origin area, facing east toward pole in photo # 13



Photo # 16 Closer view of melted aluminum pieces collected, lower right of photo # 15

Fire: Red Bridge # DM93 Supplemental



Photo # 17 Third span east of the point of origin, facing east – Photo taken 7-24-2007



Photo # 18 Third span east of the point of origin, facing west – Photo taken 7-24-2007

Fire: Red Bridge # DM93 Supplemental

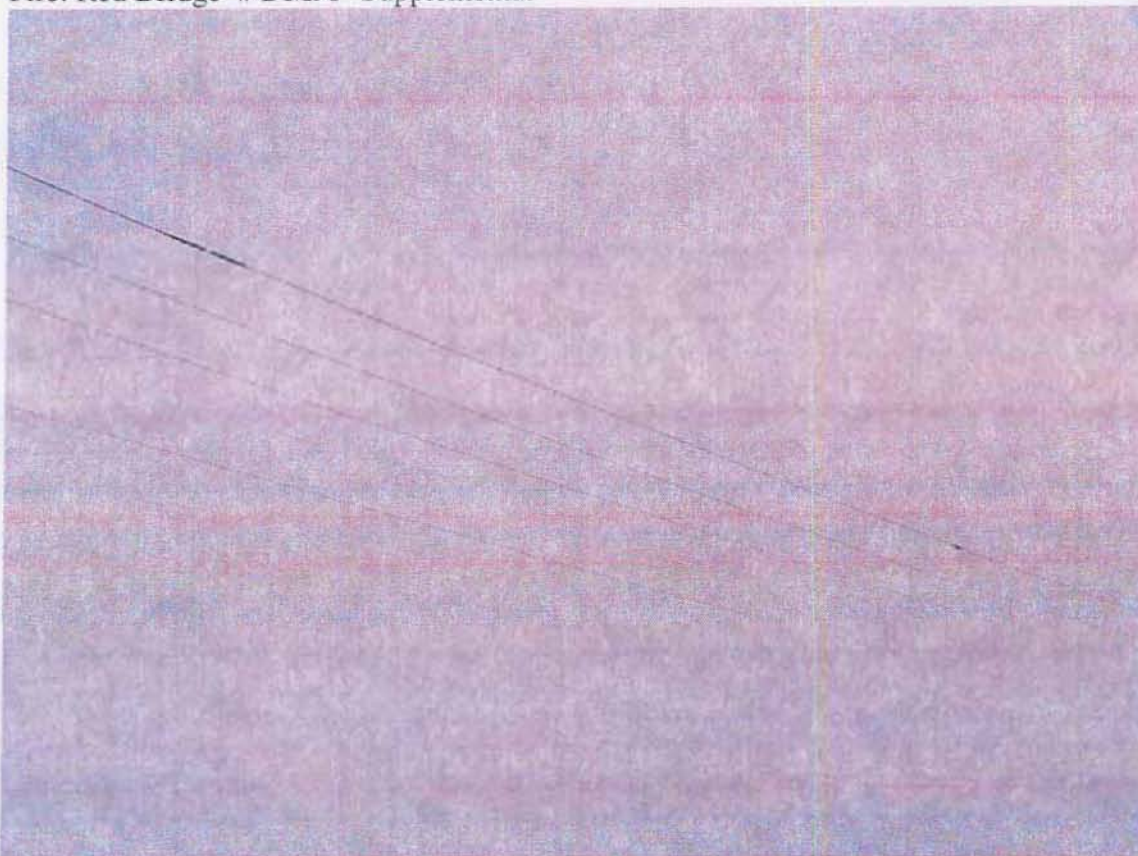


Photo # 19 View of the conductor and splices in the third span east of the origin

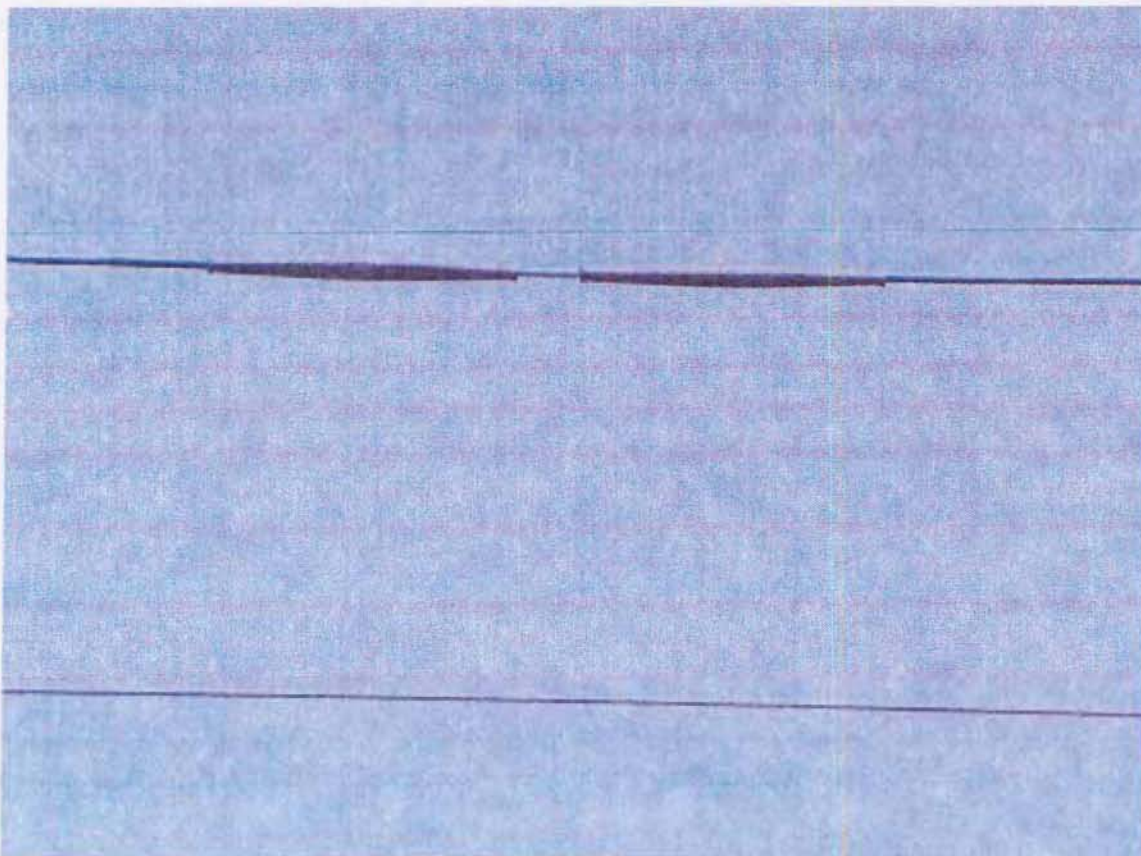


Photo # 20 Splices at upper left of photo # 19 – note black lines outside splice, new inside

Fire: Red Bridge # DM93 Supplemental

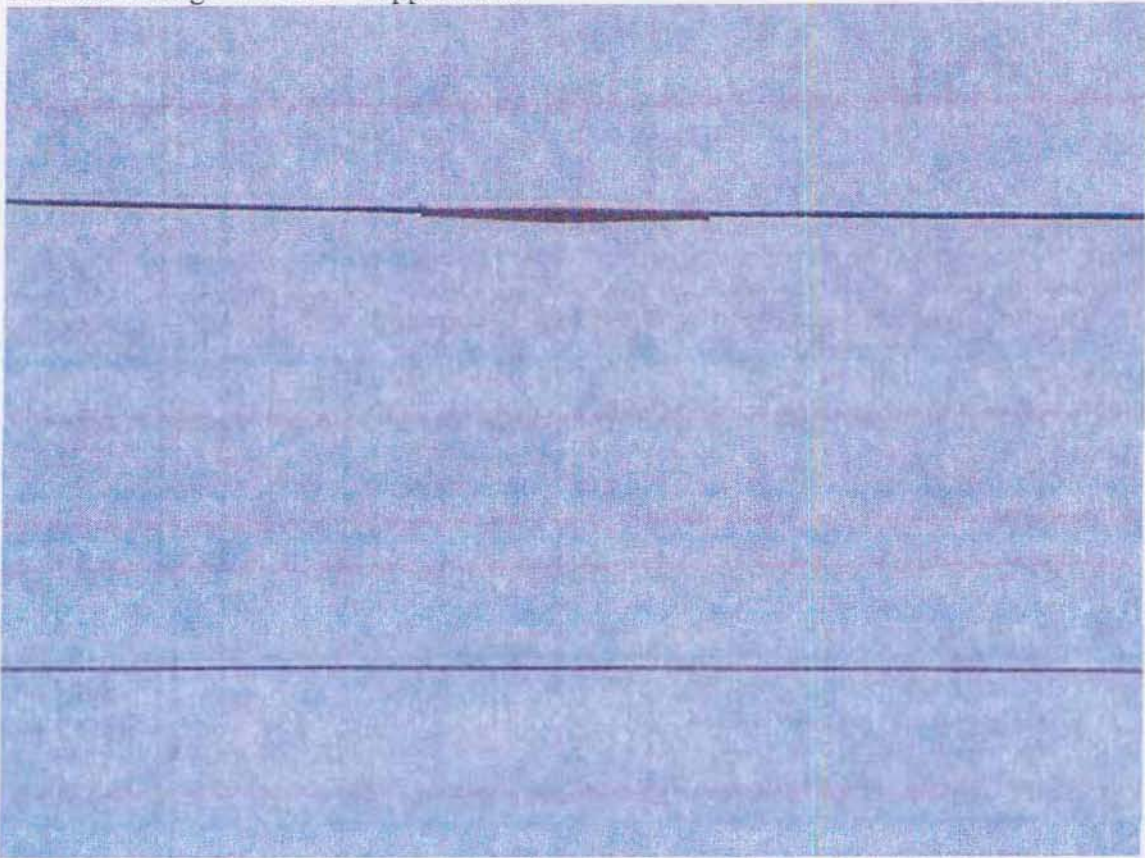


Photo # 21 Next splice to the east at right in photo # 19 – Photo taken 7-24-2007

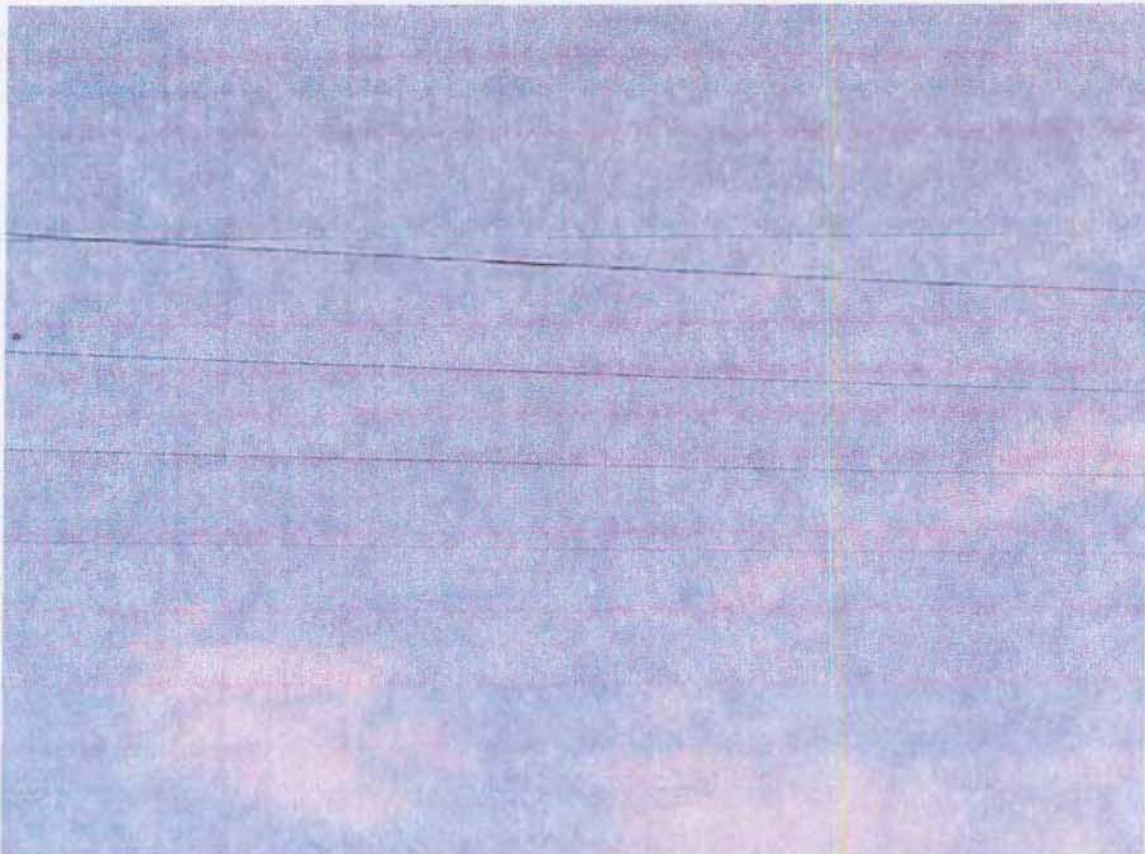


Photo # 22 Distant view of photo # 21, facing north for position among conductors