

Fire: Red Bridge #: DM93



Photo # 1 Over all view of fire/general origin area, facing North.



Photo # 2 Over all view of fire/general origin area, facing West.

Fire: Red Bridge #: DM93



Photo # 4 Over all view of fire/general origin area, facing East.

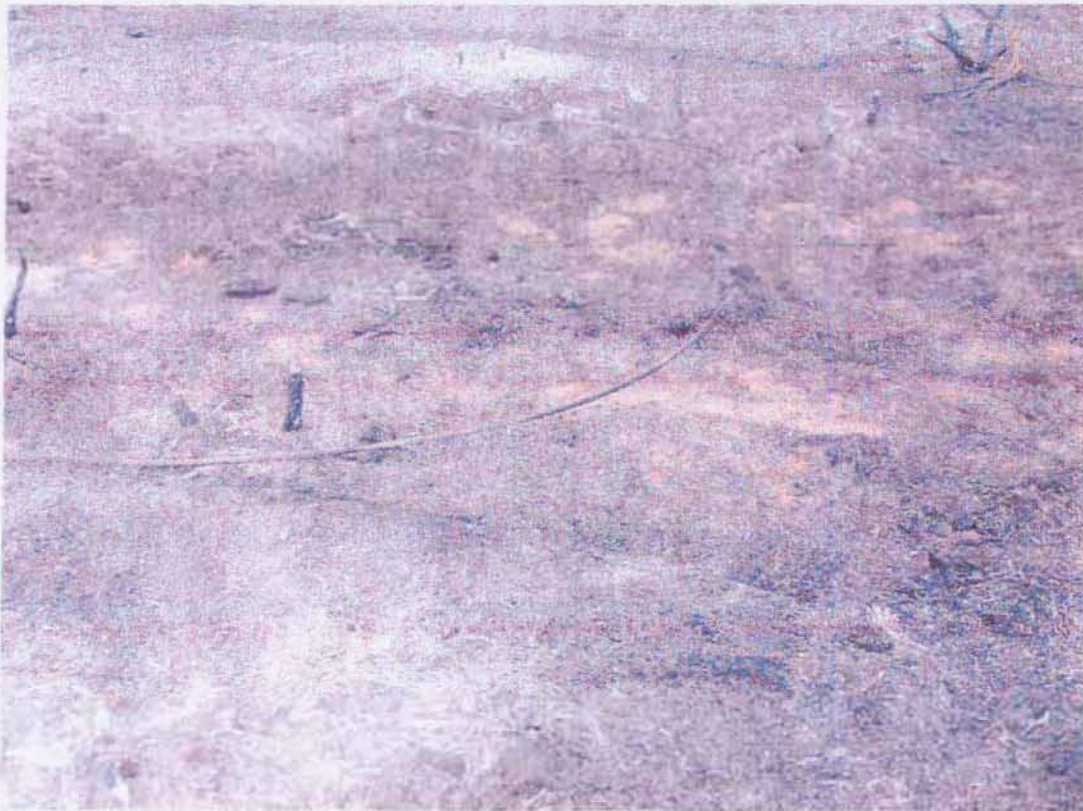


Photo # 6 End of power line in general origin area. (End on the East side – facing North)

Fire: Red Bridge #: DM93



Photo # 7 End of power line in general origin area. (End on West side – facing North)



Photo # 8 Closest power pole where line went down. Note: broken power line on the ground to the right of pole. Facing South West.

Fire: Red Bridge #: DM93

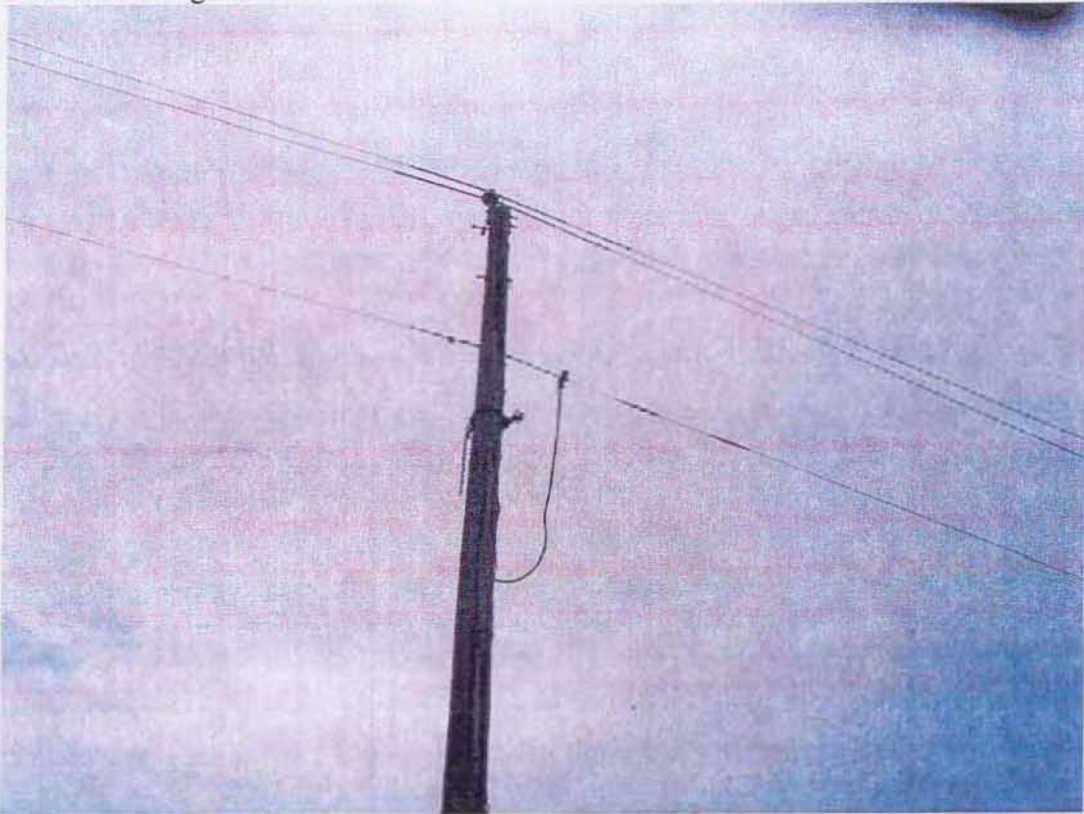


Photo # 9 Top of same power pole shown in photo #8.



Photo # 10 End of power line (I am holding it up) facing South.

Fire: Red Bridge #: DM93



Photo # 11 Same end of power line shown in photo #10, laying on the ground.

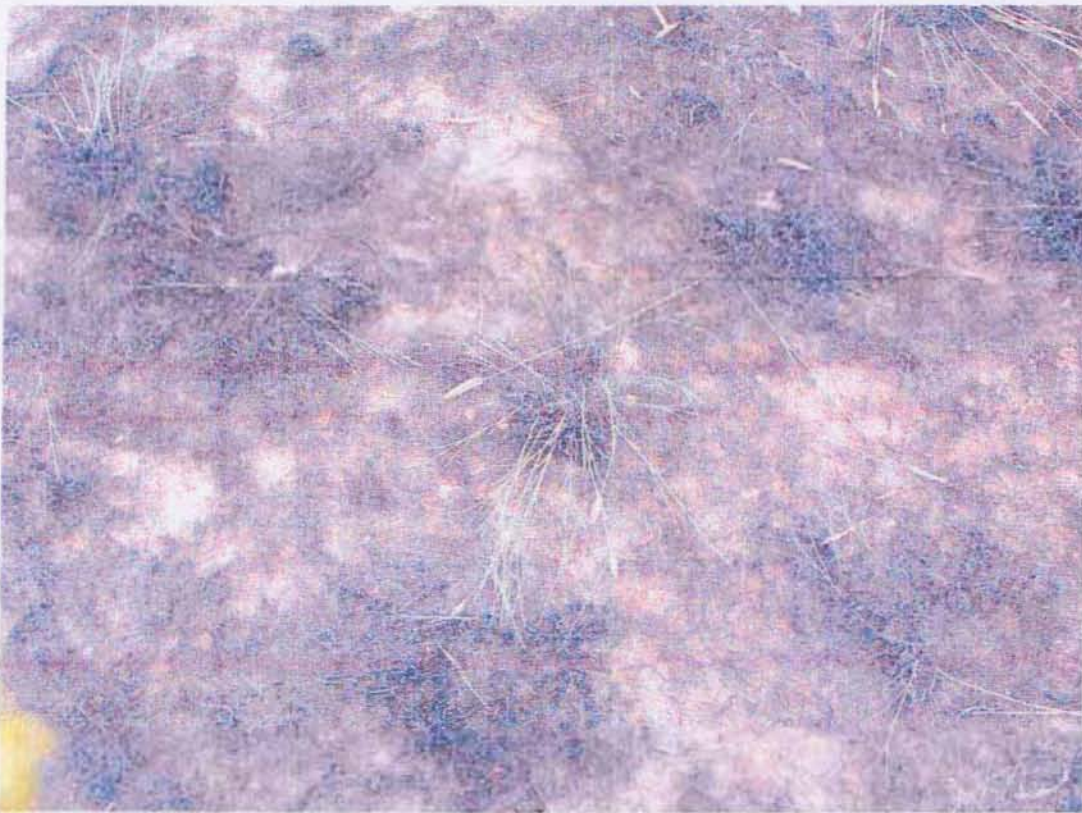


Photo # 12 Backing indicator, facing South. Fire backing bottom to top of photo.

Fire: Red Bridge #: DM93



Photo # 13 Advancing indicator, facing North West. Fire advancing left to right in photo.

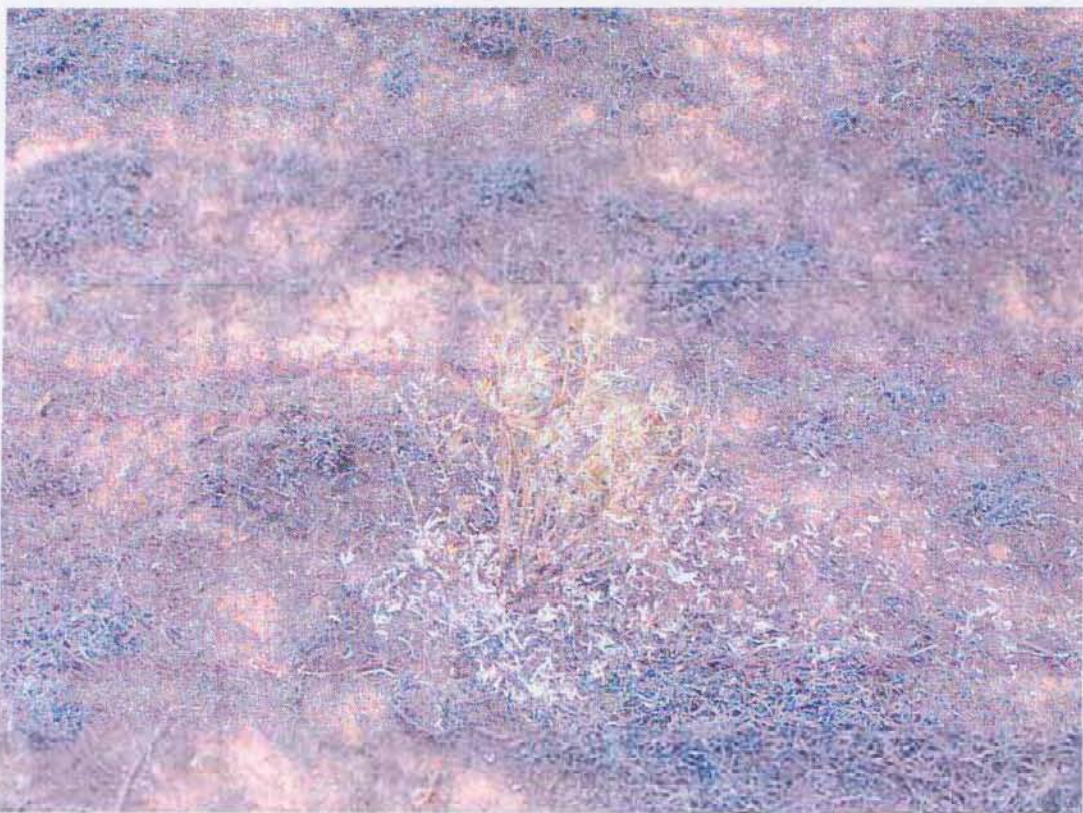


Photo # 14 Lateral indicator, facing North. Note: unburned fuel and foliage freeze indicating that the wind was coming from the South West.

Fire: Red Bridge #: DM93



Photo # 15 View of specific origin areas, facing South.



Photo # 16 View of specific origin areas, facing South East.

Fire: Red Bridge #: DM93



Photo # 17 View of specific origin area, facing North East.



Photo # 3 Overall view of fire/general origin area, facing West – compare to photo # 2



Photo # 5 Overall view of fire/general origin area, facing East – compare to photo # 4