

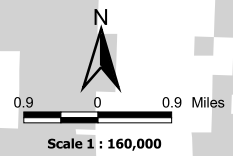
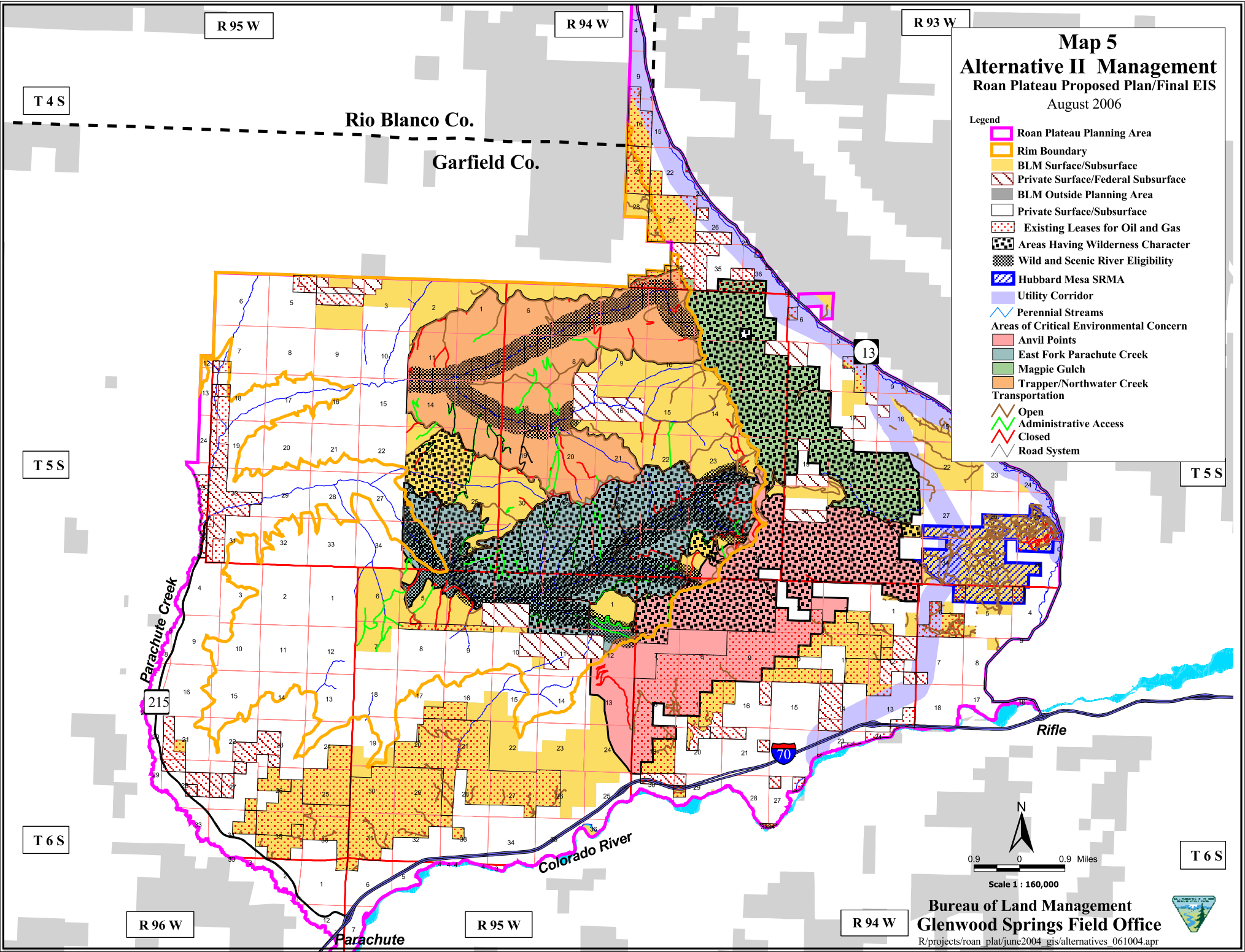
Map 5

Alternative II Management

Roan Plateau Proposed Plan/Final EIS

August 2006

- Legend**
- Roan Plateau Planning Area
 - Rim Boundary
 - BLM Surface/Subsurface
 - Private Surface/Federal Subsurface
 - BLM Outside Planning Area
 - Private Surface/Subsurface
 - Existing Leases for Oil and Gas
 - Areas Having Wilderness Character
 - Wild and Scenic River Eligibility
 - Hubbard Mesa SRMA
 - Utility Corridor
 - Perennial Streams
 - Areas of Critical Environmental Concern**
 - Anvil Points
 - East Fork Parachute Creek
 - Magpie Gulch
 - Trapper/Northwater Creek Transportation
 - Open Administrative Access
 - Closed Administrative Access
 - Road System



Bureau of Land Management
 Glenwood Springs Field Office
 R/projects/roan_plat/june2004_gis/alternatives_061004.apr

