

U.S. Department of the Interior  
Bureau of Land Management  
Glenwood Springs Energy Office  
2425 S. Grand Avenue, Suite 101  
Glenwood Springs, CO 81601

**Statutory Categorical Exclusion, CO140-2008-095**

**Project:** Proposal to Directionally Drill One Well into Federal Lease COC66576 from an Existing Private Pad location (Miller #6).

**Location:** Township 7 South, Range 91 West, Section 6, SE¼SW¼, 6<sup>th</sup> Principal Meridian

**Proposal:** Bill Barrett Corporation proposes to directionally drill the following well from an existing pad on private land: **Miller Federal 23A-6-791**. This well would access fluid minerals in Federal lease COC66576. See attached Project Map. No new surface disturbance is anticipated so activities would occur within the existing disturbed area.

The Miller Federal 23A-6-791 well and eight fee wells are planned to be drilled from this same location. These would be in addition to four producing wells that were drilled in 2007. The Miller 14D-6-791 well was spud on June 28, 2007. An existing Right-of-Way (Serial # COC70837) for the access road will be utilized to access this location.

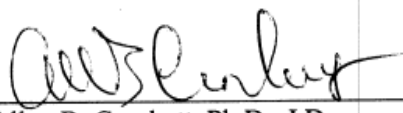
**BLM Conditions of Approval:** Conditions and stipulations that would be included on the Applications for Permit to Drill (APDs) are attached.

**NEPA Compliance:** The following category of Categorical Exclusions pursuant to Section 390 of the Energy Policy Act (Act of 2005) apply to this proposal:

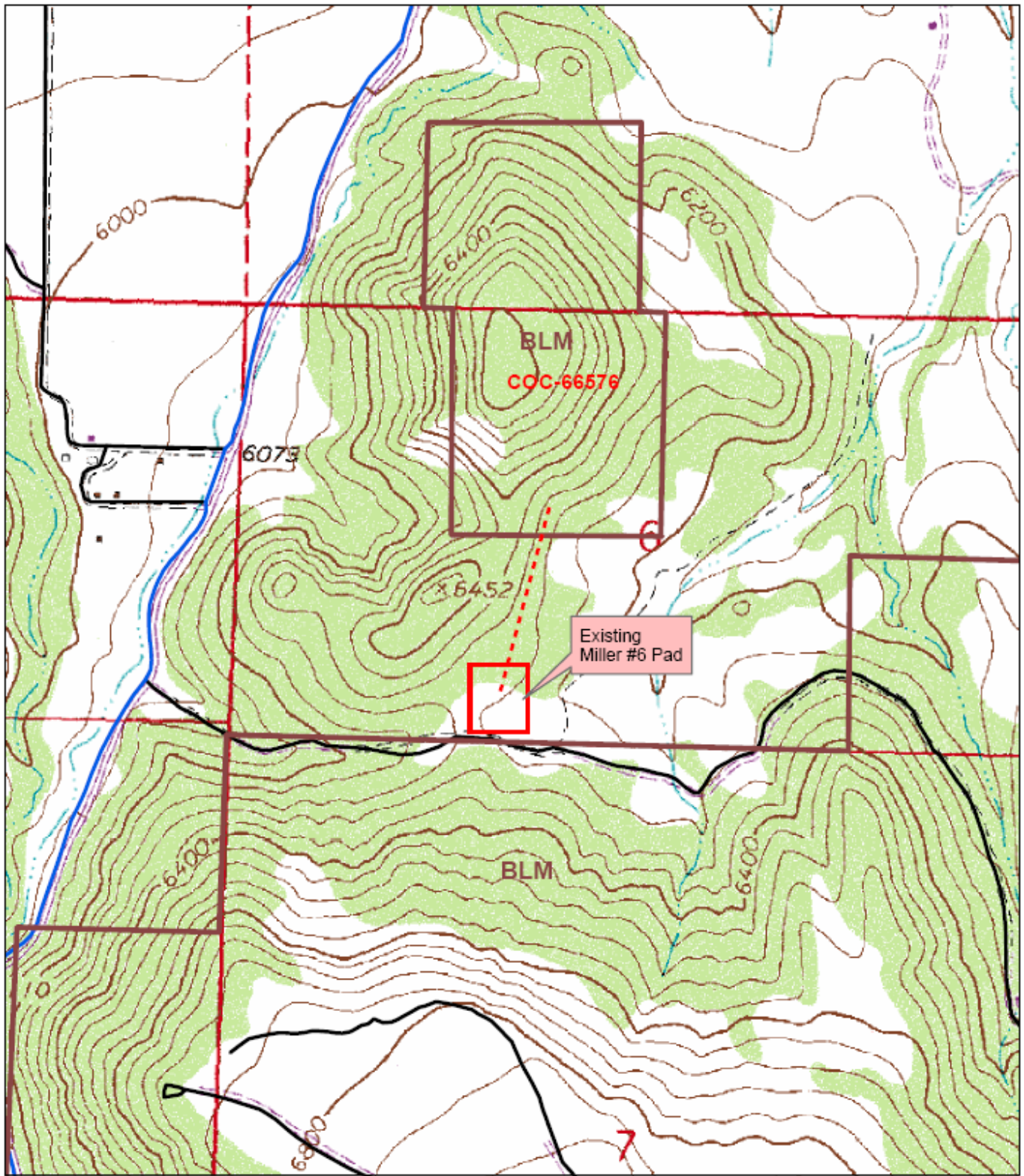
Category #2: *"Drilling an oil and gas location or well pad at a site which drilling has occurred within five (5) years prior to the date of spudding the well."* The Miller 14D-6-791 was spud on 6/28/07.

**Prepared by:** Rick Haskins, Natural Resource Specialist

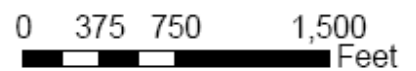
**Approval:** It is my decision to approve the proposed action with the above referenced terms and conditions:

  
\_\_\_\_\_  
Allen B. Crockett, Ph.D., J.D.  
Supervisory Natural Resource Specialist

Date 6-10-08



Bill Barrett Corporation  
 Surface: Private, T7S, R91W, Section 6, SESW  
 Bottom Hole Location    - - - - -  
 Miller Federal NESW, 1529' FSL, 2025' FWL, Sec. 6, T7S, R91W



**Figure 1. Existing Miller #6 Pad Location**

CONDITIONS OF APPROVAL  
APPLICATION FOR PERMIT TO DRILL

Company/Operator: **Bill Barrett Corporation**

Well Name	Well No.	Surface Hole Location	Bottom Hole Location	Lease
Miller Fed	23A-6-791	SESW Sec 6 T07S, R91W	NESW Sec 6 T07S, R91W	COC-66576

**NOTIFICATION REQUIREMENTS**

- Location Construction - at least forty-eight (48) hours prior to construction of location and access roads.
- Spud Notice - at least twenty-four (24) hours prior to and after spud.
- Casing String and Cementing - at least twenty-four (24) hours prior to running casing and cementing all casing strings.
- BOP and Related Equipment Tests - at least twenty-four (24) hours prior to initiating pressure tests.
- First Production-Notice - within five (5) business days after new well begins, or production resumes after well has been off production for more than ninety (90) days.
- Reclamation - At least (24) hours prior to re-shaping the well pad.

For more specific details on notification requirements, please check the Conditions of Approval for Notice to Drill and Surface Use Program.

**APD approval is valid for a period of two (2) year from the signature date. An extension period may be granted, if requested, prior to the expiration of the original approval period.**

Please contact Steve Ficklin (970) 947-5213 of the Glenwood Springs Energy Office at least 24 hours prior to and after spud.

Please contact **Steve Ficklin (970) 947-5213, Julie King (970) 947-5239 or Todd Sieber (970) 947-5220 of the Glenwood Springs Energy Office** at least 24 hours prior to running the surface and production casing and conducting the BOP test.

In accordance with 43-CFR 3162.4(b) submit a complete set of electrical/mechanical logs in **.LAS** format with standard Form 3160-4, Well Completion or Recompletion Report and Log. Please contact Karen Conrath, (970) 947-5235 ([karen\\_conrath@blm.gov](mailto:karen_conrath@blm.gov)), for further clarification.

## DOWNHOLE CONDITIONS OF APPROVAL FOR NOTICE TO DRILL

1. The **MINIMUM TOC** for the production casing needs to be **at least 200'** above the top of the **Mesa Verde** formation either during the primary cement job or through remedial cementing. 500' above the top of gas is a Colorado State requirement.
2. A cement bond log (CBL) will be run from the production casing shoe to **TOC** and shall be utilized to determine the bond quality for the production casing.
3. Air drilling requirements: Contact Marty O'Mara, BLM, should BBC decide to air drill the surface hole. The bloopie line must be at least 100' in length and must go to a separate flare pit, as per Sheet 7 of 11 (Production Schematic). Spark arrestors are required on the compressors. A properly lubricated and maintained rotating head and a float valve above the bit are required.
4. In addition to the Onshore Order No. 2 BOP testing requirements, for safety concerns, please test BOP to 250 psi for 5 minutes.

## REGULATORY REMINDERS

Approval of this application does not warrant or certify that the applicant holds legal or equitable title to those rights in the subject lease which would entitle the applicant to conduct operations thereon.

All drilling operations, unless otherwise specifically approved in the APD, must be conducted in accordance with Onshore Oil and Gas Order No. 2.

All lease and/or unit operations will be conducted in such a manner that full compliance is made with applicable laws, regulations (43 CFR 3100), Onshore Oil and Gas Orders, and the approved plan of operations. The operator is fully responsible for the actions of his subcontractors.

A copy of the approved application for permit to drill (APD), including the conditions of approval and accompanying surface use plan will be furnished to the field representative by the operator to insure compliance and will be available to authorized personnel at the drillsite whenever active construction or drilling operations are underway.

**Be aware fire restrictions may be in effect when location is being constructed and/or when well is being drilled. Contact the appropriate Surface Management Agency for information.**

Section 102(b)(3) of the Federal Oil and Gas Royalty Management Act of 1982, as implemented by the applicable provisions of the operating regulations at Title 43 CFR 3162.4-1(c), requires that "not later than the 5th business day after any well begins production on which royalty is due anywhere on a lease site or allocated to a lease site, or resumes production in the case of a well which has been off production for more than 90 days, the operator shall notify the authorized officer by letter or sundry notice, Form 3160-5, or orally to be followed by a letter or sundry notice, of the date on which such production has begun or resumed."

If you fail to comply with this requirement in the manner and time allowed, you shall be liable for a civil penalty of up to \$10,000 per violation for each day such violation continues, not to exceed a maximum of 20 days. See Section 109(c)(3) of the Federal Oil and Gas Royalty Management Act of 1982 and the implementing regulations at Title 43 CFR 3162.4-1(b)(5)(ii).

In the event after-hours approval or notification is necessary, please contact one of the following individuals:

Marty O'Mara	W: 970.947.5221
Petroleum Engineer	W: 970.319.5837

Julie King	W: 970.947.5239
Petroleum Engineering Tech.	C: 970.319.2211

Todd Sieber	W: 970.947.5220
Petroleum Engineering Tech.	C: 970.319.7887

Steve Ficklin	W: 970.947.5213
Lead Petroleum Eng Tech.	C: 970.319.2509

BLM Fax: 970.947.5267

## EPA'S LIST OF NONEXEMPT EXPLORATION AND PRODUCTION WASTES

While the following wastes are nonexempt, they are not necessarily hazardous.

- Unused fracturing fluids or acids
- Gas plant cooling tower cleaning wastes
- Painting wastes
- Oil and gas service company wastes, such as empty drums, drum rinsate, vacuum truck rinsate, sandblast media, painting wastes, spent solvents, spilled chemicals, and waste acids
- Vacuum truck and drum rinsate from trucks and drums, transporting or containing nonexempt waste
- Refinery wastes
- Liquid and solid wastes generated by crude oil and tank bottom reclaimers
- Used equipment lubrication oils
- Waste compressor oil, filters, and blowdown
- Used hydraulic fluids
- Waste solvents
- Waste in transportation pipeline-related pits
- Caustic or acid cleaners
- Boiler cleaning wastes
- Boiler refractory bricks
- Incinerator ash
- Laboratory wastes
- Sanitary wastes
- Pesticide wastes
- Radioactive tracer wastes
- Drums, insulation and miscellaneous solids.

## STANDARD SURFACE USE CONDITIONS OF APPROVAL

*The following Conditions of Approval (COAs) are in addition to all stipulations attached to the respective Federal leases and to any site-specific COAs for individual well pads.*

1. Administrative Notification. The operator shall notify the BLM representative at least 48 hours prior to initiation of construction.
2. Road Construction and Maintenance. Roads shall be crowned, ditched, surfaced, drained with culverts and/or water dips, and constructed to BLM Gold Book standards. Initial gravel application shall be a minimum of 4 inches. The operator shall provide timely year-round road maintenance and cleanup on the access roads. A regular schedule for maintenance shall include, but not be limited to, blading, ditch and culvert cleaning, road surface replacement, and dust abatement. When rutting within the traveled way becomes greater than 6 inches, blading, and/or gravelling shall be conducted as approved by the authorized officer.
3. Dust Abatement. The operator shall implement dust abatement measures as needed or directed by the BLM authorized officer. The level and type of treatment (watering or application of various dust agents, surfactants, and road surfacing material) may be changed in intensity and must be approved by the BLM authorized officer.
4. Drainage Crossings and Culverts. Construction activities at perennial, intermittent, and ephemeral drainage crossings (e.g. burying pipelines, installing culverts) shall be timed to avoid high flow conditions and shall consist of either a piped stream diversion or the use of a coffer dam and pump to divert flow around the disturbed area.

Culverts at drainage crossings shall be designed and installed to pass a 25-year or greater storm event. On perennial and intermittent streams, culverts shall be designed to allow for passage of aquatic biota. The minimum culvert diameter in any installation for a drainage crossing or road drainage shall be 18 inches. Contact Jeff O'Connell, Glenwood Springs Energy Office Hydrologist, at 970-947-5215 or jeffrey\_o'connell@blm.gov. Crossings of drainages deemed to be jurisdictional waters of the U.S. pursuant to Section 404 of the Clean Water Act may require additional culvert design capacity. Due to the flashy nature of area drainages and anticipated culvert maintenance, the U.S. Army Corps of Engineers recommends designing drainage crossings for the 100-year event. Contact Sue Nall at 970-243-1199 x16 or susan.nall@usace.army.mil.

Pipelines installed beneath stream crossings shall be buried at a minimum depth of 4 feet below the channel substrate to avoid exposure by channel scour and degradation. Following burial, the channel grade and substrate composition shall be returned to pre-construction conditions.

5. Jurisdictional Waters of the U.S. The operator shall obtain appropriate permits from the U.S. Army Corps of Engineers prior to discharging fill material into waters of the U.S. in accordance with Section 404 of the Clean Water Act. Waters of the U.S. are defined in 33 CFR Section 328.3 and may include wetlands as well as perennial, intermittent, and ephemeral streams. Permanent impacts to waters of the U.S. may require mitigation. Contact Sue Nall, Regulatory Specialist, Colorado/Gunnison Basin Regulatory Office, U.S. Army Corps of Engineers, at 970-243-1199 x16 or susan.nall@usace.army.mil.

6. Wetlands and Riparian Zones. The operator shall restore temporarily disturbed wetlands or riparian areas. The operator shall consult with the BLM Glenwood Springs Energy Office to determine appropriate mitigation, including verification of native plant species to be used in restoration. Contact Glenwood Springs Energy Office Hydrologist.
7. Reclamation. The goals, objectives, timelines, measures, and monitoring methods for final reclamation of oil and gas disturbances are described in Appendix I (Surface Reclamation) of the 1998 Draft Supplemental EIS (DSEIS). Specific measures to follow during interim and temporary (pre-interim) reclamation are described below.

- a. Deadline for Temporary Seeding and Interim Reclamation. Topsoil storage piles, stormwater control features, and cut-and-fill slopes shall undergo temporary seeding to stabilize the material and minimize weed infestations within 30 days following completion of pad construction. Interim reclamation to reduce a well pad to the maximum size needed for production shall be completed within 6 months following completion of the last well planned for the pad.

Both of these deadlines are subject to being extended upon approval of the authorized officer based on season, timing limitations, or other constraints on a case-by-case basis.

- b. Topsoil Stripping, Storage, and Replacement. Topsoil shall be stripped following removal of vegetation during construction of well pads, pipelines, roads, or other surface facilities. This shall include, at a minimum, the upper 6 inches of soil. Any additional topsoil present at a site, such as indicated by color or texture, shall also be stripped. The authorized officer may specify a stripping depth during the onsite visit. The stripped topsoil shall be stored separately from subsoil or other excavated material and replaced prior to final seedbed preparation.
- c. Seedbed Preparation. For cut-and-fill slopes, initial seedbed preparation shall consist of backfilling and recontouring to achieve the configuration specified in the reclamation plan. For compacted areas, initial seedbed preparation shall include ripping to a minimum depth of 18 inches, with a maximum furrow spacing of 2 feet. Where practicable, ripping shall be conducted in two passes at perpendicular directions. Following final contouring, the backfilled or ripped surfaces shall be covered evenly with topsoil.

Final seedbed preparation shall consist of scarifying (raking or harrowing) the spread topsoil prior to seeding. If more than one season has elapsed between final seedbed preparation and seeding, and if the area is to be broadcast-seeded or hydroseeded, this step shall be repeated no more than 1 day prior to seeding to break up any crust that has formed.

Seedbed preparation is not required for topsoil storage piles or other areas of temporary seeding.

Requests for use of soil amendments, including basic product information, shall be submitted to the BLM for approval.

- d. Seed Mixes. A seed mix consistent with BLM standards in terms of species and seeding rate for the specific habitat type shall be used on all BLM lands affected by the project (see Attachments 1 and 2 of the letter provided to operators dated May 1, 2008). Note that temporary seeding allows use of a seed mix containing sterile hybrid non-native species in addition to native perennial species.

For private surfaces, the menu-based seed mixes are recommended, but the surface landowner has ultimate authority over the seed mix to be used in reclamation. The seed shall contain no

noxious, prohibited, or restricted weed seeds and shall contain no more than 0.5 percent by weight of other weed seeds. Seed may contain up to 2.0 percent of “other crop” seed by weight, including the seed of other agronomic crops and native plants; however, a lower percentage of other crop seed is recommended. Seed tags or other official documentation shall be supplied to the BLM Glenwood Springs Energy Office Ecologist (Beth Brenneman, 970-947-5232 or beth\_brenneman@blm.gov) at least 14 days before the date of proposed seeding for acceptance. Seed that does not meet the above criteria shall not be applied to public lands.

- e. Seeding Procedures. Seeding shall be conducted no more than 24 hours following completion of final seedbed preparation.

Where practicable, seed shall be installed by drill-seeding to a depth of 0.25 to 0.5 inch. Where drill-seeding is impracticable, seed may be installed by broadcast-seeding at twice the drill-seeding rate, followed by raking or harrowing to provide 0.25 to 0.5 inch of soil cover. Hydroseeding and hydromulching may be used in temporary seeding or in areas where drill-seeding or broadcast-seeding/raking are impracticable. Hydroseeding and hydromulching must be conducted in two separate applications to ensure adequate contact of seeds with the soil.

If interim revegetation is unsuccessful, the operator shall implement subsequent reseedings until interim reclamation standards are met. Requirements for reseedings of unsuccessful temporary seeding will be considered on a case-by-case basis.

- f. Mulch. Mulch shall be applied within 24 hours following completion of seeding. In areas of interim reclamation that used drill-seeding or broadcast-seeding/raking, mulch shall consist of crimping certified weed-free straw or certified weed-free native grass hay into the soil. Hydromulching may be used in areas of interim reclamation where crimping is impracticable, in areas of interim reclamation that were hydroseeded, and in areas of temporary seeding regardless of seeding method.

NOTE: Mulch is not required in areas where erosion potential mandates use of a biodegradable erosion-control blanket (straw matting).

- g. Erosion Control. Cut-and-fill slopes shall be protected against erosion with the use of water bars, lateral furrows, or other measures approved by the authorized officer. Biodegradable straw matting, bales or wattles of weed-free straw or weed-free native grass hay, or well-anchored fabric silt fence shall be used on cut-and-fill slopes and along drainages to protect against soil erosion. Additional BMPs shall be employed as necessary to reduce erosion and offsite transport of sediment.
- h. Site Protection. The pad shall be fenced to BLM standards to exclude livestock grazing for the first two growing seasons or until seeded species are firmly established, whichever comes later. The seeded species will be considered firmly established when at least 50 percent of the new plants are producing seed. The authorized officer will approve the type of fencing.
- i. Monitoring. The operator shall conduct annual monitoring surveys of reclaimed areas and shall submit an annual monitoring report to the authorized officer by **December 31** of each year. The monitoring program shall use the four Reclamation Categories defined in Appendix I of the 1998 DSEIS to assess progress toward reclamation objectives. The annual report shall document whether attainment of reclamation objectives appears likely. If one or more objectives appear unlikely to be achieved, the report shall identify appropriate corrective actions. Upon review and

approval of the report by the BLM, the operator shall be responsible for implementing the corrective actions or other measures specified by the authorized officer.

8. Weed Control. The operator shall regularly monitor and promptly control noxious weeds or other undesirable plant species as set forth in the Glenwood Springs Energy Office *Noxious and Invasive Weed Management Plan for Oil and Gas Operators*, dated March 2007. A Pesticide Use Proposal (PUP) must be approved by the BLM prior to the use of herbicides. Annual weed monitoring reports shall be submitted by **December 31**. Contact Beth Brenneman, Glenwood Springs Energy Office Ecologist, at 970-947-5232 or beth\_brenneman@blm.gov.
9. Big Game Winter Range Timing Limitation. Although Federal Lease COC 66576 contains a seasonal timing limitation (TL) from December 1 to April 30, this stipulation does not apply to the Federal well drilled from this pad with regard to big game winter range. The basis for this is that extensive private mineral estate development is occurring on this location and limiting the directional drilling of a federal well would have minimal benefit to wintering big game.
10. Raptor Nesting. To ensure compliance with the Migratory Bird Treaty Act (MBTA) with respect to nesting raptors, the operator should schedule construction or drilling activities to begin outside the raptor nesting season (February 1 to August 15) if practicable. If initiation of construction or drilling during these dates cannot be avoided, the operator is responsible for complying with the MBTA, which prohibits the “take” of birds or active nests (those containing eggs or young), including nest failure caused by noise and human activity. Contact Jeff Cook, Glenwood Springs Energy Office Wildlife Biologist, at 970-947-5231 or jeffrey\_cook@blm.gov).
11. Migratory Birds. It shall be the responsibility of the operator to comply with the Migratory Bird Treaty Act (MBTA) with respect to “take” of waterfowl or other migratory bird species. Under the MBTA, “take” means to harass, harm, pursue, hunt, shoot, wound, kill, trap, capture, or collect, or to attempt to engage in any such conduct. The operator shall prevent use by waterfowl and other migratory birds of reserve pits, produced water pits, and evaporation pits that store or are expected to store fluids, which may pose a risk to such birds during completion and after completion activities have ceased. Methods to prevent bird access by birds include but are not limited to netting, floating bird-balls, and other means of preventing bird access/use. Regardless of the method used, it should be applied within 24 hours after completion activities have begun. All mortality or injury to species protected by the MBTA shall be reported immediately to the BLM project lead. Contact Jeff Cook, Glenwood Springs Energy Office Wildlife Biologist, at 970-947-5231 or jeffrey\_cook@blm.gov).
12. Birds of Conservation Concern: Pursuant to BLM Instruction Memorandum 2008-050, all surface-disturbing activities are prohibited from May 1 to June 30 to reduce impacts to Birds of Conservation Concern (BCC). An exception to this COA will be granted if nesting surveys conducted no more than one week prior to surface-disturbing activities indicate that no BCC species are nesting or otherwise present within 10 meters of the area to be disturbed. Nesting surveys shall include an audial survey for diagnostic vocalizations in conjunction with a visual survey for adults and nests. Surveys shall be conducted by a qualified breeding bird surveyor between sunrise and 10:00 AM under favorable conditions for detecting and identifying a BCC species. Contact Jeff Cook, Glenwood Springs Energy Office Wildlife Biologist, at 970-947-5231 or jeffrey\_cook@blm.gov).
13. Range Management. Range improvements (fences, gates, reservoirs, pipelines, etc) shall be avoided during development of natural gas resources to the maximum extent possible. If range improvements are damaged during exploration and development, the operator will be responsible for repairing or replacing the damaged range improvements. If a new or improved access road bisects an existing

livestock fence, steel frame gate(s) or a cattleguard with associated bypass gate shall be installed across the roadway to control grazing livestock.

14. Ips Beetle. To avoid mortality of pinyon pines due to infestations of the *Ips* beetle, any pinyon trees damaged during road, pad, or pipeline construction shall be chipped after being severed from the stump or grubbed from the ground, buried in the toe of fill slopes (if feasible), or cut and removed from the site within 24 hours to a location approved by the Colorado State Forest Service.
15. Paleontological Resources. All persons associated with operations under this authorization shall be informed that any objects or sites of paleontological or scientific value, such as vertebrate or scientifically important invertebrate fossils, shall not be damaged, destroyed, removed, moved, or disturbed. If in connection with operations under this authorization any of the above resources are encountered the operator shall immediately suspend all activities in the immediate vicinity of the discovery that might further disturb such materials and notify the BLM authorized officer of the findings. The discovery must be protected until notified to proceed by the BLM authorized officer.

Where feasible, the operator shall suspend ground-disturbing activities at the discovery site and immediately notify the BLM authorized officer of any finds. The BLM authorized officer will, as soon as feasible, have a BLM-permitted paleontologist check out the find and record and collect it if warranted. If ground-disturbing activities cannot be immediately suspended, the operator shall work around or set the discovery aside in a safe place to be accessed by the BLM-permitted paleontologist.

- 16A. Colorado State Statutes CRS 24-80-1301-1305 for Historic, Prehistoric, and Archaeological Resources, and for Unmarked Human Graves. The operator shall comply with Colorado State Statutes CRS 24-80-1301-1305 for Historic, Prehistoric, and Archaeological Resources, and for Unmarked Human Graves.
- 16B. Cultural Education/Discovery. All persons in the area who are associated with this project shall be informed that if anyone is found disturbing historic, archaeological, or scientific resources, including collecting artifacts, the person or persons will be subject to prosecution.

Pursuant to 43 CFR 10.4(g), the BLM authorized officer shall be notified by telephone, with written confirmation, immediately upon the discovery of human remains, funerary items, sacred objects, or objects of cultural patrimony. Further, pursuant to 43 CFR 10.4 (c) and (d), activities shall stop in the vicinity of the discovery, and the discovery shall be protected for 30 days or until notified by the BLM authorized officer to proceed.

If in connection with operations under this contract, the operator, its contractors, their subcontractors, or the employees of any of them discovers, encounters, or becomes aware of any objects or sites of cultural value or scientific interest such as historic ruins or prehistoric ruins, graves or grave markers, fossils, or artifacts, the operator shall immediately suspend all operations in the vicinity of the cultural resource and shall notify the BLM authorized officer of the findings (16 USC 470h-3, 36 CFR 800.112). Operations may resume at the discovery site upon receipt of written instructions and authorization by the BLM authorized officer. Approval to proceed will be based upon evaluation of the resource. Evaluation shall be by a qualified professional selected by the BLM authorized officer from a Federal agency insofar as practicable. When not practicable, the operator shall bear the cost of the services of a non-Federal professional.

Within five working days, the BLM authorized officer will inform the operator as to:

- whether the materials appear eligible for the National Register of Historic Places

- what mitigation measures the holder will likely have to undertake before the site can be used (assuming that *in-situ* preservation is not necessary)
- the timeframe for the BLM authorized officer to complete an expedited review under 36 CFR 800.11, or any agreements in lieu thereof, to confirm through the SHPO State Historic Preservation Officer that the findings of the BLM authorized officer are correct and that mitigation is appropriate

The operator may relocate activities to avoid the expense of mitigation and delays associated with this process, as long as the new area has been appropriately cleared of resources and the exposed materials are recorded and stabilized. Otherwise, the operator shall be responsible for mitigation costs. The BLM authorized officer will provide technical and procedural guidelines for relocation and/or to conduct mitigation. Upon verification from the BLM authorized officer that the required mitigation has been completed, the operator will be allowed to resume construction.

Antiquities, historic ruins, prehistoric ruins, and other cultural or paleontological objects of scientific interest that are outside the authorization boundaries but potentially affected, either directly or indirectly, by the proposed action shall also be included in this evaluation or mitigation. Impacts that occur to such resources as a result of the authorized activities shall be mitigated at the operator's cost, including the cost of consultation with Native American groups.

- 16C. The Native American Graves Protection and Repatriation Act (NAGPRA), requires that if inadvertent discovery of Native American Remains or Objects occurs, activity must cease in the area of discovery, a reasonable effort made to protect the item(s) discovered, and immediate notice made to the BLM Authorized Officer, as well as the appropriate Native American group(s) (IV.C.2). Notice may be followed by a 30-day delay (NAGPRA Section 3(d)). Further actions also require compliance under the provisions of NHPA and the Archaeological Resource Protection Act. Any person who, without a permit, injures, destroys, excavates, appropriates or removes any historic or prehistoric ruin, artifact, object of antiquity, Native American remains, Native American cultural item, or archaeological resources on public lands is subject to arrest and penalty of law (16 USC 433, 16 USC 470, 18 USC 641, 18 USC 1170, and 18 USC 1361).
17. Visual Resources. Production facilities shall be placed to avoid or minimize visibility from travel corridors, residential areas, and other sensitive observation points—unless directed otherwise by the authorized officer due to other resource concerns—and shall be placed to maximize reshaping of cut-and-fill slopes and interim reclamation of the pad.

To the extent practicable, existing vegetation shall be preserved when clearing and grading for pads, roads, and pipelines. The authorized officer may direct that cleared trees and rocks be salvaged and redistributed over reshaped cut-and-fill slopes or along linear features.

Above-ground facilities shall be painted a natural color selected to minimize contrast with adjacent vegetation or rock outcrops. The color shall be specified by the BLM and attached as a COA to individual APDs. Shale Green (5Y 4/2) is the recommended facility color for this location.