

U.S. Department of the Interior
Bureau of Land Management
Glenwood Springs Energy Office
2425 S. Grand Avenue, Suite 101
Glenwood Springs, CO 81601

Statutory Categorical Exclusion, CO140-2008-004

Project: Proposal to Directionally Drill 2 Additional Wells into Federal Leases COC54738 and COC69616 from Existing Fee Pad (L25W) in Middle Mamm Creek Area

Location: T7S, R93W Section 25, NW¼SW¼, 6th PM (L25W Pad)

Proposal: EnCana Oil & Gas (USA) Inc. proposes to directionally drill the following two federal wells on the existing L25W pad located on private land owned by Ben Shideler (described above): Shideler Federal 25-5C well would access Federal lease COC54738 and Shideler Federal 26-8C1 well would access Federal lease COC69616.

The most recent spud date for the six existing fee wells on the L25W pad is 5/15/04. Basic infrastructure (access road, pipelines, etc.) serving the pad has been constructed. See attached Project Map. To accommodate the drilling of two Federal wells and three fee wells on the pad, the pad will undergo a slight expansion along the east side resulting in 0.3 acre of additional disturbance. Total surface disturbance area for the fee pad would be 4.6 acres. Access to the site crosses private lands, thereby restricting public motor vehicle access to the area.

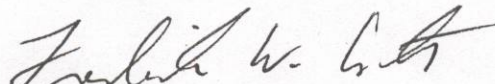
BLM Conditions of Approval: Conditions and stipulations that would be included on the Applications for Permit to Drill (APDs) are attached.

NEPA Compliance: The following category of Categorical Exclusions pursuant to Section 390 of the Energy Policy Act (Act of 2005) applies to this proposal:

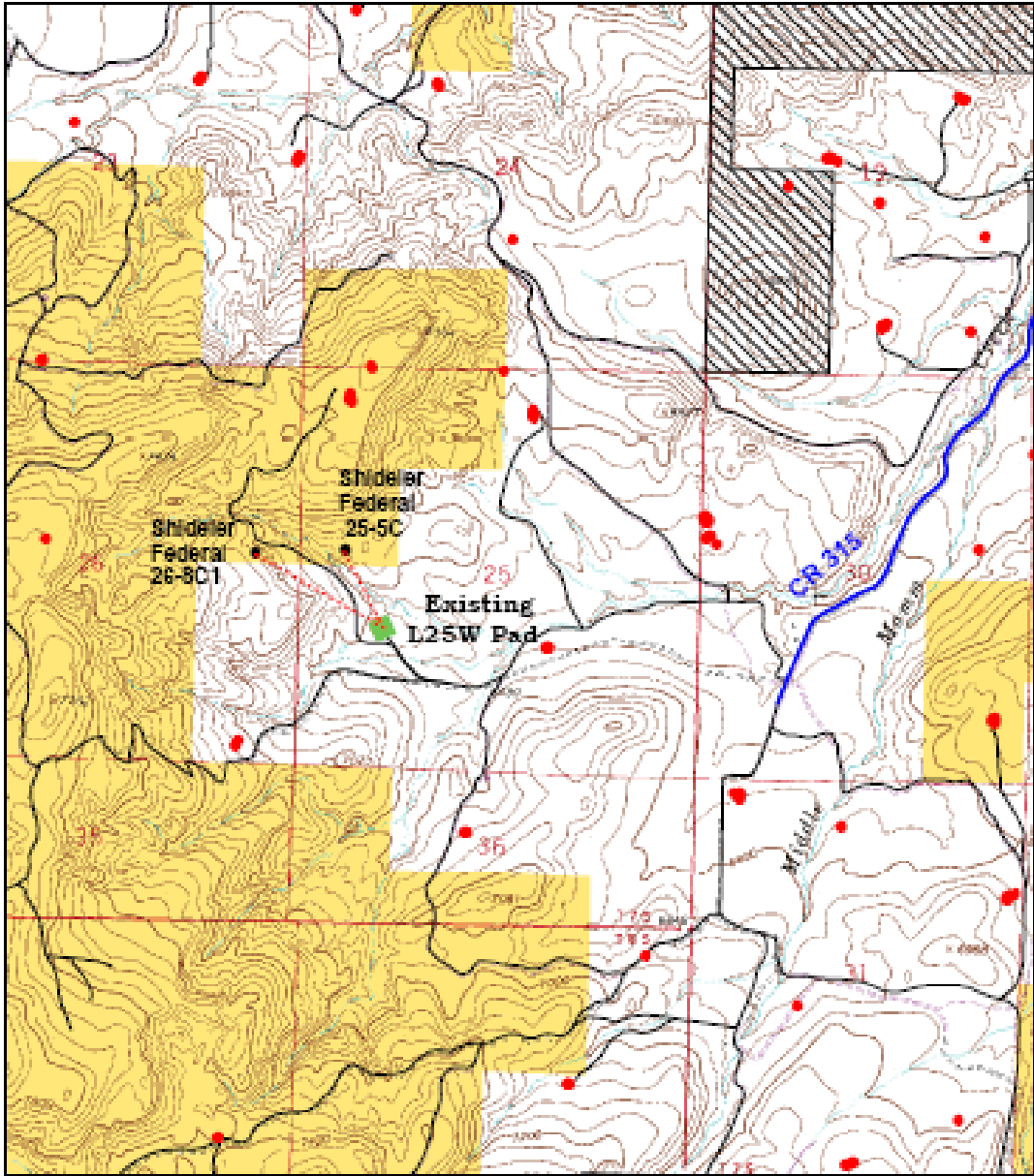
Category #2: "Drilling an oil and gas location or well pad at a site which drilling has occurred within five (5) years prior to the date of spudding the well." The Shideler 25-14 well was spudded on 5/15/04.

Prepared by: Jim Byers, Natural Resource Specialist 11/5/07

Approval: It is my decision to approve the proposed action with the above referenced terms and conditions:


Allen B. Crockett, Ph.D., J.D.
Supervisory Natural Resource Specialist

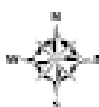
12/20/07
Date



Proposed Wells on Existing L25W Pad

*T7S R93W Sec 25, NW¼SW¼ 6th P.M.
Garfield County, CO*

- Surface Owner: Ben Shideler
- Existing Pad: Green Block
- Proposed Bottomhole: Black Dot
- Exist Road: Solid Black Line



Scale 1: 24,000
10/17/07

Figure 1. Existing L25W Pad Location

CONDITIONS OF APPROVAL
APPLICATION FOR PERMIT TO DRILL

Company/Operator: **EnCana Oil & Gas (USA) Inc**

PAD: L25W				
Well Name	Well No.	Surface Hole Location	Bottom Hole Location	Lease
Shideler Fed	25-5C	NWSW Sec 25 T7S, R93W	SWNW Sec 25 T7S, R93W	COC-54738
Shideler Fed	26-8C1	NWSW Sec 25 T7S, R93W	SENE Sec 26 T7S, R93W	COC-69616

NOTIFICATION REQUIREMENTS

- Location Construction - at least forty-eight (48) hours prior to construction of location and access roads.
- Spud Notice - at least twenty-four (24) hours prior to spudding the well.
- Casing String and Cementing - at least twenty-four (24) hours prior to running casing and cementing all casing strings.
- BOP and Related Equipment Tests - at least twenty-four (24) hours prior to initiating pressure tests.
- First Production-Notice - within five (5) business days after new well begins, or production resumes after well has been off production for more than ninety (90) days.
- Reclamation - At least (24) hours prior to re-shaping the well pad.

For more specific details on notification requirements, please check the Conditions of Approval for Notice to Drill and Surface Use Program.

APD approval is valid for a period of two (2) year from the signature date. An extension period may be granted, if requested, prior to the expiration of the original approval period.

Please contact Steve Ficklin (970) 947-5213 of the Glenwood Springs Energy Office at least 24 hours prior to and after spud.

Please contact **Steve Ficklin (970) 947-5213, Jon Cavanaugh (970) 947-5220 or Ken Trueax (970) 947-5239 of the Glenwood Springs Energy Office** at least 24 hours prior to running the surface and production casing and conducting the BOP test.

DOWNHOLE CONDITIONS OF APPROVAL FOR NOTICE TO DRILL

1. The MINIMUM TOC for the production casing needs to be **at least** 200' above the top of the Mesa Verde formation either during the primary cement job or through remedial cementing.

Well Name	Well No.	Cement TOP MD	Cement TOP TVD
Shideler Fed	25-5C	4677'	4621'
Shideler Fed	26-8C1	5035'	4776'

2. A cement bond log (CBL) will be run from the production casing shoe to **TOC** and shall be utilized to determine the bond quality for the production casing.
3. Any usable water zones encountered below the surface casing shall be isolated and or protected by cementing across the zone. The minimum requirement is to cement from 50 feet above to 50 feet below each usable water zone encountered. Contact BLM – Glenwood Springs, CO upon encountering any usable water zones.
4. In addition to the Onshore Order No. 2 BOP testing requirements, for safety concerns, please test BOP to 250 psi for 5 minutes.

REGULATORY REMINDERS

Approval of this application does not warrant or certify that the applicant holds legal or equitable title to those rights in the subject lease which would entitle the applicant to conduct operations thereon.

All drilling operations, unless otherwise specifically approved in the APD, must be conducted in accordance with Onshore Oil and Gas Order No. 2.

All lease and/or unit operations will be conducted in such a manner that full compliance is made with applicable laws, regulations (43 CFR 3100), Onshore Oil and Gas Orders, and the approved plan of operations. The operator is fully responsible for the actions of his subcontractors.

A copy of the approved application for permit to drill (APD), including the conditions of approval and accompanying surface use plan will be furnished to the field representative by the operator to insure compliance and will be available to authorized personnel at the drillsite whenever active construction or drilling operations are underway.

Be aware fire restrictions may be in effect when location is being constructed and/or when well is being drilled. Contact the appropriate Surface Management Agency for information.

Section 102(b)(3) of the Federal Oil and Gas Royalty Management Act of 1982, as implemented by the applicable provisions of the operating regulations at Title 43 CFR 3162.4-1(c), requires that "not later than the 5th business day after any well begins production on which royalty is due anywhere on a lease site or allocated to a lease site, or resumes production in the case of a well which has been off production for more than 90 days, the operator shall notify the authorized officer by letter or sundry notice, Form 3160-5, or orally to be followed by a letter or sundry notice, of the date on which such production has begun or resumed."

If you fail to comply with this requirement in the manner and time allowed, you shall be liable for a civil penalty of up to \$10,000 per violation for each day such violation continues, not to exceed a maximum of 20 days. See Section 109(c)(3) of the Federal Oil and Gas Royalty Management Act of 1982 and the implementing regulations at Title 43 CFR 3162.4-1(b)(5)(ii).

In the event after-hours approval or notification is necessary, please contact one of the following individuals:

Marty O'Mara	C: 970.319.5837
Petroleum Engineer	W: 970.947.5221

Jon Cavanaugh	W: 970.947.5220
Petroleum Engineering Tech.	C: 970.319.7887

Ken Trueax	W: 970.947.5239
Petroleum Engineering Tech.	

Steve Ficklin	W: 970.947.5213
Lead Petroleum Eng Tech.	C: 970.319.2509

BLM Fax: 970.947.5267

EPA'S LIST OF NONEXEMPT EXPLORATION AND PRODUCTION WASTES

While the following wastes are nonexempt, they are not necessarily hazardous.

- Unused fracturing fluids or acids
- Gas plant cooling tower cleaning wastes
- Painting wastes
- Oil and gas service company wastes, such as empty drums, drum rinsate, vacuum truck rinsate, sandblast media, painting wastes, spent solvents, spilled chemicals, and waste acids
- Vacuum truck and drum rinsate from trucks and drums, transporting or containing nonexempt waste
- Refinery wastes
- Liquid and solid wastes generated by crude oil and tank bottom reclaimers
- Used equipment lubrication oils
- Waste compressor oil, filters, and blowdown
- Used hydraulic fluids
- Waste solvents
- Waste in transportation pipeline-related pits
- Caustic or acid cleaners
- Boiler cleaning wastes
- Boiler refractory bricks
- Incinerator ash
- Laboratory wastes
- Sanitary wastes
- Pesticide wastes
- Radioactive tracer wastes
- Drums, insulation and miscellaneous solids.

SURFACE USE CONDITIONS OF APPROVAL

1. Well Spudding Deadline. If the well has not been spudded by May 15, 2009 (five years after spud date for Shideler 25-14 well), this APD will expire and the operator is to cease all operations related to preparing to drill the well.

If, after 1 year from spudding the initial well, or 1 year after spudding any successive wells, there are no additional wells actually drilled after the last spud date, the operator will be required to implement and complete standard interim reclamation practices as identified under Reclamation section in these surface Conditions of Approval OR submit proposed best management practices to be approved by the Authorized Officer that would be implemented on the “open” pad to control storm water drainage, weed control, wildlife protection measures, dust abatement plan and/or visual resource concerns.

2. Facility Colors. The paint color to be used on all surface facilities including the metal containment rings surrounding the tank batteries and pipeline risers is Shale Green (5Y 4/2).

3. Road Maintenance. Operator will be responsible for providing timely year-round road maintenance and cleanup on the access road. A regular schedule for maintenance will include, but not be limited to, blading, ditch and culvert cleaning, road surface replacement and dust abatement.

4. Dust Abatement. The operator shall implement dust abatement measures as needed or directed by the BLM authorized officer. The level and type of treatment (watering or application of various dust agents, surfactants, and road surfacing material) may be changed in intensity and must be approved by the BLM authorized officer. Magnesium chloride or other chemical suppressant shall not be applied within 100 feet of any drainage.

5. Paleontological Resources. All persons associated with operations under this authorization shall be informed that any objects or sites of paleontological or scientific value, such as vertebrate or scientifically important invertebrate fossils, shall not be damaged, destroyed, removed, moved, or disturbed. If in connection with operations under this authorization any of the above resources are encountered the operator shall immediately suspend all activities in the immediate vicinity of the discovery that might further disturb such materials and notify the BLM authorized officer of the findings. The discovery must be protected until notified to proceed by the BLM authorized officer.

As feasible, the operator shall suspend ground-disturbing activities at the discovery site and immediately notify the BLM authorized officer of any finds. The BLM authorized officer will, as soon as feasible, have a BLM-permitted paleontologist check out the find and record and collect it if warranted. If ground-disturbing activities cannot be immediately suspended, the operator shall work around or set the discovery aside in a safe place to be accessed by the BLM-permitted paleontologist.

Contact Karen Conrath, GSEO Geologist, at 970-947-5235 or karen_conrath@blm.gov.

6. Cultural Education/Discovery. All persons in the area who are associated with this project shall be informed that if anyone is found disturbing historic, archaeological, or scientific resources, including collecting artifacts, the person or persons will be subject to prosecution.

Pursuant to 43 CFR 10.4(g), the BLM authorized officer shall be notified by telephone, with written confirmation, immediately upon the discovery of human remains, funerary items, sacred objects, or objects of cultural patrimony. Further, pursuant to 43 CFR 10.4 (c) and (d), activities shall stop in the vicinity of the discovery, and the discovery shall be protected for 30 days or until notified by the BLM authorized officer to proceed.

If in connection with operations under this contract, the operator, its contractors, their subcontractors, or the employees of any of them discovers, encounters, or becomes aware of any objects or sites of cultural value or scientific interest such as historic ruins or prehistoric ruins, graves or grave markers, fossils, or artifacts, the operator shall immediately suspend all operations in the vicinity of the cultural resource and shall notify the BLM authorized officer of the findings (16 USC 470h-3, 36 CFR 800.112). Operations may resume at the discovery site upon receipt of written instructions and authorization by the BLM authorized officer. Approval to proceed will be based upon evaluation of the resource. Evaluation shall be by a qualified professional selected by the BLM authorized officer from a Federal agency insofar as practicable. When not practicable, the operator shall bear the cost of the services of a non-Federal professional.

Within five working days, the BLM authorized officer will inform the operator as to:

- whether the materials appear eligible for the National Register of Historic Places
- what mitigation measures the holder will likely have to undertake before the site can be used (assuming that *in-situ* preservation is not necessary)
- the timeframe for the BLM authorized officer to complete an expedited review under 36 CFR 800.11, or any agreements in lieu thereof, to confirm through the SHPO State Historic Preservation Officer that the findings of the BLM authorized officer are correct and that mitigation is appropriate

The operator may relocate activities to avoid the expense of mitigation and delays associated with this process, as long as the new area has been appropriately cleared of resources and the exposed materials are recorded and stabilized. Otherwise, the operator shall be responsible for mitigation costs. The BLM authorized officer will provide technical and procedural guidelines for relocation and/or to conduct mitigation. Upon verification from the BLM authorized officer that the required mitigation has been completed, the operator will be allowed to resume construction.

Antiquities, historic ruins, prehistoric ruins, and other cultural or paleontological objects of scientific interest that are outside the authorization boundaries but potentially affected, either directly or indirectly, by the proposed action shall also be included in this evaluation or mitigation. Impacts that occur to such resources as a result of the authorized activities shall be mitigated at the operator's cost, including the cost of consultation with Native American groups.

Any person who, without a permit, injures, destroys, excavates, appropriates or removes any historic or prehistoric ruin, artifact, object of antiquity, Native American remains, Native American cultural item, or archaeological resources on public lands is subject to arrest and penalty of law (16 USC 433, 16 USC 470, 18 USC 641, 18 USC 1170, and 18 USC 1361).

7. Migratory Birds. It shall be the responsibility of the operator to comply with the Migratory Bird Treaty Act with respect to "take" of migratory bird species. "Take" means to harass, harm, pursue, hunt, shoot, wound, kill, trap, capture, or collect, or to attempt to engage in any such conduct. The operator shall prevent use by migratory birds of reserve pits, produced water pits, and evaporation pits, that store or are expected to store fluids which may pose a risk to such birds (e.g., migratory waterfowl, shorebirds, wading birds, and raptors) during completion and after completion activities have ceased. Several established methods to prevent bird access are known to work. Methods may include but are not limited to netting, the use of bird-balls, or other alternative methods that effectively prevent bird access/use. Regardless of the method used, it should be applied within 24 hours after completion activities have begun. All mortality or injury to species protected by the Migratory Bird Treaty Act shall be reported immediately to the BLM project lead.

8. Reclamation. Reclamation goals, objectives, timelines, measures, and monitoring methods for final reclamation of oil and gas disturbances are described in Appendix I (Surface Reclamation) of the 1998 Draft Supplemental EIS (DSEIS). The specific measures described below shall be followed during interim reclamation of disturbed surfaces associated with well pads, access roads, and pipelines. These measures, except seedbed preparation, shall also apply to temporary reclamation of topsoil storage piles and surfaces that are subject to interim reclamation but not scheduled to undergo interim reclamation for more than 1 year.

a. Seedbed Preparation. For interim reclamation, all slopes shall be reshaped prior to seedbed preparation. Initial seedbed preparation shall consist of backfilling, leveling, and ripping all areas to be seeded to a minimum depth of 18 inches with a furrow spacing of 2 feet, followed by recontouring the surface and then spreading the stockpiled topsoil evenly. Prior to seeding, the seedbed shall be scarified and left with a rough surface. No depressions shall be left that would trap water and form ponds. Final seedbed preparation shall consist of contour cultivating to a depth of 4 to 6 inches within 24 hours prior to seeding. NOTE: Seedbed preparation is not required for topsoil storage piles or other areas of temporary reclamation.

Requests for use of soil amendments, including basic product information, shall be submitted to the BLM for approval.

b. Seed Mixes. Selection of seed to be used in temporary or interim reclamation shall comply with the menu-based seed mixes in the letter provided to oil and gas operators dated April 16, 2007. For private surfaces, the menu-based seed mixes are recommended, but the landowner would have ultimate authority over the seed mix to be used in reclamation. The seed shall be certified free of noxious weeds. Seed may contain up to 2.0 percent of "other crop" seed by weight, including the seed of other agronomic crops and native plants; however, a lower percent of other crop seed is recommended. Seed tags or other official documentation shall be supplied to the BLM Glenwood Springs Energy Office Ecologist (Beth Brenneman, 970-947-5232 or beth_brenneman@blm.gov) at least 14 days before the date of proposed seeding for acceptance. Seed that does not meet the above criteria shall not be applied to public lands.

c. Seeding Procedures. Seeding shall be conducted no more than 24 hours following completion of final seedbed preparation. A seed mix consistent with BLM standards in terms of species and seeding rate for the specific habitat type shall be used on all BLM lands affected by the project (see Attachments 1 and 2 of the letter provided to operators dated April 16, 2007).

Where practicable, seed shall be installed by drill-seeding to a depth of 0.25 to 0.5 inch. Where drill-seeding is impracticable, seed may be installed by broadcast-seeding at twice the drill-seeding rate, followed by raking or harrowing to provide 0.25 to 0.5 inch of soil cover. Hydroseeding and hydromulching may be used in temporary reclamation or in areas where drill-seeding or broadcast-seeding/raking are impracticable. Hydroseeding and hydromulching must be conducted in two separate applications to ensure adequate contact of seeds with the soil.

If interim revegetation is unsuccessful, the operator shall implement subsequent reseeding until interim reclamation standards are met. Requirements for reseeding of unsuccessful temporary reclamation will be considered on a case-by-case basis.

d. Mulch. Mulch shall be applied within 24 hours following completion of seeding. In areas of interim reclamation that used drill-seeding or broadcast-seeding/raking, mulch shall consist of crimping certified weed-free straw or certified weed-free native grass hay into the soil. Hydromulching may be used in areas of interim reclamation where crimping is impracticable, in areas of interim reclamation that were hydroseeded, and in areas of temporary reclamation regardless of seeding method.

NOTE: As an exception to this provision, mulch is not required in areas where erosion potential mandates use of a biodegradable erosion-control blanket (straw matting).

e. Erosion Control. Cut-and-fill slopes shall be protected against erosion with the use of water bars, lateral furrows, or other measures approved by the authorized officer. Biodegradable straw matting, bales or wattles of weed-free straw or weed-free native grass hay, or well-anchored fabric silt fence shall be used on cut-and-fill slopes and along drainages to protect against soil erosion. Additional BMPs shall be employed as necessary to reduce erosion and offsite transport of sediment.

f. Site Protection. The pad shall be fenced to BLM standards to exclude livestock grazing for the first two growing seasons or until seeded species are firmly established, whichever comes later. The seeded species will be considered firmly established when at least 50% of the new plants are producing seed. The authorized officer will approve the type of fencing.

g. Monitoring. The operator shall conduct annual monitoring surveys of reclaimed areas and shall submit an annual monitoring report to the authorized officer by December 31 of each year. The monitoring program shall use the four Reclamation Categories defined in Appendix I of the 1998 DSEIS to assess progress toward reclamation objectives. The annual report shall document whether attainment of reclamation objectives appears likely. If one or more objectives appear unlikely to be achieved, the report shall identify appropriate corrective actions. Upon review and approval of the report by the BLM, the operator shall be responsible for implementing the corrective actions or other measures specified by the authorized officer.

Contact Beth Brenneman, Glenwood Springs Energy Office Ecologist, at 970-947-5232 or beth_brenneman@blm.gov.

9. Weed Control. The Operator shall regularly monitor and promptly control noxious weeds or other undesirable plant species as set forth in the Glenwood Springs Energy Office *Noxious and Invasive Weed Management Plan for Oil and Gas Operators*, dated March 2007. A Pesticide Use Proposal (PUP) must be approved by the BLM prior to the use of herbicides. Contact Beth Brenneman, Glenwood Springs Energy Office Ecologist, at 970-947-5232 or beth_brenneman@blm.gov.