



United States Department of the Interior

BUREAU OF LAND MANAGEMENT

San Luis Valley Public Lands Center

1803 W. Hwy 160

Monte Vista, Colorado 81144

<http://www.co.blm.gov>



August 22, 2011

In Reply Refer to:

2800

COC 74808

Friends of the San Luis Valley Public Lands Center:

The San Luis Valley Public Lands Center is beginning an Environmental Assessment (EA) for a proposed power line upgrade that will cross lands managed by the Bureau of Land Management (BLM), the United States Fish and Wildlife Service, as well as privately owned lands. The San Luis Valley Rural Electric Cooperative Inc. has proposed to upgrade a 69kV power line to an 115kV. Please see the attached map for locations. The height and structure of the proposed poles will not change significantly from the current structures.

The BLM Divide Field Office Manager is the responsible official who will decide whether to allow the upgrade of the power line on the BLM. The United States Fish and Wildlife Service and The Rural Utility Service are also cooperators on this Environmental Assessment. We are requesting your comments to assist us in determining issues relevant to this analysis. Comments should be as specific as possible, and should identify issues or concerns relating to this proposal.

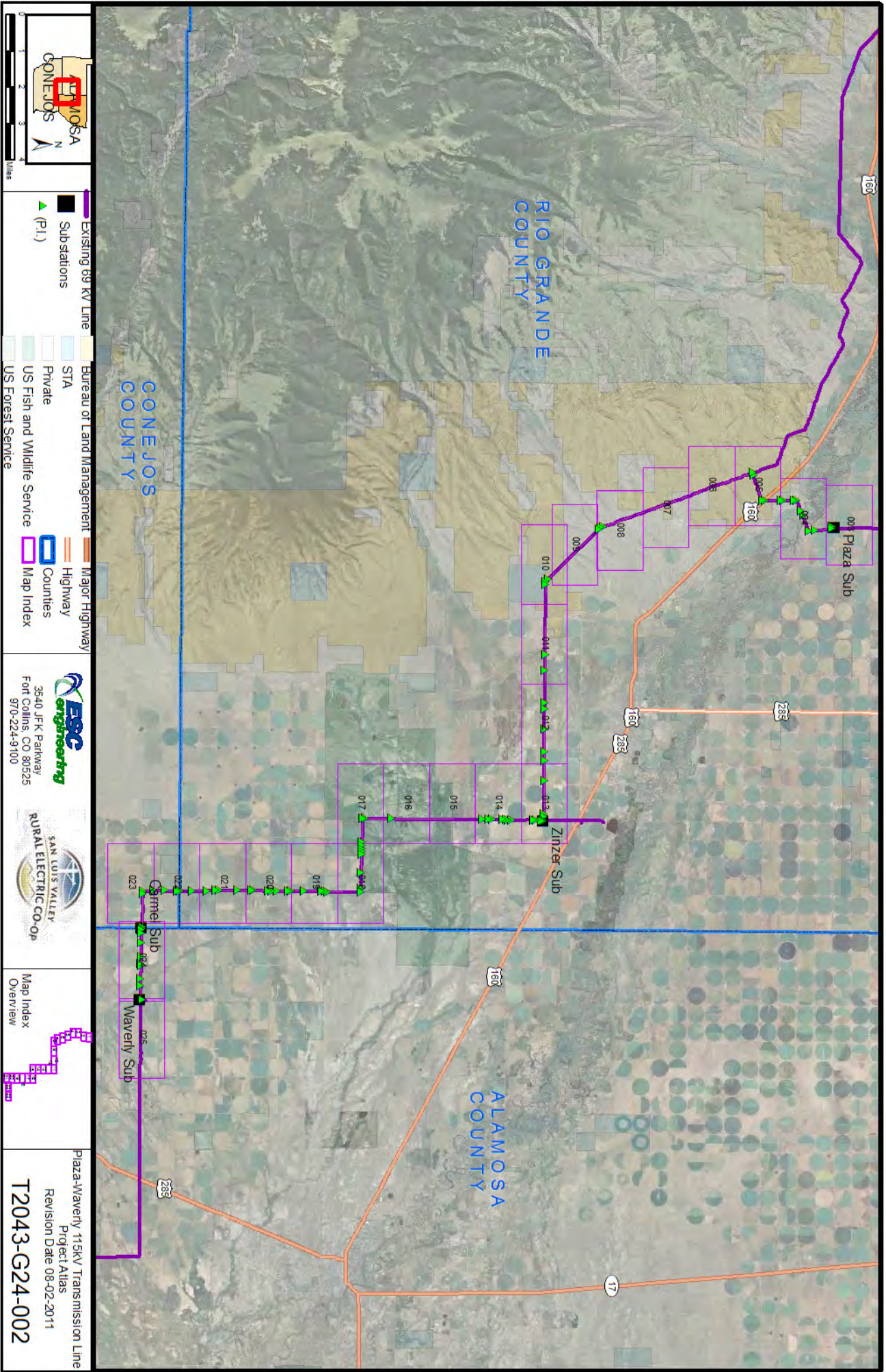
We encourage you to submit any input you might have about this proposal or the analysis area no later than September 20, 2011. Please mail your comments to:

Joseph Vieira, Project Manager
San Luis Valley Public Lands Center
1803 West Hwy 160
Monte Vista, CO 81144

Scoping comments may also be submitted electronically to the following address:

slvplc_comments@blm.gov

If you have questions or would like additional information, please contact Joseph Vieira, San Luis Valley Public Lands Center, Project Manager, at 719-852-6213.



- Existing 89 KV Line
- Substations
- (P.I.)
- Bureau of Land Management
- STA
- Private
- US Fish and Wildlife Service
- US Forest Service
- Major Highway
- Highway
- Counties
- Map Index

ES&C engineering
 3540 JFK Parkway
 Fort Collins, CO 80525
 970-224-9100

SAN LUIS VALLEY RURAL ELECTRIC CO-OP



Plaza-Waverly 115kV Transmission Line
 Project Atlas
 Revision Date 08-02-2011
T2043-G24-002