



## United States Department of the Interior

### BUREAU OF LAND MANAGEMENT

Grand Junction Field Office  
2815 H Rd  
Grand Junction, Colorado 81506  
[www.co.blm.gov/gjra/gjra.html](http://www.co.blm.gov/gjra/gjra.html)



### **August 2012 Oil and Gas Lease Sale Nomination Public Comment Period December 5, 2011 – January 4, 2012**

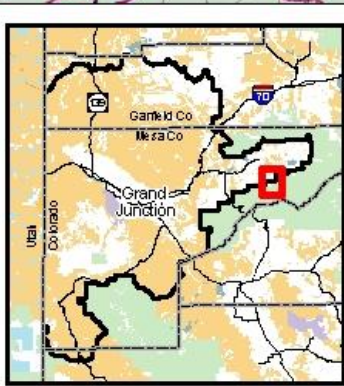
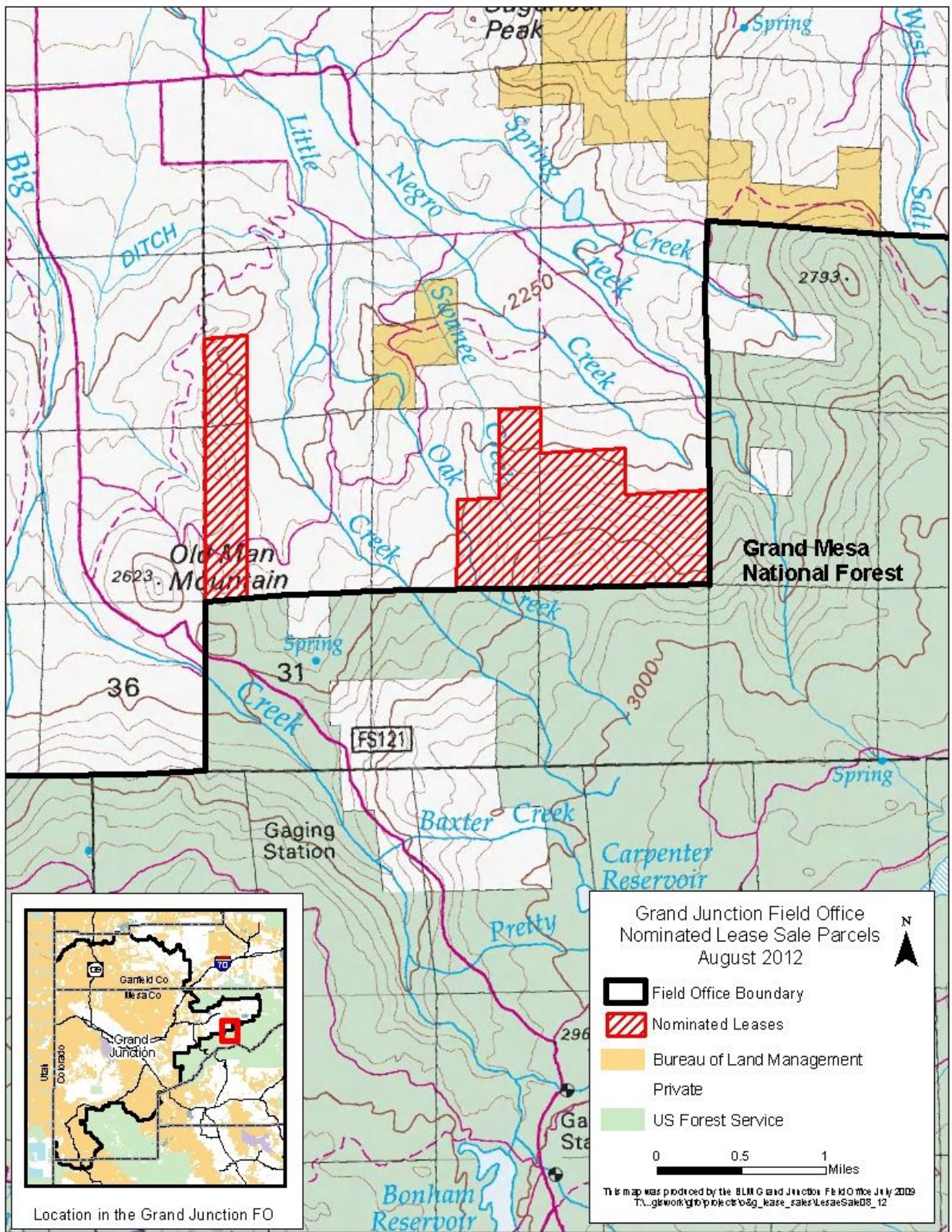
Industry has nominated one parcel within the Grand Junction Field Office (number 6204) to be offered at public auction in the August 2012 Colorado Competitive Oil and Gas Lease Sale. The parcel nominated for lease is a total of approximately 921 acres of federal mineral estate underlying privately owned surface (split estate). The lease would be issued subject to stipulations identified in the 1987 Grand Junction Resource Management Plan (BLM).

The BLM Grand Junction Field Office is beginning to prepare an Environmental Assessment (EA) to analyze the impacts of leasing the nominated parcel. BLM may choose to: a) offer all of the nominated parcel for lease sale, b) offer a subset of the parcel for lease sale, or c) not lease the parcel at this time.

The parcel is located approximately 5 miles southeast of the Town of Collbran and 30 miles northeast of the City of Grand Junction in Mesa County, Colorado at the following legal description (see attached maps):

T. 10S., R 94W., 6TH PM  
Sec. 19: Lot 3,4;  
Sec. 28: Lot 1-10;  
Sec. 29: Lot 1-6;  
Sec. 30: Lot 1-4;

This is a public comment period to identify preliminary issues with the nomination. Your comments will be most useful if received by Jan. 4, 2012. There will be additional opportunities for public involvement during the preparation of the EA. Please submit comments to [BLM\\_CO\\_GJ\\_Public\\_Comments@blm.gov](mailto:BLM_CO_GJ_Public_Comments@blm.gov) or 2815 H Road, Grand Junction, CO 81506. If you have questions, please contact Collin Ewing at (970) 244-3000.



Location in the Grand Junction FO

