

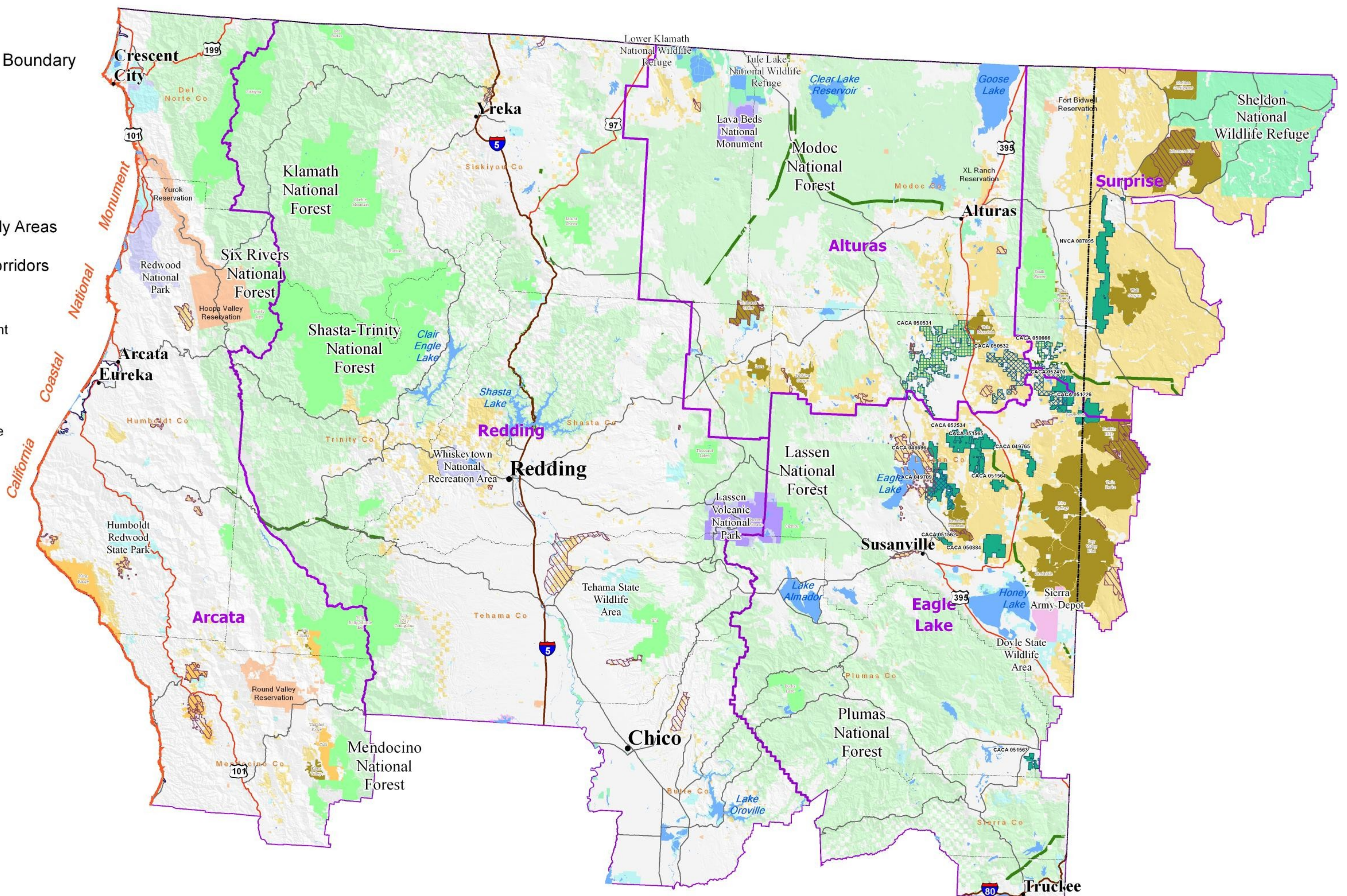
Northern California District Offices

Renewable Energy Projects and Utility Corridors

Projects as of April 2, 2012

Legend

-  Wind Energy Projects Type III (Pending)
-  Wind Energy Projects Type II (Authorized)
-  Wind Energy Projects Type II (Pending)
-  State Boundary
-  BLM Field Offices
-  County Lines
-  National Monument Boundary
-  ACEC
-  BLM Wilderness
-  NPS Wilderness
-  USFS Wilderness
-  BLM Wilderness Study Areas
-  Section 368 Utility Corridors
- Land Status**
-  Bureau of Land Management
-  US Forest Service
-  National Park Service
-  Bureau of Reclamation
-  US Fish and Wildlife Service
-  Military
-  Indian Trust Assets
-  Other Federal
-  State
-  County/State/Regional
-  Private/Other
-  Perennial Water
- Roads**
-  Interstate Highway
-  State Highway
-  U.S. Highway



Northern California District



 **US Department of the Interior**
BUREAU OF LAND MANAGEMENT
 California State Office
 Sacramento, California
 (916) 978-4400
 www.ca.blm.gov

The Bureau of Land Management makes no representations or warranties regarding the accuracy or completeness of this map. This map does not address encroachments or questions of location, boundary, and area, which an accurate survey may disclose. This map is intended and is to be used as an illustration only. The map is merely representational, it and the data from which it was derived are not binding on the Bureau and may be revised at any time in the future. The Bureau of Land Management shall not be liable under any circumstances for any direct, indirect, special, incidental or consequential damages with respect to any claim by any user or any third party on account of or arising from the use of this map or the data from which it was derived.

This map cannot be made Section 508 compliant. For help with its data or for more information, please contact the BLM California State Office at (916) 978-4610.

