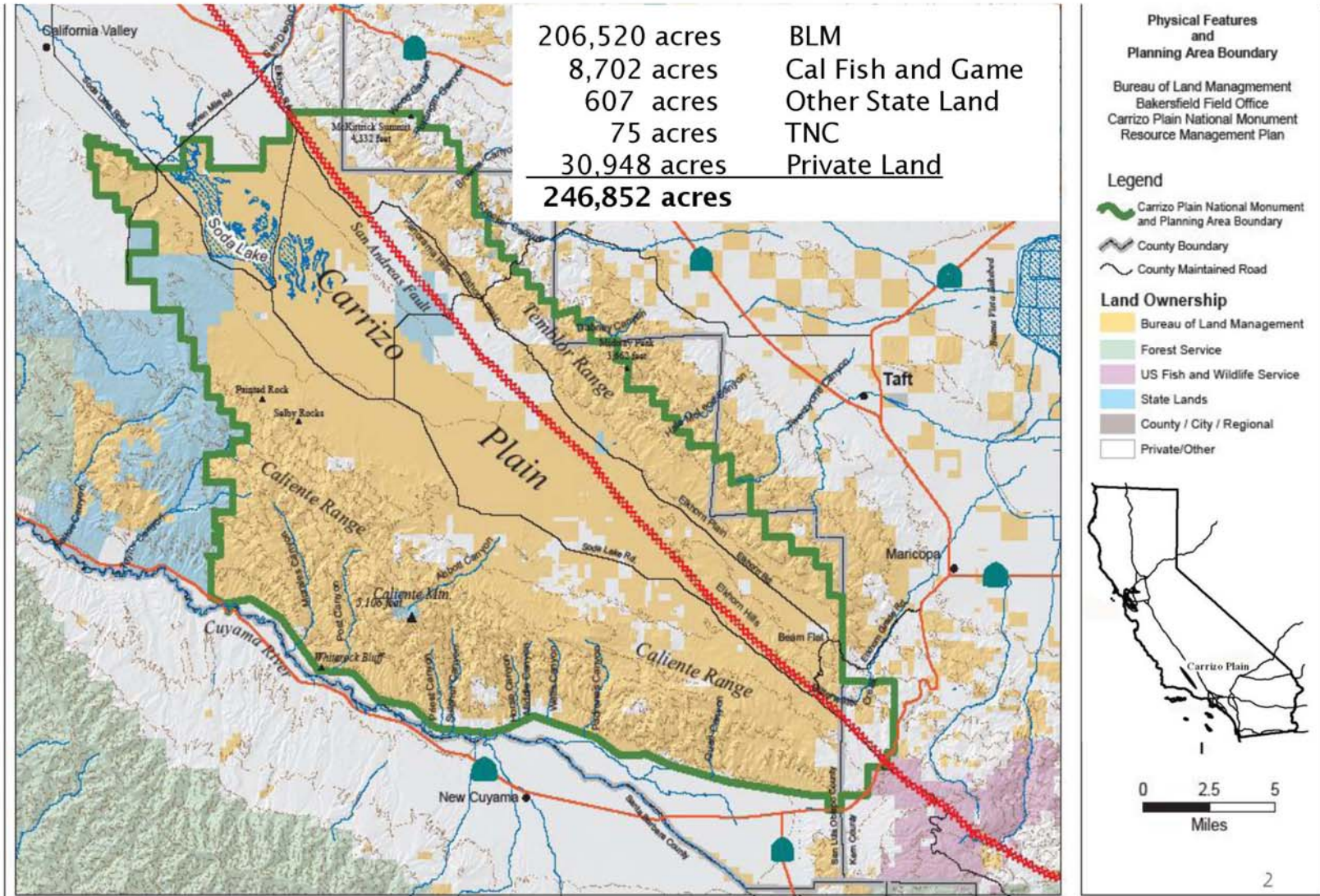


# **Carrizo Plain National Monument**

## **Draft Resource Management Plan and Environmental Impact Statement**

# Carrizo Plain National Monument



# Background

Caliente RMP (1997)

Carrizo Plain Natural Area Management Plan (1996/1999)

RMP/EIS

- Builds on the previous Natural Area plan (1996)

- Incorporates National Monument Proclamation guidance

- Includes planning and implementation level decisions.

# Coordination

## Since 2007

Extensive coordination, involvement, and support from general public, diverse interest groups, Native Americans, and managing partners (California Dept. Fish and Game and The Nature Conservancy)

Overall development and support from the Monument Advisory Committee (MAC) with county, ranching, and Native American representation.

- Three scoping meetings
- Six MAC meetings
- Three public meetings on draft

# Proclamation Sideboards

Protect significant resources

- Biological
- Cultural
- Geological
- Soda Lake

Withdrawn from mineral entry

Subject to valid existing rights

Prohibits cross country off highway vehicle travel

# Public Scoping Themes

- Maintain undeveloped character
- Protect and restore habitat and native species
- Preserve unique and world-class cultural resources
- Allow public access while protecting objects of the Monument
- Use grazing as a vegetation management tool
- Disallow new oil and gas development due to risk of resource damage

# Plan Alternatives

***Alternative 1*** less intensive management and limited public use.

***Alt. 2 (proposed)*** balance protection of Monument resources with compatible public uses.

***Alt. 3*** intensive management -broader array and higher levels of public use and access while still retaining rustic characteristics.  
More active biological restoration.

***Alt. 4*** “no action” –continue management under Caliente RMP and CPNA Plan.

***The range of alternatives is constrained by Proclamation direction.***

# Responses to Draft

- Monument Advisory Committee support
- Managing partners support
- General public support
- Positive media

“It’s the right plan in the right place at the right time”

San Luis Obispo Tribune 02/01/09

“Today everyone involved ... is satisfied with the progress”

San Luis Obispo New Times 05/13/09

“Land Bureau on right track for Carrizo”

San Luis Obispo Tribune 02/04/09

# Proposed Plan

- Focus on native species/T&E habitat and regional conservation
- Maintain undeveloped natural and unique values
- Identify core areas for endangered species management
- Maintain and restore mosaic of natural communities
- Engage Native Americans in protecting traditional use areas
- Foster public uses that are compatible with resource protection
- Cooperatively manage with partners and other agencies
- Promote scientific research and monitoring
- Accommodate valid existing rights

# Proposed RMP

## Changes from Draft

Limited revisions based on public comment on Draft RMP

- 13,181 additional acres managed for wilderness character
- Only street-legal vehicles on designated routes –No OHVs (provisions for handicapped)
- Clarifying language on grazing

# Next Steps

- Prepare Proposed RMP/Final EIS July 2009
- Protest period (30 days) / Governor's Consistency Review (60 days) end September 2009
- Protest Resolution November 2009
- Sign ROD late December 2009
- Implement Final RMP