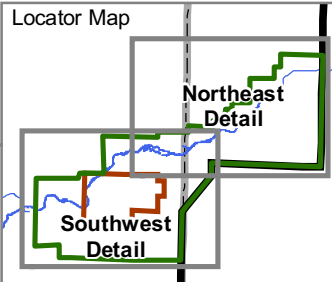
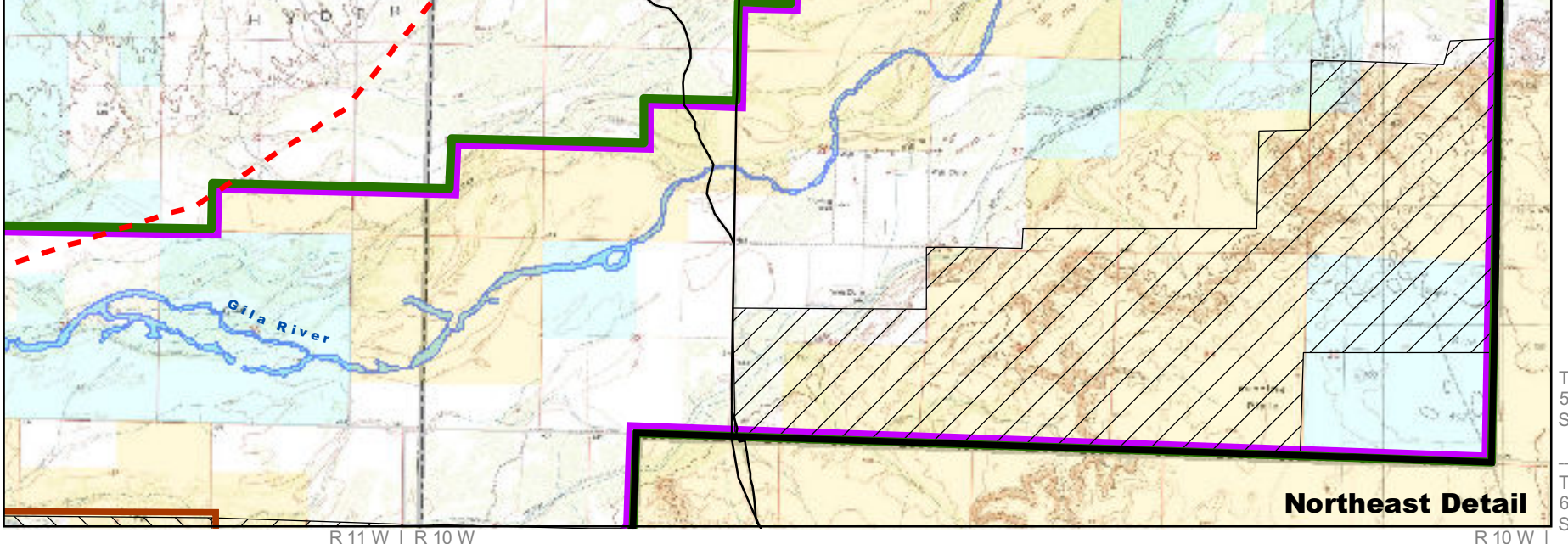


Legend

- Yuma Field Office Boundary
- County Boundary
- Main Access Route
- Secondary Paved Road
- National Historic Trail
- Sears Point Area of Critical Environmental Concern (ACEC)
- Core Area
- Management Prescriptions (28,500 acres)
 - Limited Equestrian Use
 - Route Pull-off Prohibited
 - Surface Occupancy Restrictions May Apply
- Management Prescriptions (4,900 acres)
 - New Withdrawal from Mineral Entry
- Management Prescriptions (3,700 acres)
 - Day-Use Only
 - Existing Withdrawal from Mineral Entry
 - Firewood Collection Prohibited
- Bureau of Land Management
- State of Arizona
- Private - Other
- Closed OHV Management Area (1,400 acres)

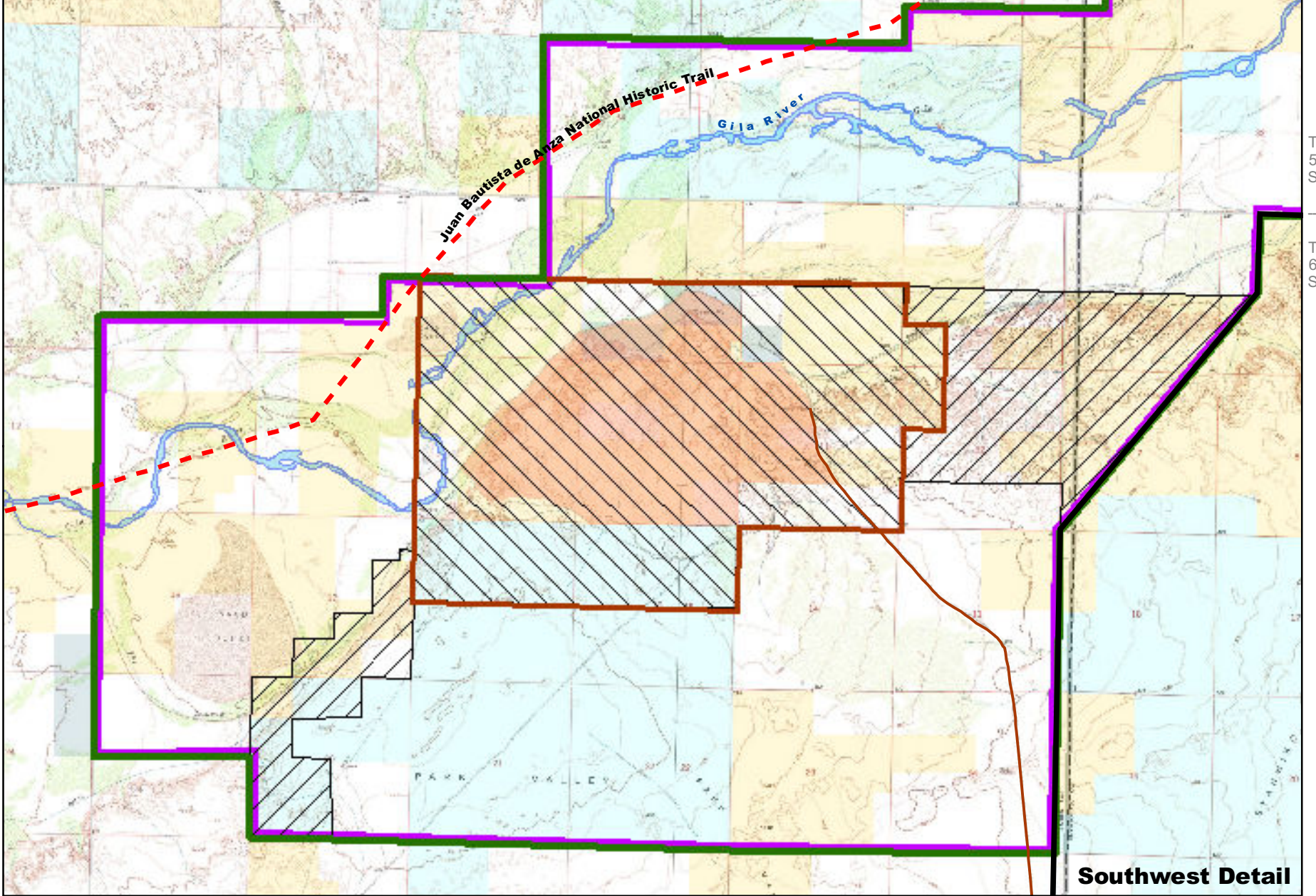


USGS 7.5 minute topographic map series, Agua Caliente, Aztec NW, Hyder, Oatman Mtn & Sentinel Pk quadrangles



R 11 W | R 10 W

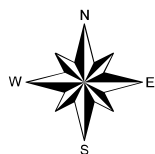
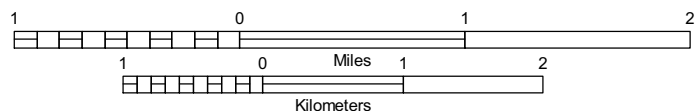
R 10 W |



R 12 W | R 11 W

R 11 W | R 10 W

YUMA FIELD OFFICE RESOURCE MANAGEMENT PLAN



**Map 2-1e-3: Special Designations
Alternative E - Sears
Point ACEC Detail**

U.S. DEPARTMENT OF THE INTERIOR
Bureau of Land Management
Yuma Field Office
April 2008



The Bureau of Land Management makes no warranties, implied or expressed, with respect to information shown on this map.