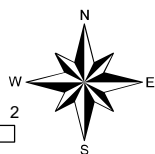
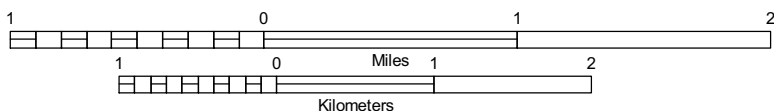


Legend

- Bureau of Land Management
- State of Arizona
- US Fish and Wildlife Service
- Bureau of Land Management Wilderness Area (Withdrawn from Mineral Entry)
- Dripping Springs Area of Critical Environmental Concern (ACEC)
- Core Area
- Closed OHV Management Area (400 acres)
- Management Prescriptions (11,700 acres)
 - Firewood Collection Prohibited
 - Limited Equestrian Use
 - Route Pull-off Prohibited
 - Surface Occupancy Restrictions May Apply
- Management Prescriptions (640 acres)
 - Withdrawn from Mineral Entry
 - Day-use Only

USGS 7.5 minute topographic map series, Crystal Hill, Plomosa Pass, Quartzsite & South of Quartzsite quadrangles

**YUMA FIELD OFFICE
RESOURCE MANAGEMENT PLAN**



U.S. DEPARTMENT OF THE INTERIOR
Bureau of Land Management
Yuma Field Office
April 2008



**Map 2-1e-2: Special Designations
Alternative E - Dripping
Springs ACEC Detail**

The Bureau of Land Management makes no warranties, implied or expressed, with respect to information shown on this map.