

Alternative A Federal Mineral Estate

Phoenix South and Sonoran Desert
National Monument RMPs/EIS

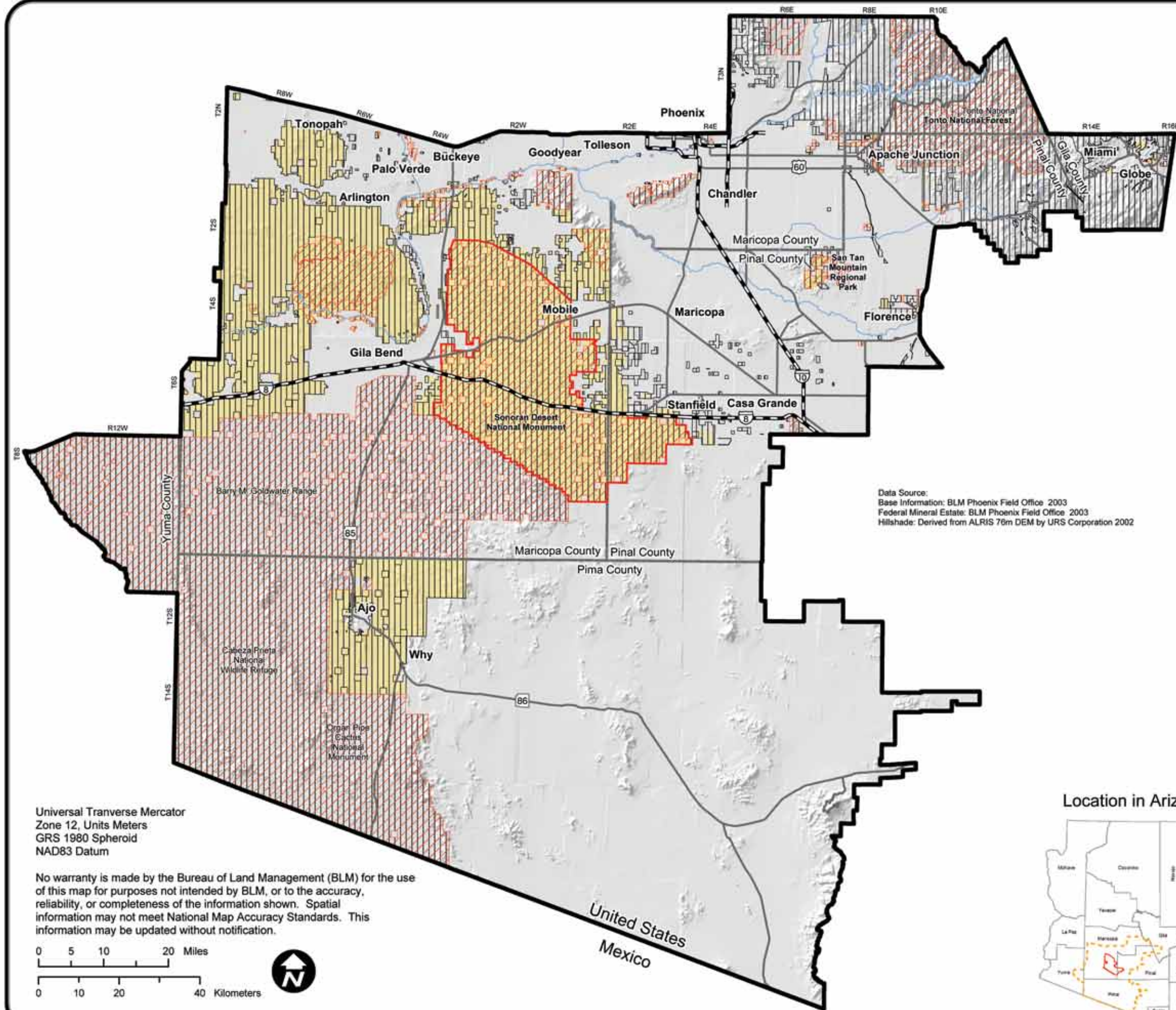
Legend

Federal Mineral Estate

- Open to Mineral Development
- Not Open to Mineral Development

Surface Management

- Bureau of Land Management
- Other Surface Managers



Data Source:
Base Information: BLM Phoenix Field Office 2003
Federal Mineral Estate: BLM Phoenix Field Office 2003
Hillshade: Derived from ALRIS 76m DEM by URS Corporation 2002

Location in Arizona



General Reference

- County Boundaries
- Interstate
- State Routes
- Rivers

Planning Areas

- Phoenix South
- Sonoran Desert National Monument

Map Produced : January 2005



Universal Transverse Mercator
Zone 12, Units Meters
GRS 1980 Spheroid
NAD83 Datum

No warranty is made by the Bureau of Land Management (BLM) for the use of this map for purposes not intended by BLM, or to the accuracy, reliability, or completeness of the information shown. Spatial information may not meet National Map Accuracy Standards. This information may be updated without notification.

