

Mineral Materials Potential

Lower Sonoran and Sonoran Desert National Monument Draft RMP/EIS

Non-BLM Lands Salable Minerals Sites/Operations

- Decorative Rock: Granite, Volcanic, Stone
- Sand and Gravel

BLM Lands Salable Minerals Sites/Operations

- ◆ Crushed Stone and Related Products
- ◆ Sand & Gravel and Related Products

Salable Mineral Resource Potential

- ▨ Areas with Potential for Sand & Gravel and Related Resources
- ▨ Areas with Potential for Crushed Stone and Related Resources

Planning Areas

- ▭ Lower Sonoran
- ▭ Sonoran Desert National Monument

Surface Management

- ▨ Bureau of Land Management
- ▨ Bureau of Land Management Wilderness

General Reference

- ▭ County Boundary
- Interstate
- State Route
- River

No warranty is made by the Bureau of Land Management (BLM) for the use of this map for purposes not intended by BLM, or to the accuracy, reliability, or completeness of the information shown. Spatial information may not meet National Map Accuracy Standards. This information may be updated without notification.

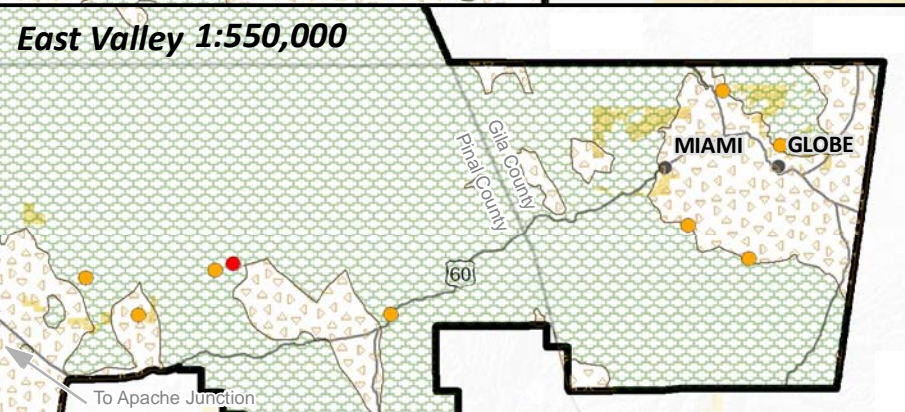
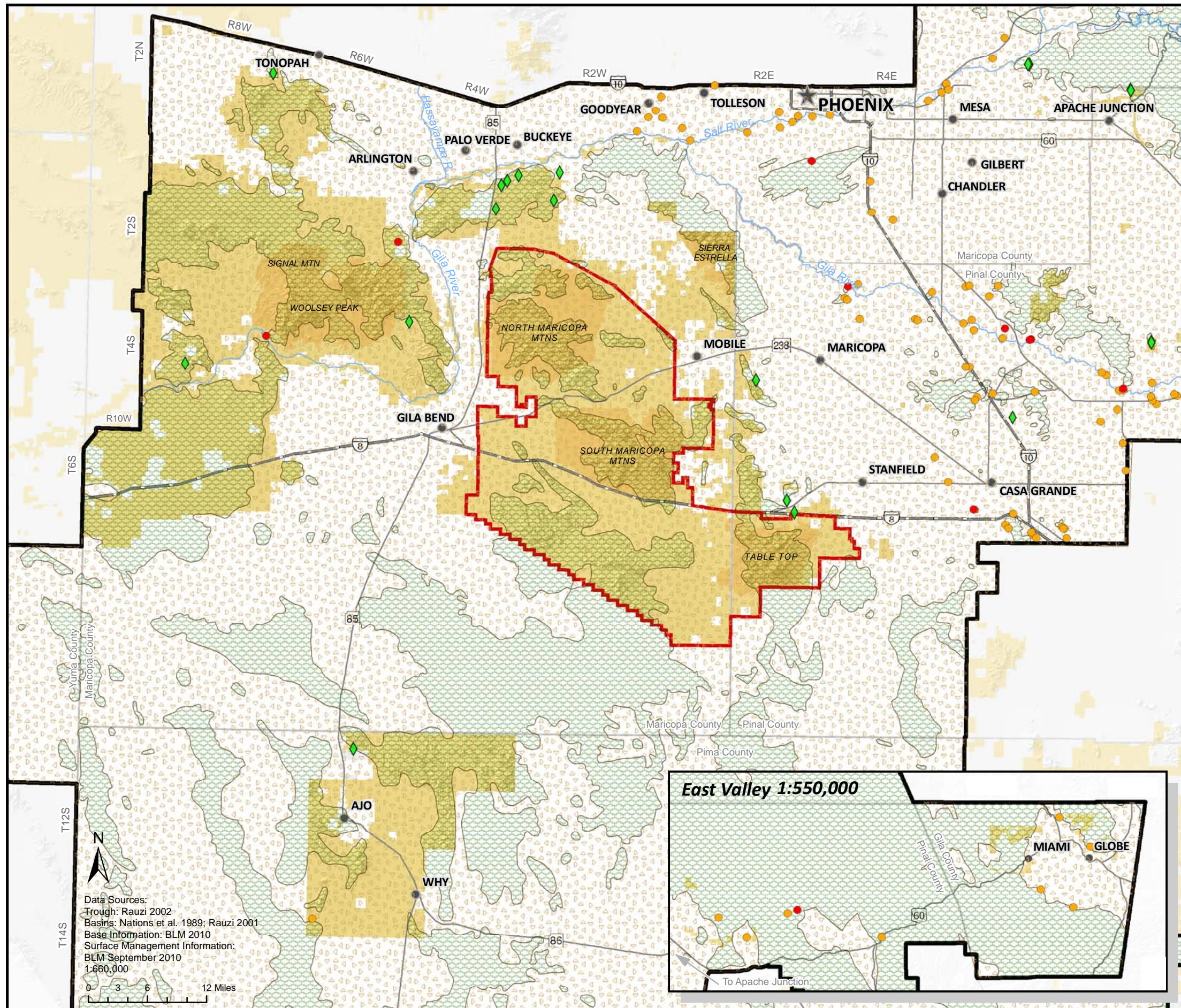
The Bureau of Land Management (BLM) conducts land use planning only in the areas administered by BLM. BLM has no planning authority under the municipal or county planning legislation of the State of Arizona.



Gila and Salt River Meridian
 Universal Transverse Mercator
 Zone 12, Units Meters
 GRS 1980 Spheroid
 NAD83 Datum

Bureau of Land Management
 Lower Sonoran Field Office

Map Last Revised: August 2011



Data Sources:
 Trough: Rauzi 2002
 Basins: Nations et al. 1989; Rauzi 2001
 Base Information: BLM 2010
 Surface Management Information:
 BLM September 2010
 1:660,000

