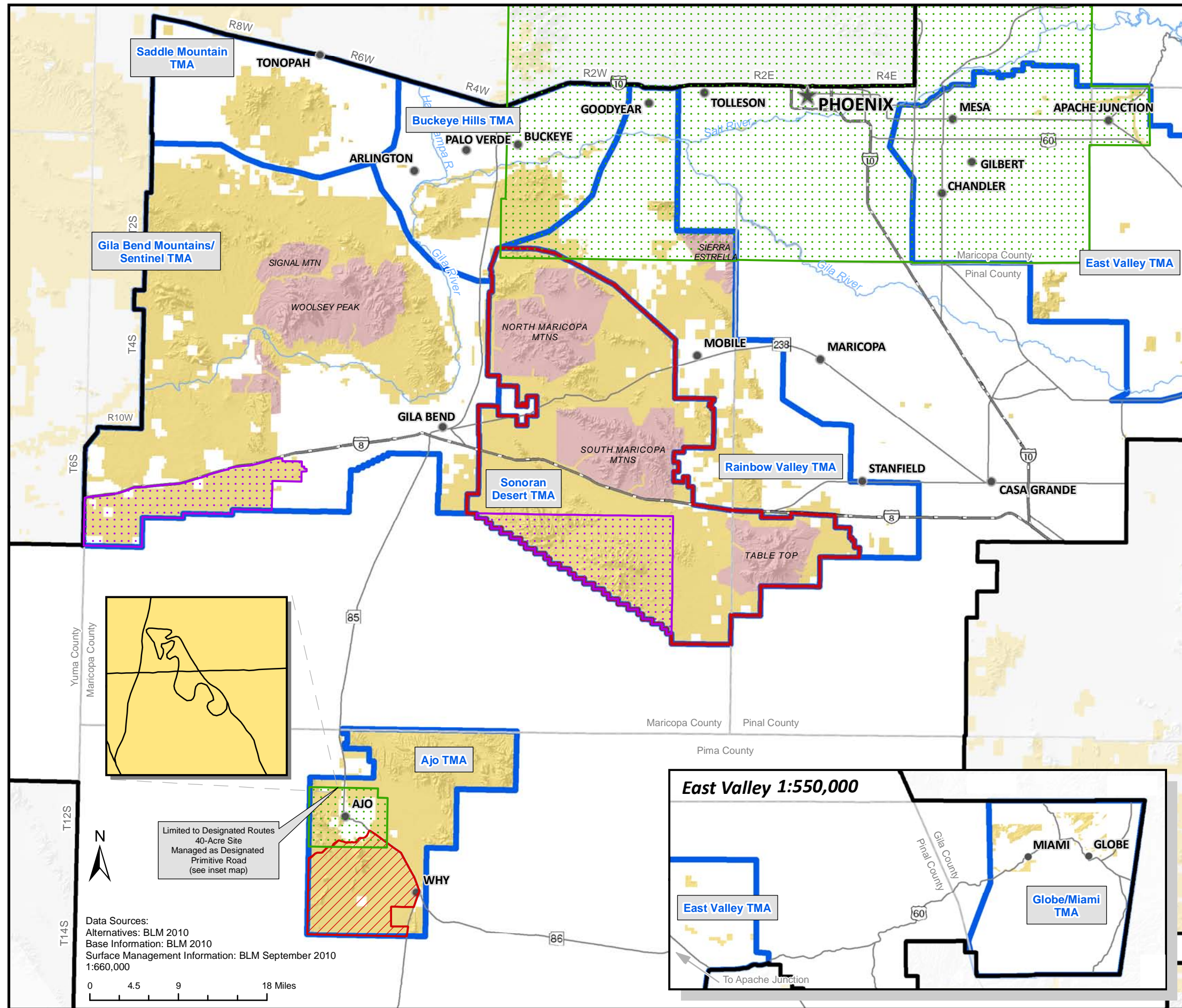


# Map 2-14c Alternative C Travel Management

Lower Sonoran and Sonoran Desert  
National Monument Draft RMP/EIS



### Travel Management Areas

Travel Management Areas

### Travel Management Areas - Limitations

Access Permits Required

PM-10 Non-attainment

Pronghorn Seasonal Closed Area

### Off-highway Vehicle Class Allocations

Limited to Designated Routes

Open (40-acre Ajo site)

Closed to Motorized Vehicles

Wilderness Areas and Painted Rock Campground Closure Area

### Planning Areas

Lower Sonoran

Sonoran Desert National Monument

### General Reference

County Boundary

Interstate

State Route

River

No warranty is made by the Bureau of Land Management (BLM) for the use of this map for purposes not intended by BLM, or to the accuracy, reliability, or completeness of the information shown. Spatial information may not meet National Map Accuracy Standards. This information may be updated without notification.

The Bureau of Land Management (BLM) conducts land use planning only in the areas administered by BLM. BLM has no planning authority under the municipal or county planning legislation of the State of Arizona.



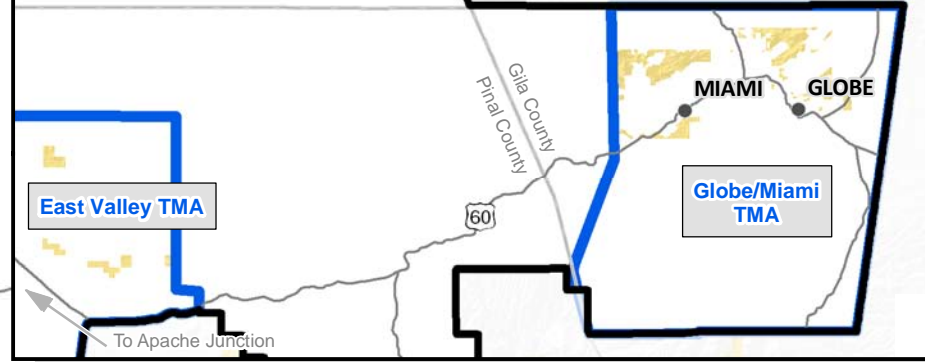
Gila and Salt River Meridian  
Universal Transverse Mercator  
Zone 12, Units Meters  
GRS 1980 Spheroid  
NAD83 Datum

Bureau of Land Management  
Lower Sonoran Field Office

Map Last Revised: August 2011



### East Valley 1:550,000



Data Sources:  
Alternatives: BLM 2010  
Base Information: BLM 2010  
Surface Management Information: BLM September 2010  
1:660,000

0 4.5 9 18 Miles

Limited to Designated Routes  
40-Acre Site  
Managed as Designated  
Primitive Road  
(see inset map)