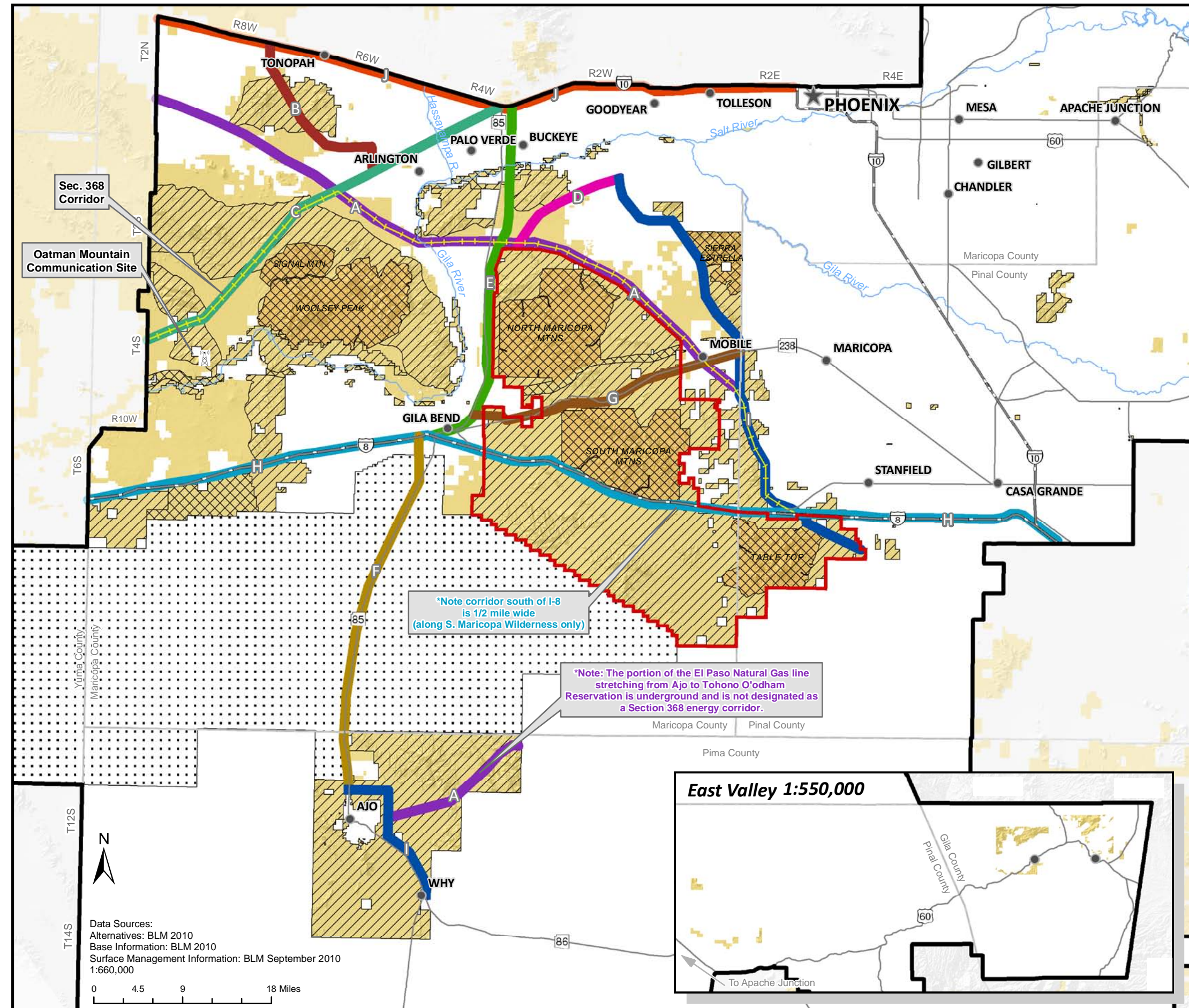


Map 2-5b Alternative B Land Use Authorizations

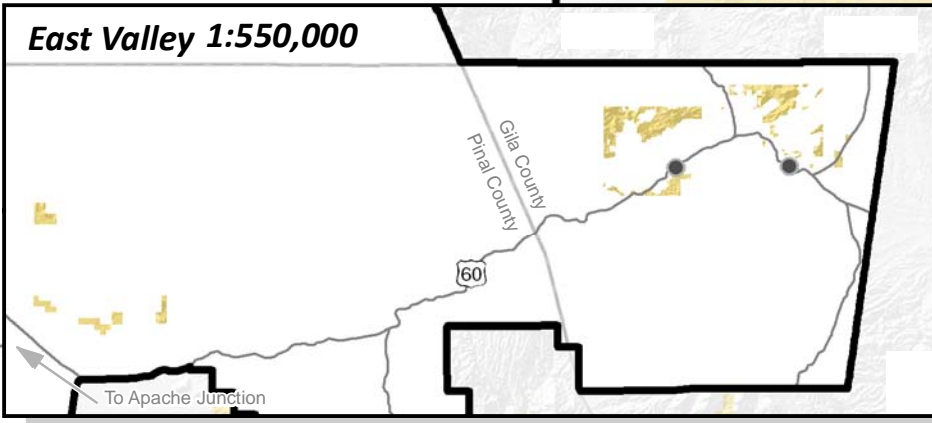
Lower Sonoran and Sonoran Desert
National Monument Draft RMP/EIS



- Communication Sites**
 Communication Site
- Utility Corridors**
- Section 368 Corridor
 - A. El Paso Natural Gas
 - B. Palo Verde - Devers
 - C. San Diego Gas & Electric
 - D. Palo Verde - Kyrene
 - E. Liberty - Gila Bend
 - F. Gila Bend - Ajo
 - G. Gila Bend - Santa Rosa
 - H. Interstate 8
 - I. Tucson Electric Power
 - J. Interstate 10
- Land Use Authorizations**
- Land Use Authorization Exclusion Areas
 - Land Use Authorization Avoidance Areas
 - Withdrawn Lands
- Planning Areas**
- Lower Sonoran
 - Sonoran Desert National Monument
- Surface Management**
- Bureau of Land Management
 - Bureau of Land Management Wilderness
- General Reference**
- County Boundary
 - Interstate
 - State Route
 - River
- No warranty is made by the Bureau of Land Management (BLM) for the use of this map for purposes not intended by BLM, or to the accuracy, reliability, or completeness of the information shown. Spatial information may not meet National Map Accuracy Standards. This information may be updated without notification.
- The Bureau of Land Management (BLM) conducts land use planning only in the areas administered by BLM. BLM has no planning authority under the municipal or county planning legislation of the State of Arizona.

*Note corridor south of I-8 is 1/2 mile wide (along S. Maricopa Wilderness only)

*Note: The portion of the El Paso Natural Gas line stretching from Ajo to Tohono O'odham Reservation is underground and is not designated as a Section 368 energy corridor.

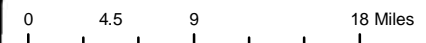


Sec. 368 Corridor

Oatman Mountain Communication Site



Data Sources:
 Alternatives: BLM 2010
 Base Information: BLM 2010
 Surface Management Information: BLM September 2010
 1:660,000



Gila and Salt River Meridian
 Universal Transverse Mercator
 Zone 12, Units Meters
 GRS 1980 Spheroid
 NAD83 Datum

Bureau of Land Management
 Lower Sonoran Field Office
 Map Last Revised: August 2011

