

Map 2-10d Alternative D Mineral Restrictions: Leasables

Lower Sonoran and Sonoran Desert
National Monument Draft RMP/EIS

Mineral Estate Restrictions

- Existing Closure to All Minerals (On BLM Lands) - 625,000 Acres
Wilderness Areas, Painted Rock Dam, Sentinel Plain, Fred J Weiler Greenbelt, SDNM, BOR Reclamation Projects, R&PP Lands
- Proposed Closure to Leasables - 381,500 Acres
Painted Rock Campground, Anza National Historic Trail, Gila Bend WHA, All ACECs
- Open with Special Mitigation - 206,800 Acres
VRM Class II, Tortoise Class I and II

Mineral Estate Open with Standard Mitigation

- BLM Surface, BLM Subsurface
- Other Non-Federal Surface, BLM Subsurface

Planning Areas

- Lower Sonoran
- Sonoran Desert National Monument

General Reference

- County Boundary
- Interstate
- State Route
- River

No warranty is made by the Bureau of Land Management (BLM) for the use of this map for purposes not intended by BLM, or to the accuracy, reliability, or completeness of the information shown. Spatial information may not meet National Map Accuracy Standards. This information may be updated without notification.

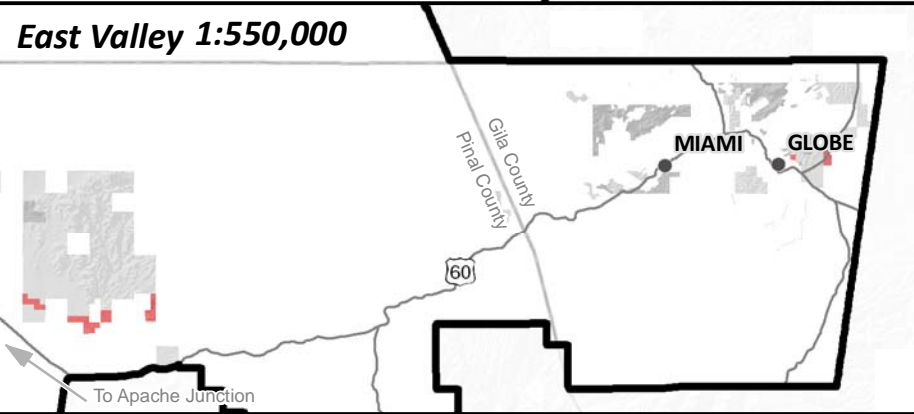
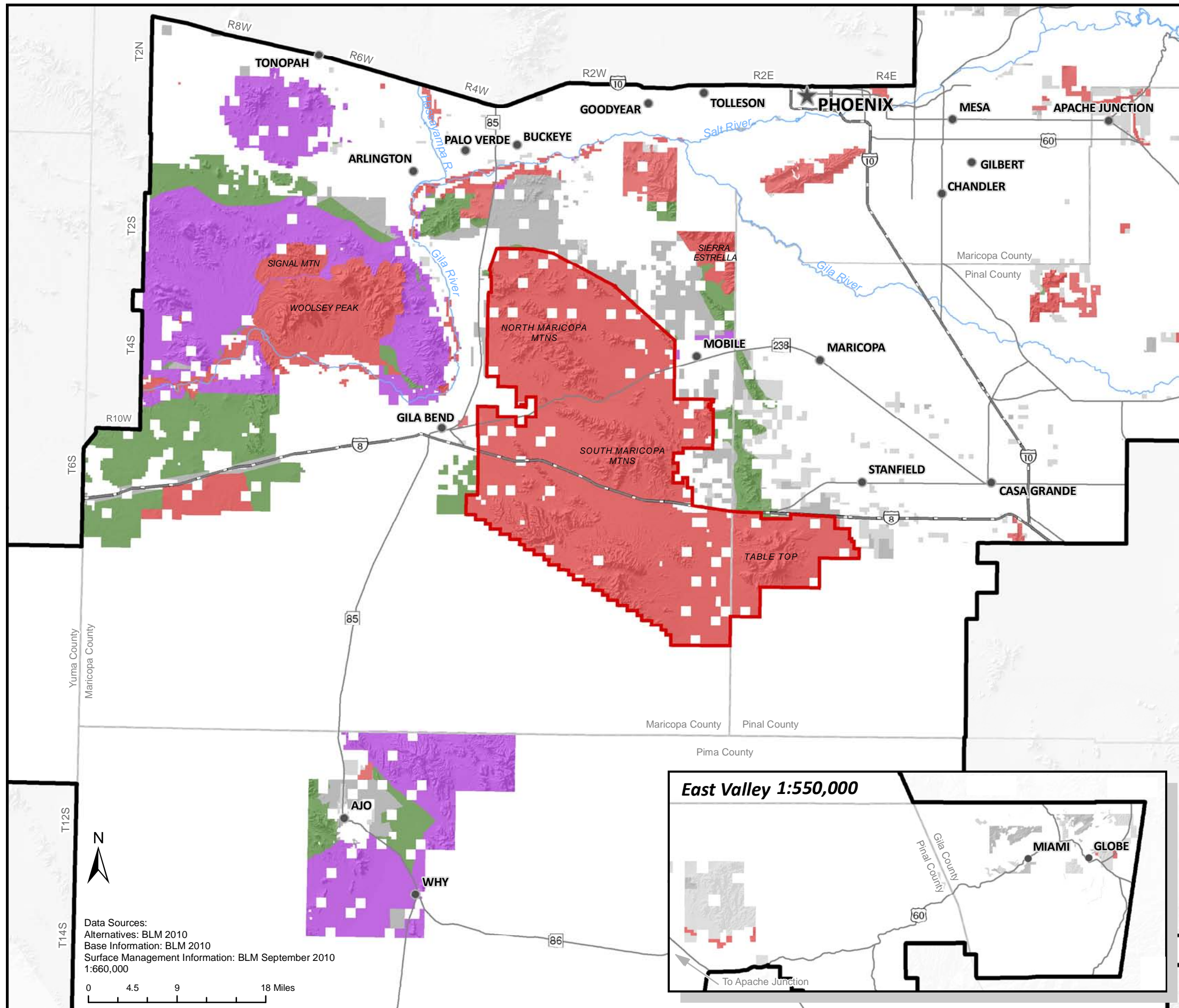
The Bureau of Land Management (BLM) conducts land use planning only in the areas administered by BLM. BLM has no planning authority under the municipal or county planning legislation of the State of Arizona.



Gila and Salt River Meridian
Universal Transverse Mercator
Zone 12, Units Meters
GRS 1980 Spheroid
NAD83 Datum

Bureau of Land Management
Lower Sonoran Field Office

Map Last Revised: August 2011



Data Sources:
Alternatives: BLM 2010
Base Information: BLM 2010
Surface Management Information: BLM September 2010
1:660,000

