

Map 2-2d

# Alternative D Priority Wildlife

Lower Sonoran and Sonoran Desert  
National Monument Draft RMP/EIS

- Wildlife Habitat Area (WHA)
- Wildlife Movement Corridor
- Pronghorn Seasonal Closure to all Public Use  
Closed March 15 to July 15
- Planning Areas**
- Lower Sonoran
- Sonoran Desert National Monument
- Surface Management**
- Bureau of Land Management
- Bureau of Land Management Wilderness
- General Reference**
- County Boundary
- Interstate
- State Route
- River

No warranty is made by the Bureau of Land Management (BLM) for the use of this map for purposes not intended by BLM, or to the accuracy, reliability, or completeness of the information shown. Spatial information may not meet National Map Accuracy Standards. This information may be updated without notification.

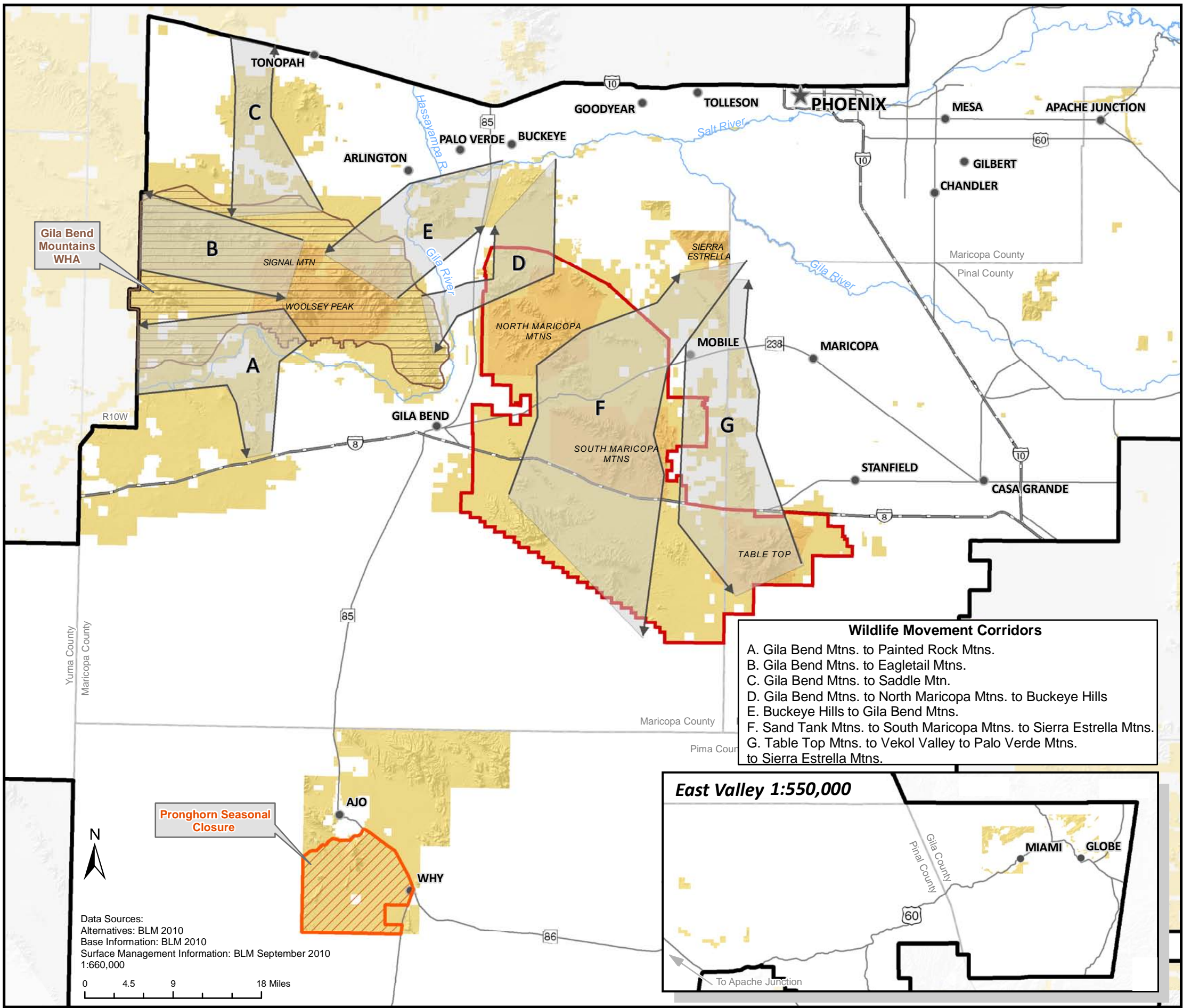
The Bureau of Land Management (BLM) conducts land use planning only in the areas administered by BLM. BLM has no planning authority under the municipal or county planning legislation of the State of Arizona.



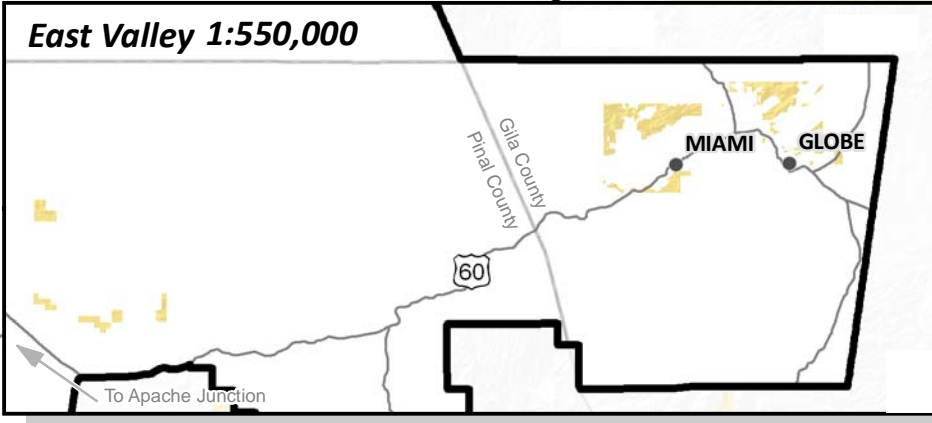
Gila and Salt River Meridian  
Universal Transverse Mercator  
Zone 12, Units Meters  
GRS 1980 Spheroid  
NAD83 Datum

Bureau of Land Management  
Lower Sonoran Field Office

Map Last Revised: August 2011



- Wildlife Movement Corridors**
- A. Gila Bend Mtns. to Painted Rock Mtns.
  - B. Gila Bend Mtns. to Eagletail Mtns.
  - C. Gila Bend Mtns. to Saddle Mtn.
  - D. Gila Bend Mtns. to North Maricopa Mtns. to Buckeye Hills
  - E. Buckeye Hills to Gila Bend Mtns.
  - F. Sand Tank Mtns. to South Maricopa Mtns. to Sierra Estrella Mtns.
  - G. Table Top Mtns. to Vekol Valley to Palo Verde Mtns. to Sierra Estrella Mtns.



Pronghorn Seasonal Closure

Data Sources:  
Alternatives: BLM 2010  
Base Information: BLM 2010  
Surface Management Information: BLM September 2010  
1:660,000

