


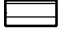



**Map 3-14
 Agua Fria National
 Monument / Bradshaw-
 Harquahala Planning Area
 Potential Leasable
 Mineral**

-  Agua Fria National Monument Planning Area
-  Bradshaw-Harquahala Planning Area
-  BLM Wilderness Area
-  USFS Wilderness Area
-  Interstate
-  Highway
-  Major Road
-  Major River, Stream or Wash

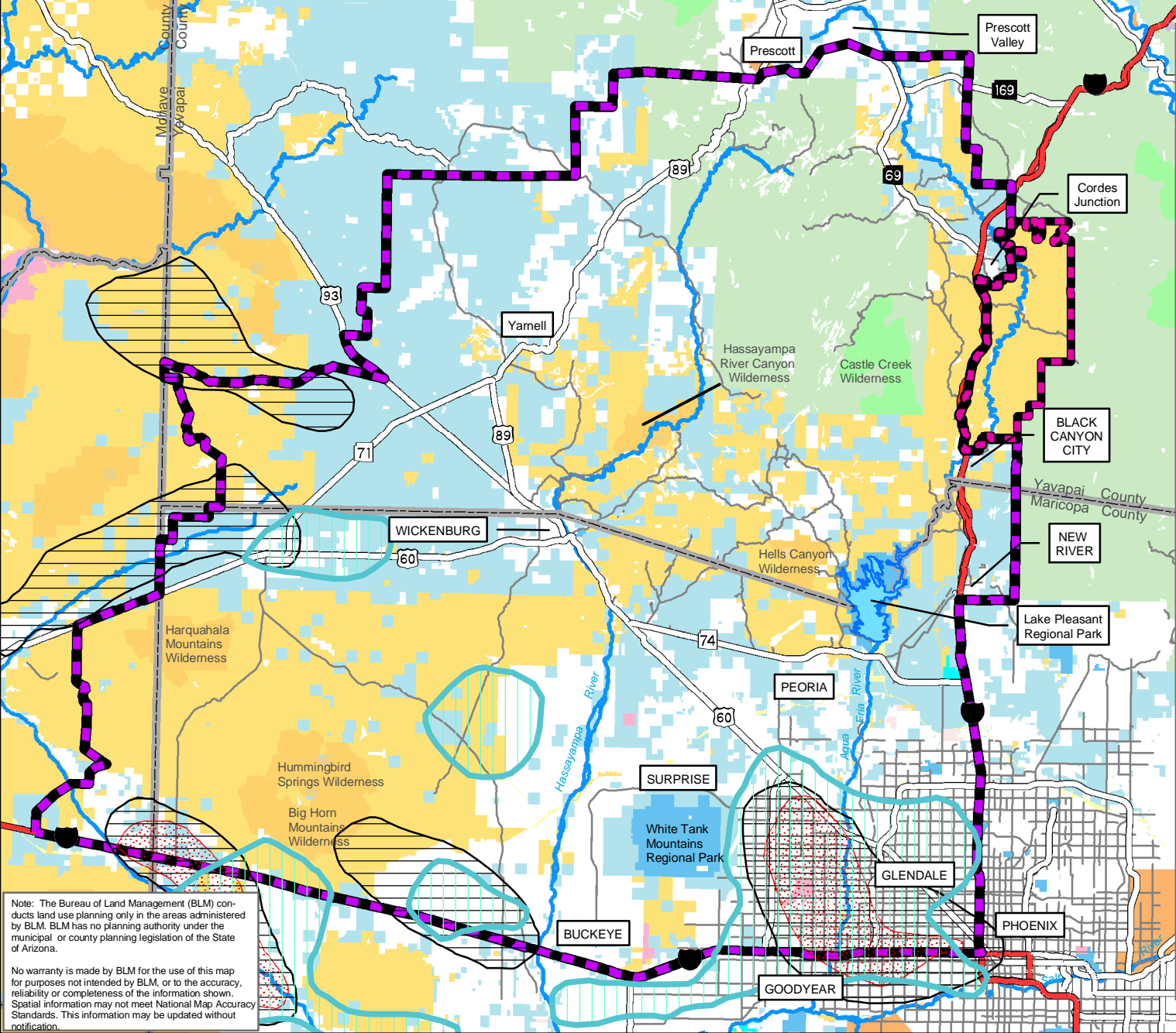
Potential Leasable Mineral

-  Potential Geothermal Resource
-  Potential Salt Deposit
-  Potential Oil & Gas

Miles
 0



**Bureau of Land Management
 Phoenix Field Office
 Phoenix AZ**
 August 2004



Note: The Bureau of Land Management (BLM) conducts land use planning only in the areas administered by BLM. BLM has no planning authority under the municipal or county planning legislation of the State of Arizona.

No warranty is made by BLM for the use of this map for purposes not intended by BLM, or to the accuracy, reliability or completeness of the information shown. Spatial information may not meet National Map Accuracy Standards. This information may be updated without notification.