










**Map 2-20
Bradshaw-Harquahala
Planning Area**

**Utility & Transportation
Corridors and
Communication Sites
Alternative B**

-  Agua Fria National Monument Planning Area
-  Bradshaw-Harquahala Planning Area
-  BLM Wilderness Area
-  USFS Wilderness Area
-  Interstate
-  Highway
-  Major Road
-  Major River, Stream or Wash

Corridor Allocations

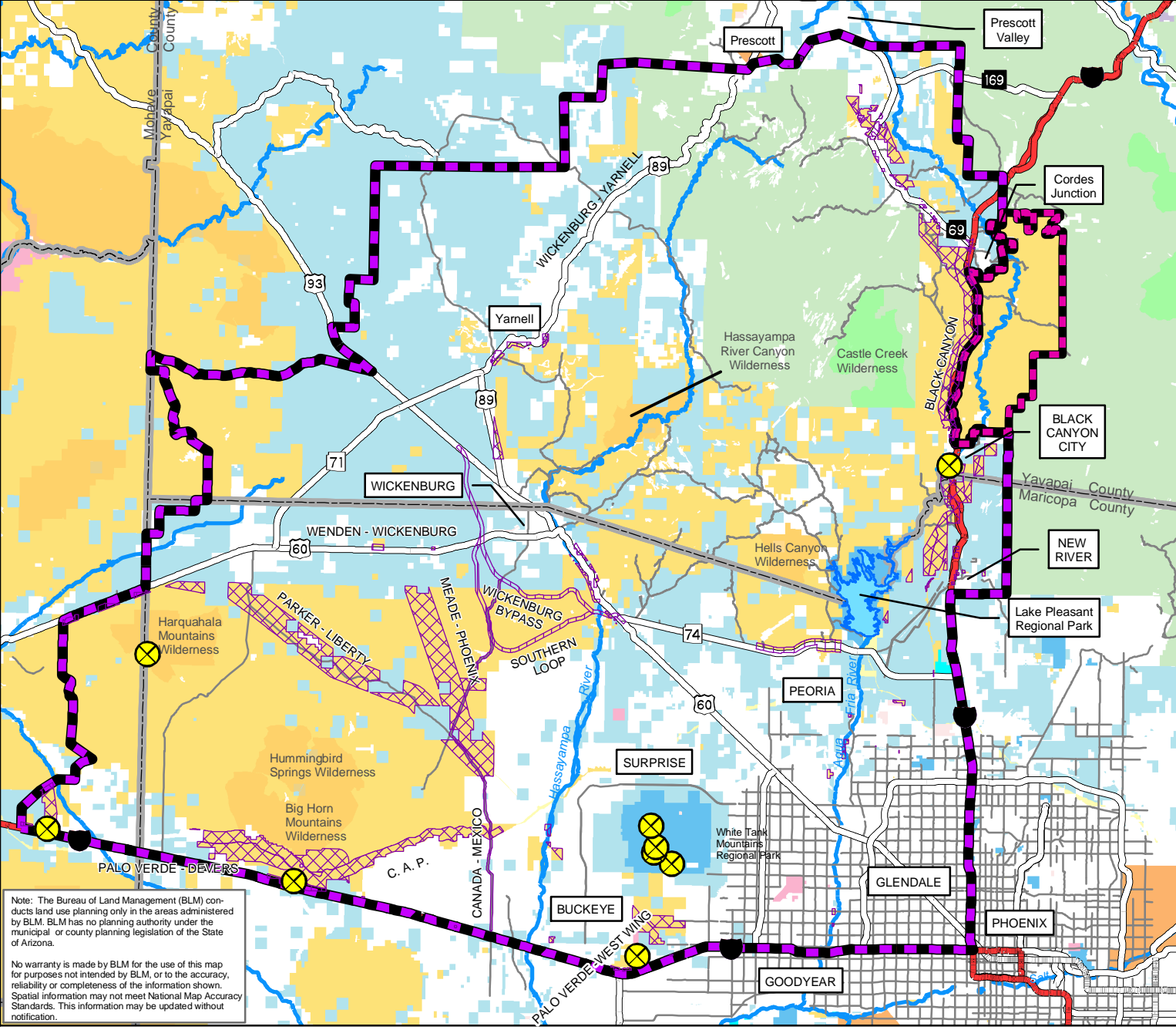
-  Multi-use Corridor
-  Transportation Corridor
-  Communication Site

Note: Land Status legend located on Map 1-1

Miles
0 0.5 1



**Bureau of Land Management
Phoenix Field Office
Phoenix AZ**



Note: The Bureau of Land Management (BLM) conducts land use planning only in the areas administered by BLM. BLM has no planning authority under the municipal or county planning legislation of the State of Arizona.

No warranty is made by BLM for the use of this map for purposes not intended by BLM, or to the accuracy, reliability or completeness of the information shown. Spatial information may not meet National Map Accuracy Standards. This information may be updated without notification.