




Map 2-86  
 Harquahala  
 Management Unit  
 Multiple Resource Allocation &  
 Special Area Designations  
 Alternative E

-  Bradshaw-Harquahala Planning Area Management Unit
-  Wilderness Area
-  County Boundary
-  Interstate
-  Highway
-  Major Road
-  Minor Road
-  Major River, Stream or Wash

- Resource Allocations**
-  Wilderness Characteristics
  -  Wildlife Management Area (WMA)
  -  Cultural Resource Public Use Area (CRPUA)

- Special Area Designations**
-  Area of Critical Environmental Concern ACEC

Note: Land Status legend located on Map 1-1

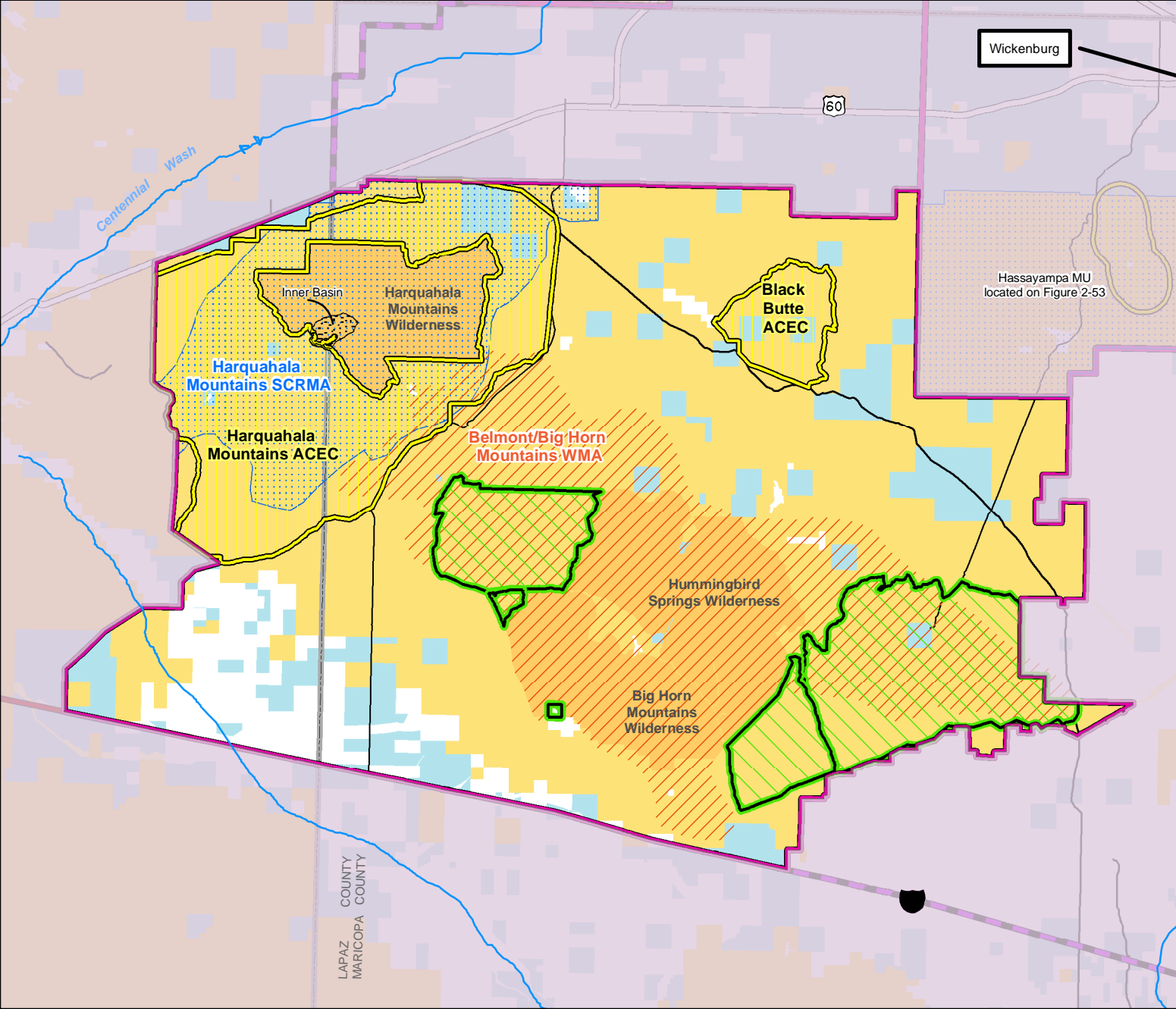
Note: The Bureau of Land Management (BLM) conducts land use planning only in the areas administered by BLM. BLM has no planning authority under the municipal or county planning legislation of the State of Arizona.

No warranty is made by BLM for the use of this map for purposes not intended by BLM, or to the accuracy, reliability or completeness of the information shown. Spatial information may not meet National Map Accuracy Standards. This information may be updated without notification.

Miles  
 0



Bureau of Land Management  
 Phoenix Field Office  
 Phoenix AZ  
 August 2004



Wickenburg

60

Hassayampa MU  
 located on Figure 2-53

LAPAZ COUNTY  
 MARICOPA COUNTY