

Public Meeting: October 25, 2007

Saginaw Hill Construction Update

Pima County, AZ

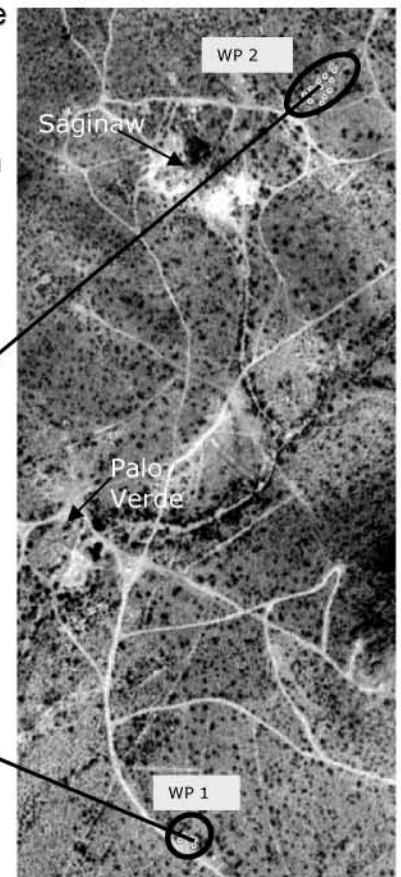
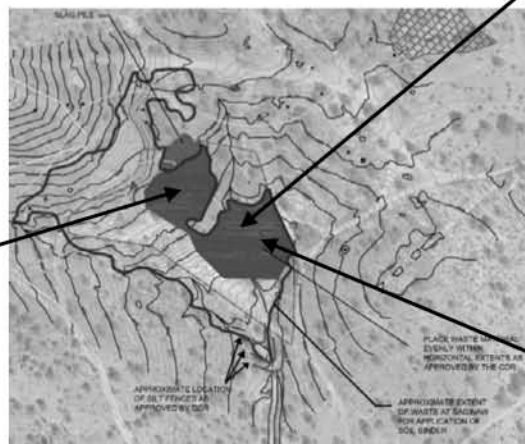
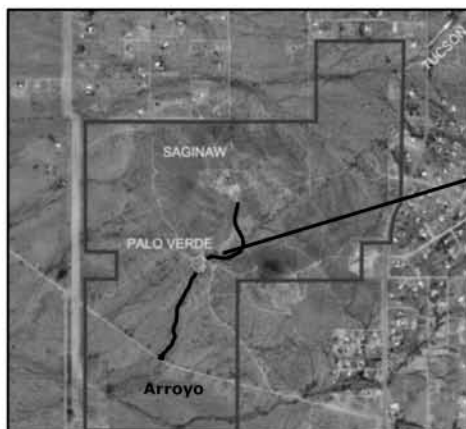
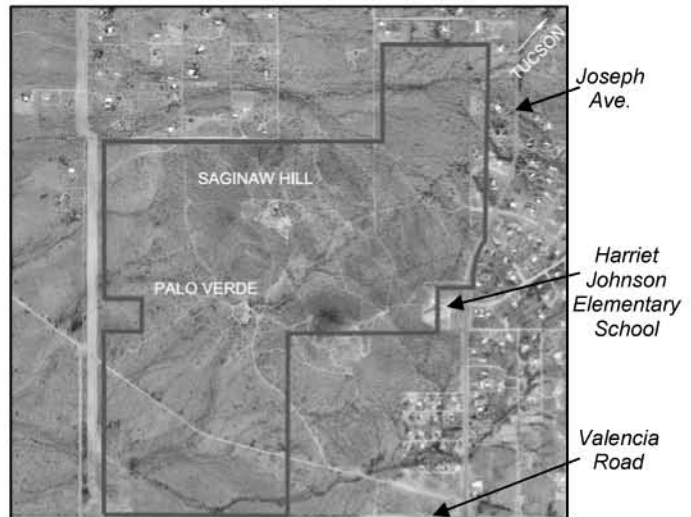


History and Location of Site

- Sulfide mining and smelting occurred at the site from the late 1800s through the mid-1900s.
- The mine tailings, waste rock, and slag left over from mining and processing present a concern for human health and the environment.
- Several investigations were completed and interim measures have been taken to limit public exposure.

Phase I of Engineering Design

- Removal Action Objective: Stabilize area, minimize exposure to lead and arsenic through interim measures and prevent offsite migration of contaminants
 - Consolidate materials from auxiliary waste piles at Saginaw mine repository site
 - Excavate contaminated sediments from arroyo and consolidate at Saginaw mine repository site
 - Stabilize new material placed at Saginaw mine repository site with soil binder
 - Grade and stabilize excavated areas to drain and stabilize with vegetation or soil binder
 - Armor arroyo with gravel and riprap to prevent erosion
- Timeline: Construction starts week of October 29, 2007
Anticipated to last ~3 months



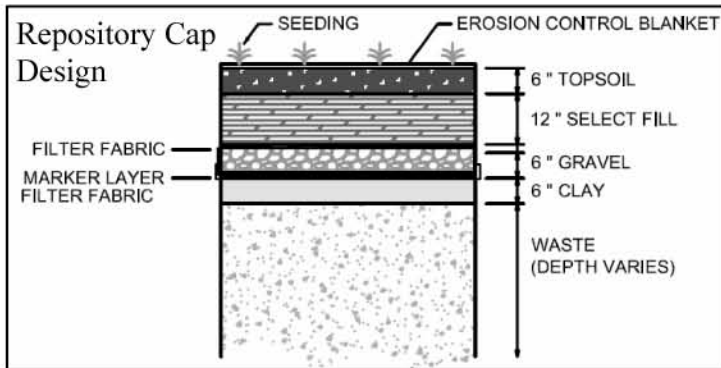
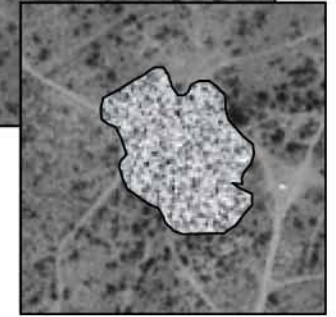
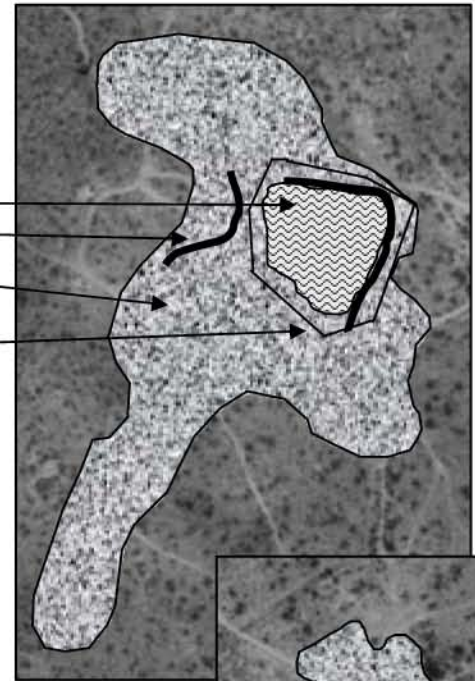
Saginaw Hill Construction Update (continued)



Phase II of Engineering Design

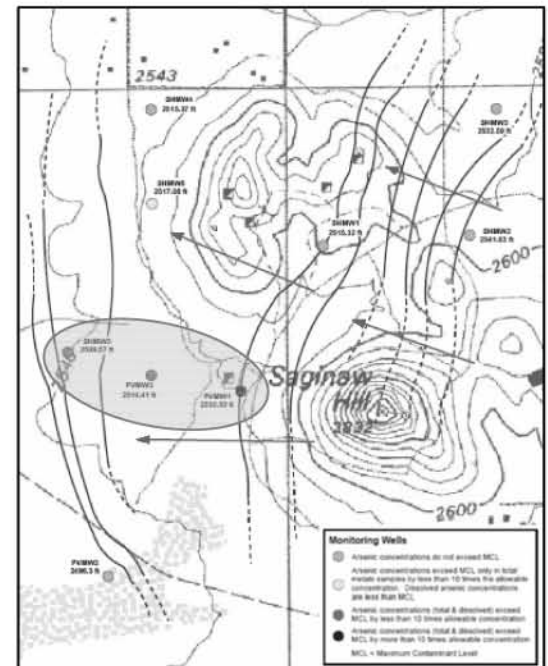
- **Removal Action Objective:** Long term remedy to prevent or reduce human and ecological exposure to contaminants of concern and prevent or reduce offsite migration.
 - Excavate waste material from Palo Verde
 - Excavate waste material from Saginaw
 - Construct repository
 - Construct run-on/ run-off diversion channels
 - Place crushed rock cap on excavated areas and surrounding soils
 - Fence around repository

- **Timeline:** Funding pending



Ongoing Groundwater Monitoring Program

- Five additional wells installed (9 monitoring wells now onsite)
- First round of groundwater sampling completed
- Second round of groundwater sampling being conducted in November 2007
- Groundwater contamination concentrated around Palo Verde site, appears to be limited to area.
- No current groundwater receptors (exposure is currently contained)



For further information on the abandoned mines site design and construction at Saginaw Hill, please contact:
Bureau of Land Management
Tucson Field Office
 12661 E. Broadway
 Tucson, AZ 85748
 Telephone: 520-258-7200
 Fax: 520-258-7238

Saginaw Hill Websites
www.saginawhill.ene.com
www.blm.gov/az