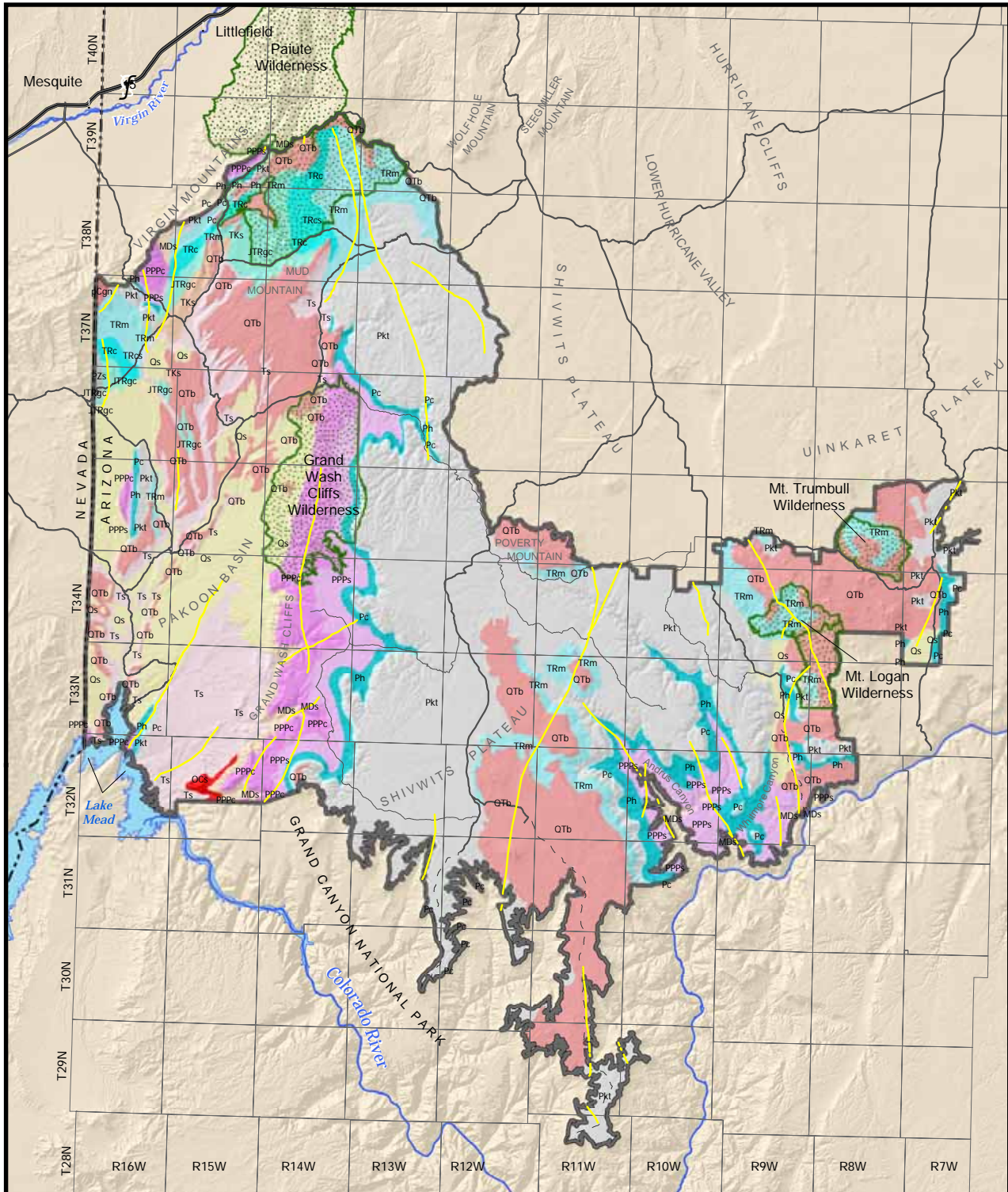


Map 2.2 Geologic Formations on the Grand Canyon - Parashant National Monument



**Map 2.2**  
**Geologic Formations**  
**on the Grand Canyon -**  
**Parashant National Monument**



Note: Decisions in this document only apply to Bureau of Land Management (BLM) and National Park Service (NPS) lands in the Planning Area.

No warranty is made by BLM or NPS for the use of this map for purposes not intended by either agency, or to the accuracy, reliability or completeness of the information shown. Spatial information may not meet National Map Accuracy Standards. This information may be updated without notification.

**Geologic Unit**

- Qs
- QTb
- Ts
- TKs
- JTRgc
- TRc
- TRCs
- TRm
- Pkt
- Pc
- Ph
- PPPs
- PPPc
- PZs
- MDS
- OCS
- pCgn
- Wilderness

- Geologic Faults
- Monument Boundary
- State Boundary

Note: Refer to CD of the Approved Plan for a digital version of this map.

- Transportation**
- Interstate
- Highway
- Major Route
- Secondary Route
- 4WD Route



Map Location

Prepared by  
 Arizona Strip GIS Team  
 December 2007

