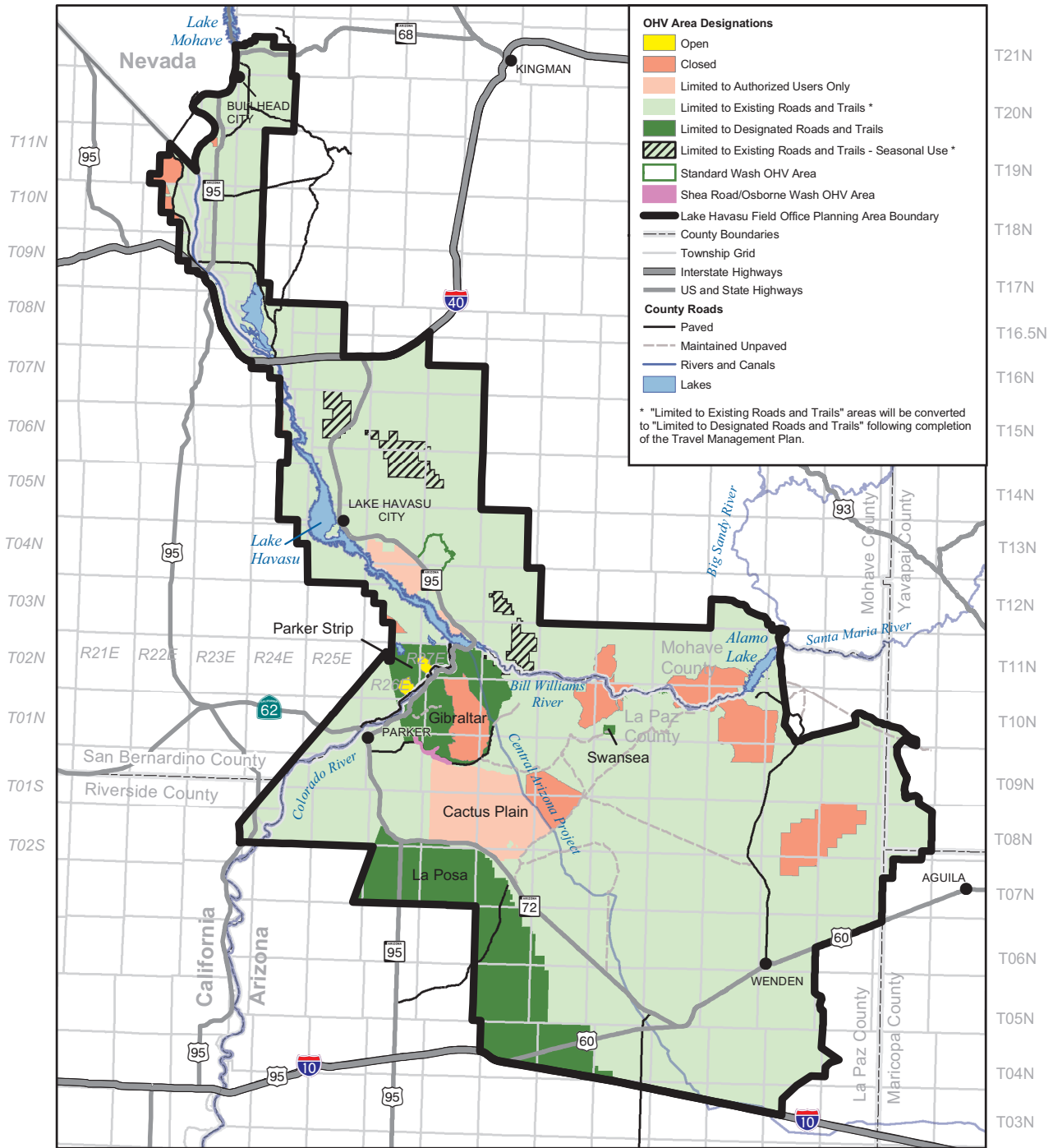


# Map 31 Off-Highway Vehicle Area Designations

R20E R21E



**OHV Area Designations**

- Open
- Closed
- Limited to Authorized Users Only
- Limited to Existing Roads and Trails \*
- Limited to Designated Roads and Trails
- Limited to Existing Roads and Trails - Seasonal Use \*
- Standard Wash OHV Area
- Shea Road/Osborne Wash OHV Area

**Other Features:**

- Lake Havasu Field Office Planning Area Boundary
- County Boundaries
- Township Grid
- Interstate Highways
- US and State Highways

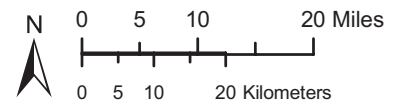
**County Roads**

- Paved
- Maintained Unpaved
- Rivers and Canals
- Lakes

\* "Limited to Existing Roads and Trails" areas will be converted to "Limited to Designated Roads and Trails" following completion of the Travel Management Plan.

R22W R21W R20W R19W R18W R17W R16W R15W R14W R13W R12W R11W R10W

**LAKE HAVASU FIELD OFFICE**  
 Record of Decision /  
 Approved Resource Management Plan



The Bureau of Land Management makes no warranties, implied or expressed, with respect to information shown on this map.



UNITED STATES DEPARTMENT OF THE INTERIOR  
 Bureau of Land Management

May 2007