



TABLE MESA RECREATION PLAN AREA



- BLM
- Private
- State
- State & County Parks
- Project Boundary
- GPS'd Inventory Route
- Black Canyon Trail/Non-Motorized



BLM Phoenix District Office
21005 N. 7th Avenue
Phoenix, AZ 85027
(602) 680 6500
10-27-2008



No warranty is made by the BLM for the use of this map for purposes not intended by BLM, or to the completeness of the information shown. Spatial information may not meet National Mapping Accuracy Standards. This information may be updated without notification.

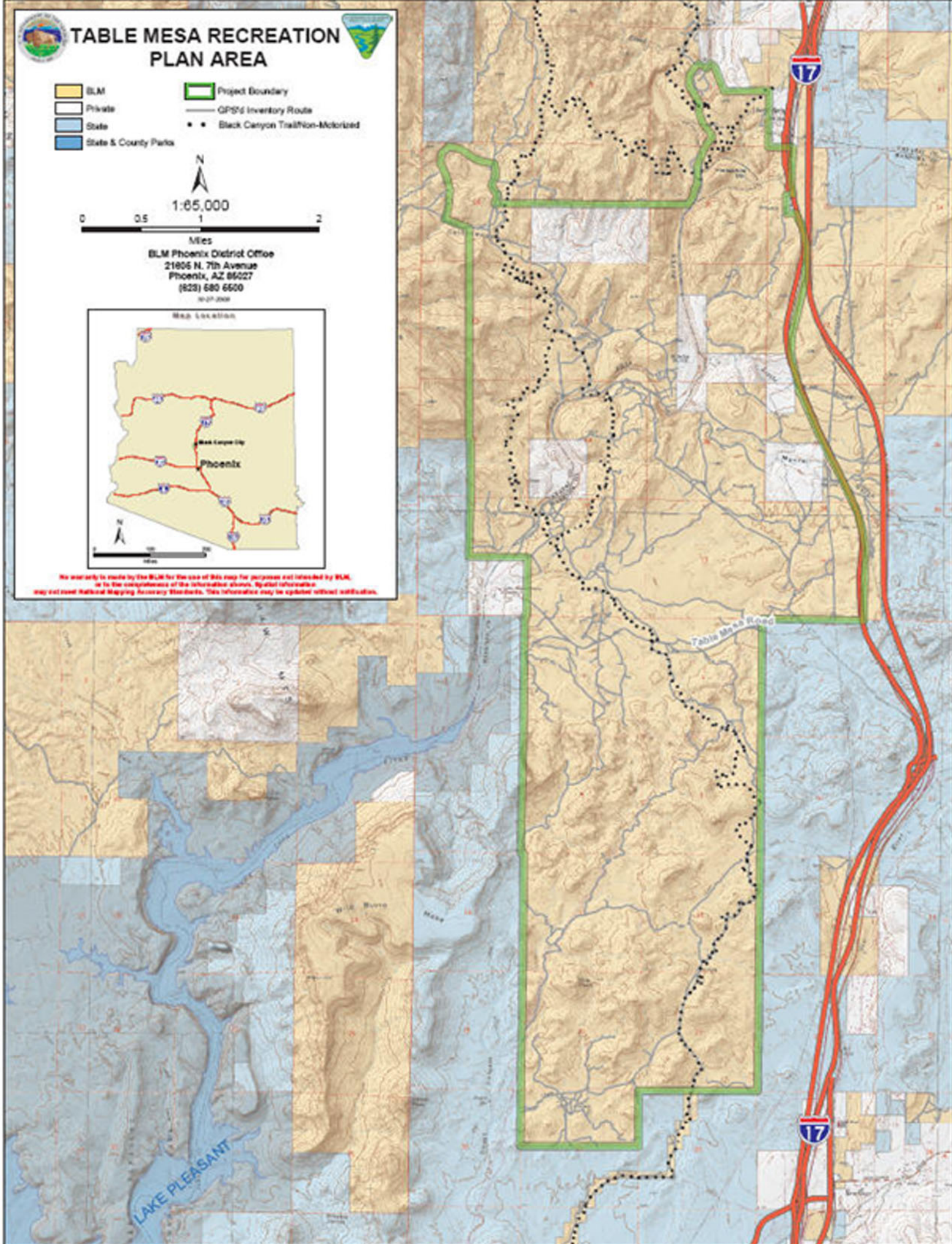


Table Mesa Recreation Plan

Plan Objectives: Accommodate uses while protecting the natural and cultural values.

Plan Scope:

- 1) **Implement a system of roads and trails per 43 CFR 8342.1**
- 2) **Identify recreational shooting management strategies for the area**
- 3) **Identify facilities needed in the area to manage use**
- 4) **Create a plan for funding, implementation and management**

"This detailed plan will recognize and work within decisions made previously in the Resource Management Plan" (http://www.blm.gov/az/st/en/prog/planning/afria_plan.html)

Area Uses:

- Target shooting
- OHV driving / riding
- Hiking / Horseback Riding
- Access to private / state land
- Camping / day use
- Rock crawling
- Wildlife viewing / birding
- Mining / Ranching
- Hunting
- Energy transmission
- Special recreation permits
- Rock hounding, geocaching, paintball

Area Concerns:

- Target shooting in unsafe locations
- Unlicensed OHV driving on county maintained roads
- Non-motorized BCT in the middle of a heavy OHV use area
- Access routes to BLM land crossing state and private lands
- Insufficient area for event parking / camping
- Vehicle use in riparian habitat
- Loss of Desert Tortoise habitat

Resource Management Plan Decisions

Manage the Black Canyon Trail (BCT):

- Develop at least 8 trailheads
- Build trail links to BCT trail, acquire easements
- Black Canyon Trail is to be non-motorized
- Develop motorized parallel trail
- Develop loop trails off of the BCT (motorized/non-motorized)

Develop Recreation:

- Acquire legal access to public lands
- Build single use or multi-use routes/loops
- Build parking areas/staging/trailheads (small=1ac, large =5-10ac)
- Prohibit motorized competitive races in the area
- Pursue legal public access through Lake Pleasant Park for historical/archaeological site access
- Manage target shooting consistent with guidelines in the plan
- Camping limited to 14 days
- Concession leases must demonstrate strong public demand
- Single-track and two-track motorized opportunities available (moderate/heavy use levels are acceptable)

Travel Management:

- Designate routes within 2 years of completion of the RMP
- Area will be managed for motorized / non-motorized travel modes
- Prohibit motorized game retrieval
- Rock crawling limited to designated trails, limiter devices required
- Acquire public access if necessary or available

Improve Natural Resources:

- Mitigate or close all motor vehicle routes in riparian areas (supported by survey trend data)
- Manage Desert Tortoise for "no net loss in quantity or quality of habitat"
- Follow guidance set forth in "common to all" sections of RMP

Process Lands and Realty Actions:

- Utility/transportation corridor designated, issue rights-of-way in corridor
- No land disposal identified

Manage Cultural Resources:

- Develop some historic properties for heritage tourism
- Select certain sites for public use
- Continue working with Site Steward Program