



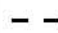
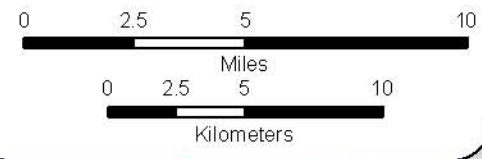


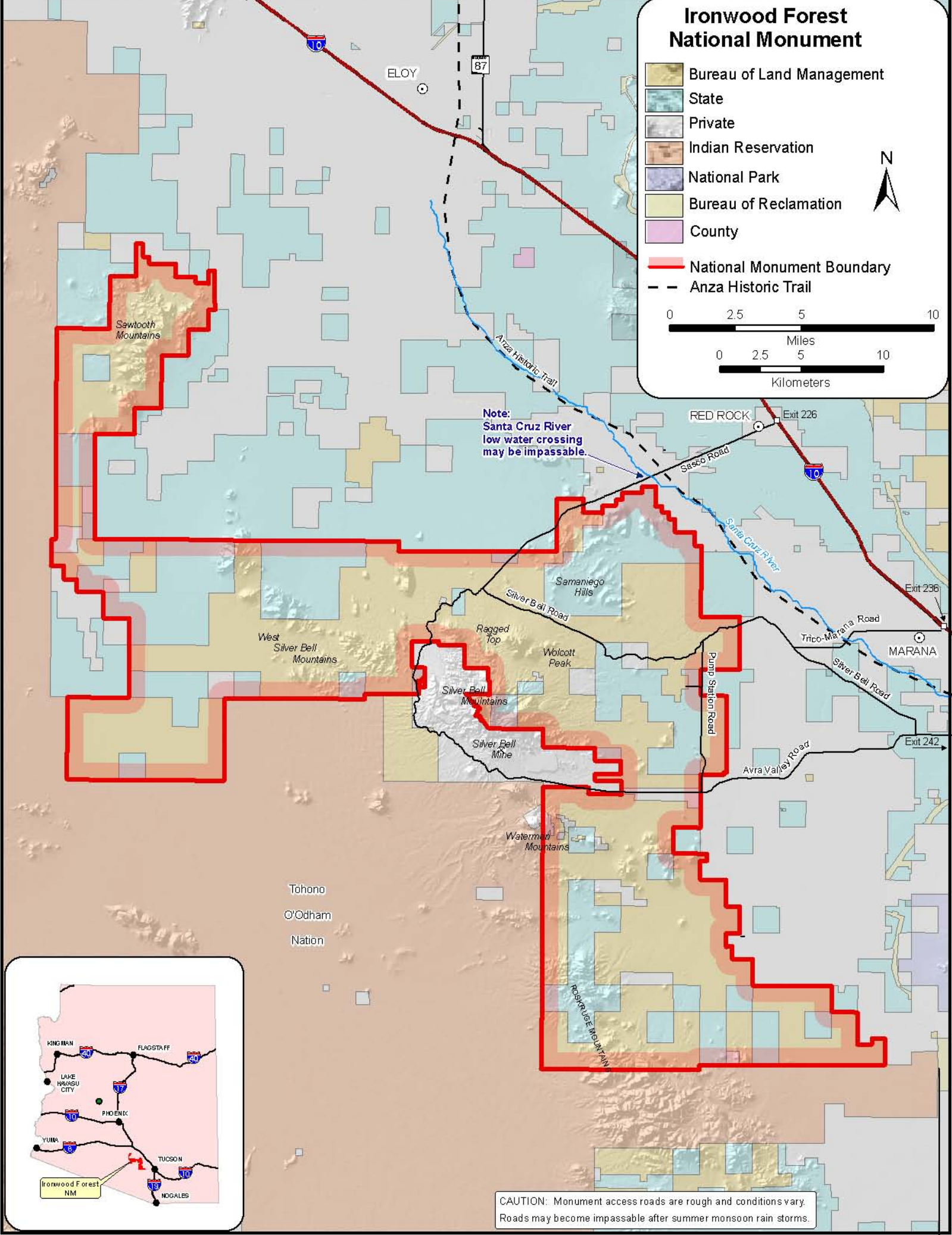
Ironwood Forest National Monument

-  Bureau of Land Management
-  State
-  Private
-  Indian Reservation
-  National Park
-  Bureau of Reclamation
-  County

-  National Monument Boundary
-  Anza Historic Trail



Note: Santa Cruz River low water crossing may be impassable.



CAUTION: Monument access roads are rough and conditions vary. Roads may become impassable after summer monsoon rain storms.