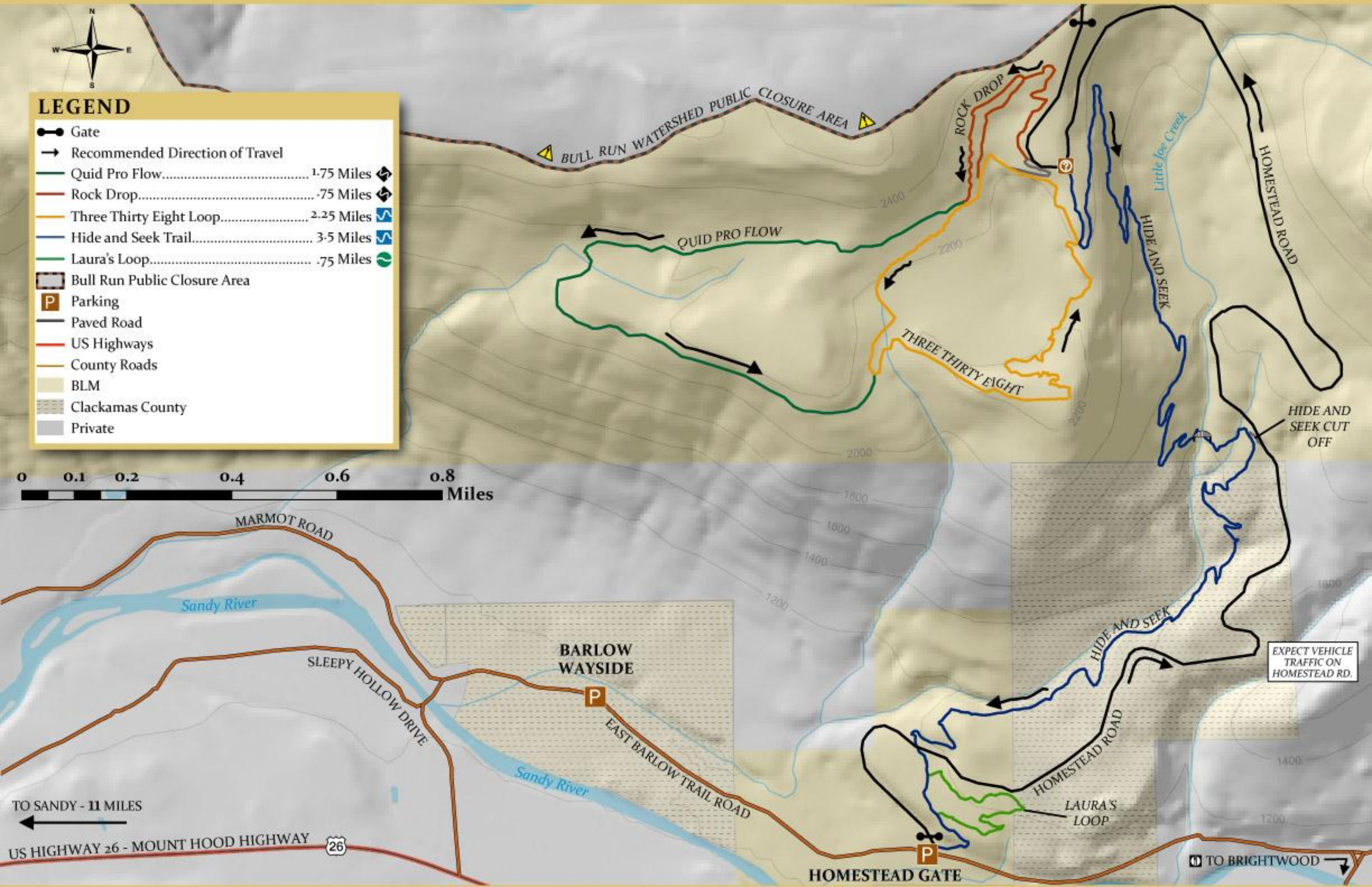
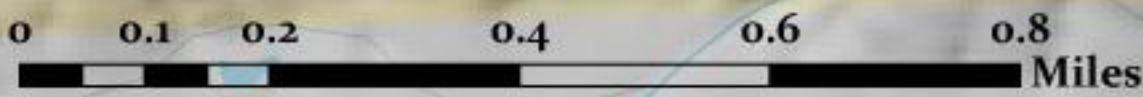


# SANDY RIDGE TRAIL SYSTEM MAP



## LEGEND

- Gate
- Recommended Direction of Travel
- Quid Pro Flow..... 1.75 Miles
- Rock Drop..... .75 Miles
- Three Thirty Eight Loop..... 2.25 Miles
- Hide and Seek Trail..... 3.5 Miles
- Laura's Loop..... .75 Miles
- Bull Run Public Closure Area
- Parking
- Paved Road
- US Highways
- County Roads
- BLM
- Clackamas County
- Private



TO SANDY - 11 MILES  
 ←  
 US HIGHWAY 26 - MOUNT HOOD HIGHWAY

TO BRIGHTWOOD →

