

# NEWS Release BUREAU OF LAND MANAGEMENT

777 Garden Valley Blvd • Roseburg, Oregon 97471 • <http://www.blm.gov/or/districts/roseburg>

For release: Immediate  
Release No: OR-100-FY2013-003  
December 5, 2012

Contact: Jake Winn: (541) 440-3275  
Cheyne Rossbach: (541) 464-3245

## BLM to Continue Test Grazing at North Bank Area

**Roseburg, Ore.** – The Bureau of Land Management (BLM) is planning to use cattle to graze approximately 1,176 acres within the North Bank Habitat Management Area (NBHMA) beginning in late December 2012. The NBHMA is situated approximately three miles southeast of Sutherlin, Oregon, along North Bank Road.

The grazing is intended remove thatch and stimulate new growth in order to improve forage for the Columbian white-tailed deer. The BLM began testing grazing in December 2011. The grazing has shown encouraging results, and BLM plans to expand its use this year.

The project has been designed in cooperation with the Oregon Department of Fish Wildlife, the US Fish and Wildlife Service, and the Sandberg Family Ranch.

Currently, BLM employees, a Phoenix School youth work crew, and members of the Sandberg family are constructing gates and temporary electric fences. If you are recreating in the area, please make sure to close and latch gates and keep dogs under close control in the vicinity of livestock.

For more information about the Roseburg BLM visit:

<http://www.blm.gov/or/districts/roseburg/index.php>

Further information about the NBHMA can be found at the following page:

[http://www.blm.gov/or/districts/roseburg/north\\_bank.php](http://www.blm.gov/or/districts/roseburg/north_bank.php)

The BLM manages more land – more than 245 million acres - than any other Federal agency. This land, known as the National System of Public Lands, is primarily located in 12 Western states, including Alaska. The Bureau, with a budget of about \$1 billion, also administers 700 million acres of sub-surface mineral estate throughout the nation. The BLM's multiple-use mission is to sustain the health and productivity of the public lands for the use and enjoyment of present and future generations. The Bureau accomplishes this by managing such activities as outdoor recreation, livestock grazing, mineral development, and energy production, and by conserving natural, historical, cultural, and other resources on public lands.

Come join the Oregon/Washington BLM on Facebook, Twitter, YouTube, and Flickr for the latest on outdoor opportunities, videos of your public lands, spectacular photos, and a whole lot more!

FACEBOOK: [www.facebook.com/blmoregon](http://www.facebook.com/blmoregon)  
FLICKR: [www.flickr.com/photos/blmoregon](http://www.flickr.com/photos/blmoregon)



YOUTUBE: [www.youtube.com/user/blmoregon](http://www.youtube.com/user/blmoregon)  
TWITTER: [www.twitter.com/blmoregon](http://www.twitter.com/blmoregon)

Roseburg District Office

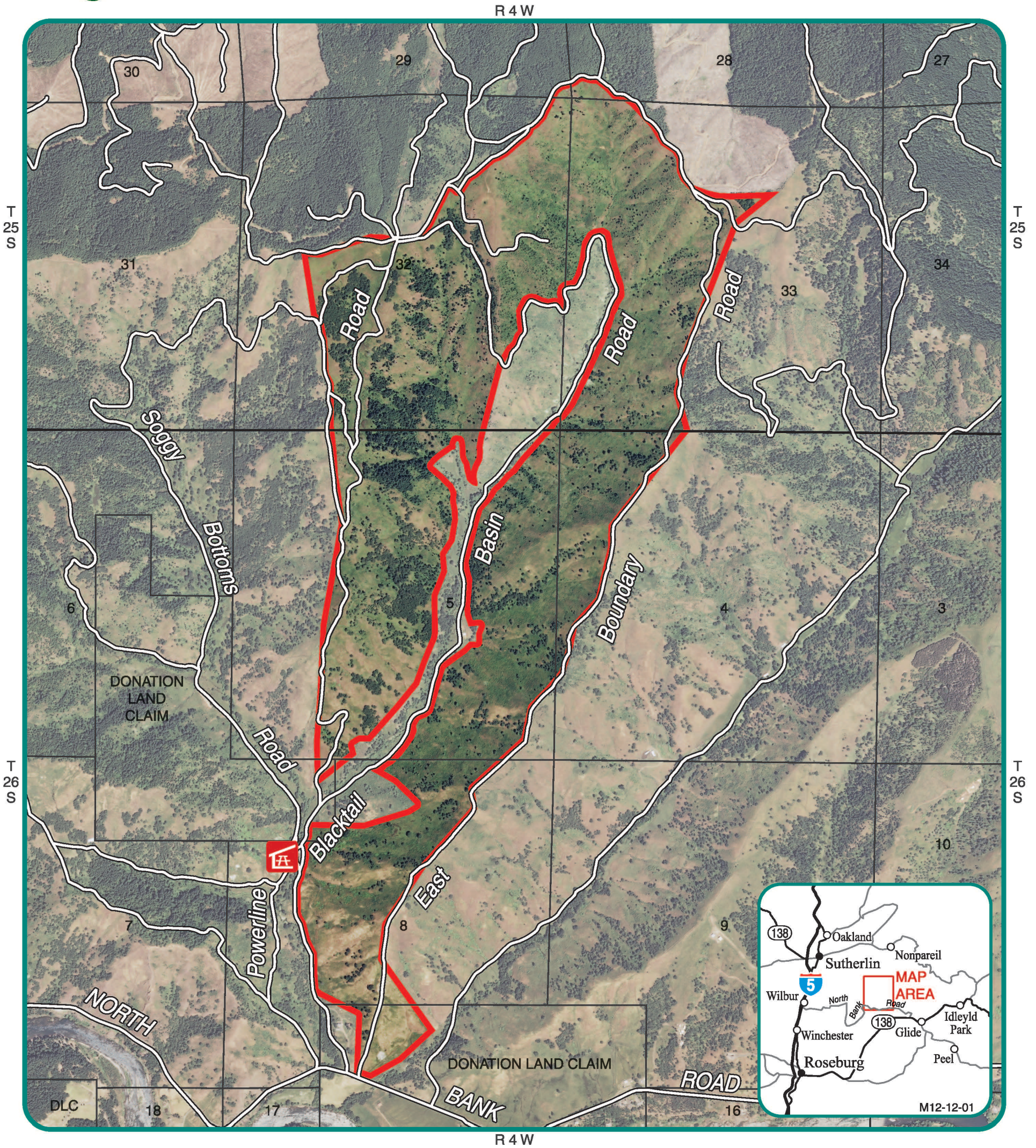
BLM







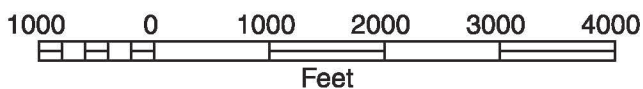
# NORTH BANK HABITAT MANAGEMENT AREA

## TEST GRAZING AREA

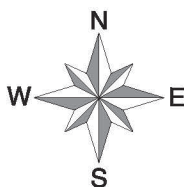


**LEGEND**

-  Comstock Day Use Area
-  Test Grazing Area



No warranty is made by the Bureau of Land Management as to the accuracy, reliability, or completeness of these data for individual or aggregate use with other data. Original data were compiled from various sources. This information may not meet National Map Accuracy Standards. This product was developed through digital means and may be updated without notification.



*It is unlawful to trespass on private lands. State hunting and fishing regulations apply to private lands. Landowners are not required to post or fence their lands. Check with private landowners before entering their property.*

**U. S. Department of the Interior**  
**Bureau of Land Management**  
**Roseburg District**  
**777 NW Garden Valley Blvd.**  
**Roseburg, OR 97471**  
**(541) 440-4930**