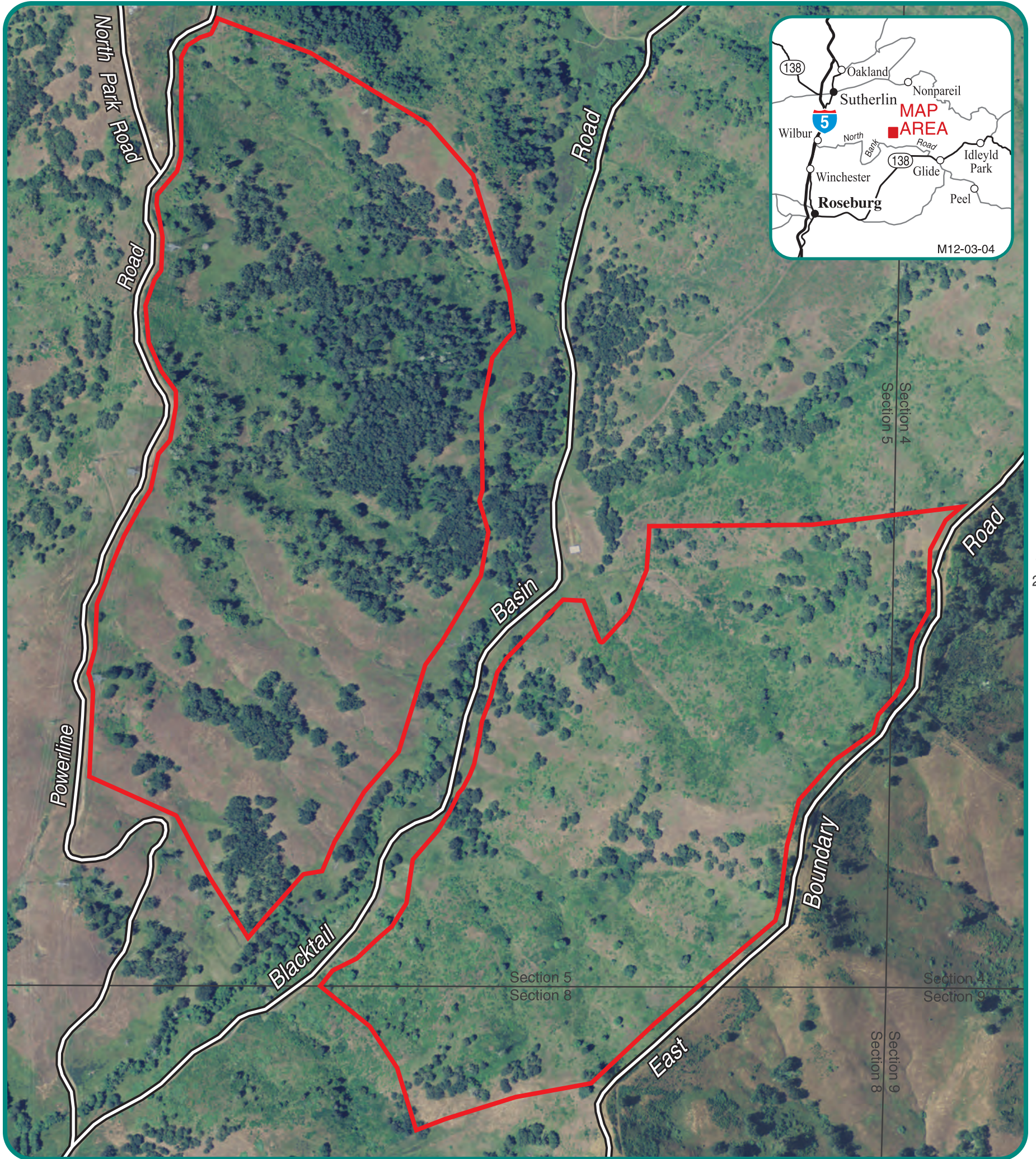




NORTH BANK HABITAT MANAGEMENT AREA

GRAZING AREAS

R 4 W



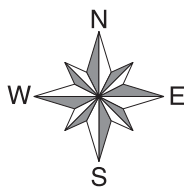
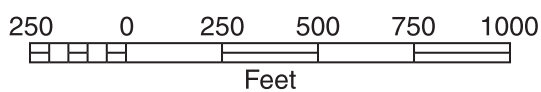
T 26 S

T 26 S

R 4 W

LEGEND

 Current Grazing Units



No warranty is made by the Bureau of Land Management as to the accuracy, reliability, or completeness of these data for individual or aggregate use with other data. Original data were compiled from various sources. This information may not meet National Map Accuracy Standards. This product was developed through digital means and may be updated without notification.

It is unlawful to trespass on private lands. State hunting and fishing regulations apply to private lands. Landowners are not required to post or fence their lands. Check with private landowners before entering their property.

U. S. Department of the Interior
Bureau of Land Management
Roseburg District
777 NW Garden Valley Blvd.
Roseburg, OR 97471
(541) 440-4930