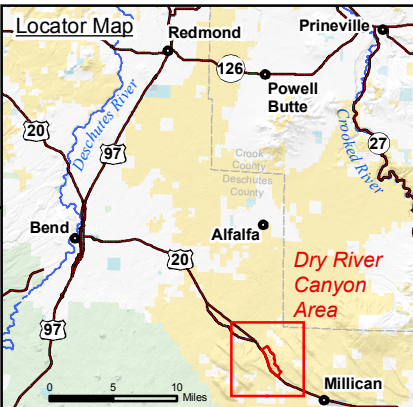


Dry River Canyon Trail

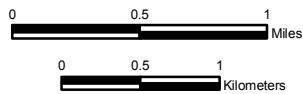
Legend

- Information
- Trailheads
- Highways
- Roads
- Non-Motorized Trails
- Seasonal Wildlife Closure
- Bureau of Land Management
- U.S. Forest Service
- State
- Private
- Geology Wayside
- No Parking

Administered Lands



5000 meter Universal Transverse Mercator grid ticks, Zone 10 N, NAD 83 (shown in black)
 Decimal Degrees grid ticks, NAD 83 (shown in red) Contour Interval 100 feet (shown in brown)



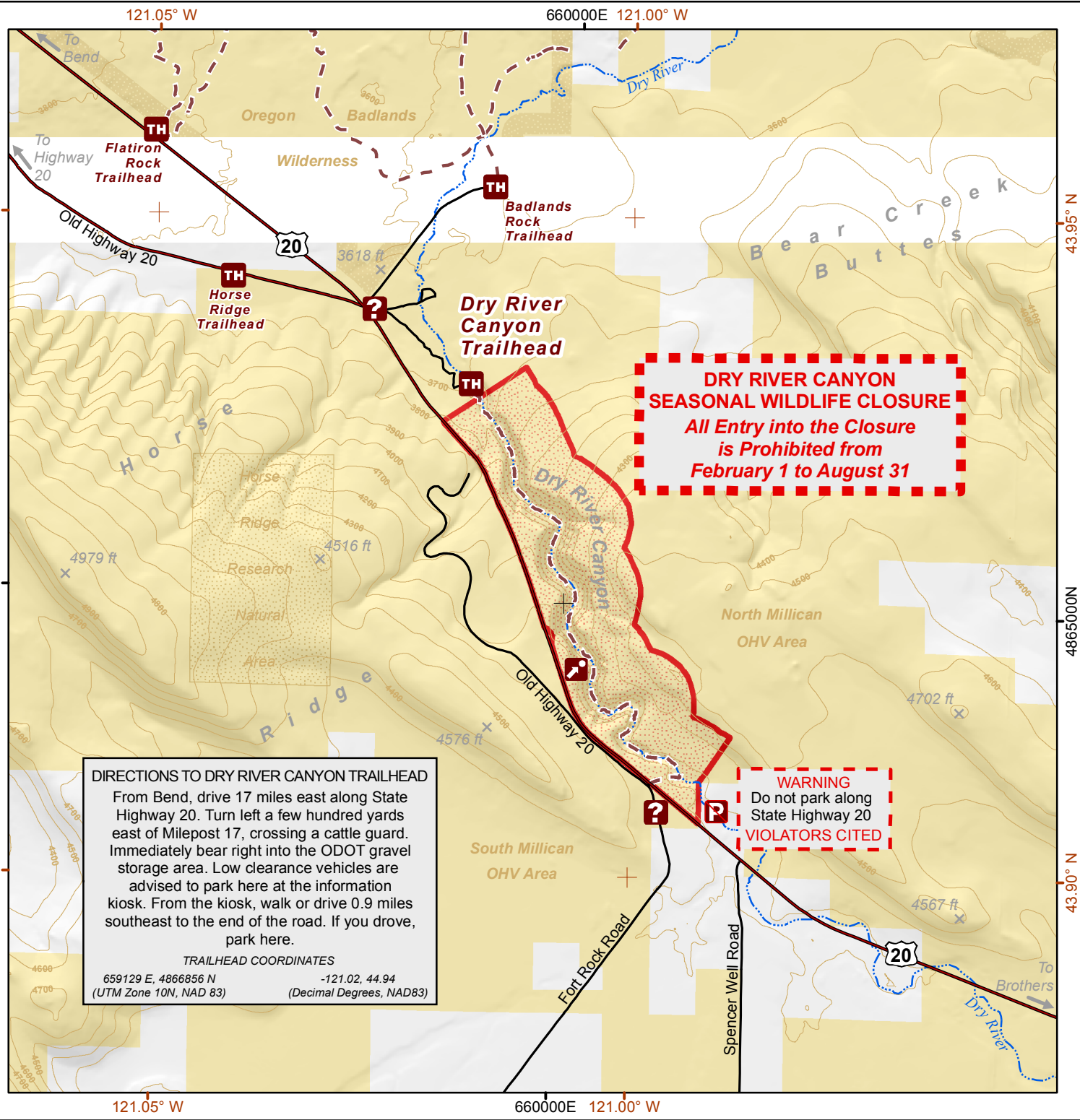
U.S. DEPARTMENT OF THE INTERIOR
 Bureau of Land Management



PRINEVILLE DISTRICT

3050 NE Third Street, Prineville, OR 97754
 Phone: 541-416-6700

No warranty is made by the Bureau of Land Management as to the accuracy, reliability, or completeness of these data for individual or aggregate use with other data. Original data were compiled from various sources and may be updated without notification.



DIRECTIONS TO DRY RIVER CANYON TRAILHEAD

From Bend, drive 17 miles east along State Highway 20. Turn left a few hundred yards east of Milepost 17, crossing a cattle guard. Immediately bear right into the ODOT gravel storage area. Low clearance vehicles are advised to park here at the information kiosk. From the kiosk, walk or drive 0.9 miles southeast to the end of the road. If you drove, park here.

TRAILHEAD COORDINATES
 659129 E, 4866856 N -121.02, 44.94
 (UTM Zone 10N, NAD 83) (Decimal Degrees, NAD83)

DRY RIVER CANYON SEASONAL WILDLIFE CLOSURE
 All Entry into the Closure is Prohibited from February 1 to August 31

WARNING
 Do not park along State Highway 20
VIOLATORS CITED