



# Spring Basin Wilderness Area

## Visitor Information

In March 2009, 6,403 acres of Bureau of Land Management lands were designated by Congress as the Spring Basin Wilderness. As a designated wilderness, the Spring Basin Wilderness enjoys the highest level of permanent protection. Ongoing land exchanges between the BLM and the Confederated Tribes of Warm Springs and others will result in approximately 3000 additional acres as wilderness when completed.

### Getting There:

Spring Basin is located approximately three hours southeast of Portland and two hours northeast of Bend, Oregon. When driving on Highway 218, turn south on Clarno road, located one mile east of the John Day River. Follow this graveled county road 3.5 miles to the BLM kiosk and unimproved parking area at the base of Spring Basin.

To access the wilderness from Spring Basin trailhead, visitors can travel cross-country north for 0.4 miles until a trail intersects your route. Turn east (right) on this trail where this canyon bottom trail ascends steeply to the ridgetop. Visitors can also hike or horseback ride south from the trailhead on the county road for 1.5 miles passing through a gate until a spur trail, marked by a brown post, forks to the east. Take this fork and the trail leads to Spring Basin Canyon. Motorized vehicles are not allowed on Clarno Road beyond a point immediately south of the Spring Basin trailhead.

**Trailhead/parking coordinates:** Latitude: 44.86904, Longitude: -120.44006

### Please respect the following rules and regulations:

- Motorized and Mechanized Vehicle Use:
  - Motorized & mechanized vehicles including bicycles and game carts are prohibited within the wilderness.
- Private Property:
  - Private land within the legislated wilderness boundary, including the Pine Creek Conservation Area, remains off-limits until completion of the land exchanges.
  - The public/private property boundary of the Spring Basin wilderness is not marked and visitors should take proper care not to trespass on private property.
- Leave No Trace:
  - Leave a clean camp by practicing the “Pack it In, Pack it Out” ethic and leave the site better than as you found it.
  - Give wildlife a break: camp away from watering areas.
  - Use dead and down wood for campfires; the cutting of live vegetation or standing dead trees is prohibited.
  - Use the ‘cathole’ method of removing your waste: dig a hole 6”-8” deep and bury your waste. Do not burn your toilet paper.



# SPRING BASIN WILDERNESS AREA

R 19 E

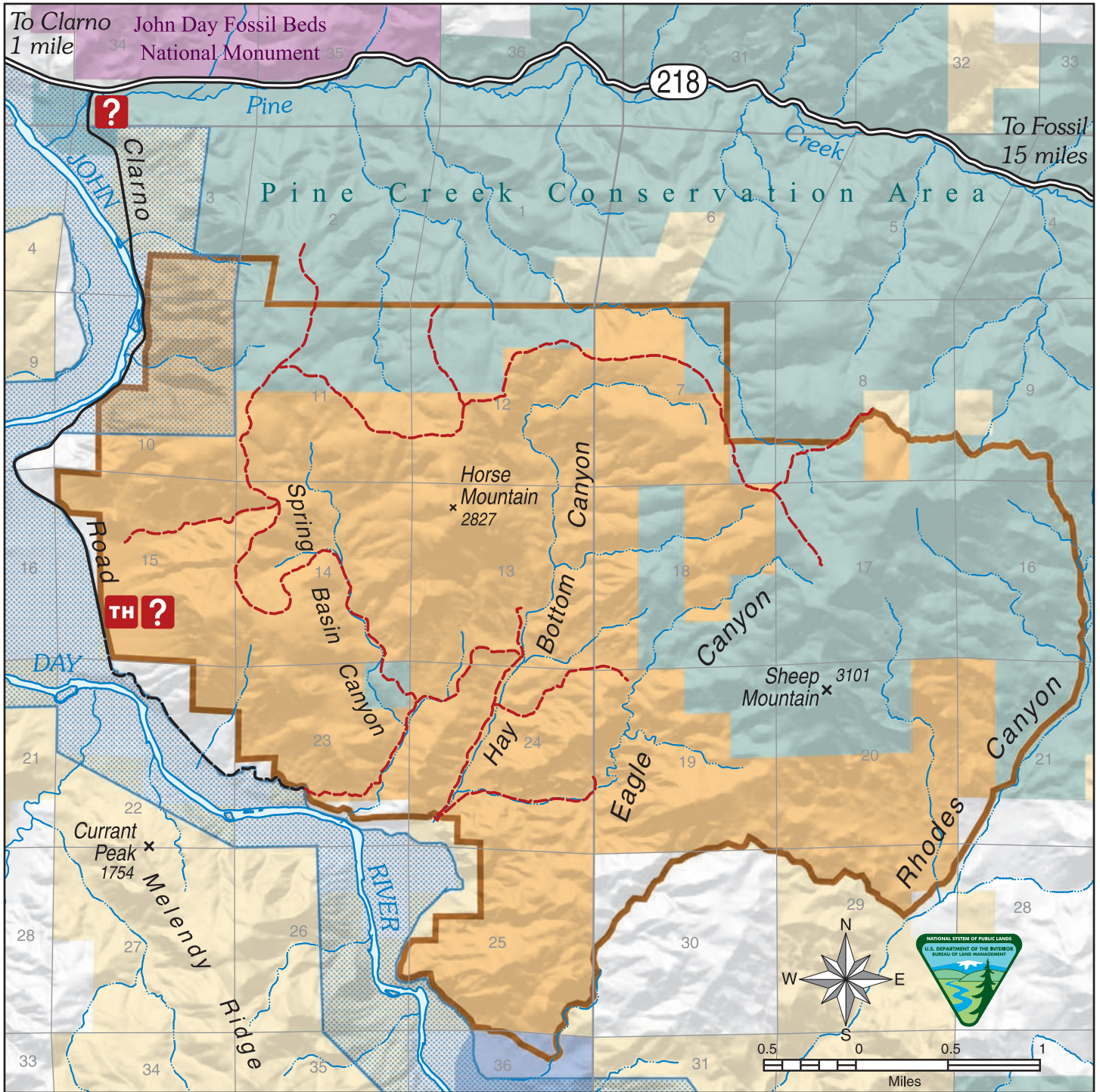
R 20 E

T 7 S

T 7 S

T 8 S

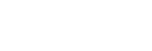
T 8 S



State Highway



County Road



Non-Motorized Road



Trail



Information



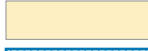
Trailhead



Spring Basin Wilderness Boundary



Spring Basin Wilderness



Other Bureau of Land Management



Federal Wild & Scenic River Corridor



Confederated Tribes of Warm Springs



National Park Service



State



Private

US DEPARTMENT OF THE INTERIOR  
Bureau of Land Management  
Prineville District  
Central Oregon Resource Area

Surface management and land ownership is subject to ongoing change. Contact the BLM Prineville District office for further information.



No warranty is made by the Bureau of Land Management as to the accuracy, reliability, or completeness of these data for individual or aggregate use with other data. Original data were compiled from various sources. This information may not meet National Map Accuracy Standards. This product was developed through digital means and may be updated without notification.