

Year: 2011

Inventory Unit Number/Name: Green Mountain/OR-015-021C

FORM 1

DOCUMENTATION OF BLM WILDERNESS INVENTORY FINDINGS ON RECORD

1. Is there existing BLM wilderness inventory information on all or part of this area?

No _____ (go to Form 2) Yes X (if more than one unit is within the area, list the names/numbers of those units.)

a) Inventory Source: U.S. Department of the Interior. Bureau of Land Management. Wilderness Inventory. Oregon and Washington. Final Intensive Inventory Decisions. (November 1980. Page 41)

b) Historic Inventory Unit Name(s)/Number(s): South Green Mountain/OR-1-21B

c) Map Name(s)/Number(s) U.S. Department of the Interior. Bureau of Land Management. Oregon. Intensive Wilderness Inventory. Final Decisions. (November 1980)

d) BLM District(s)/Field Office(s): Lakeview District/Lakeview Resource Area

2. BLM Inventory Findings on Record

Existing inventory information regarding wilderness characteristics (if more than one BLM inventory unit is associated with the area, list each unit/acreage and answer each question individually for each inventory unit):

OR-1-21B South Green Mountain	Size (historic acres)	Natural Condition? Y/N	Outstanding Solitude? Y/N	Outstanding Primitive & Unconfined Recreation? Y/N	Supplemental Values? Y/N
BLM	14,320	Y	N	N	N/A

Summarize any known primary reasons for prior inventory findings listed in this table:
The previous inventory found unit OR-1-21B to be in a natural condition with only minor impacts of man present citing pasture fences and a way as the only significant disturbances. No outstanding opportunity for solitude existed within the unit as a whole, with topographic and vegetative screening decreasing from north to south. The unit offered some opportunities for hiking, wildlife observation, and hunting, but the unit as a whole

was determined not to have outstanding opportunities for primitive recreation based on size, topography, and the absence of interest features. No supplemental values were found to be present in this unit. The unit was eliminated from further review in 1980.

FORM 2

DOCUMENTATION OF CURRENT WILDERNESS INVENTORY CONDITIONS

a. **Unit Number/Name:** Green Mountain/OR-015-021C

(1) **Is the unit of sufficient size?** Yes X No _____

Boundary Determination: In 2008, 2009, and 2010 the BLM conducted field inventory of the area to update its road and wilderness inventories. This field work included photo documentation of the boundary routes. Using BLM photos, field logs, and staff field knowledge, a BLM inter-disciplinary (ID) team completed an analysis of the motorized routes within the area in December of 2010 and documented its boundary road determinations in a series of route analysis forms..

On the north, the unit is bounded by a BLM Unnumbered road that runs generally east-west through Sections 3 and 4 of T26S-R17E. On the west the unit is bounded by a combination of BLM, Municipal, and Private roads; unnumbered north-south running road in Section 8, T26S-R17E, 6109-AA (Bowman Well Road), unnumbered southeast running road that originates in Section 16, T26S-R17E, unnumbered private ROW, and Municipal Road 9-21 . On the east, the unit is bounded by road 6109-D (Lava Craters Road). On the south the unit is bounded by private lands. At approximately 5,474 acres, the Green Mountain Unit/OR-015-021C meets the size criteria. See Map 2, route analysis forms, photos, photo logs, and BLM ID team minutes in the wilderness inventory file for additional supporting information regarding these boundary determinations.

Following the unit boundary determination, a BLM ID team conducted an inter-disciplinary evaluation of the current wilderness characteristics within the unit boundary. The results are contained in the following section. Additional background on the process that the BLM ID team followed during this evaluation is contained in the ID team meeting notes and the document, *Wilderness Inventory Maintenance Process for the Lakeview Resource Area, BLM*. Both documents are contained in the wilderness inventory file.

DESCRIPTION OF CURRENT CONDITIONS:

The inventory unit is comprised of approximately 5,474 acres of BLM administered land and is located approximately 9 miles north of the Christmas Valley Municipality (Map 1). The unit is rectangle shaped and measures approximately 3.5 long by 2.5 miles wide. The majority of this unit is a sagebrush flat located above a bench on the north edge of Christmas Valley. The unit contains scattered juniper throughout which increases slightly in density toward the north boundary of the unit. The unit contains a 640 acre private inholding which partially forms the southwest boundary.

(2) Is the unit in a natural condition? Yes ___ No X

Primitive motorized routes exist within the unit totaling about 3.7 miles. Range improvements also exist within the unit; approximately 4.5 miles of pasture division fence, 4 water storage tanks, 2 water troughs, 1 well, and 0.2 miles of water pipeline. Refer to the *Disturbance Summaries Table* below:

Green Mountain Area Inventory Unit OR-015-021C	
Acres	5474
Water Developments	
-Storage Tank	4
-Water Trough	2
-Well	1
Closed Routes (miles)	.25
Primitive Motorized Routes (miles)	2.8
Motorized Trails (miles)	.9
Pasture Fence (miles)	4.5
Pipelines (miles)	.2
Prescribed Fire (acres)	101

The man-made disturbances within the unit as a whole have increased substantially since the last inventory. The decrease in unit size coupled with an increase in developments has led to a higher density of water developments, mileage of pasture fences, and primitive motorized trails which are easily noticeable by the casual observer when moving throughout the unit. The most notable disturbance is a 640 acre private inholding that is just outside the west central boundary of the unit (Map 2). Considering the limited screening provided by the vegetation and topography, the disturbances within the private inholding cannot be avoided from most of the unit.

For the reasons specified above and based on a review of all of the available information including BLM photos, staff knowledge, and field review, the ID team concluded that conditions have changed since 1980 and the unit is no longer in a natural condition free from the works of man.

(3) Does the unit (or the remainder of the unit if a portion has been excluded due to unnaturalness and the remainder is of sufficient size) have outstanding opportunities for solitude?

Yes _____ No _____ N/A X

Inventory unit OR-015-021C was not evaluated for solitude because the unit failed to meet the minimum naturalness criteria.

(4) Does the unit (or the remainder of the unit if a portion has been excluded due to unnaturalness and the remainder is of sufficient size) have outstanding opportunities for primitive and unconfined recreation?

Yes _____ No _____ N/A X _____

Inventory unit OR-015-021C was not evaluated for recreation opportunities in the current inventory because the unit failed to meet the minimum naturalness criteria.

(5) Does the unit have supplemental values?

Yes ___ No _____ N/A X _____

Supplemental values were not evaluated in the current inventory because the unit failed to meet the naturalness criteria.

Summary of Findings and Conclusion

Unit Name and Number: Green Mountain Unit/OR-015-021C

Summary Results of Analysis:

1. Does the area meet the size requirements? X Yes ___ No
2. Does the area appear to be natural? ___ Yes X No
3. Does the area offer outstanding opportunities for solitude or a primitive and unconfined type of recreation? ___ Yes ___ No X N/A
4. Does the area have supplemental values? ___ Yes ___ No X N/A

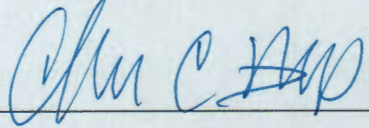
Conclusion (Check One):

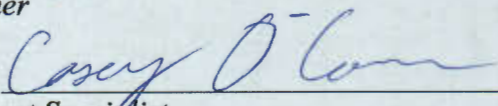
_____ **The area- or a portion of the area- has wilderness character:**
(items 1, 2 and 3 must be checked "yes").

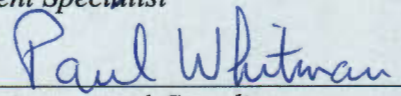
X **The area does not have wilderness character:** (any of items 1, 2 and 3 are checked "no")

Green Mountain
(1)

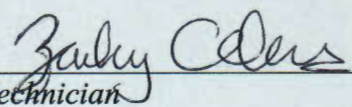
ID Team Members:

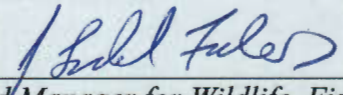
Chris Bishop  Date: 3/14/11
Recreation Planner

Casey O'Connor  Date: 3/8/11
Range Management Specialist

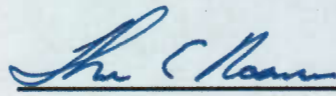
Paul Whitman  Date: 3/9/2011
Planning and Environmental Coordinator

Edward Hennagin  Date: 3/8/2011
Cartographic Technician

Zach Adams  Date: 3/12/2011
Cartographic Technician

Todd Forbes  Date: 3/8/11
Associate Field Manager for Wildlife, Fisheries, Riparian, Hydrology, Wilderness, Recreation,
and Cultural

Approved by:


Tom Rasmussen, Field Manager

3/14/11
Date

This form documents information that constitutes an inventory finding on wilderness characteristics. It does not represent a formal land use allocation or a final agency decision subject to administrative remedies under either 43 CFR parts 4 or 1610.5-2.

Year 2011

Inventory Unit Number/Name: Green Mountain Area Inventory Units<5,000 Acres

FORM 1

DOCUMENTATION OF BLM WILDERNESS INVENTORY FINDINGS ON RECORD

1. Is there existing BLM wilderness inventory information on all or part of this area?

No _____ (go to Form 2) Yes X (if more than one unit is within the area, list the names/numbers of those units.)

a) Inventory Source: U.S. Department of the Interior. Bureau of Land Management. Wilderness Inventory. Oregon and Washington. Final Intensive Inventory Decisions. (November 1980. Page 41)

b) Inventory Unit Name(s)/Number(s): South Green Mountain/OR-1-21B & OR1-21A

c) Map Name(s)/Number(s): U.S. Department of the Interior. Bureau of Land Management. Oregon. Intensive Wilderness Inventory. Final Decisions. (November 1980)

d) BLM District(s)/Field Office(s): Lakeview District/Lakeview Resource Area

2. BLM Inventory Findings on Record

Existing inventory information regarding wilderness characteristics (if more than one BLM inventory unit is associated with the area, list each unit/acreage and answer each question individually for each inventory unit):

South Green Mountain OR-1-21B	Size (historic acres)	Natural Condition? Y/N	Outstanding Solitude? Y/N	Outstanding Primitive & Unconfined Recreation? Y/N	Supplemental Values? Y/N
BLM	14,320	Y	N	N	N/A

Summarize any known primary reasons for prior inventory findings listed in this table:

The previous inventory found unit OR-1-21B to be in a natural condition with only minor impacts of man present citing pasture fences and an intrusion way as the only significant disturbances. No outstanding opportunity for solitude existed within the unit as a whole, with topographic and vegetative screening decreasing from north to south. The unit offered some opportunities for hiking, wildlife observation, and hunting, but the unit as a whole

was determined not to have outstanding opportunities for primitive recreation based on size, topography, and the absence of interest features. No supplemental values were found to be present in this unit. The unit was eliminated from further review in 1980.

Historic Unit OR-1-21A dropped out of the 1980 inventory due to small size.

NOTE: Green Mountain Area Inventory Unit OR-015-021C lies within the boundary of this historic unit and currently meets the minimum size criteria and has been evaluated separately.

FORM 2

DOCUMENTATION OF CURRENT WILDERNESS INVENTORY CONDITIONS

a. **Unit Number/Name:** Green Mountain Area Inventory Units<5,000 Acres

(1) **Is the unit of sufficient size?** Yes _____ No X

Boundary Determination: In 2008, 2009, and 2010 the BLM conducted field inventory of the area to update its road and wilderness inventories. This field work included photo documentation of the boundary routes. Using BLM photos, field logs, and staff field knowledge, a BLM inter-disciplinary (ID) team completed an analysis of the motorized routes within the area in December of 2010 and documented its boundary road determinations in a series of route analysis forms.

On the south, the units are bounded by private lands. On the north, the units are bounded by Lake County Road 5-12B. On the east, the units are bounded by BLM Road 6109-D (Lava Craters Road) and private lands. On the west, the units are bounded by private lands. See Map 2, route analysis forms, photos, photo logs, and BLM ID team minutes in the wilderness inventory file for additional supporting information regarding these boundary determinations). None of these units meet the minimum size criteria or any of the exceptions to the size criteria.

There are a total of 19 inventory units within the Green Mountain Area. One of the units meets minimum size criteria and has been evaluated separately (Green Mountain Unit/OR-015-021C). The 18 remaining units are well under the minimum size criteria. The average size of these units is 1,718.4 acres. They range from 36 acres to 3,776 acres and do not meet any exception to the size requirement.

Following the unit boundary determination, a BLM ID team conducted an inter-disciplinary evaluation of the current wilderness characteristics within the unit boundary. The results are contained in the following section. Additional background on the process that the BLM ID team followed during this evaluation is contained in the ID team meeting notes and the document, *Wilderness Inventory Maintenance Process for the Lakeview Resource Area, BLM*. Both documents are contained in the wilderness inventory file.

DESCRIPTION OF CURRENT CONDITIONS:

The 18 unnumbered inventory units are comprised of approximately 30,931 acres of BLM administered land and are located about 9 miles north of Christmas Valley, Oregon (Map 1). The units lie in the northern part of the Christmas Valley and the slopes of Green Mountain. The terrain is mostly sagebrush flats with areas of low-rolling hills, sloping benches, and rocky outcrops which are populated by sagebrush and juniper that varies in density from sparse to medium. Major human activities in the area include hunting, ranching, woodcutting, and OHV recreation.

(2) Is the unit in a natural condition? Yes ___ No ___ N/A X

The current natural condition of these units was not evaluated because the units failed to meet the minimum size requirement.

(3) Does the unit (or the remainder of the unit if a portion has been excluded due to unnaturalness and the remainder is of sufficient size) **have outstanding opportunities for solitude?** Yes _____ No _____ N/A X

The current opportunities for solitude within these units were not evaluated because the units failed to meet the minimum size requirement.

(4) Does the unit (or the remainder of the unit if a portion has been excluded due to unnaturalness and the remainder is of sufficient size) **have outstanding opportunities for primitive and unconfined recreation?** Yes _____ No _____ N/A X

The current opportunities for recreation within these units were not evaluated because the units failed to meet the minimum size requirement.

(5) Does the unit have supplemental values? Yes ___ No ___ N/A X

Supplemental value was not evaluated within these units because the units failed to meet the minimum size requirement.

Summary of Findings and Conclusion

Unit Name and Number: Green Mountain Area Inventory Units<5,000 Acres

Summary Results of Analysis:

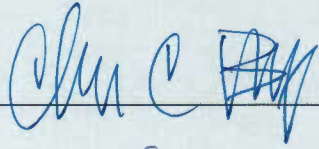
- 1. Does the area meet the size requirements? ___ Yes X No
- 2. Does the area appear to be natural? ___ Yes ___ No X N/A
- 3. Does the area offer outstanding opportunities for solitude or a primitive and unconfined type of recreation? ___ Yes ___ No X N/A
- 4. Does the area have supplemental values? ___ Yes ___ No X N/A

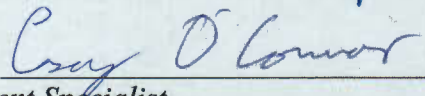
Conclusion (Check One):

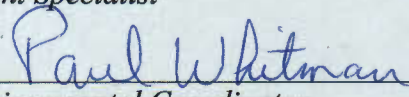
 The area- or a portion of the area- has wilderness character:
(items 1, 2 and 3 must be checked "yes").


 X **The area does not have wilderness character:** *(any of items 1, 2 and 3 are checked "no").*

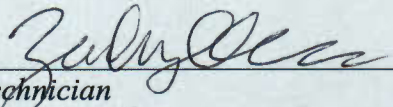
ID Team Members:

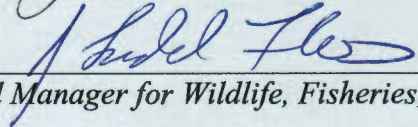
Chris Bishop  Date: 3/14/11
Recreation Planner

Casey O'Connor  Date: 3/8/11
Range Management Specialist

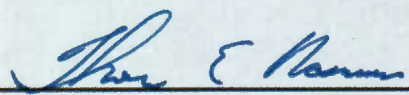
Paul Whitman  Date: 3/9/2011
Planning and Environmental Coordinator

Edward Hennagin  Date: 3/8/11
Cartographic Technician

Zach Adams  Date: 3/12/2011
Cartographic Technician

Todd Forbes  Date: 3/8/11
Associate Field Manager for Wildlife, Fisheries, Riparian, Hydrology, Wilderness, Recreation,
and Cultural

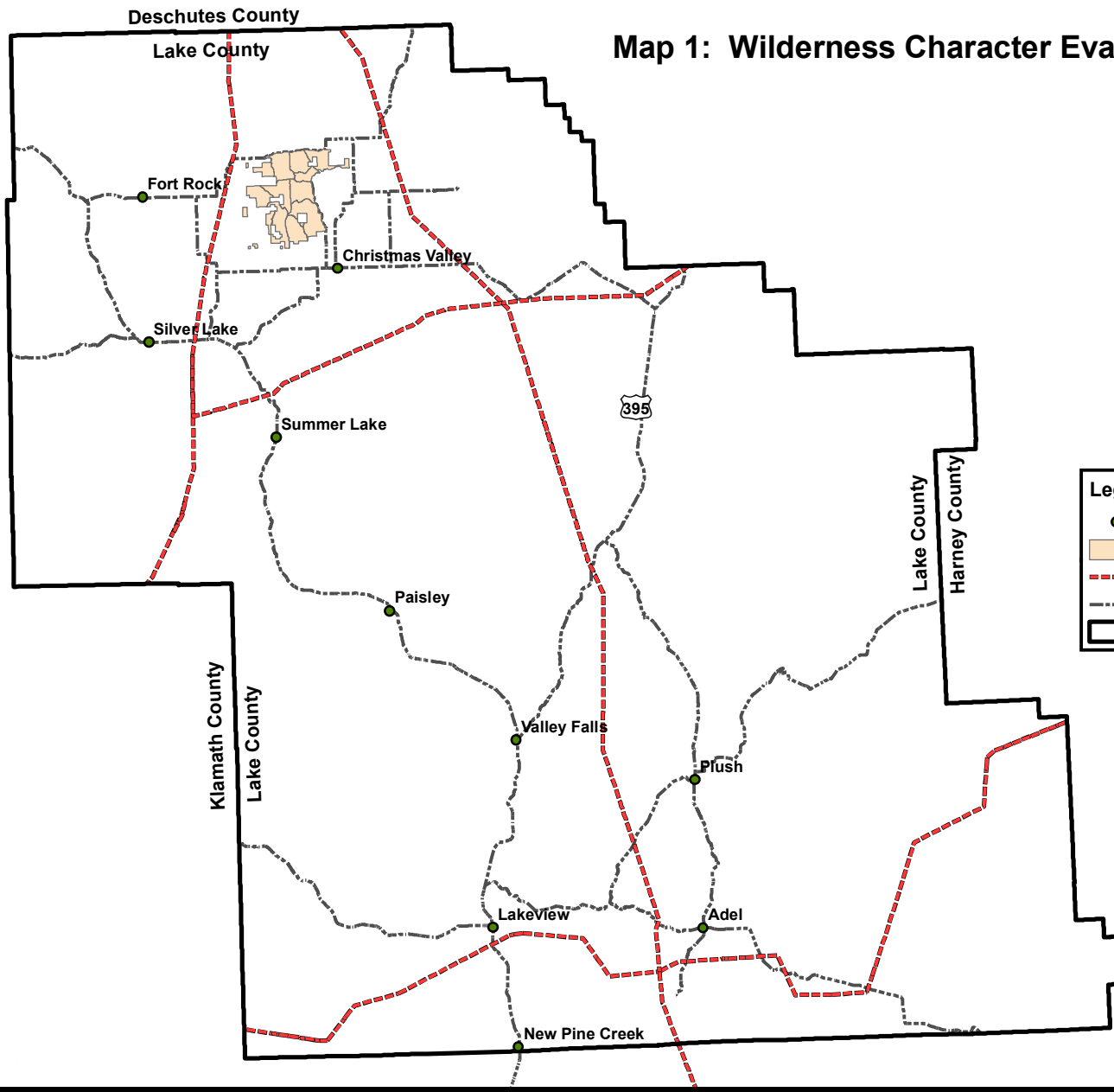
Approved by:


Tom Rasmussen, Field Manager

3/14/11
Date

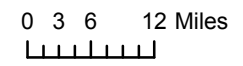
This form documents information that constitutes an inventory finding on wilderness characteristics. It does not represent a formal land use allocation or a final agency decision subject to administrative remedies under either 43 CFR parts 4 or 1610.5-2.

Map 1: Wilderness Character Evaluation Area

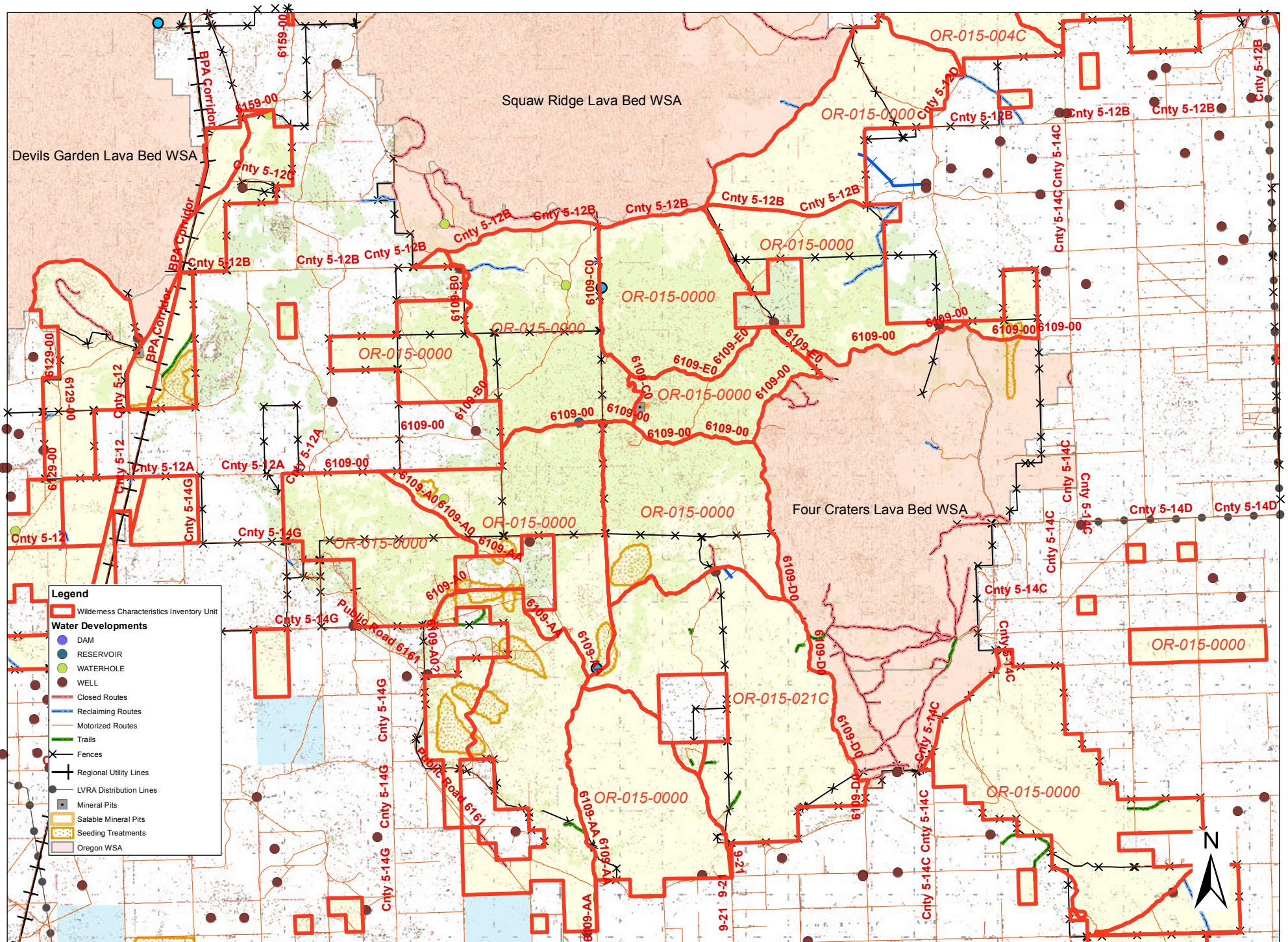


Legend

- Cities
- Green Mountain Area Inventory Units
- Major Utility Corridors
- Major Roads
- Resource Area Boundary

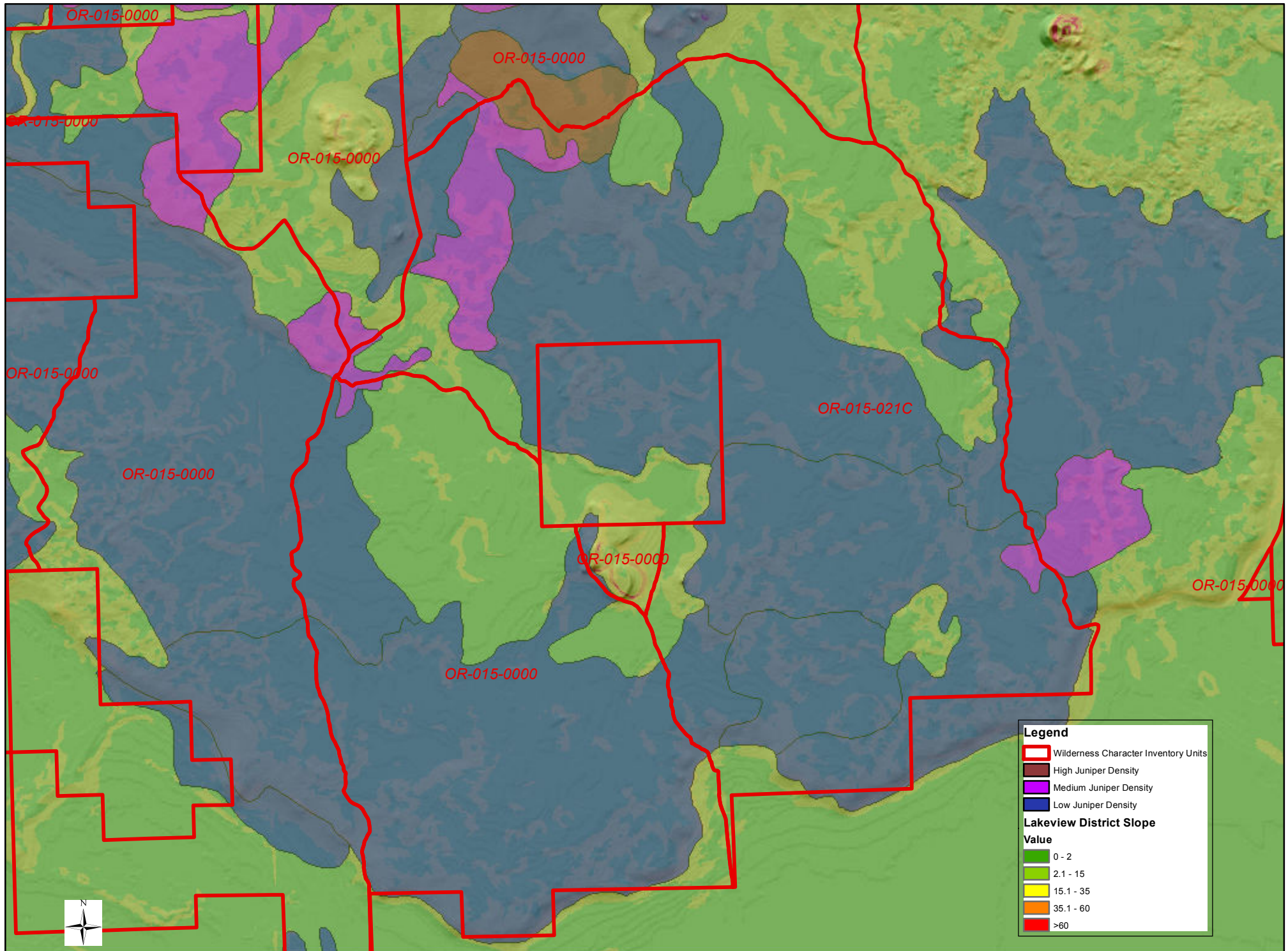


No warranty is made by the Bureau of Land Management as to the accuracy, availability, or completeness of these data. For individuals or agencies who use other data, original data were compiled from various sources. This information may not meet National Map Accuracy Standards. This product was developed through digital means and may be updated without notification.



Map 2 - Wilderness Character in Green Mountain Area

0 0.45 0.9 1.8 2.7
Miles



0 0.25 0.5 1 Miles

Map 3 - Screening in Green Mountain Area