

Year 2010

Inventory Unit Number/Name: Diablo West/OR-015-206

FORM 1

DOCUMENTATION OF BLM WILDERNESS INVENTORY FINDINGS ON RECORD

1. Is there existing BLM wilderness inventory information on all or part of this area?

No X (go to Form 2) Yes _____ (if more than one unit is within the area, list the names/numbers of those units.)

a) Inventory Source:

b) Inventory Unit Name(s)/Number(s): _____

c) Map Name(s)/Number(s):

d) BLM District(s)/Field Office(s): Lakeview District/Lakeview Resource Area

2. BLM Inventory Findings on Record

Existing inventory information regarding wilderness characteristics (if more than one BLM inventory unit is associated with the area, list each unit/acreage and answer each question individually for each inventory unit):

Unit#/Name	Size (historic acres)	Natural Condition? Y/N	Outstanding Solitude? Y/N	Outstanding Primitive & Unconfined Recreation? Y/N	Supplemental Values? Y/N
BLM					
Other					

Summarize any known primary reasons for prior inventory findings listed in this table):

FORM 2

DOCUMENTATION OF CURRENT WILDERNESS INVENTORY CONDITIONS

a. **Unit Number/Name:** Diablo West/OR-015-206

(1) **Is the unit of sufficient size?** Yes X No _____

At approximately 4,418 acres, this unit does not meet the size criteria. However, it does meet one of the exceptions to the size criteria; namely that it lies immediately adjacent to the BLM's Diablo Mountain Contiguous WSA (OR-1-58) located to the east.

Boundary Determination: In 2008, 2009, and 2010 the BLM conducted field inventory of the area to update its road and wilderness inventories. This field work included photo documentation of the boundary routes. Using BLM photos, field logs, and staff field knowledge, a BLM inter-disciplinary (ID) team completed an analysis of the motorized routes within the area in November of 2010.

On the east and south, the unit is bounded by the 118,799 acre Diablo Mountain Contiguous WSA (OR-1-58). A 0.5 mile portion of the WSA's western boundary road was found to be reclaiming in 2010 and is now considered to be a cherry-stem boundary. For this reason, the Diablo West Unit is no longer separated by a complete boundary road and is contiguous with the existing WSA. On the west, the unit is bounded by private lands and BLM Unnumbered Route #5. On the north, the unit is bounded by BLM Road 6104-C0/Coyote Bedground Road, (see Map 2, road analysis forms, photos, photo logs, and BLM ID team minutes in the wilderness inventory file for additional supporting information regarding these boundary determinations).

Following the unit boundary determination, a BLM ID team conducted an inter-disciplinary evaluation of the current wilderness characteristics within the unit boundary. The results are contained in the following section. Additional background on the process that the BLM ID team followed during this evaluation is contained in the ID team meeting notes and the document, *Wilderness Inventory Maintenance Process for the Lakeview Resource Area, BLM*. Both documents are contained in the wilderness inventory file.

DESCRIPTION OF CURRENT CONDITIONS:

The inventory unit is comprised of approximately 4,418 acres of BLM administered land and is located about 22 miles east-southeast of Silver Lake, Oregon. The unit lies in the northern part of the Summer Lake Basin. The terrain is mostly flat with areas of low-rolling sand dunes, which are populated by short and tall sagebrush that varies in density from sparse to thick. Major human activities in the area include hunting, ranching, and OHV recreation.

(2) Is the unit in a natural condition? Yes X No _____

The previous inventory did not include information on the natural character of this unit because it did not meet the minimum size criteria. However, the adjacent Diablo Mountain WSA unit (OR-1-58) was found to meet the naturalness criteria in 1979.

Primitive motorized routes exist within the unit totaling about 4.1 miles. Approximately 0.5 miles of pasture division fence exists within the unit (Map 2). The routes and trails are dispersed mostly throughout the southern half of the unit. The roads, routes, and trails in this area connect a mosaic of BLM and private land.

The southwestern half of the unit has a long and narrow shape which is surrounded by private land, meaning that human developments are closer in proximity and disturbances are more evident. Human developments and disturbances are also observable from the northeastern half of the unit due to the low relief of the terrain and lack of screening (Map 3), but only to the west and south. This portion of the unit is immediately adjacent to Diablo Mountain WSA with only a cherry-stem route as a partial boundary.

The density of human disturbances within the unit as a whole is relatively low, with off road vehicle (OHV) use being the significant disturbance to naturalness. However, the patch-work of BLM and private lands make the shape of this unit irregular, and in such close proximity to human activity as to make the unit natural in the northeastern half and only marginally natural in the southwestern portion.

For the reasons specified above and based on a review of all of the available information including BLM photos, staff knowledge, and field review, the ID team concluded that the unit as a whole is in a marginally natural condition.

(3) Does the unit (or the remainder of the unit if a portion has been excluded due to unnaturalness and the remainder is of sufficient size) **have outstanding opportunities for solitude?** Yes X No _____ N/A _____

The previous inventory did not include information on the opportunities for solitude within this unit because it did not meet the minimum size criteria. However, the adjacent Diablo Mountain WSA unit (OR-1-58) was found to have outstanding opportunities for solitude in 1979, primarily due to rugged topography and large size. Since the previous inventory, a portion of the Diablo Mountain WSA's western boundary has been found to be reclaiming and has been deemed a partial cherry-stem boundary, thus making this unit contiguous with the WSA.

The Diablo West unit forms an irregular shape, intertwined with private land. The southwestern portion of the unit (about 1,900 acres) is very narrow and is bordered by private lands (Map 2). The northeastern (contiguous portion) forms a slightly larger block, approximately 2,500 acres.

The Lakeview RMP/ROD (Map R-7) shows the unit is open to off-highway vehicle (OHV) use. The open, motorized routes on the boundary and interior of the unit, along with the existing OHV designation increases the likelihood of encountering others within the unit, or hearing noise intrusions from motorized vehicles within or near the unit, particularly during the fall hunting season.

The northeastern portion of the unit would marginally enhance the solitude opportunities of the adjacent WSA. However, considering the gentle terrain, lack of adequate screening, and proximity to activities on private land (Map 3), it would be difficult to find solitude in the unit as a whole. For the reasons specified above and based on a review of all of the available information including BLM photos, staff knowledge, and field review, the ID team concluded that the northeastern half of the unit minimally enhances the outstanding opportunity for solitude within the adjacent Diablo Mountain Contiguous WSA.

(4) Does the unit (or the remainder of the unit if a portion has been excluded due to unnaturalness and the remainder is of sufficient size) **have outstanding opportunities for primitive and unconfined recreation?**

Yes _____ No X N/A _____

The previous inventory did not include information on the opportunities for primitive and unconfined recreation within this unit, because it did not meet the minimum size criteria. The much larger Diablo Mountain WSA (OR-1-58) to the east was found in 1979 to provide limited, but not outstanding opportunities for primitive and unconfined recreation.

The current unit forms a narrow irregular shape due to private land boundaries in the south. In the north east half (approximately 2,500 acres) of the unit, there exists less private land boundaries, which opens up the shape of the unit as one moves in the direction of Diablo Mountain WSA. On its own merit, it lacks adequate size to provide an outstanding opportunity for primitive or unconfined types of recreation.

Existing open primitive motorized routes (Map 2), easily traversable terrain, and the open OHV designation promotes motorized recreational access in much of the interior of the unit. This reduces the probability of being able to have an outstanding primitive (non-motorized) recreational experience.

The unit does not provide a single unique or unusual primitive recreational opportunity, nor does it provide a unique diversity of primitive recreation opportunities. The recreation opportunities provided within the unit are similar to those available on surrounding BLM-administered lands.

The larger Diablo Mountain WSA to the east provides some opportunities for dispersed recreation such as hiking. However, the majority of the WSA was found to lack distinctive topography, vegetation features, or dependable water sources necessary for an outstanding opportunity.

For these reasons, the ID team concluded that recreation opportunities within the unit, even when considered in connection with the adjacent WSA, are not outstanding.

(5) Does the unit have supplemental values? Yes _____ No X

The previous inventory did not include information on supplemental values within this unit because it did not meet the minimum size criteria. However, adjacent Diablo Mountain WSA (OR-1-58) to the east was found in 1979 to have no documented supplemental.

Based on the available information gathered through field inventory, photos, and adjacent WSA findings, the ID team found that this unit contains no supplemental values.

Summary of Findings and Conclusion

Unit Name and Number: Diablo West/OR-015-206

Summary Results of Analysis:

1. Does the area meet the size requirements? X Yes ___ No
2. Does the area appear to be natural? ___ X ___ Yes ___ No
3. Does the area offer outstanding opportunities for solitude or a primitive and unconfined type of recreation? ___ X ___ Yes ___ No
4. Does the area have supplemental values? ___ Yes X No

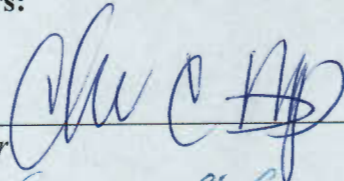
Conclusion (Check One):

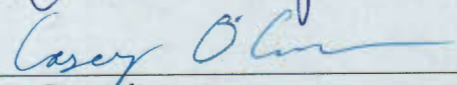
X **The area- or a portion of the area- has wilderness character:**
(items 1, 2 and 3 must be checked "yes").

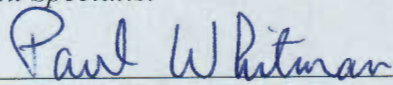
Note: The Northeastern portion (2,500 acres) of the unit minimally contributes or enhances the wilderness character present on the adjacent Diablo Mountain WSA. The southwestern portion (1,900 acres) of the unit does not.

_____ **The area does not have wilderness character:** *(any of items 1, 2 and 3 are checked "no").*

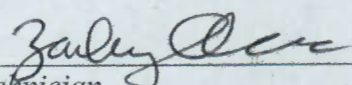
ID Team Members:

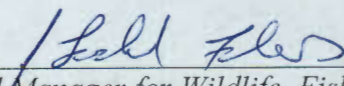
Chris Bishop  Date: 12/20/2010
Recreation Planner


Casey O'Connor  Date: 12/20/2010
Range Management Specialist

Paul Whitman  Date: 12/20/2010
Planning and Environmental Coordinator

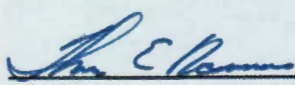
Edward Hennagin  Date: 12-15-2010
Cartographic Technician

Zach Adams  Date: 12/15/2010
Cartographic Technician

Todd Forbes  Date: 12-20-2010
Associate Field Manager for Wildlife, Fisheries, Riparian, Hydrology, Wilderness, Recreation,
and Cultural

Theresa Romasko  Date: 12/20/2010
Associate Field Manager for Range and Botany

Approved by:


Tom Rasmussen, Field Manager

12/20/10
Date

This form documents information that constitutes an inventory finding on wilderness characteristics. It does not represent a formal land use allocation or a final agency decision subject to administrative remedies under either 43 CFR parts 4 or 1610.5-2.

Year 2010

Inventory Unit Number/Name: Diablo West/Unnumbered Units

FORM 1

DOCUMENTATION OF BLM WILDERNESS INVENTORY FINDINGS ON RECORD

1. Is there existing BLM wilderness inventory information on all or part of this area?

No X (go to Form 2) Yes _____ (if more than one unit is within the area, list the names/numbers of those units.)

a) Inventory Source:

b) Inventory Unit Name(s)/Number(s): _____

c) Map Name(s)/Number(s):

d) BLM District(s)/Field Office(s): Lakeview District/Lakeview Resource Area

2. BLM Inventory Findings on Record

Existing inventory information regarding wilderness characteristics (if more than one BLM inventory unit is associated with the area, list each unit/acreage and answer each question individually for each inventory unit):

Unit#/Name	Size (historic acres)	Natural Condition? Y/N	Outstanding Solitude? Y/N	Outstanding Primitive & Unconfined Recreation? Y/N	Supplemental Values? Y/N
BLM					
Other					

Summarize any known primary reasons for prior inventory findings listed in this table):

FORM 2

DOCUMENTATION OF CURRENT WILDERNESS INVENTORY CONDITIONS

a. **Unit Number/Name:** Diablo West/Unnumbered Units

(1) **Is the unit of sufficient size?** Yes _____ No X

There are a total of 12 units within the Diablo West Area. One of the units meets an exception to the minimum size criteria and has been evaluated separately. The ten remaining units are well under the minimum size criteria. The average size of these units is 388.5 acres. They range from 12 acres to 979 acres and do not meet any exception to the size requirement. The majority of the Diablo West Area contains islands and peninsulas of BLM lands which are surrounded by private land.

Boundary Determination: In 2008, 2009, and 2010 the BLM conducted field inventory of the area to update its road and wilderness inventories. This field work included photo documentation of the boundary routes. Using BLM photos, field logs, and staff field knowledge, a BLM inter-disciplinary (ID) team completed an analysis of the motorized routes within the area in November of 2010.

On the south, the units are bounded by County Road 4-17 and a section of 6134-A0 (Diablo Road). On the north, the units are bounded by a combination of private land and a section of BLM (Diablo West) Unnumbered Route 1. On the east and west, the units are bounded primarily by private land (see Map 2, road analysis forms, photos, photo logs, and BLM ID team minutes in the wilderness inventory file for additional supporting information regarding these boundary determinations). None of these units meet the minimum size criteria or any of the exceptions to the size criteria.

Following the unit boundary determination, a BLM ID team conducted an inter-disciplinary evaluation of the current wilderness characteristics within the unit boundary. The results are contained in the following section. Additional background on the process that the BLM ID team followed during this evaluation is contained in the ID team meeting notes and the document, *Wilderness Inventory Maintenance Process for the Lakeview Resource Area, BLM*. Both documents are contained in the wilderness inventory file.

DESCRIPTION OF CURRENT CONDITIONS:

The eleven unnumbered inventory units are comprised of approximately 4,273 acres of BLM administered land and are located about 22 miles east-southeast of Silver Lake, Oregon. The units lie in the northern part of the Summer Lake Basin. The terrain is mostly flat with areas of low-rolling sand dunes, which are populated by short and tall sagebrush that varies in density from sparse to thick. Major human activities in the area include hunting, ranching, and OHV recreation.

(2) Is the unit in a natural condition? Yes ___ No ___ N/A X ___

The previous inventory did not include information on the natural character of these units, presumably because the units did not meet the minimum size criteria. The current natural condition of these units was not evaluated because the units failed to meet the minimum size requirement.

(3) Does the unit (or the remainder of the unit if a portion has been excluded due to unnaturalness and the remainder is of sufficient size) **have outstanding opportunities for solitude?** Yes ___ No ___ N/A X ___

The previous inventory did not include information on opportunities for solitude within these units, presumably because the units did not meet the minimum size criteria. The current opportunities for solitude within these units were not evaluated because the units failed to meet the minimum size requirement.

(4) Does the unit (or the remainder of the unit if a portion has been excluded due to unnaturalness and the remainder is of sufficient size) **have outstanding opportunities for primitive and unconfined recreation?**

Yes ___ No ___ N/A X ___

The previous inventory did not include information on recreation opportunities within these units, presumably because the units did not meet the minimum size criteria. The current opportunities for recreation within these units were not evaluated because the units failed to meet the minimum size requirement.

(5) Does the unit have supplemental values? Yes ___ No ___ N/A X ___

The previous inventory did not include information on supplemental values within these units, presumably because the units did not meet the minimum size criteria. Supplemental value was not evaluated within these units because the units failed to meet the minimum size requirement.

Summary of Findings and Conclusion

Unit Name and Number: Diablo West/Unnumbered Units

Summary Results of Analysis:

1. Does the area meet the size requirements? ___ Yes X No
2. Does the area appear to be natural? ___ Yes ___ No X N/A
3. Does the area offer outstanding opportunities for solitude or a primitive and unconfined type of recreation? ___ Yes ___ No X N/A
4. Does the area have supplemental values? ___ Yes ___ No X N/A

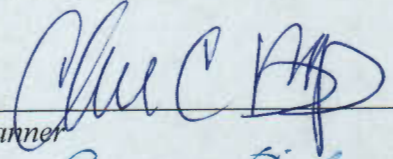
Conclusion (Check One):

 The area- or a portion of the area- has wilderness character:
(items 1, 2 and 3 must be checked "yes").

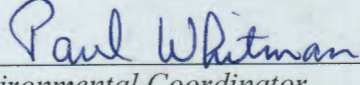
 X **The area does not have wilderness character:** *(any of items 1, 2 and 3 are checked "no").*

Diablo West
Unnumbered Units

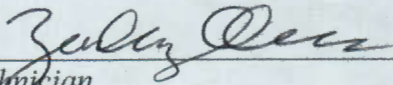
ID Team Members:

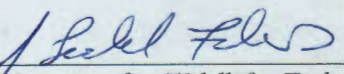
Chris Bishop  Date: 12/20/10
Recreation Planner

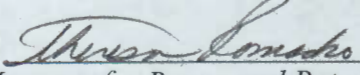
Casey O'Connor  Date: 12/20/10
Range Management Specialist

Paul Whitman  Date: 12/20/2010
Planning and Environmental Coordinator

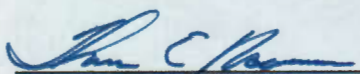
Edward Hennagin  Date: 12-15-2010
Cartographic Technician

Zach Adams  Date: 12/15/2010
Cartographic Technician

Todd Forbes  Date: 12-20-10
Associate Field Manager for Wildlife, Fisheries, Riparian, Hydrology, Wilderness, Recreation,
and Cultural

Theresa Romasko  Date: 12/20/2010
Associate Field Manager for Range and Botany

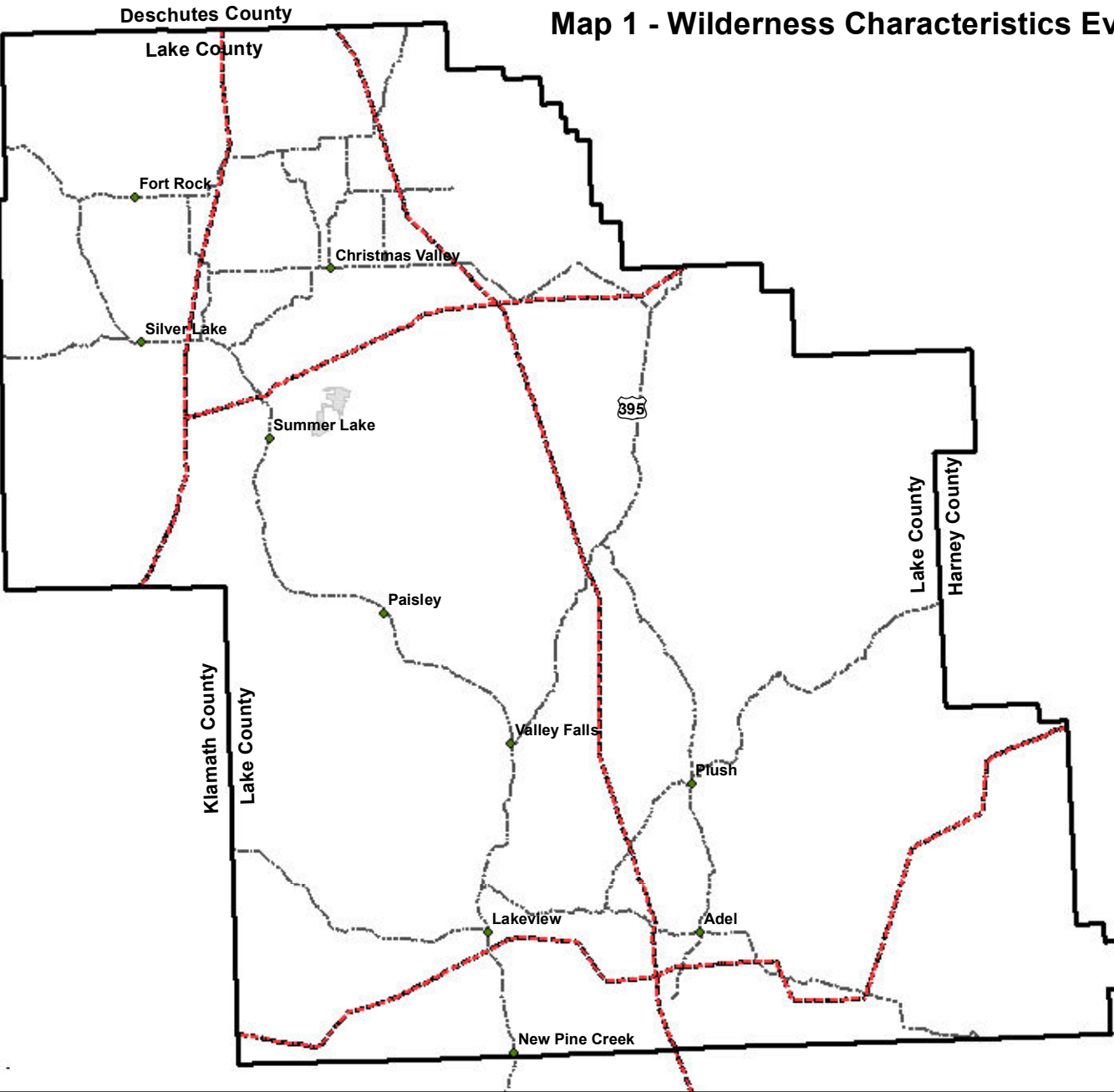
Approved by:


Tom Rasmussen, Field Manager

12/29/10
Date

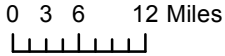
This form documents information that constitutes an inventory finding on wilderness characteristics. It does not represent a formal land use allocation or a final agency decision subject to administrative remedies under either 43 CFR parts 4 or 1610.5-2.

Map 1 - Wilderness Characteristics Evaluation Area

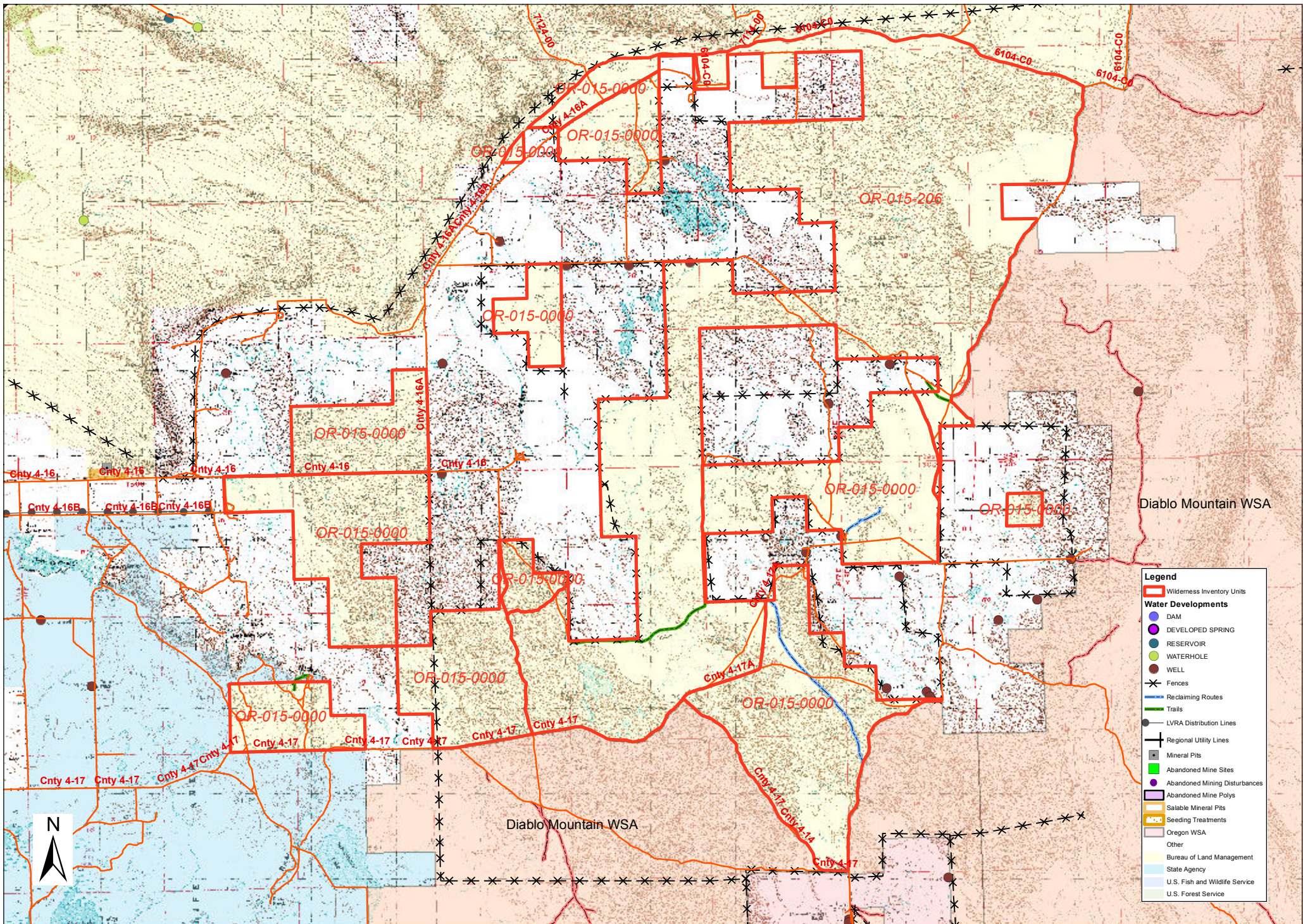


Legend

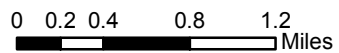
- Wilderness Characteristics - Poly
- Cities
- Major Utility Corridors
- Major Roads
- Resource Area Boundary

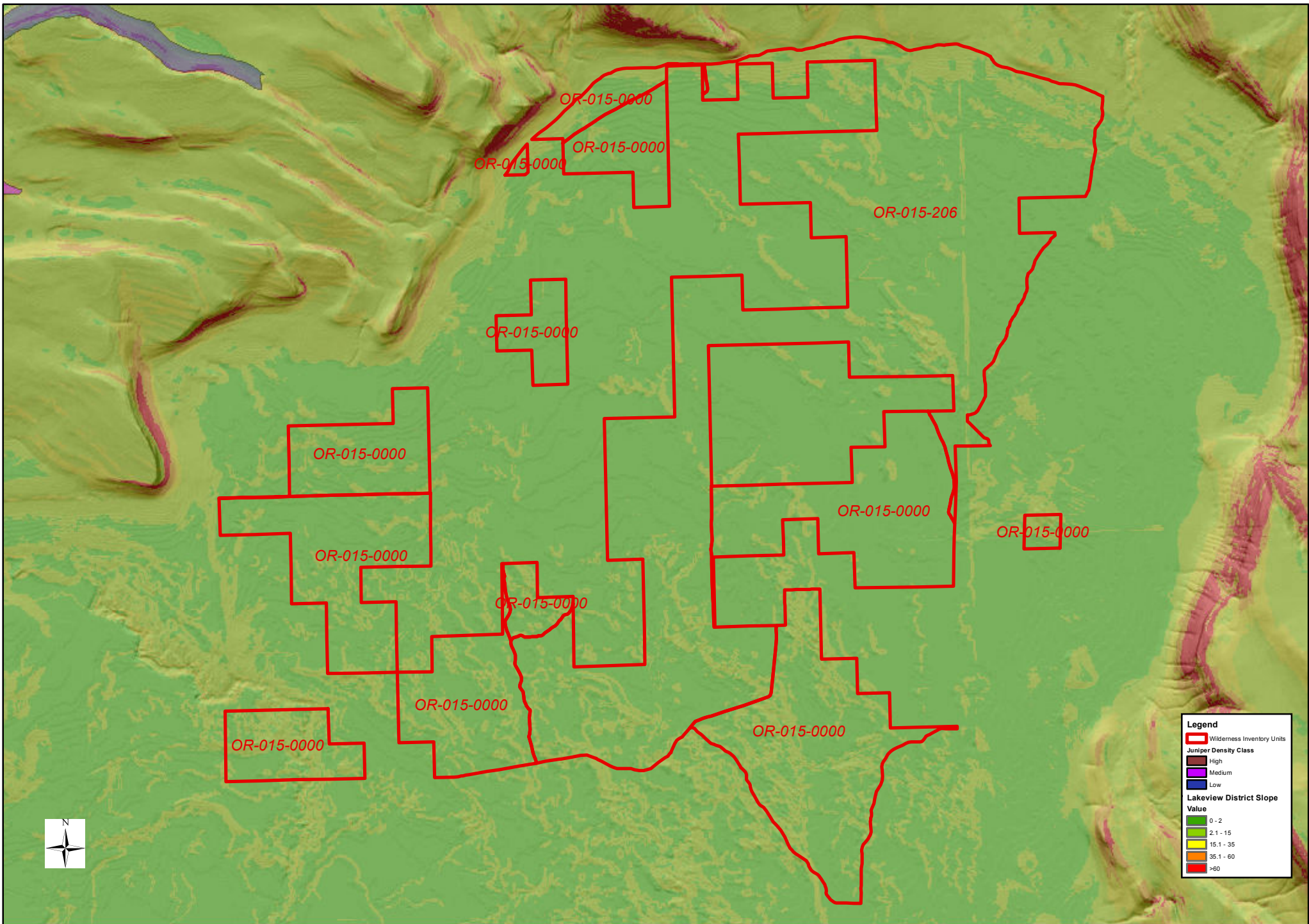


No warranty is made by the Bureau of Land Management as to the accuracy, reliability, or completeness of these data for individual or aggregate use with other data. Original data were compiled from various sources. This information may not meet National Map Accuracy Standards. This product was developed through digital means and may be updated without notification.



Map 2 - Wilderness Character in Diablo West Area





Map 3- Screening in the Diablo West Area

0 0.25 0.5 1 Miles