

Klamath Falls Resource Area Planning Update Fall 2009

BLM
Klamath Falls Resource Area



Public Lands - USA: Use, Share, Appreciate



As the Nation's principal conservation agency, the Department of the Interior has responsibility for most of our nationally owned public lands and natural resources. This includes fostering the wisest use of our land and water resources, protecting our fish and wildlife, preserving the environmental and cultural values of our national parks and historical places, and providing for the enjoyment of life through outdoor recreation. The Department assesses our energy and mineral resources and works to assure that their development is in the best interest of all our people. The Department also has a major responsibility for American Indian reservation communities and for people who live in Island Territories under U.S. administration.

BLM/OR/WA/PL-09/072+1792

Cover Photograph: Mortar and pestle (photograph by Brooke Brown)



United States Department of the Interior



BUREAU OF LAND MANAGEMENT
Klamath Falls Resource Area
2795 Anderson Avenue, Building 25
Klamath Falls, Oregon 97603-7891
Phone: (541) 883-6916 | Fax: (541) 884-2097
E-Mail Address: Username@or.blm.gov

IN REPLY REFER TO:
1614(014)

KLAMATH FALLS RESOURCE AREA PLANNING UPDATE Fall 2009

Planning Update General Information – This Planning Update provides information about activities proposed on the Bureau of Land Management (BLM) Klamath Falls Resource Area (KFRA). The table included provides the location and brief description of most activities proposed within the Resource Area. (Refer to the map following the table.) Additional information can be obtained from the contact person listed in the project descriptions or the Resource Area Planner. As certain projects reach stages for public involvement, news releases and public notices may be published in the local Klamath Falls newspaper, *The Herald and News*.

Klamath Falls Resource Area Resource Management Plan Update – Since June 1995 the Klamath Falls Resource Area has been managing most lands under the direction of the Klamath Falls Resource Area Resource Management Plan (RMP). In addition, acquired lands at the Wood River Wetland have been managed under the Klamath Falls Resource Area Upper Klamath Basin and Wood River Wetland Record of Decision and Resource Management Plan (Wood River RMP) since February 1996. In FY 2004, the BLM began to revise the six existing Resource Management Plans in western Oregon. The Klamath Falls Resource Area RMP was included in this revision process. As part of that process, the decisions and management direction for the Wood River Wetland were to be incorporated into this new (revised) RMP.

In December 2008 the BLM issued six Records of Decision (RODs) for the Resource Management Plans (RMPs) that were developed under the Western Oregon Plan Revisions. The RODs formally adopted the Proposed Resource Management Plan (PRMP) that was put forward in the Final Environmental Impact Statement (EIS), which was released in October 2008. On July 16, 2009 the U.S. Department of the Interior, withdrew the Records of Decision (2008 RODs) for the Western Oregon Plan Revisions and directed the BLM to implement actions in conformance with the resource management plans for western Oregon that were in place prior to December 30, 2008.

This Planning Update will continue to identify projects being considered for implementation of the 1995 and 1996 resource management plans currently in effect for the Klamath Falls Resource Area. Project planning and preparation of National Environmental Policy Act documentation for most of these projects listed in this Update, began prior to the effective date of the 2008 ROD. All projects are now designed to comply with the land use allocations, management direction, and objectives of the 1995 and 1996 RMPs.

If you have any questions on this update or recommendations for improvement, please notify us in person or call (541) 883-6916. The information contained in this Planning Update is also available on our website at: <http://www.blm.gov/or/districts/lakeview/plans/>. In order to reduce printing costs, please contact us if you wish to be removed from the mailing list.

Sincerely,

/s/ *Donald J. Holmstrom*
Manager, Klamath Falls Resource Area

SCHEDULE OF PROPOSED PROJECTS

BUREAU OF LAND MANAGEMENT * KLAMATH FALLS RESOURCE AREA * 2795 ANDERSON AVENUE, BLDG. #25 * KLAMATH FALLS, OR 97603
PHONE NUMBER: (541) 883-6916

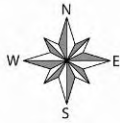
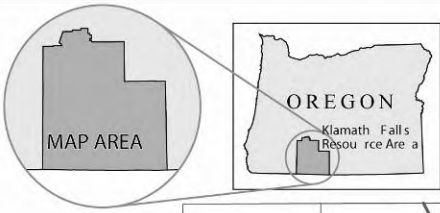
PROJECT TITLE & DESCRIPTION	LOCATION	MAP REF. #	STATUS OF ANALYSIS	ANALYSIS COMPLETION	PROJECT IMPLEMENTATION	CONTACT
CX = Categorical Exclusion, DNA = Determination of NEPA Adequacy, EA = Environmental Assessment, EIS = Environmental Impact Statement, DR = Decision Record						
Timber Management – New Projects						
Cold Onion Forest Health Treatments EA – for the Cold Creek and Onion Springs timber sales in Jenny Creek Watershed	T38S., R.5E., Sec. 33, 34 T.39S., R.6E., Sec. 2,11-13	#26	EA completed. Public comment ended 4/3/09	Fall 2009	Proposed sale dates Cold Creek – in progress Onion Springs – on hold	Shane Durant
Adobe West Timber Sale DR to the South Gerber Forest Health Treatments EA (#OR-014-04-06)	T41S, R14½E, Sections 16, 21, 22	#10	DR in progress	Fall 2009	FY 2010	Shane Durant
Timber Management – Recent Decisions						
Brady's Boot Timber Sale DR to the South Gerber Forest Health Treatments EA (#OR-014-04-06)	T41S, R14½E, Sections 13-15, 23, 24	#10	DR complete	8/18/09	Sold on 9/16/09	Shane Durant
Gerber Stew Stewardship Contract – New Projects						
2009 Juniper Disposal EA - This EA analyzes the utilization of previously cut juniper on units totaling approximately 3,000 acres.	Various locations	None	EA in progress	FY 2010	FY 2010	Madeline Campbell
Management Facilities – New Projects						
Yainax Road Maintenance Brushing	T.37S., R.13E., Sec. 26	#13	CX in progress	FY 2010	FY 2010	Don Hoffheins
South Gerber Well and Reservoir Reconfiguration EA	T. 41 S., R. 14½ E., Section 14, SE¼SW¼	#10	EA completed. Public comment ended 9/19/09.	8/18/09	Fall 2009	Brian McCarty
Management Facilities – Recent Decisions						
Gerber Core Sample Drilling – to find suitable new quarry site in support of road maintenance stimulus projects	T40S, R14½E, Sec.13 E½NE¼, NE¼SE¼	#14	CX completed.	7/9/09	Fall 2009	Brian McCarty
South Gerber Well and Reservoir Reconfiguration DR	T. 41 S., R. 14½ E., Section 14, SE¼SW¼	#10	DR completed. Appeal period ends 10/25/09	9/21/09	Fall 2009	Brian McCarty
Range Management – New Projects						
North Horsefly Allotment Fence	North Horsefly Allotment	#27	EA in progress	FY 2010	FY 2010	Dana Eckard
Prescribed Burning and Fuels Treatment – New Projects						
Bly Mountain Fuels Reduction and Range Improvement	Bly Mountain	#27	EA in progress	FY 2010	FY 2009	Matt Broyles
Recreation – New Projects						
Swan Lake Rim Trail Construction	Swan Lake Rim	#7	EA in progress	FY 2009	FY 2010	Grant Weidenbach
Lands/Realty – New Projects						
New Cingular Cellular Tower Site	T. 39S., R11 E., Section 19	#3	EA in progress	Fall 2009	FY 2010	Don Hoffheins

SCHEDULE OF PROPOSED PROJECTS						
BUREAU OF LAND MANAGEMENT * KLAMATH FALLS RESOURCE AREA * 2795 ANDERSON AVENUE, BLDG. #25 * KLAMATH FALLS, OR 97603 PHONE NUMBER: (541) 883-6916						
PROJECT TITLE & DESCRIPTION	LOCATION	MAP REF. #	STATUS OF ANALYSIS	ANALYSIS COMPLETION	PROJECT IMPLEMENTATION	CONTACT
Lands/Realty – Recent Decisions						
PacifiCorp Powerline ROW Renewal	Across the southern end of the Resource Area	None	CX completed.	9/16/09	FY 2009	Don Hoffheins
Hydrology/Fisheries – New Projects						
Wood River Canal Water Control Structure – Oregon spotted frog habitat enhancement	Wood River Wetland	#8	CX in progress	FY 2010	FY 2010	Rob Roninger
Hydrology/Fisheries – Recent Decisions						
Pitchlog Stream Crossing Improvement DR – Installation of 3 flood culverts to reclaim original floodplain and repair incised channel	T39S,R14E, Sec. 25	#6	DR completed. Appeal period ended 9/19/09	8/17/09	Fall 2009	Andy Hamilton
Placement of Large Wood in Spencer Creek – Decision Record #2 to EA #OR-014-04-08 for helicopter portion of proposed action	Spencer Creek	#9	DR completed. Appeal period ended 8/10/09	7/9/09	Fall 2009	Rob Roninger
Interdisciplinary – Landscape Level Analysis						
Wildgal-Dixie Landscape Analysis – Analysis of several proposed treatments (roads, vegetation, prescribed burning, etc.).	Southwest corner of the Resource Area	#11	Initial scoping in progress.	FY 2010	2010-2015	Shane Durant
Spencer Creek Landscape Analysis – Analysis of several proposed treatments (roads, vegetation, prescribed burning, etc.).	Spencer Creek 5 th Field Watershed	#9	Initial scoping complete. EA in progress	FY 2009	2010-2015	Eric Johnson
Off-highway Vehicle (OHV) Route Designation	Resource Area Wide	None	Inventory completed. EA in progress	FY 2012	FY 2012	Scott Senter

SCHEDULE OF PROPOSED PROJECTS						
BUREAU OF LAND MANAGEMENT * KLAMATH FALLS RESOURCE AREA * 2795 ANDERSON AVENUE, BLDG. #25 * KLAMATH FALLS, OR 97603 PHONE NUMBER: (541) 883-6916						
PROJECT TITLE & DESCRIPTION	LOCATION	MAP REF. #	SPECIAL AREAS AFFECTED	STATUS OF ANALYSIS	COMPLETION DATE	CONTACT
Rangeland Health Standards Assessments – in progress						
These assessments compare the monitoring information collected against the five Standards for Rangeland Health and propose management changes if current grazing use is not meeting the Standards, or not making significant improvement towards meeting them. Changes are implemented through the grazing decision or agreement process.						
Ketcham Allotment (#0835)	East of Klamath Falls	#5	None Known	Assessment in progress	FY 2010	Dana Eckard
Windy Ridge Allotment (#0838)	East of Klamath Falls	#5	None Known	Assessment in progress	FY 2010	Dana Eckard
Barnwell Allotment (#0807)	East of Klamath Falls	#2	None Known	Assessment in progress	FY 2010	Dana Eckard
Horton Allotment (#0829)	East of Klamath Falls	#4	None Known	Assessment in progress	FY 2010	Dana Eckard
Marshall Allotment (#0841)	East of Klamath Falls	#1	None Known	Assessment in progress	FY 2010	Dana Eckard
Bryant-Lyon Allotment (#0840)	East of Malin	#36	None Known	Assessment in progress	FY 2011	Dana Eckard
Rajnus Bros. Allotment (#0849)	Southeast of Klamath Falls	#29	None Known	Assessment in progress	FY 2011	Dana Eckard
Wilkinson Allotment (#0850)	East of Klamath Falls	#3	None Known	Assessment in progress	FY 2012	Dana Eckard
Rangeland Health Standards Assessments – completed in FY 2009						
Swede Cabin Allotment (#0847)	Northeast of Bly	#12	None Known	Assessment completed	FY 2009	Dana Eckard
7C Allotment (#853)	Northeast of Bly	#12	None Known	Assessment completed	FY 2009	Dana Eckard
Haught Allotment (#0801)	Buck Butte	#43	None Known	Assessment completed	FY 2009	Dana Eckard
Mills Creek Allotment (#0865)	East of Malin	#36	None Known	Assessment completed	FY 2009	Dana Eckard

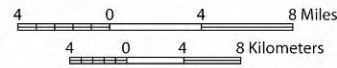
ENVIRONMENTAL EDUCATION AND OUTREACH				
BUREAU OF LAND MANAGEMENT * KLAMATH FALLS RESOURCE AREA * 2795 ANDERSON AVENUE, BLDG. #25 * KLAMATH FALLS, OR 97603 PHONE NUMBER: (541) 883-6916				
Yearly Scheduled Events - 2009				
Event/Activity	Date	Location	Contact(s)	# of Participants (Employees/Public*)
Wilderness & Horse Packing Clinic	May 1-3	Klamath County Fairgrounds	Scott Senter	7/5,000
International Migratory Bird Day	May 9	Veteran's Memorial Park	Steve Hayner	6/600
RAP Camp	June 15-19	Camp Esther Applegate	Scott Senter	8/80
Klamath County Fair	August 6-9	Klamath County Fairgrounds	Scott Senter	9/5000
Sixth Grade Forestry Tour	September 22-24	Clover Creek Educational Area	Sarah Diehr	6/1000
National Public Lands Day	September 26	Topsy Campground	Scott Senter	11/26

*Numbers of public participants for large events are estimates.



LEGEND

- Project Location
- U.S. Highway
- State Highway
- BLM Administered Land



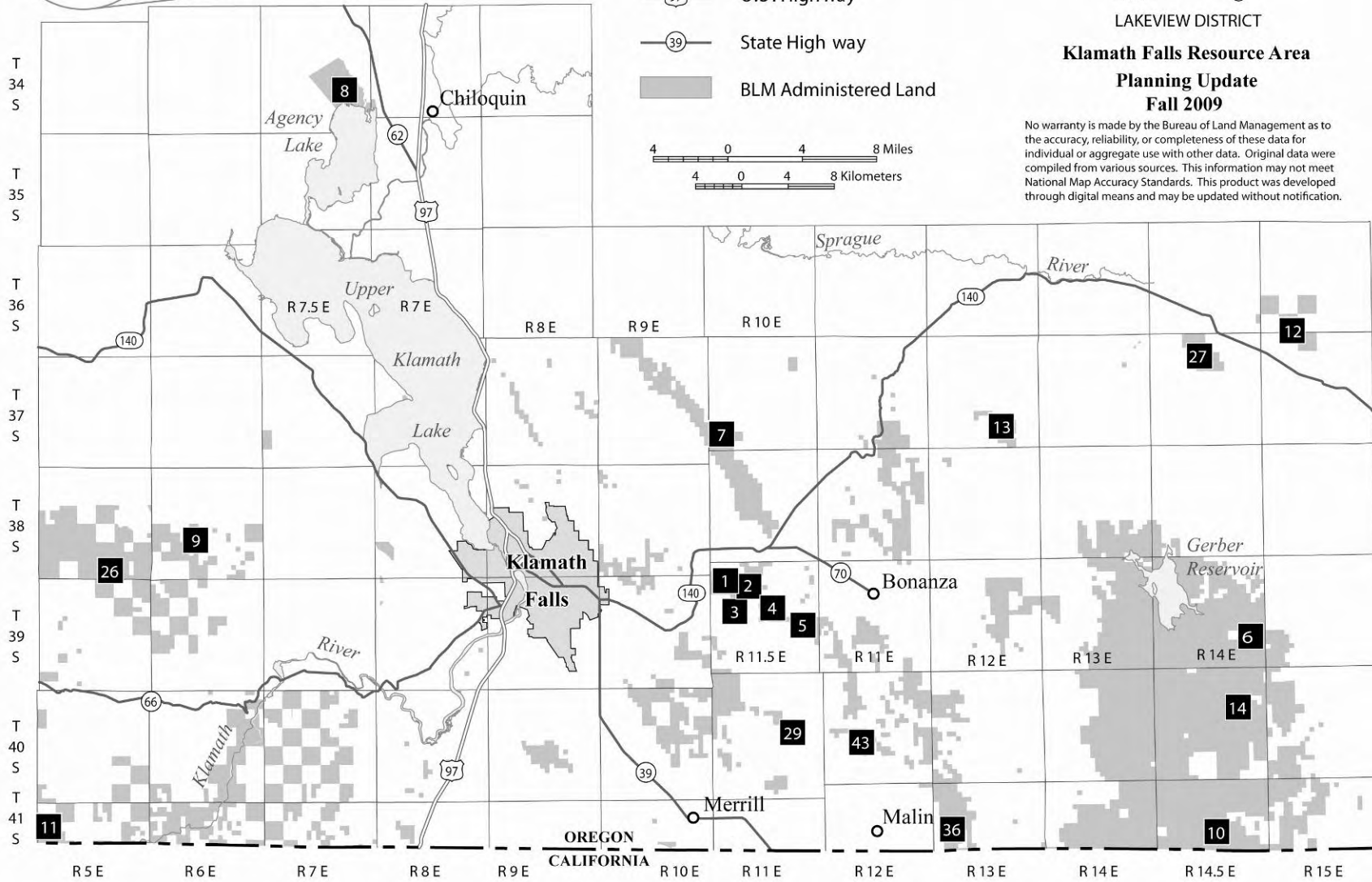
U.S. DEPARTMENT OF THE INTERIOR
Bureau of Land Management



LAKEVIEW DISTRICT

**Klamath Falls Resource Area
Planning Update
Fall 2009**

No warranty is made by the Bureau of Land Management as to the accuracy, reliability, or completeness of these data for individual or aggregate use with other data. Original data were compiled from various sources. This information may not meet National Map Accuracy Standards. This product was developed through digital means and may be updated without notification.



**UNITED STATES
DEPARTMENT OF THE INTERIOR
BUREAU OF LAND MANAGEMENT**

Klamath Falls Resource Area
2795 Anderson avenue, Building 25
Klamath Falls, Oregon 97603-7891

OFFICIAL BUSINESS
PENALTY FOR PRIVATE USE

FIRST CLASS MAIL
POSTAGE & FEES PAID
Bureau of Land Management
Permit No. G-76